

Data Path : Z:\pestpcbsrv\HPCHEM1\FID_E\Data\FE060324AL\
 Data File : FE048523.D
 Signal(s) : FID1B.ch
 Acq On : 03 Jun 2024 22:12
 Operator : YP\AJ
 Sample : P2687-02
 Misc :
 ALS Vial : 17 Sample Multiplier: 1

Instrument :
 FID_E
 ClientSampleId :
 VNJ-223-E2

Integration File: autoint1.e
 Quant Time: Jun 04 01:33:00 2024
 Quant Method : Z:\pestpcbsrv\HPCHEM1\FID_E\methods\Aliphatic EPH 052524.M
 Quant Title : GC Extractables
 QLast Update : Fri May 24 16:28:51 2024
 Response via : Initial Calibration
 Integrator: ChemStation

Volume Inj. : 1 ul
 Signal Phase : Rxi-1ms
 Signal Info : 20M x 0.18mm x 0.18um

Compound	R.T.	Response	Conc Units

System Monitoring Compounds			
9) S ortho-Terphenyl (SURR)	11.950	7339187	51.110 ug/ml
Spiked Amount	50.000	Recovery	= 102.22%
12) S 1-chlorooctadecane (S...	13.384	6235751	57.239 ug/ml
Spiked Amount	50.000	Recovery	= 114.48%

Target Compounds

(f)=RT Delta > 1/2 Window

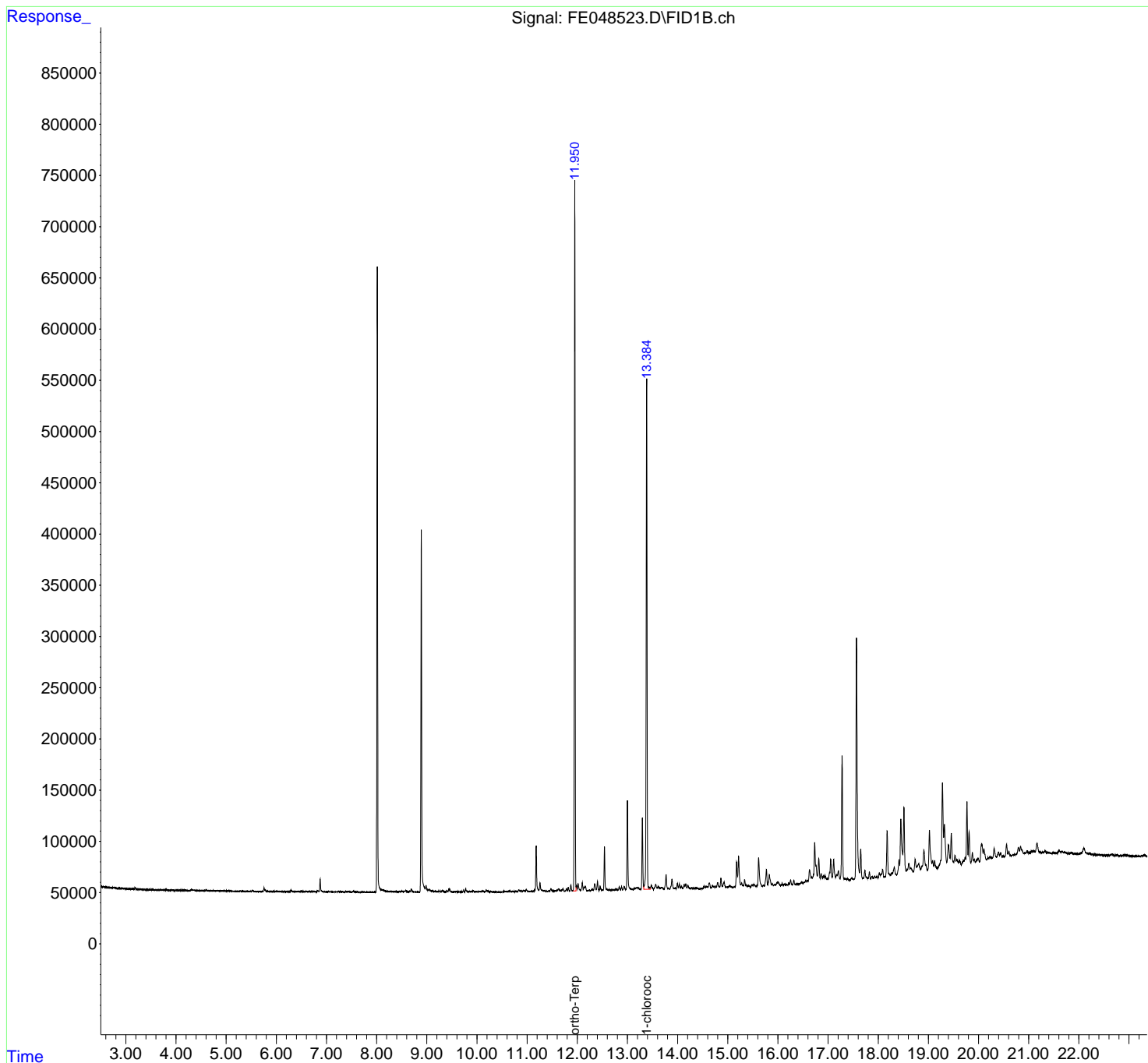
(m)=manual int.

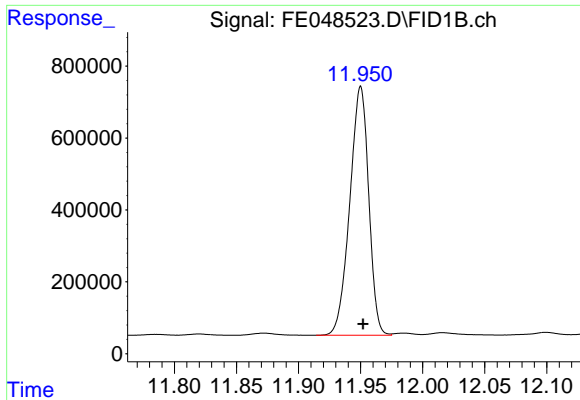
Data Path : Z:\pestpcbsrv\HPCHEM1\FID_E\Data\FE060324AL\
 Data File : FE048523.D
 Signal(s) : FID1B.ch
 Acq On : 03 Jun 2024 22:12
 Operator : YP\AJ
 Sample : P2687-02
 Misc :
 ALS Vial : 17 Sample Multiplier: 1

Instrument :
 FID_E
 ClientSampleId :
 VNJ-223-E2

Integration File: autoint1.e
 Quant Time: Jun 04 01:33:00 2024
 Quant Method : Z:\pestpcbsrv\HPCHEM1\FID_E\methods\Aliphatic EPH 052524.M
 Quant Title : GC Extractables
 QLast Update : Fri May 24 16:28:51 2024
 Response via : Initial Calibration
 Integrator: ChemStation

Volume Inj. : 1 ul
 Signal Phase : Rxi-1ms
 Signal Info : 20M x 0.18mm x 0.18um

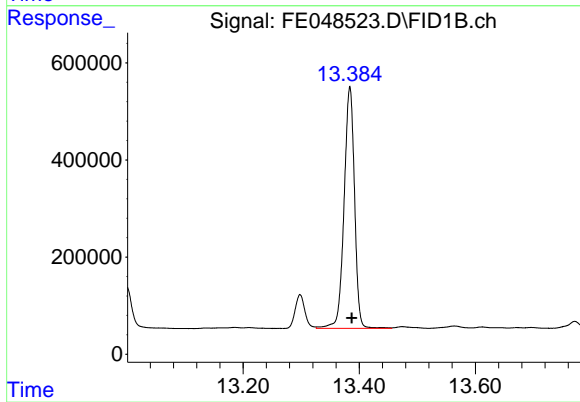




#9 ortho-Terphenyl (SURR)

R.T.: 11.950 min
Delta R.T.: -0.002 min
Response: 7339187
Conc: 51.11 ug/ml

Instrument :
FID_E
ClientSampleId :
VNJ-223-E2



#12 1-chlorooctadecane (SURR)

R.T.: 13.384 min
Delta R.T.: -0.003 min
Response: 6235751
Conc: 57.24 ug/ml