

Data Path : Z:\pestpcbsrv\HPCHEM1\FID_E\Data\FE060424AL\
 Data File : FE048534.D
 Signal(s) : FID1B.ch
 Acq On : 04 Jun 2024 13:04
 Operator : YP\AJ
 Sample : I.BLK
 Misc :
 ALS Vial : 1 Sample Multiplier: 1

Instrument :
 FID_E
ClientSampleId :
 I.BLK

Integration File: autoint1.e
 Quant Time: Jun 05 01:50:55 2024
 Quant Method : Z:\pestpcbsrv\HPCHEM1\FID_E\methods\Aliphatic EPH 052524.M
 Quant Title : GC Extractables
 QLast Update : Fri May 24 16:28:51 2024
 Response via : Initial Calibration
 Integrator: ChemStation

Volume Inj. : 1 ul
 Signal Phase : Rxi-1ms
 Signal Info : 20M x 0.18mm x 0.18um

Compound	R.T.	Response	Conc Units

System Monitoring Compounds			
Target Compounds			

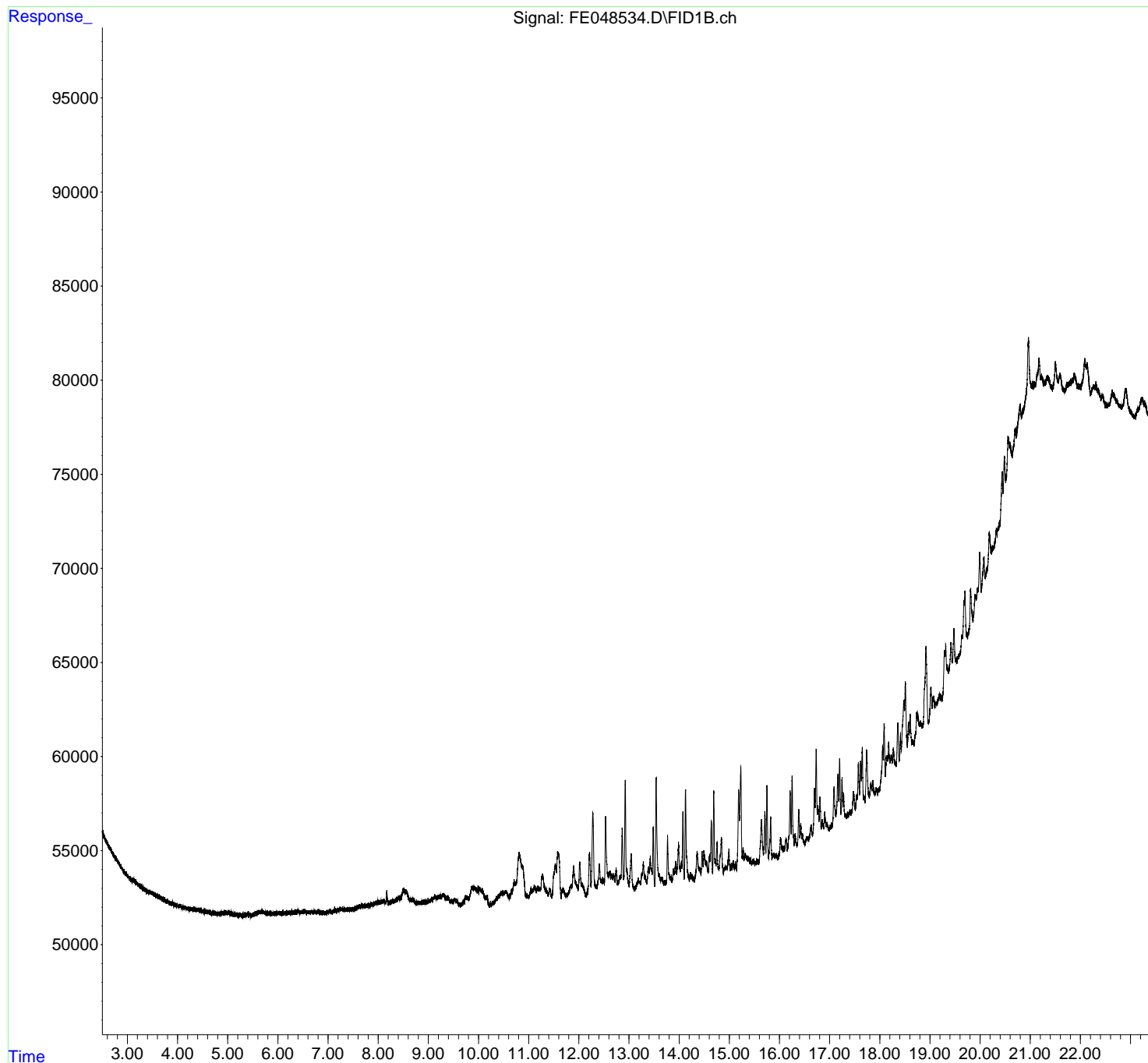
(f)=RT Delta > 1/2 Window (m)=manual int.

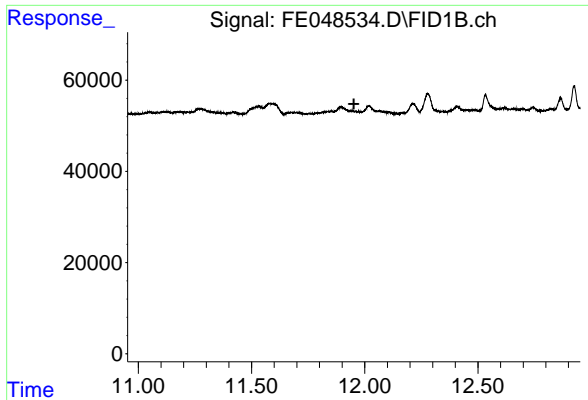
Data Path : Z:\pestpcbsrv\HPCHEM1\FID_E\Data\FE060424AL\
Data File : FE048534.D
Signal(s) : FID1B.ch
Acq On : 04 Jun 2024 13:04
Operator : YP\AJ
Sample : I.BLK
Misc :
ALS Vial : 1 Sample Multiplier: 1

Instrument :
FID_E
ClientSampleId :
I.BLK

Integration File: autoint1.e
Quant Time: Jun 05 01:50:55 2024
Quant Method : Z:\pestpcbsrv\HPCHEM1\FID_E\methods\Aliphatic EPH 052524.M
Quant Title : GC Extractables
QLast Update : Fri May 24 16:28:51 2024
Response via : Initial Calibration
Integrator: ChemStation

Volume Inj. : 1 ul
Signal Phase : Rxi-1ms
Signal Info : 20M x 0.18mm x 0.18um

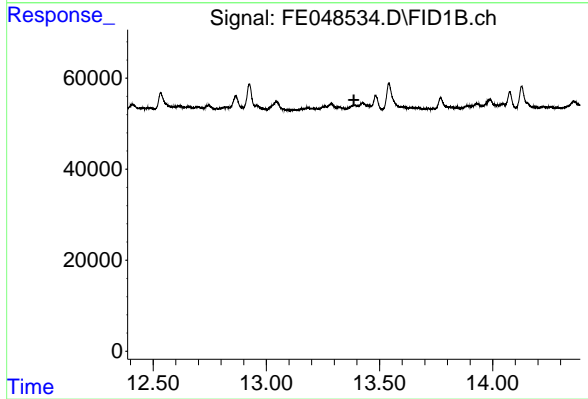




#9 ortho-Terphenyl (SURR)

R.T.: 0.000 min
Exp R.T. : 11.952 min
Response: 0
Conc: N.D.

Instrument :
FID_E
ClientSampleId :
I.BLK



#12 1-chlorooctadecane (SURR)

R.T.: 0.000 min
Exp R.T. : 13.387 min
Response: 0
Conc: N.D.