

Data Path : Z:\pestpcbsrv\HPCHEM1\FID_E\Data\FE060425AL\
 Data File : FE054174.D
 Signal(s) : FID1B.ch
 Acq On : 04 Jun 2025 17:23
 Operator : YP\AJ
 Sample : Q2185-07
 Misc :
 ALS Vial : 9 Sample Multiplier: 1

Instrument :
 FID_E
 ClientSampleId :
 TP01-MHA-EPH

Integration File: autoint1.e
 Quant Time: Jun 05 06:27:02 2025
 Quant Method : Z:\pestpcbsrv\HPCHEM1\FID_E\methods\Aliphatic EPH 051425.M
 Quant Title : GC Extractables
 QLast Update : Wed May 14 12:15:41 2025
 Response via : Initial Calibration
 Integrator: ChemStation

Volume Inj. : 1 ul
 Signal Phase : Rxi-1ms
 Signal Info : 20M x 0.18mm x 0.18um

Compound	R.T.	Response	Conc Units

System Monitoring Compounds			
9) S ortho-Terphenyl (SURR)	11.840	6919204	42.577 ug/ml
Spiked Amount	50.000	Recovery	= 85.15%
12) S 1-chlorooctadecane (S...	13.285	5647136	47.635 ug/ml
Spiked Amount	50.000	Recovery	= 95.27%
Target Compounds			
10) T n-Eicosane (C20)	12.905f	59598	0.453 ug/ml
15) T n-Hexacosane (C26)	16.168	29156	0.238 ug/ml
16) T n-Octacosane (C28)	17.118	26601	0.219 ug/ml
17) T n-Tricontane (C30)	18.007	33314	0.267 ug/ml
18) T n-Dotriacontane (C32)	18.838	49828	0.398 ug/ml

(f)=RT Delta > 1/2 Window

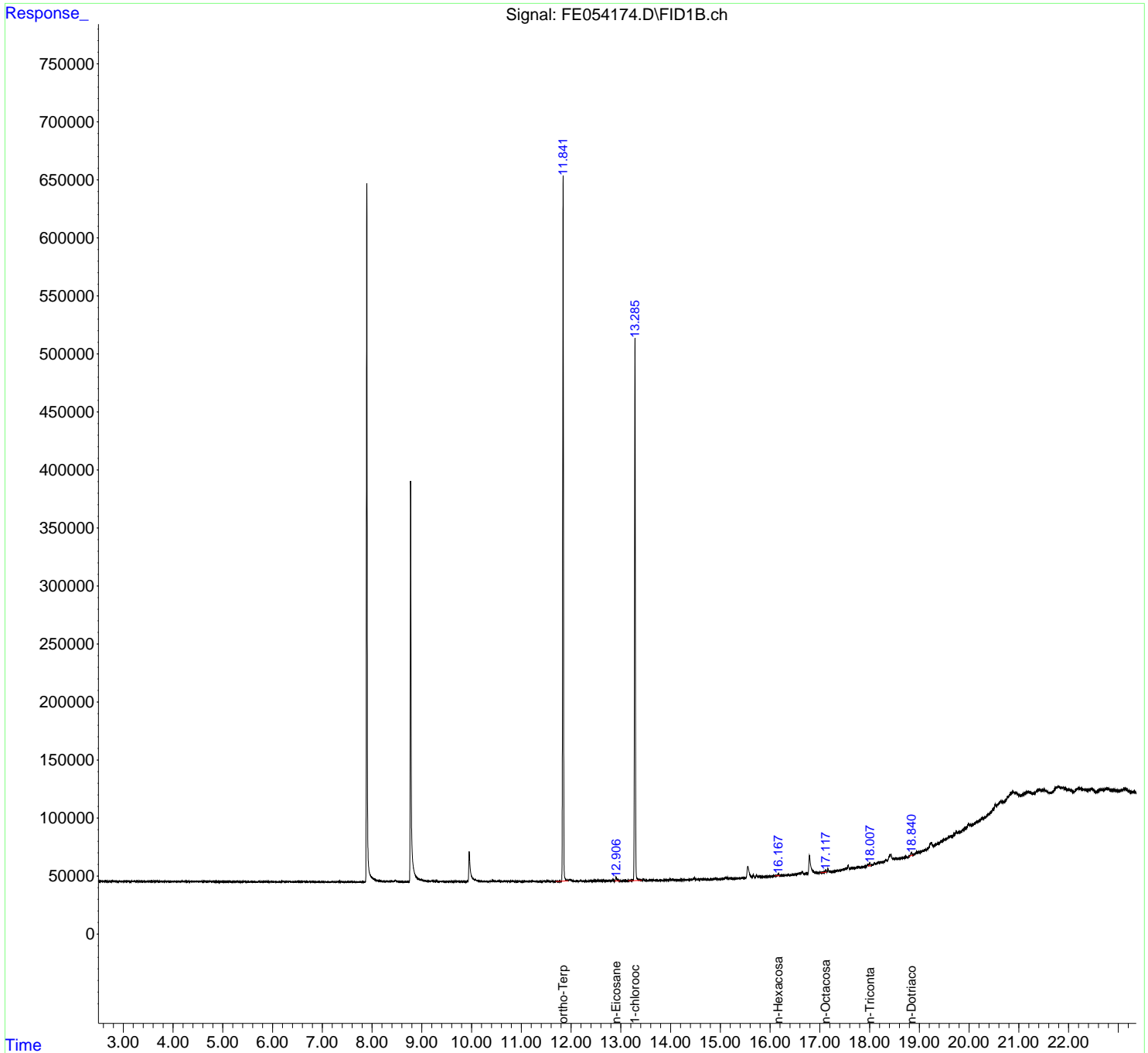
(m)=manual int.

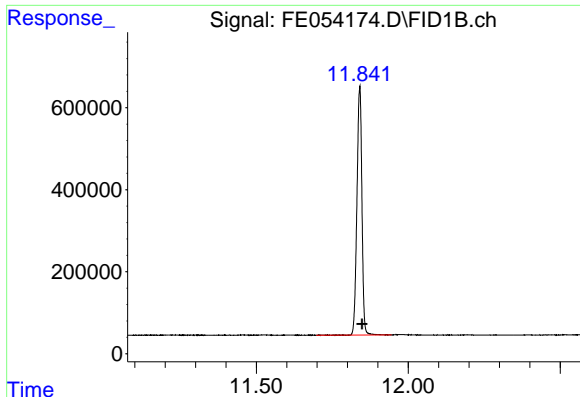
Data Path : Z:\pestpcbsrv\HPCHEM1\FID_E\Data\FE060425AL\
Data File : FE054174.D
Signal(s) : FID1B.ch
Acq On : 04 Jun 2025 17:23
Operator : YP\AJ
Sample : Q2185-07
Misc :
ALS Vial : 9 Sample Multiplier: 1

Instrument :
FID_E
ClientSampleId :
TP01-MHA-EPH

Integration File: autoint1.e
Quant Time: Jun 05 06:27:02 2025
Quant Method : Z:\pestpcbsrv\HPCHEM1\FID_E\methods\Aliphatic EPH 051425.M
Quant Title : GC Extractables
QLast Update : Wed May 14 12:15:41 2025
Response via : Initial Calibration
Integrator: ChemStation

Volume Inj. : 1 ul
Signal Phase : Rxi-1ms
Signal Info : 20M x 0.18mm x 0.18um

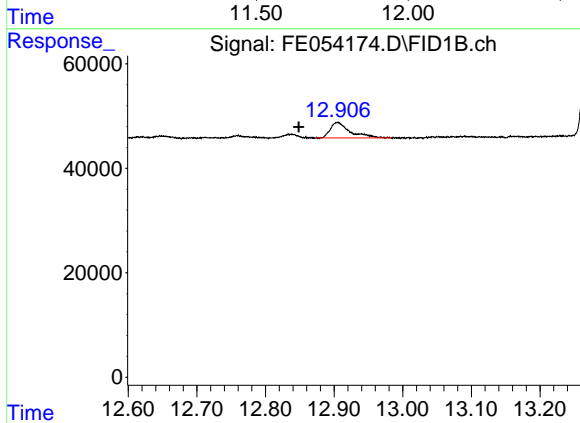




#9 ortho-Terphenyl (SURR)

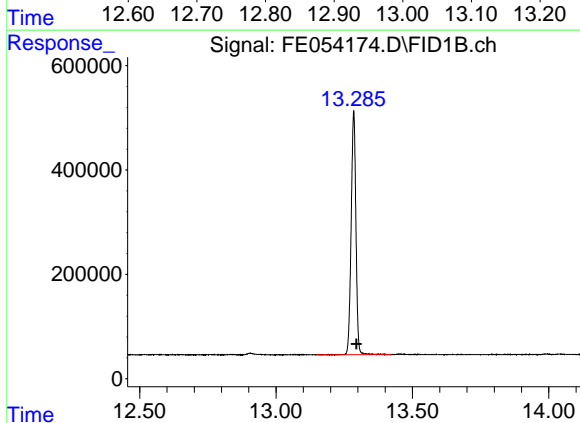
R.T.: 11.840 min
 Delta R.T.: -0.008 min
 Response: 6919204
 Conc: 42.58 ug/ml

Instrument :
 FID_E
 ClientSampleId :
 TP01-MHA-EPH



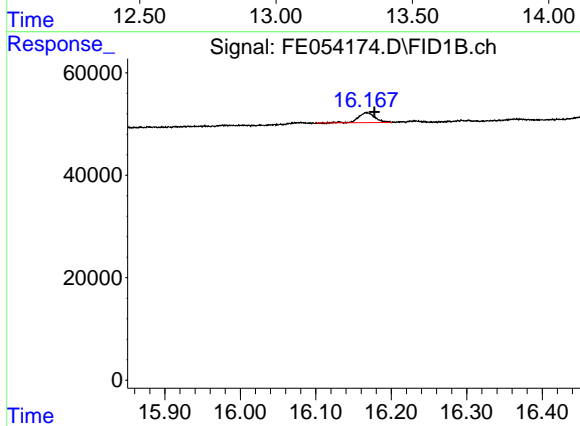
#10 n-Eicosane (C20)

R.T.: 12.905 min
 Delta R.T.: 0.056 min
 Response: 59598
 Conc: 0.45 ug/ml



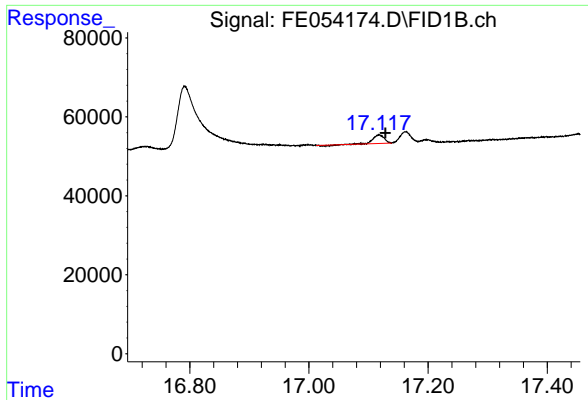
#12 1-chlorooctadecane (SURR)

R.T.: 13.285 min
 Delta R.T.: -0.010 min
 Response: 5647136
 Conc: 47.64 ug/ml



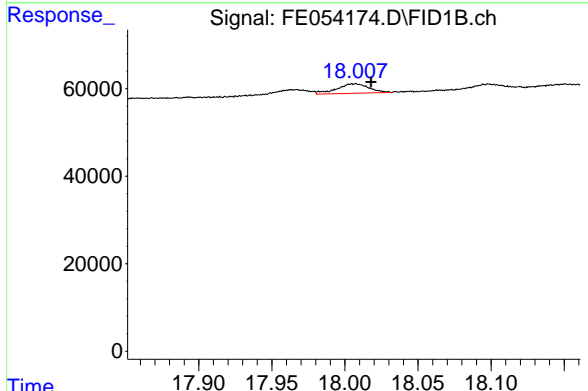
#15 n-Hexacosane (C26)

R.T.: 16.168 min
 Delta R.T.: -0.010 min
 Response: 29156
 Conc: 0.24 ug/ml

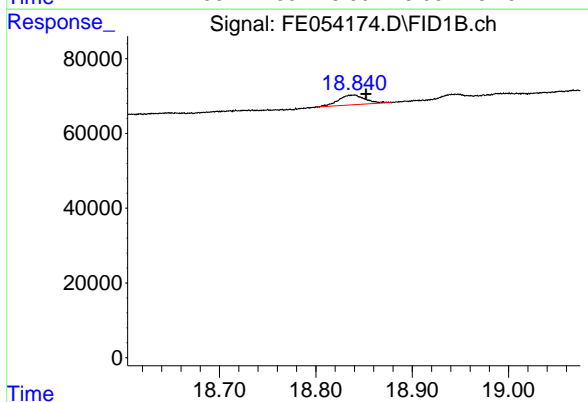


#16 n-Octacosane (C28)
 R.T.: 17.118 min
 Delta R.T.: -0.011 min
 Response: 26601
 Conc: 0.22 ug/ml

Instrument :
 FID_E
 ClientSampleId :
 TP01-MHA-EPH



#17 n-Tricontane (C30)
 R.T.: 18.007 min
 Delta R.T.: -0.011 min
 Response: 33314
 Conc: 0.27 ug/ml



#18 n-Dotriacontane (C32)
 R.T.: 18.838 min
 Delta R.T.: -0.014 min
 Response: 49828
 Conc: 0.40 ug/ml