

Data Path : Z:\pestpcbsrv\HPCHEM1\FID_E\Data\FE060624AL\
 Data File : FE048593.D
 Signal(s) : FID1B.ch
 Acq On : 06 Jun 2024 15:46
 Operator : YP\AJ
 Sample : P2740-05D
 Misc :
 ALS Vial : 13 Sample Multiplier: 1

Instrument :
 FID_E
 ClientSampleId :

Integration File: autoint1.e
 Quant Time: Jun 07 01:26:25 2024
 Quant Method : Z:\pestpcbsrv\HPCHEM1\FID_E\methods\Aliphatic EPH 052524.M
 Quant Title : GC Extractables
 QLast Update : Fri May 24 16:28:51 2024
 Response via : Initial Calibration
 Integrator: ChemStation

Volume Inj. : 1 ul
 Signal Phase : Rxi-1ms
 Signal Info : 20M x 0.18mm x 0.18um

Compound	R.T.	Response	Conc Units

System Monitoring Compounds			
9) S ortho-Terphenyl (SURR)	11.947	6311114	43.951 ug/ml
Spiked Amount	50.000	Recovery	= 87.90%
12) S 1-chlorooctadecane (S...	13.381	5139085	47.173 ug/ml
Spiked Amount	50.000	Recovery	= 94.35%
Target Compounds			
18) T n-Dotriacontane (C32)	18.919	95509	0.704 ug/ml

(f)=RT Delta > 1/2 Window

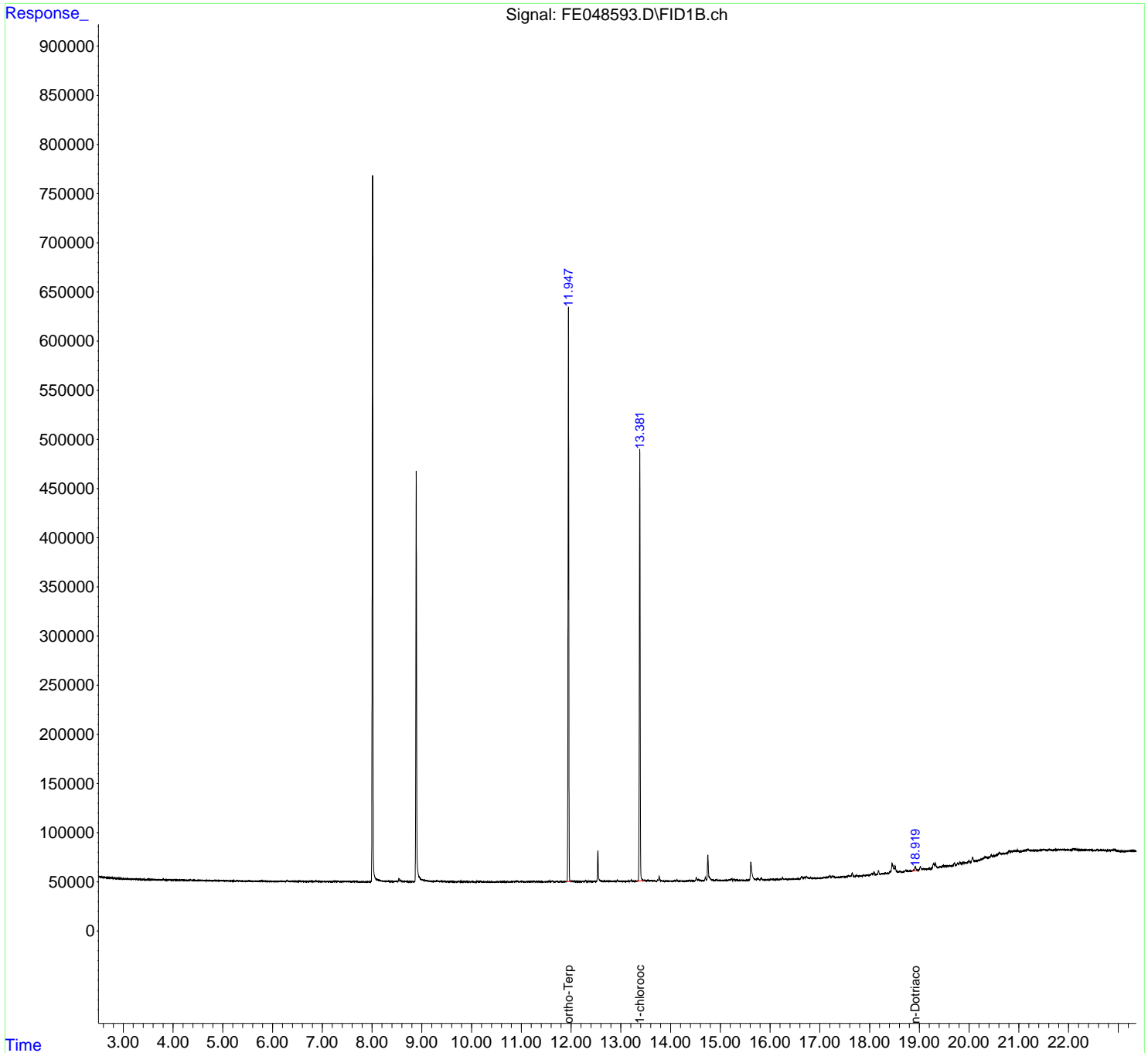
(m)=manual int.

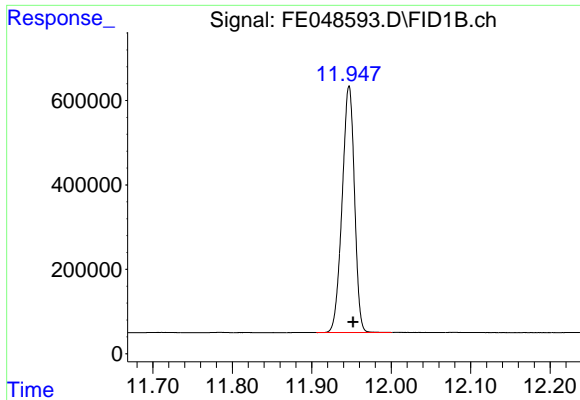
Data Path : Z:\pestpcbsrv\HPCHEM1\FID_E\Data\FE060624AL\
Data File : FE048593.D
Signal(s) : FID1B.ch
Acq On : 06 Jun 2024 15:46
Operator : YP\AJ
Sample : P2740-05D
Misc :
ALS Vial : 13 Sample Multiplier: 1

Instrument :
FID_E
ClientSampleId :

Integration File: autoint1.e
Quant Time: Jun 07 01:26:25 2024
Quant Method : Z:\pestpcbsrv\HPCHEM1\FID_E\methods\Aliphatic EPH 052524.M
Quant Title : GC Extractables
QLast Update : Fri May 24 16:28:51 2024
Response via : Initial Calibration
Integrator: ChemStation

Volume Inj. : 1 ul
Signal Phase : Rxi-1ms
Signal Info : 20M x 0.18mm x 0.18um

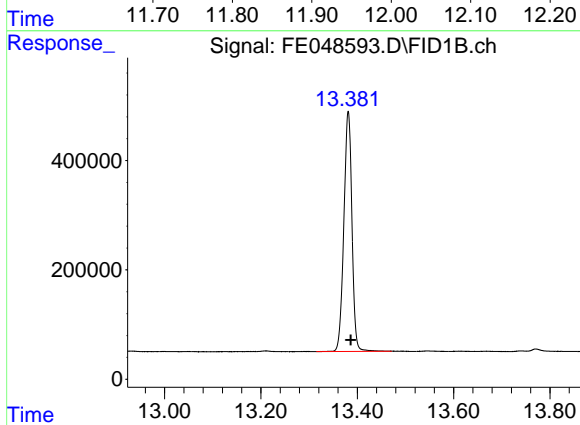




#9 ortho-Terphenyl (SURRE)

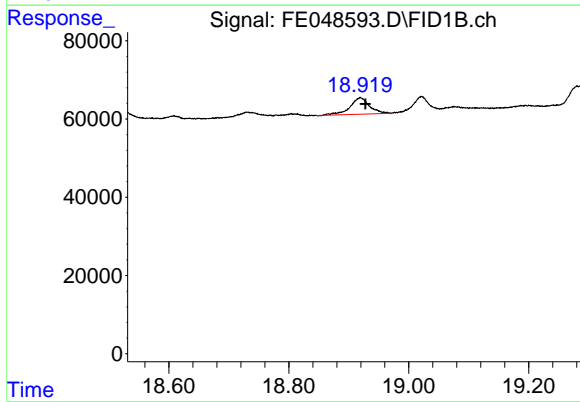
R.T.: 11.947 min
 Delta R.T.: -0.005 min
 Response: 6311114
 Conc: 43.95 ug/ml

Instrument :
 FID_E
 ClientSampleId :



#12 1-chlorooctadecane (SURRE)

R.T.: 13.381 min
 Delta R.T.: -0.006 min
 Response: 5139085
 Conc: 47.17 ug/ml



#18 n-Dotriacontane (C32)

R.T.: 18.919 min
 Delta R.T.: -0.008 min
 Response: 95509
 Conc: 0.70 ug/ml