

Data Path : Z:\pestpcbsrv\HPCHEM1\FID_E\Data\FE060925AL\
 Data File : FE054250.D
 Signal(s) : FID1B.ch
 Acq On : 09 Jun 2025 17:11
 Operator : YP\AJ
 Sample : Q2240-02
 Misc :
 ALS Vial : 11 Sample Multiplier: 1

Instrument :
 FID_E
 ClientSampleId :
 TP-3-EPH

Integration File: autoint1.e
 Quant Time: Jun 10 03:09:11 2025
 Quant Method : Z:\pestpcbsrv\HPCHEM1\FID_E\methods\Aliphatic EPH 051425.M
 Quant Title : GC Extractables
 QLast Update : Wed May 14 12:15:41 2025
 Response via : Initial Calibration
 Integrator: ChemStation

Volume Inj. : 1 ul
 Signal Phase : Rxi-1ms
 Signal Info : 20M x 0.18mm x 0.18um

Compound	R.T.	Response	Conc Units

System Monitoring Compounds			
9) S ortho-Terphenyl (SURR)	11.866	7368832	45.343 ug/ml
Spiked Amount	50.000	Recovery	= 90.69%
12) S 1-chlorooctadecane (S...	13.298	5243437	44.230 ug/ml
Spiked Amount	50.000	Recovery	= 88.46%
Target Compounds			
1) T n-Nonane (C9)	3.193	614849	4.549 ug/ml
2) T n-Decane (C10)	4.475	535944	3.966 ug/ml
3) T A~Naphthalene (C11.7)	6.162	1496208	10.411 ug/ml
4) T n-Dodecane (C12)	6.665	6944629	50.912 ug/ml
5) T A~2-methylnaphthalene...	7.280	19994370	144.147 ug/ml
6) T n-Tetradecane (C14)	8.471	16497720	122.252 ug/ml
7) T n-Hexadecane (C16)	10.110	27868426	206.533 ug/ml
8) T n-Octadecane (C18)	11.540	1415046	10.508 ug/ml
10) T n-Eicosane (C20)	12.849	3486445	26.527 ug/ml
11) T n-Heneicosane (C21)	13.506	3007685	23.200 ug/ml
13) T n-Docosane (C22)	14.040	176798	1.386 ug/ml
14) T n-Tetracosane (C24)	15.144	456337	3.647 ug/ml
15) T n-Hexacosane (C26)	16.175	92351	0.754 ug/ml
16) T n-Octacosane (C28)	17.159	166490	1.370 ug/ml
17) T n-Tricontane (C30)	18.013	157328	1.263 ug/ml
18) T n-Dotriacontane (C32)	18.847	112931	0.903 ug/ml
19) T n-Tetratriacontane (C34)	19.656	77856	0.654 ug/ml
21) T n-Octatriacontane (C38)	21.161f	858559	7.889 ug/ml

(f)=RT Delta > 1/2 Window

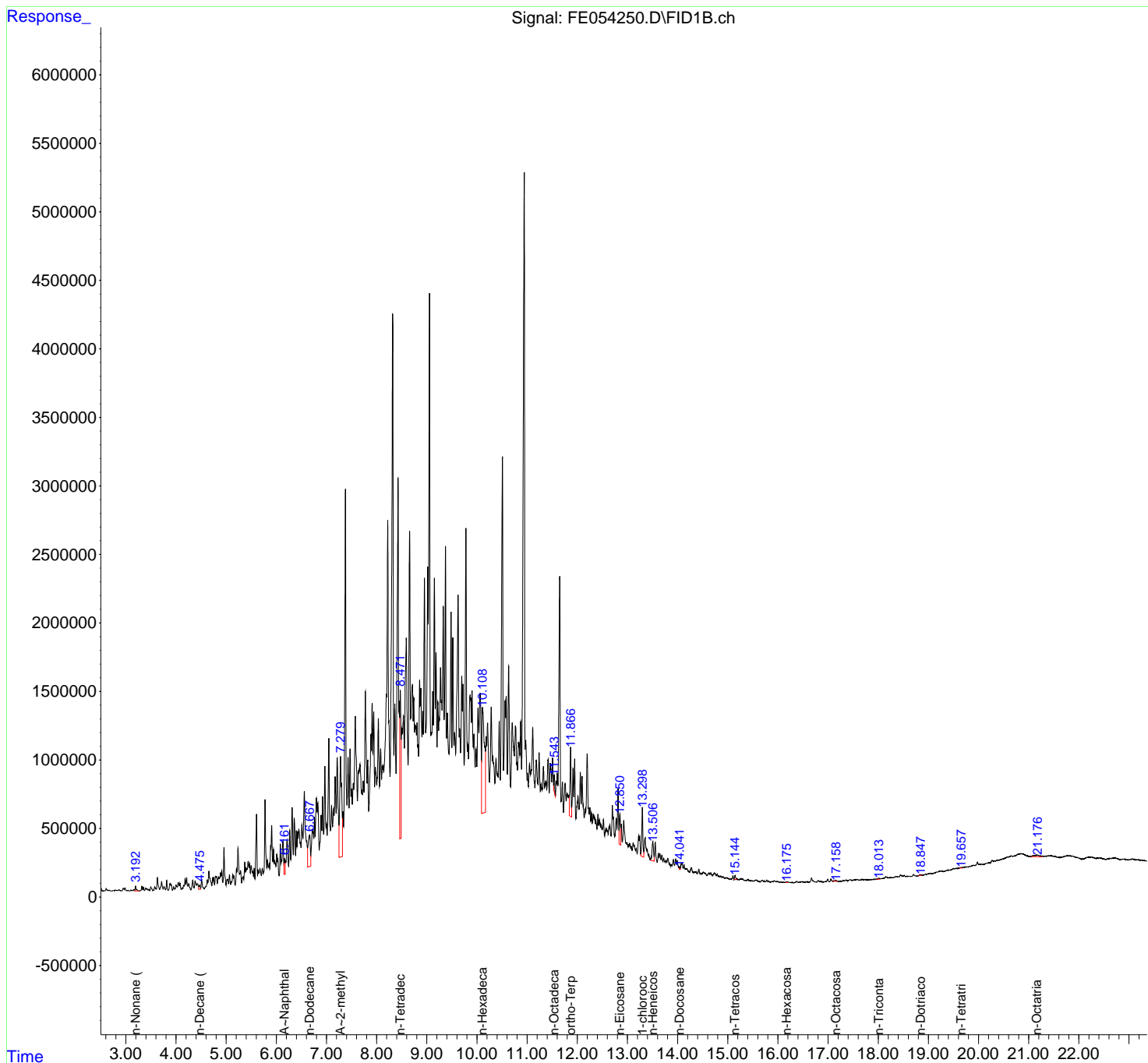
(m)=manual int.

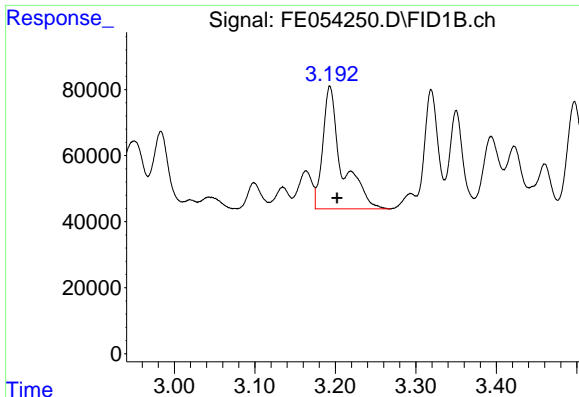
Data Path : Z:\pestpcbsrv\HPCHEM1\FID_E\Data\FE060925AL\
 Data File : FE054250.D
 Signal(s) : FID1B.ch
 Acq On : 09 Jun 2025 17:11
 Operator : YP\AJ
 Sample : Q2240-02
 Misc :
 ALS Vial : 11 Sample Multiplier: 1

Instrument :
 FID_E
 ClientSampleId :
 TP-3-EPH

Integration File: autoint1.e
 Quant Time: Jun 10 03:09:11 2025
 Quant Method : Z:\pestpcbsrv\HPCHEM1\FID_E\methods\Aliphatic EPH 051425.M
 Quant Title : GC Extractables
 QLast Update : Wed May 14 12:15:41 2025
 Response via : Initial Calibration
 Integrator: ChemStation

Volume Inj. : 1 ul
 Signal Phase : Rxi-1ms
 Signal Info : 20M x 0.18mm x 0.18um

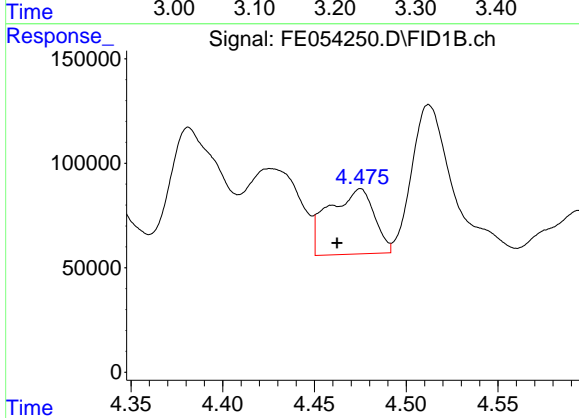




#1 n-Nonane (C9)

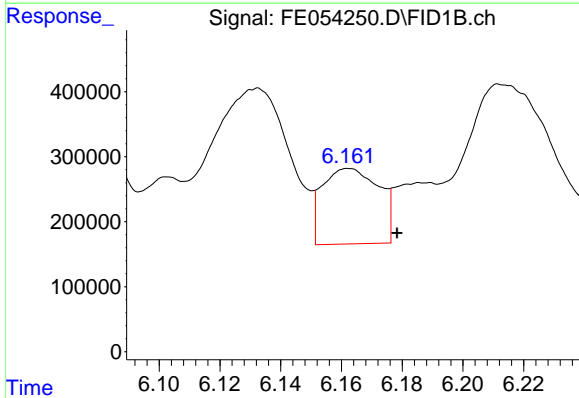
R.T.: 3.193 min
 Delta R.T.: -0.009 min
 Response: 614849
 Conc: 4.55 ug/ml

Instrument :
 FID_E
 ClientSampleId :
 TP-3-EPH



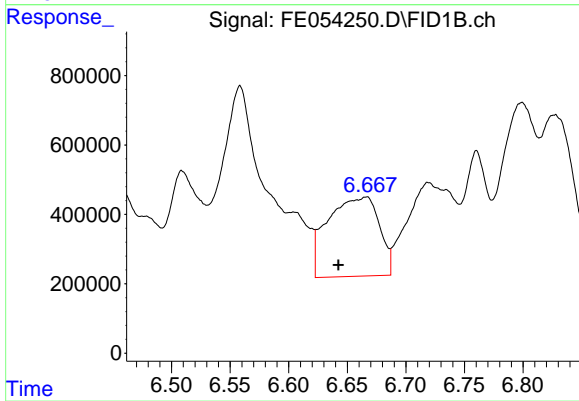
#2 n-Decane (C10)

R.T.: 4.475 min
 Delta R.T.: 0.012 min
 Response: 535944
 Conc: 3.97 ug/ml



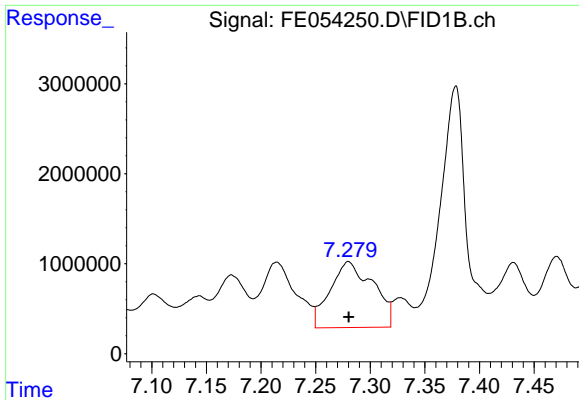
#3 A~Naphthalene (C11.7)

R.T.: 6.162 min
 Delta R.T.: -0.016 min
 Response: 1496208
 Conc: 10.41 ug/ml



#4 n-Dodecane (C12)

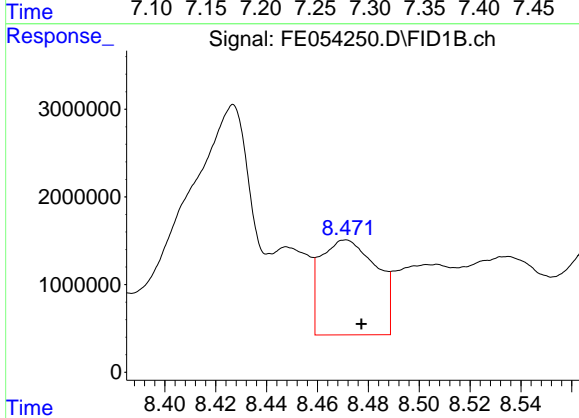
R.T.: 6.665 min
 Delta R.T.: 0.023 min
 Response: 6944629
 Conc: 50.91 ug/ml



#5 A~2-methylnaphthalene (C12.89)

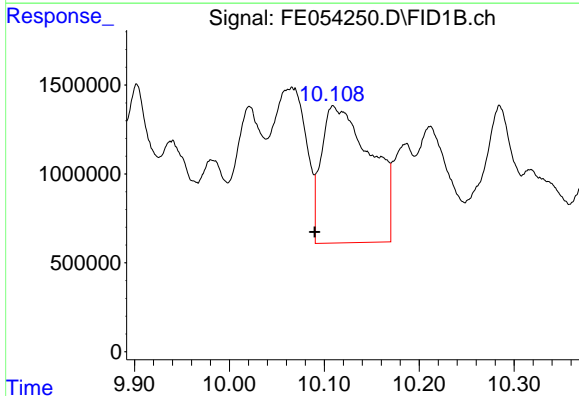
R.T.: 7.280 min
 Delta R.T.: 0.000 min
 Response: 19994370
 Conc: 144.15 ug/ml

Instrument :
 FID_E
 ClientSampleId :
 TP-3-EPH



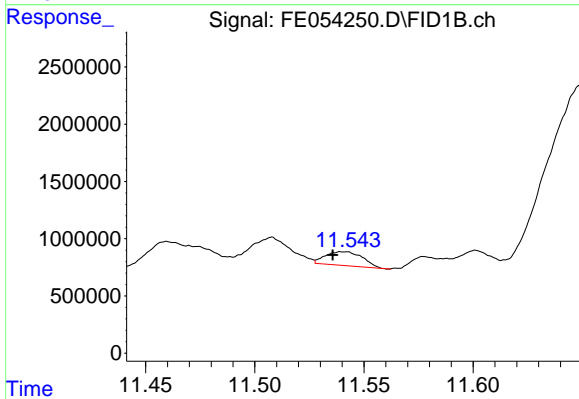
#6 n-Tetradecane (C14)

R.T.: 8.471 min
 Delta R.T.: -0.006 min
 Response: 16497720
 Conc: 122.25 ug/ml



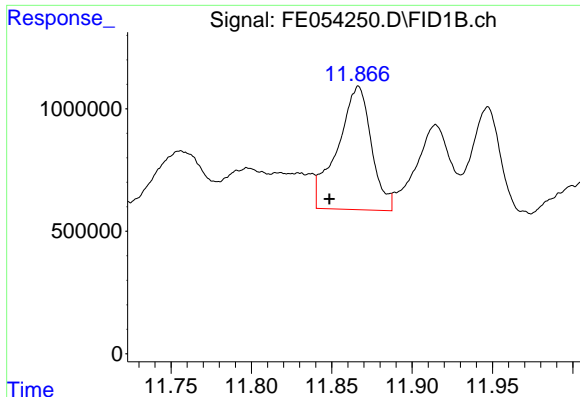
#7 n-Hexadecane (C16)

R.T.: 10.110 min
 Delta R.T.: 0.020 min
 Response: 27868426
 Conc: 206.53 ug/ml



#8 n-Octadecane (C18)

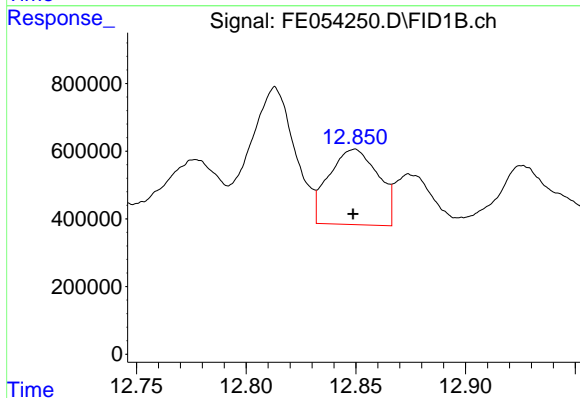
R.T.: 11.540 min
 Delta R.T.: 0.005 min
 Response: 1415046
 Conc: 10.51 ug/ml



#9 ortho-Terphenyl (SURR)

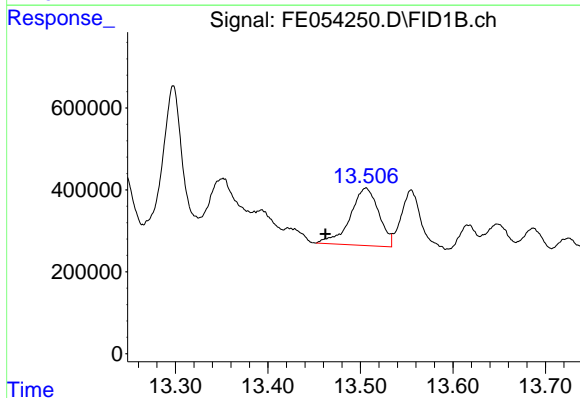
R.T.: 11.866 min
 Delta R.T.: 0.018 min
 Response: 7368832
 Conc: 45.34 ug/ml

Instrument :
 FID_E
 ClientSampleId :
 TP-3-EPH



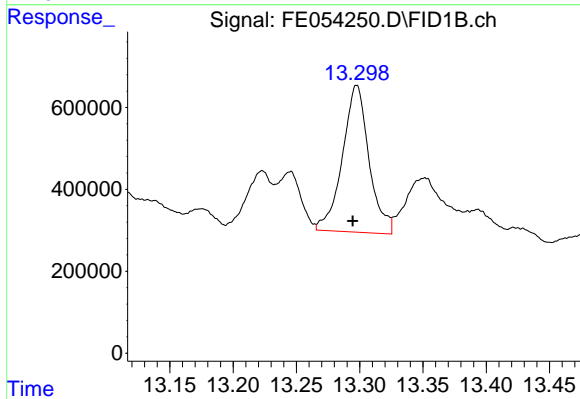
#10 n-Eicosane (C20)

R.T.: 12.849 min
 Delta R.T.: 0.000 min
 Response: 3486445
 Conc: 26.53 ug/ml



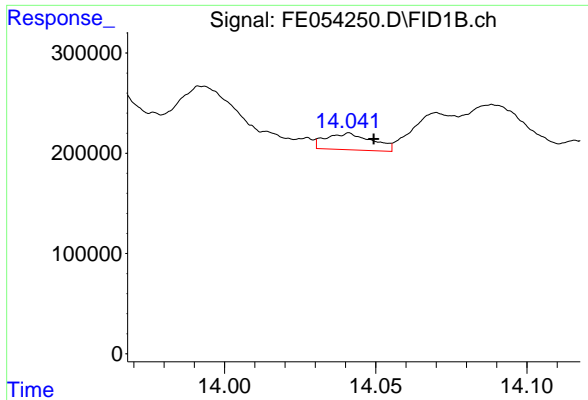
#11 n-Heneicosane (C21)

R.T.: 13.506 min
 Delta R.T.: 0.043 min
 Response: 3007685
 Conc: 23.20 ug/ml



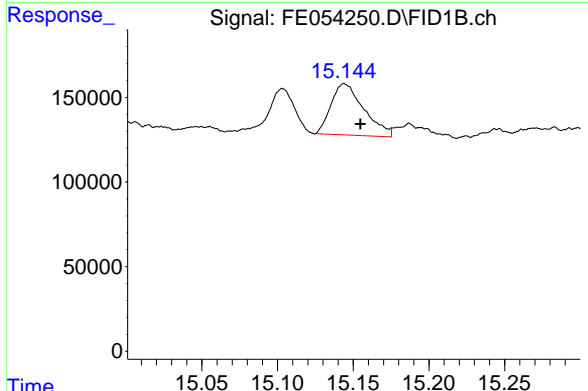
#12 1-chlorooctadecane (SURR)

R.T.: 13.298 min
 Delta R.T.: 0.003 min
 Response: 5243437
 Conc: 44.23 ug/ml

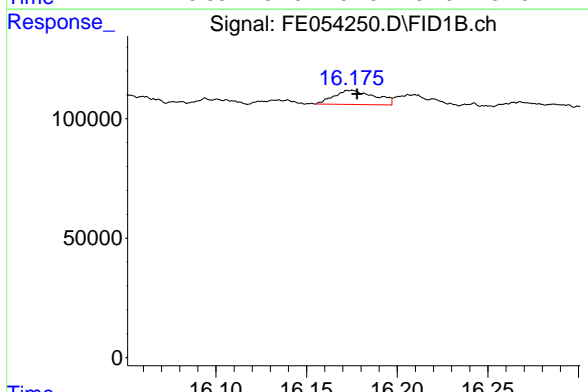


#13 n-Docosane (C22)
 R.T.: 14.040 min
 Delta R.T.: -0.009 min
 Response: 176798
 Conc: 1.39 ug/ml

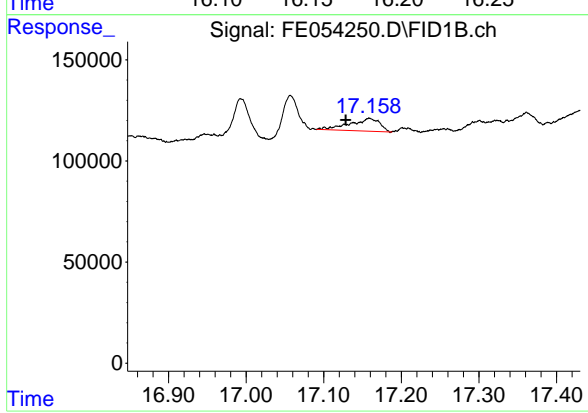
Instrument : FID_E
 ClientSampleId : TP-3-EPH



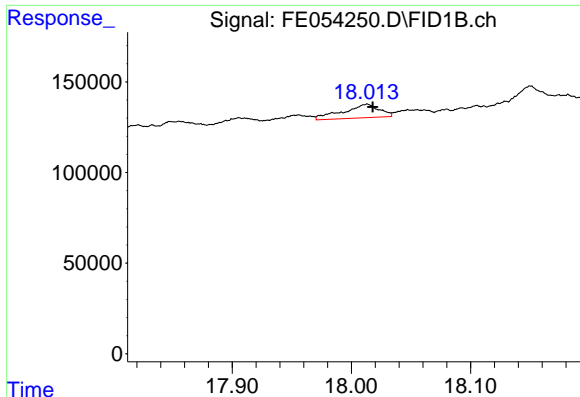
#14 n-Tetracosane (C24)
 R.T.: 15.144 min
 Delta R.T.: -0.010 min
 Response: 456337
 Conc: 3.65 ug/ml



#15 n-Hexacosane (C26)
 R.T.: 16.175 min
 Delta R.T.: -0.003 min
 Response: 92351
 Conc: 0.75 ug/ml



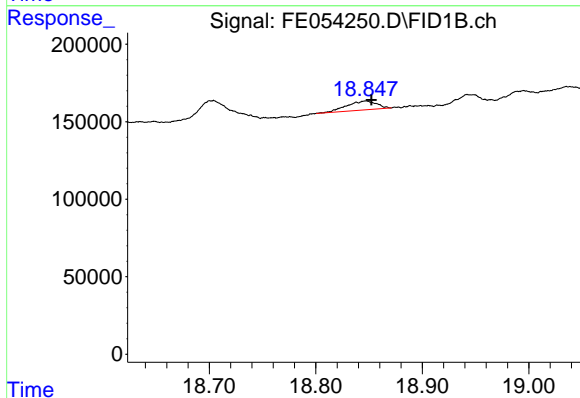
#16 n-Octacosane (C28)
 R.T.: 17.159 min
 Delta R.T.: 0.030 min
 Response: 166490
 Conc: 1.37 ug/ml



#17 n-Tricontane (C30)

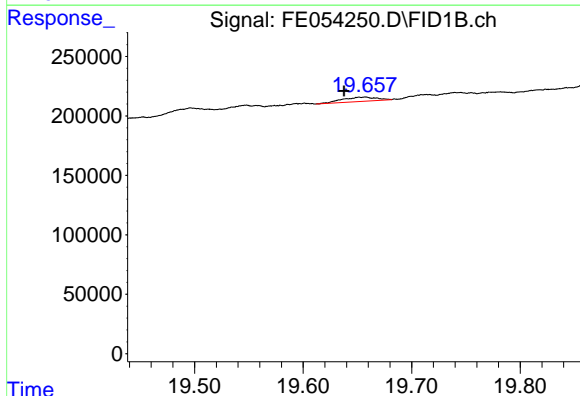
R.T.: 18.013 min
 Delta R.T.: -0.005 min
 Response: 157328
 Conc: 1.26 ug/ml

Instrument :
 FID_E
 ClientSampleId :
 TP-3-EPH



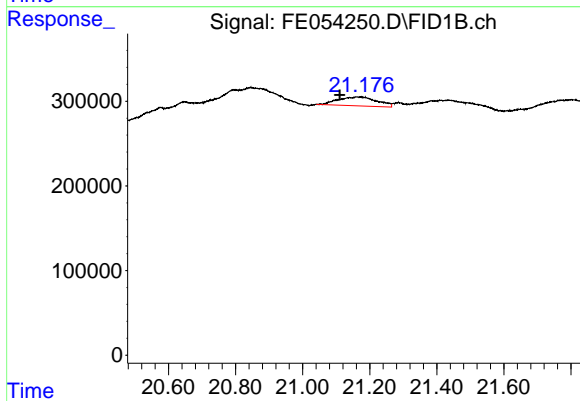
#18 n-Dotriacontane (C32)

R.T.: 18.847 min
 Delta R.T.: -0.005 min
 Response: 112931
 Conc: 0.90 ug/ml



#19 n-Tetratriacontane (C34)

R.T.: 19.656 min
 Delta R.T.: 0.018 min
 Response: 77856
 Conc: 0.65 ug/ml



#21 n-Octatriacontane (C38)

R.T.: 21.161 min
 Delta R.T.: 0.050 min
 Response: 858559
 Conc: 7.89 ug/ml