

Data Path : Z:\pestpcbsrv\HPCHEM1\FID\_E\Data\FE061224AL\  
 Data File : FE048663.D  
 Signal(s) : FID1B.ch  
 Acq On : 12 Jun 2024 08:18  
 Operator : YP\AJ  
 Sample : I.BLK  
 Misc :  
 ALS Vial : 1 Sample Multiplier: 1

Instrument :  
 FID\_E  
 ClientSampleId :

Integration File: autoint1.e  
 Quant Time: Jun 13 01:23:57 2024  
 Quant Method : Z:\pestpcbsrv\HPCHEM1\FID\_E\methods\Aliphatic EPH 052524.M  
 Quant Title : GC Extractables  
 QLast Update : Fri May 24 16:28:51 2024  
 Response via : Initial Calibration  
 Integrator: ChemStation

Volume Inj. : 1 ul  
 Signal Phase : Rxi-1ms  
 Signal Info : 20M x 0.18mm x 0.18um

Compound	R.T.	Response	Conc Units
-----			
System Monitoring Compounds			
Target Compounds			
19) T n-Tetratriacontane (C34)	19.701	39505	0.289 ug/ml
20) T n-Hexatriacontane (C36)	20.389f	20562	0.151 ug/ml
-----			

(f)=RT Delta > 1/2 Window

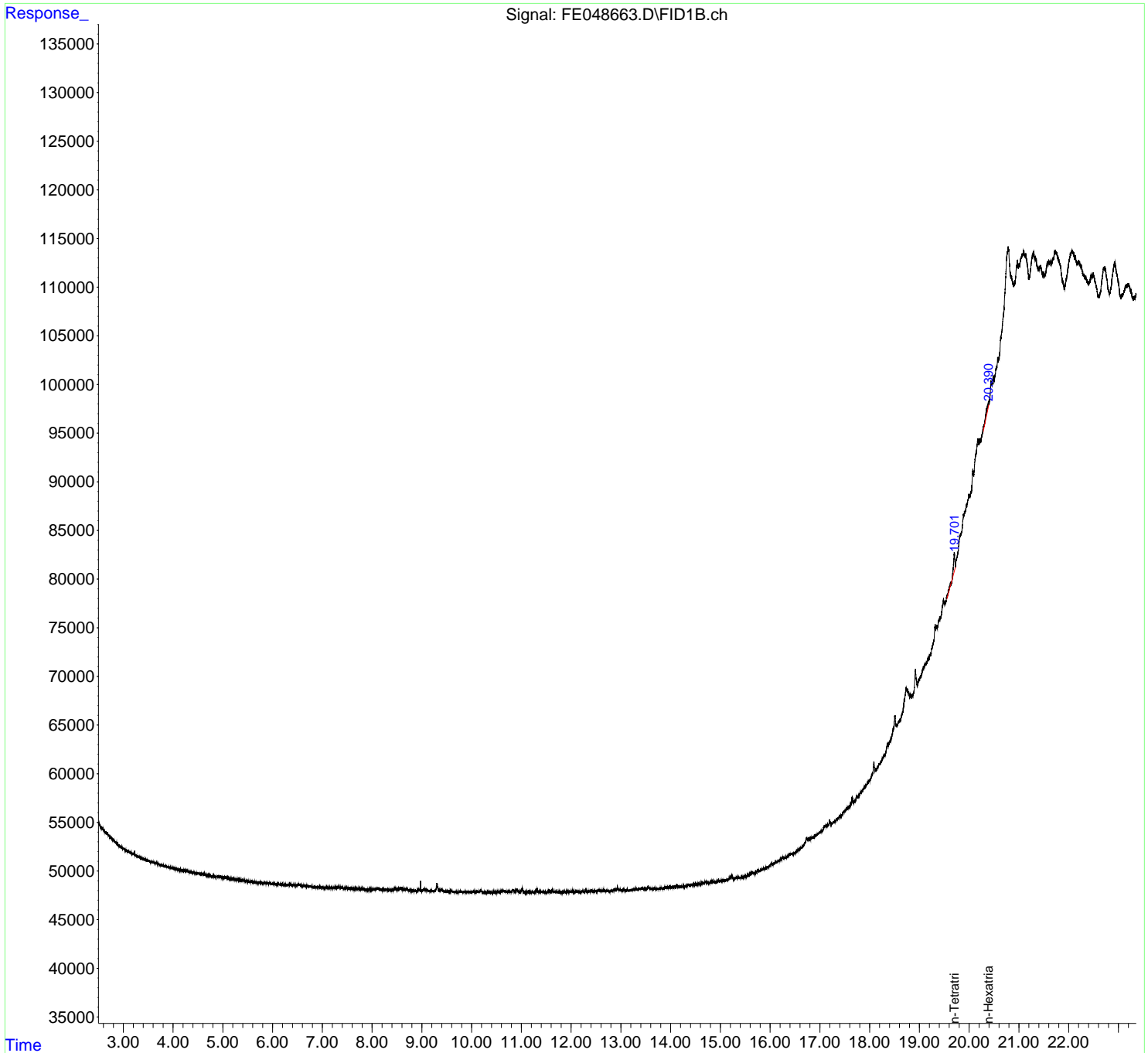
(m)=manual int.

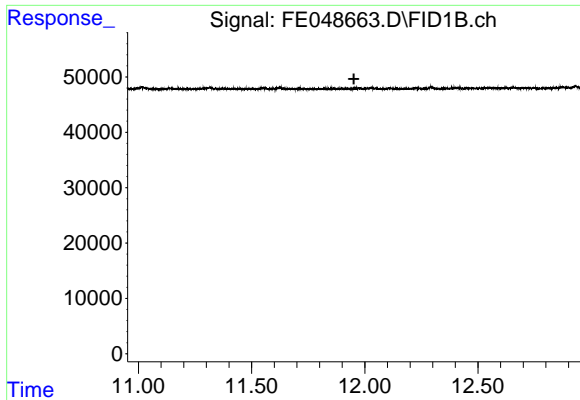
Data Path : Z:\pestpcbsrv\HPCHEM1\FID\_E\Data\FE061224AL\  
 Data File : FE048663.D  
 Signal(s) : FID1B.ch  
 Acq On : 12 Jun 2024 08:18  
 Operator : YP\AJ  
 Sample : I.BLK  
 Misc :  
 ALS Vial : 1 Sample Multiplier: 1

Instrument :  
 FID\_E  
 ClientSampleId :

Integration File: autoint1.e  
 Quant Time: Jun 13 01:23:57 2024  
 Quant Method : Z:\pestpcbsrv\HPCHEM1\FID\_E\methods\Aliphatic EPH 052524.M  
 Quant Title : GC Extractables  
 QLast Update : Fri May 24 16:28:51 2024  
 Response via : Initial Calibration  
 Integrator: ChemStation

Volume Inj. : 1 ul  
 Signal Phase : Rxi-1ms  
 Signal Info : 20M x 0.18mm x 0.18um

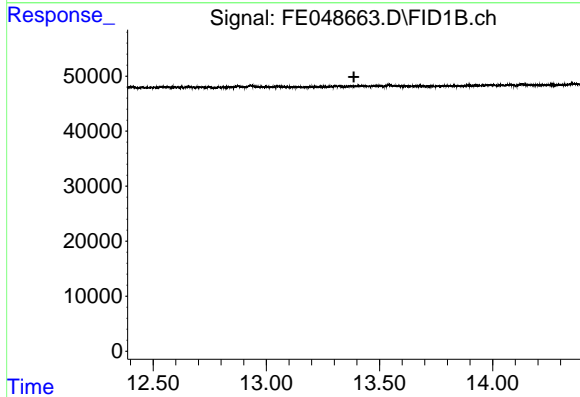




#9 ortho-Terphenyl (SURR)

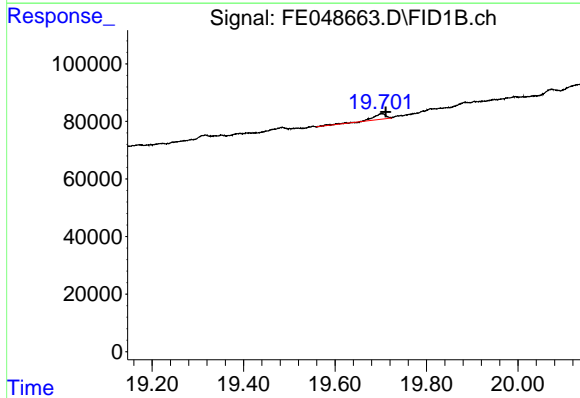
R.T.: 0.000 min  
 Exp R.T.: 11.952 min  
 Response: 0  
 Conc: N.D.

Instrument : FID\_E  
 ClientSampleId :



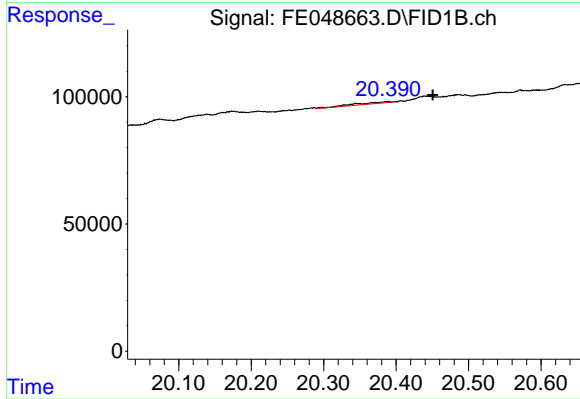
#12 1-chlorooctadecane (SURR)

R.T.: 0.000 min  
 Exp R.T.: 13.387 min  
 Response: 0  
 Conc: N.D.



#19 n-Tetratriacontane (C34)

R.T.: 19.701 min  
 Delta R.T.: -0.010 min  
 Response: 39505  
 Conc: 0.29 ug/ml



#20 n-Hexatriacontane (C36)

R.T.: 20.389 min  
 Delta R.T.: -0.061 min  
 Response: 20562  
 Conc: 0.15 ug/ml