

Data Path : Z:\pestpcbsrv\HPCHEM1\FID\_E\Data\FE061424AL\  
 Data File : FE048730.D  
 Signal(s) : FID1B.ch  
 Acq On : 14 Jun 2024 15:53  
 Operator : YP\AJ  
 Sample : P2889-01D  
 Misc :  
 ALS Vial : 12 Sample Multiplier: 1

Instrument :  
 FID\_E  
 ClientSampleId :

Integration File: autoint1.e  
 Quant Time: Jun 15 00:52:35 2024  
 Quant Method : Z:\pestpcbsrv\HPCHEM1\FID\_E\methods\Aliphatic EPH 052524.M  
 Quant Title : GC Extractables  
 QLast Update : Fri May 24 16:28:51 2024  
 Response via : Initial Calibration  
 Integrator: ChemStation

Volume Inj. : 1 ul  
 Signal Phase : Rxi-1ms  
 Signal Info : 20M x 0.18mm x 0.18um

Compound	R.T.	Response	Conc Units
-----			
System Monitoring Compounds			
9) S ortho-Terphenyl (SURR)	11.939	5887096	40.998 ug/ml
Spiked Amount	50.000	Recovery =	82.00%
12) S 1-chlorooctadecane (S...	13.374	4934994	45.299 ug/ml
Spiked Amount	50.000	Recovery =	90.60%
Target Compounds			
8) T n-Octadecane (C18)	11.617	56598	0.408 ug/ml
10) T n-Eicosane (C20)	12.923	143857	1.087 ug/ml
13) T n-Docosane (C22)	14.123	114936	0.892 ug/ml
14) T n-Tetracosane (C24)	15.225	253306	1.955 ug/ml
15) T n-Hexacosane (C26)	16.245	234623	1.810 ug/ml
16) T n-Octacosane (C28)	17.195	277227	2.145 ug/ml
17) T n-Tricontane (C30)	18.081	335144	2.502 ug/ml
18) T n-Dotriacontane (C32)	18.912	359924	2.652 ug/ml
19) T n-Tetratriacontane (C34)	19.695	314389	2.298 ug/ml
20) T n-Hexatriacontane (C36)	20.435	193978	1.427 ug/ml
21) T n-Octatriacontane (C38)	21.170	107719	0.790 ug/ml
22) T n-Tetracontane (C40)	22.085	142374	1.040 ug/ml
-----			

(f)=RT Delta > 1/2 Window

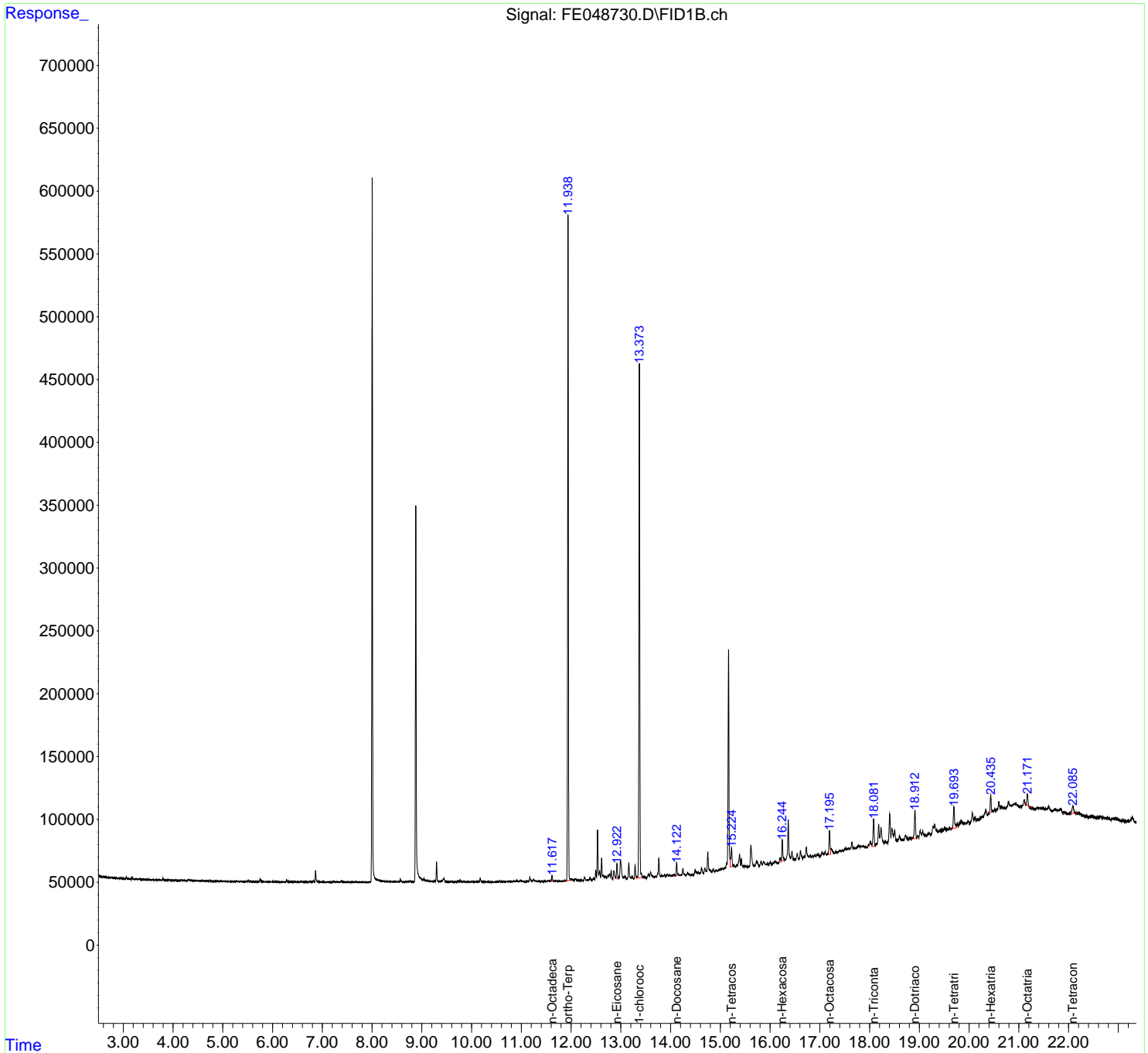
(m)=manual int.

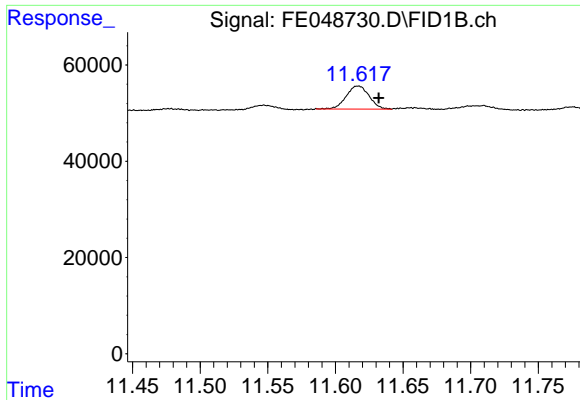
Data Path : Z:\pestpcbsrv\HPCHEM1\FID\_E\Data\FE061424AL\  
 Data File : FE048730.D  
 Signal(s) : FID1B.ch  
 Acq On : 14 Jun 2024 15:53  
 Operator : YP\AJ  
 Sample : P2889-01D  
 Misc :  
 ALS Vial : 12 Sample Multiplier: 1

Instrument :  
 FID\_E  
 ClientSampleId :

Integration File: autoint1.e  
 Quant Time: Jun 15 00:52:35 2024  
 Quant Method : Z:\pestpcbsrv\HPCHEM1\FID\_E\methods\Aliphatic EPH 052524.M  
 Quant Title : GC Extractables  
 QLast Update : Fri May 24 16:28:51 2024  
 Response via : Initial Calibration  
 Integrator: ChemStation

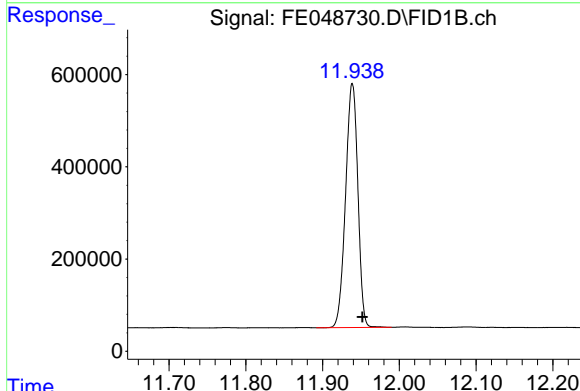
Volume Inj. : 1 ul  
 Signal Phase : Rxi-1ms  
 Signal Info : 20M x 0.18mm x 0.18um



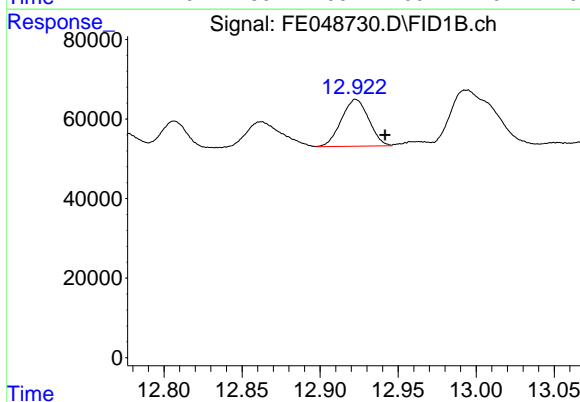


#8 n-Octadecane (C18)  
 R.T.: 11.617 min  
 Delta R.T.: -0.015 min  
 Response: 56598  
 Conc: 0.41 ug/ml

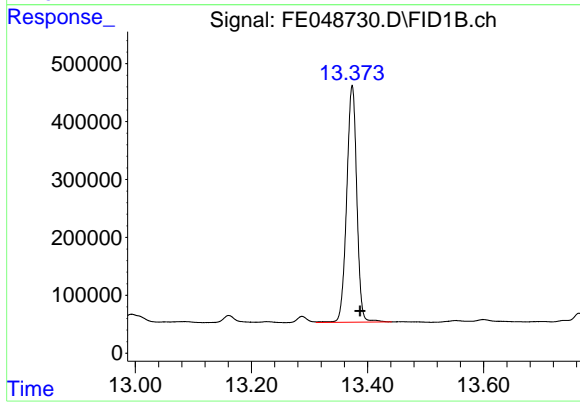
Instrument :  
 FID\_E  
 ClientSampleId :



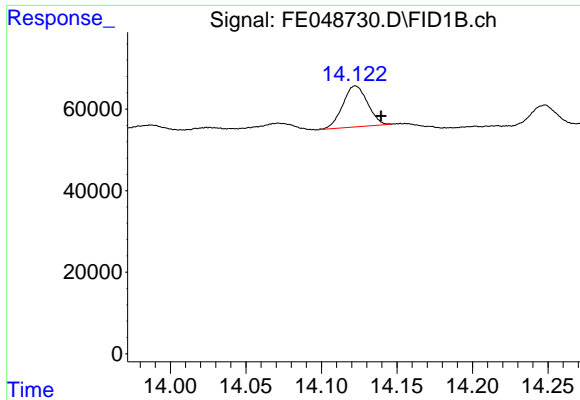
#9 ortho-Terphenyl (SURR)  
 R.T.: 11.939 min  
 Delta R.T.: -0.013 min  
 Response: 5887096  
 Conc: 41.00 ug/ml



#10 n-Eicosane (C20)  
 R.T.: 12.923 min  
 Delta R.T.: -0.019 min  
 Response: 143857  
 Conc: 1.09 ug/ml



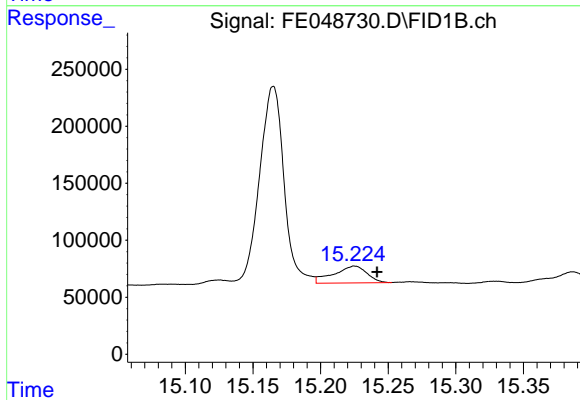
#12 1-chlorooctadecane (SURR)  
 R.T.: 13.374 min  
 Delta R.T.: -0.013 min  
 Response: 4934994  
 Conc: 45.30 ug/ml



#13 n-Docosane (C22)

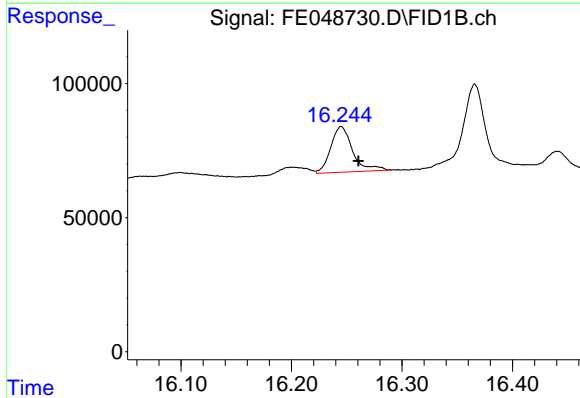
R.T.: 14.123 min  
Delta R.T.: -0.017 min  
Response: 114936  
Conc: 0.89 ug/ml

Instrument :  
FID\_E  
ClientSampleId :



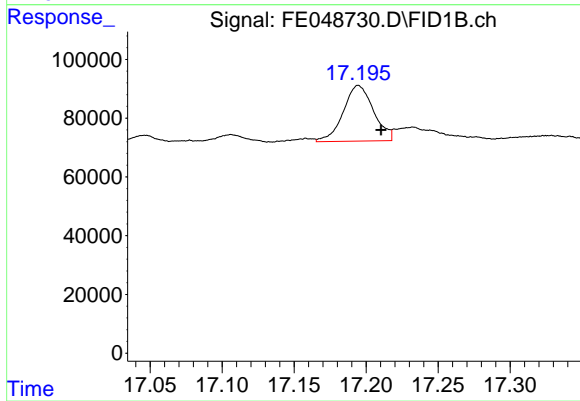
#14 n-Tetracosane (C24)

R.T.: 15.225 min  
Delta R.T.: -0.016 min  
Response: 253306  
Conc: 1.96 ug/ml



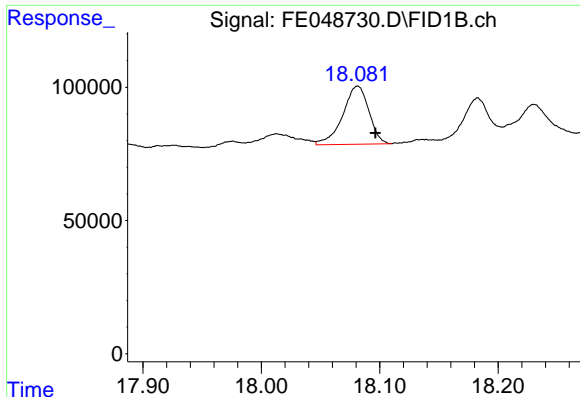
#15 n-Hexacosane (C26)

R.T.: 16.245 min  
Delta R.T.: -0.016 min  
Response: 234623  
Conc: 1.81 ug/ml



#16 n-Octacosane (C28)

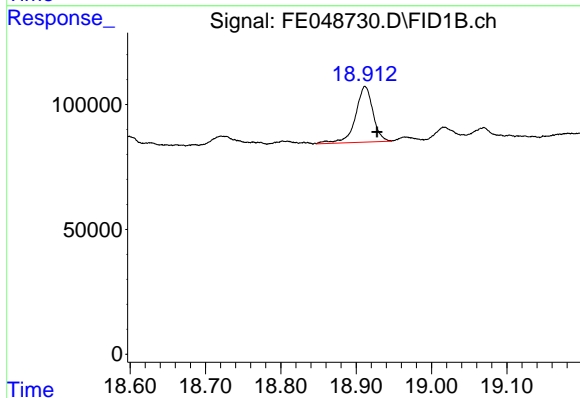
R.T.: 17.195 min  
Delta R.T.: -0.016 min  
Response: 277227  
Conc: 2.14 ug/ml



#17 n-Tricontane (C30)

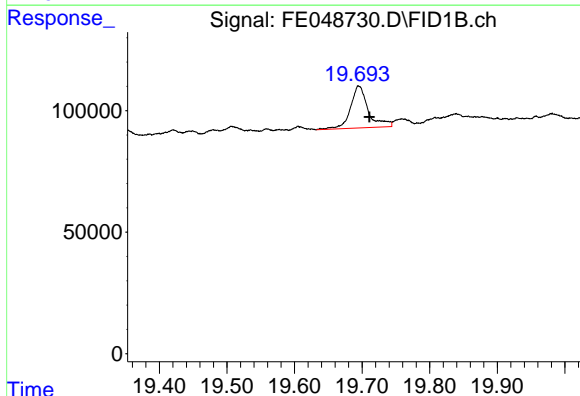
R.T.: 18.081 min  
 Delta R.T.: -0.015 min  
 Response: 335144  
 Conc: 2.50 ug/ml

Instrument :  
 FID\_E  
 ClientSampleId :



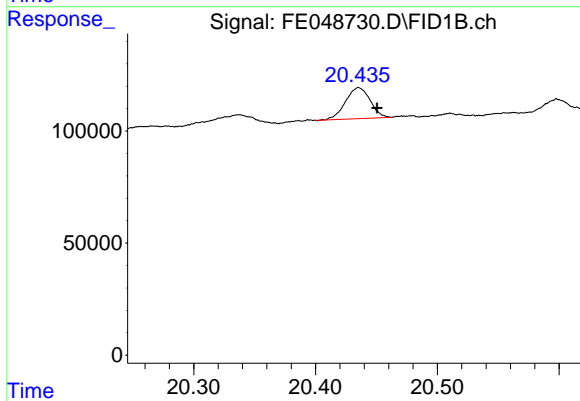
#18 n-Dotriacontane (C32)

R.T.: 18.912 min  
 Delta R.T.: -0.016 min  
 Response: 359924  
 Conc: 2.65 ug/ml



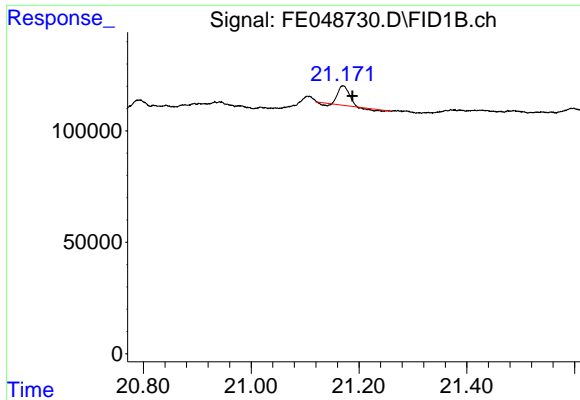
#19 n-Tetratriacontane (C34)

R.T.: 19.695 min  
 Delta R.T.: -0.016 min  
 Response: 314389  
 Conc: 2.30 ug/ml



#20 n-Hexatriacontane (C36)

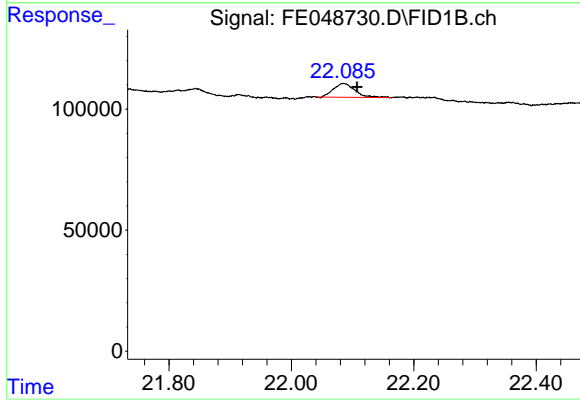
R.T.: 20.435 min  
 Delta R.T.: -0.015 min  
 Response: 193978  
 Conc: 1.43 ug/ml



#21 n-Octatriacontane (C38)

R.T.: 21.170 min  
 Delta R.T.: -0.017 min  
 Response: 107719  
 Conc: 0.79 ug/ml

Instrument :  
 FID\_E  
 ClientSampleId :



#22 n-Tetracontane (C40)

R.T.: 22.085 min  
 Delta R.T.: -0.022 min  
 Response: 142374  
 Conc: 1.04 ug/ml