

Data Path : Z:\pestpcbsrv\HPCHEM1\FID\_E\Data\FE061523AL\  
 Data File : FE042634.D  
 Signal(s) : FID1B.ch  
 Acq On : 15 Jun 2023 19:26  
 Operator : YP\AJ  
 Sample : 03229-07  
 Misc :  
 ALS Vial : 18 Sample Multiplier: 1

Instrument :  
 FID\_E  
 ClientSampleId :

Integration File: autoint1.e  
 Quant Time: Jun 16 00:50:19 2023  
 Quant Method : Z:\pestpcbsrv\HPCHEM1\FID\_E\methods\Aliphatic EPH 051823.M  
 Quant Title : GC Extractables  
 QLast Update : Thu May 18 06:27:12 2023  
 Response via : Initial Calibration  
 Integrator: ChemStation

Volume Inj. : 1 ul  
 Signal Phase : Rxi-1ms  
 Signal Info : 20M x 0.18mm x 0.18um

Compound	R.T.	Response	Conc Units
System Monitoring Compounds			
9) S ortho-Terphenyl (SURR)	11.937	4257308	24.110 ug/ml
Spiked Amount	50.000	Recovery =	48.22%
12) S 1-chlorooctadecane (S...	13.373	3183400	23.957 ug/ml
Spiked Amount	50.000	Recovery =	47.91%

Target Compounds

(f)=RT Delta > 1/2 Window

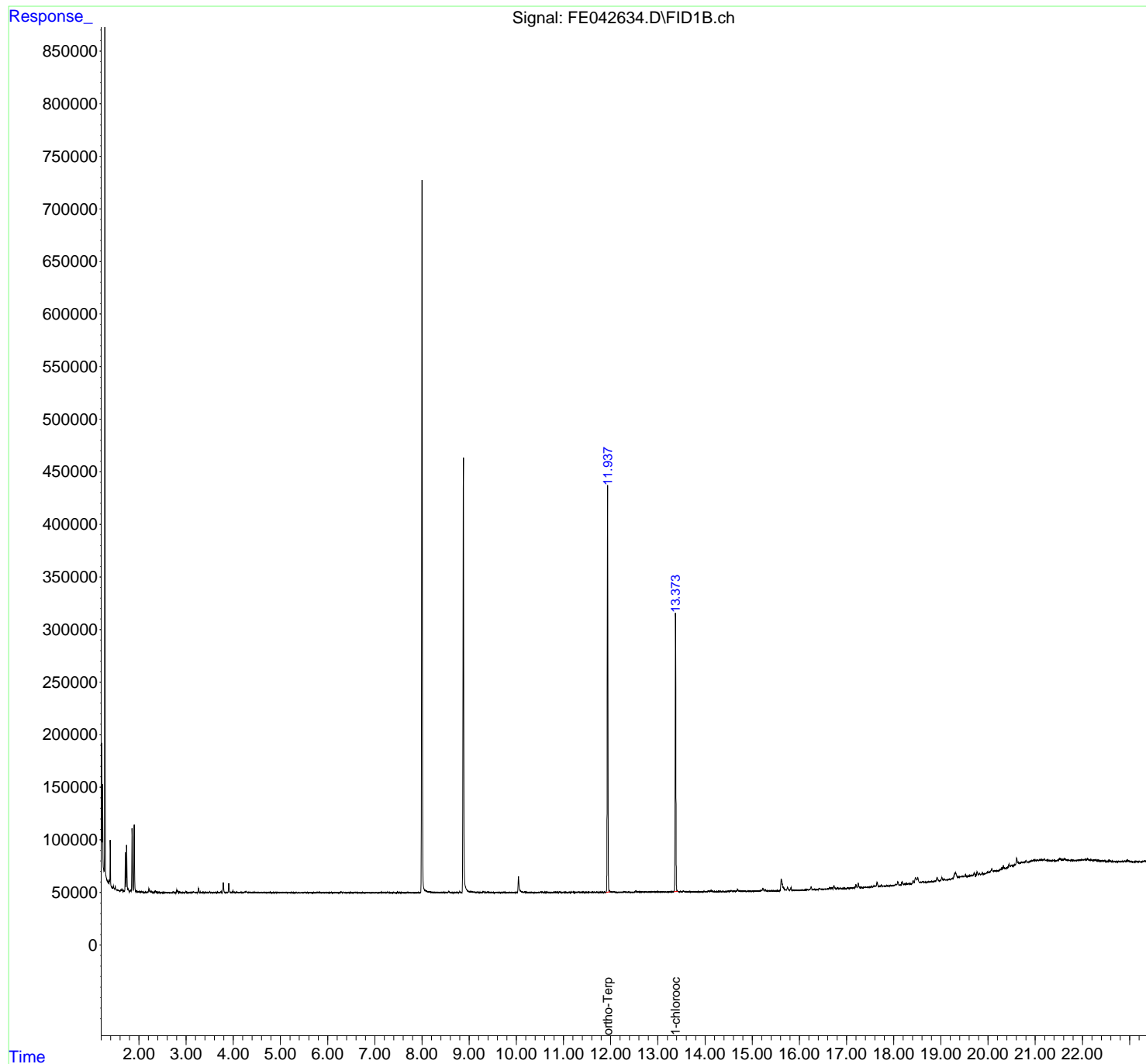
(m)=manual int.

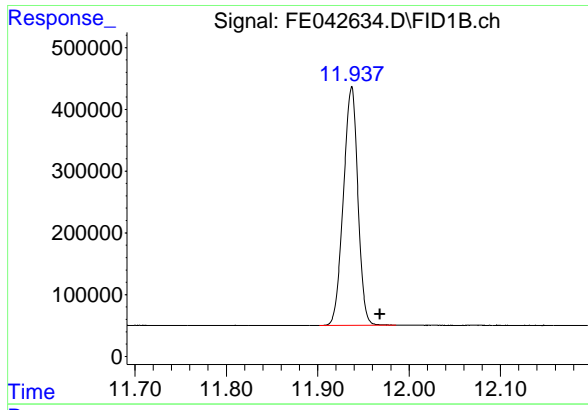
Data Path : Z:\pestpcbsrv\HPCHEM1\FID\_E\Data\FE061523AL\  
Data File : FE042634.D  
Signal(s) : FID1B.ch  
Acq On : 15 Jun 2023 19:26  
Operator : YP\AJ  
Sample : 03229-07  
Misc :  
ALS Vial : 18 Sample Multiplier: 1

Instrument :  
FID\_E  
ClientSampleId :

Integration File: autoint1.e  
Quant Time: Jun 16 00:50:19 2023  
Quant Method : Z:\pestpcbsrv\HPCHEM1\FID\_E\methods\Aliphatic EPH 051823.M  
Quant Title : GC Extractables  
QLast Update : Thu May 18 06:27:12 2023  
Response via : Initial Calibration  
Integrator: ChemStation

Volume Inj. : 1 ul  
Signal Phase : Rxi-1ms  
Signal Info : 20M x 0.18mm x 0.18um

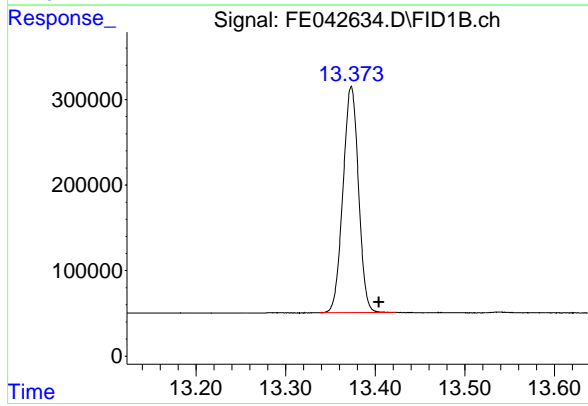




#9 ortho-Terphenyl (SURR)

R.T.: 11.937 min  
Delta R.T.: -0.031 min  
Response: 4257308  
Conc: 24.11 ug/ml

Instrument :  
FID\_E  
ClientSampleId :



#12 1-chlorooctadecane (SURR)

R.T.: 13.373 min  
Delta R.T.: -0.031 min  
Response: 3183400  
Conc: 23.96 ug/ml