

Data Path : Z:\pestpcbsrv\HPCHEM1\FID_E\Data\FE061523AL\
 Data File : FE042649.D
 Signal(s) : FID1B.ch
 Acq On : 16 Jun 2023 04:03
 Operator : YP\AJ
 Sample : 03260-01
 Misc :
 ALS Vial : 31 Sample Multiplier: 1

Instrument :
 FID_E
ClientSampleId :
 WC-1

Manual Integrations
APPROVED
 Reviewed By :Yogesh Patel 06/16/2023
 Supervised By :Ankita Jodhani 06/16/2023

Integration File: autoint1.e
 Quant Time: Jun 16 05:18:02 2023
 Quant Method : Z:\pestpcbsrv\HPCHEM1\FID_E\methods\Aliphatic EPH 051823.M
 Quant Title : GC Extractables
 QLast Update : Thu May 18 06:27:12 2023
 Response via : Initial Calibration
 Integrator: ChemStation

Volume Inj. : 1 ul
 Signal Phase : Rxi-1ms
 Signal Info : 20M x 0.18mm x 0.18um

Compound	R.T.	Response	Conc Units

System Monitoring Compounds			
9) S ortho-Terphenyl (SURR)	11.962	7639883	43.266 ug/mlm
Spiked Amount	50.000	Recovery =	86.53%
12) S 1-chlorooctadecane (S...	13.409	4157477	31.288 ug/mlm
Spiked Amount	50.000	Recovery =	62.58%

Target Compounds

(f)=RT Delta > 1/2 Window

(m)=manual int.

Data Path : Z:\pestpcbsrv\HPCHEM1\FID_E\Data\FE061523AL\
Data File : FE042649.D
Signal(s) : FID1B.ch
Acq On : 16 Jun 2023 04:03
Operator : YP\AJ
Sample : 03260-01
Misc :
ALS Vial : 31 Sample Multiplier: 1

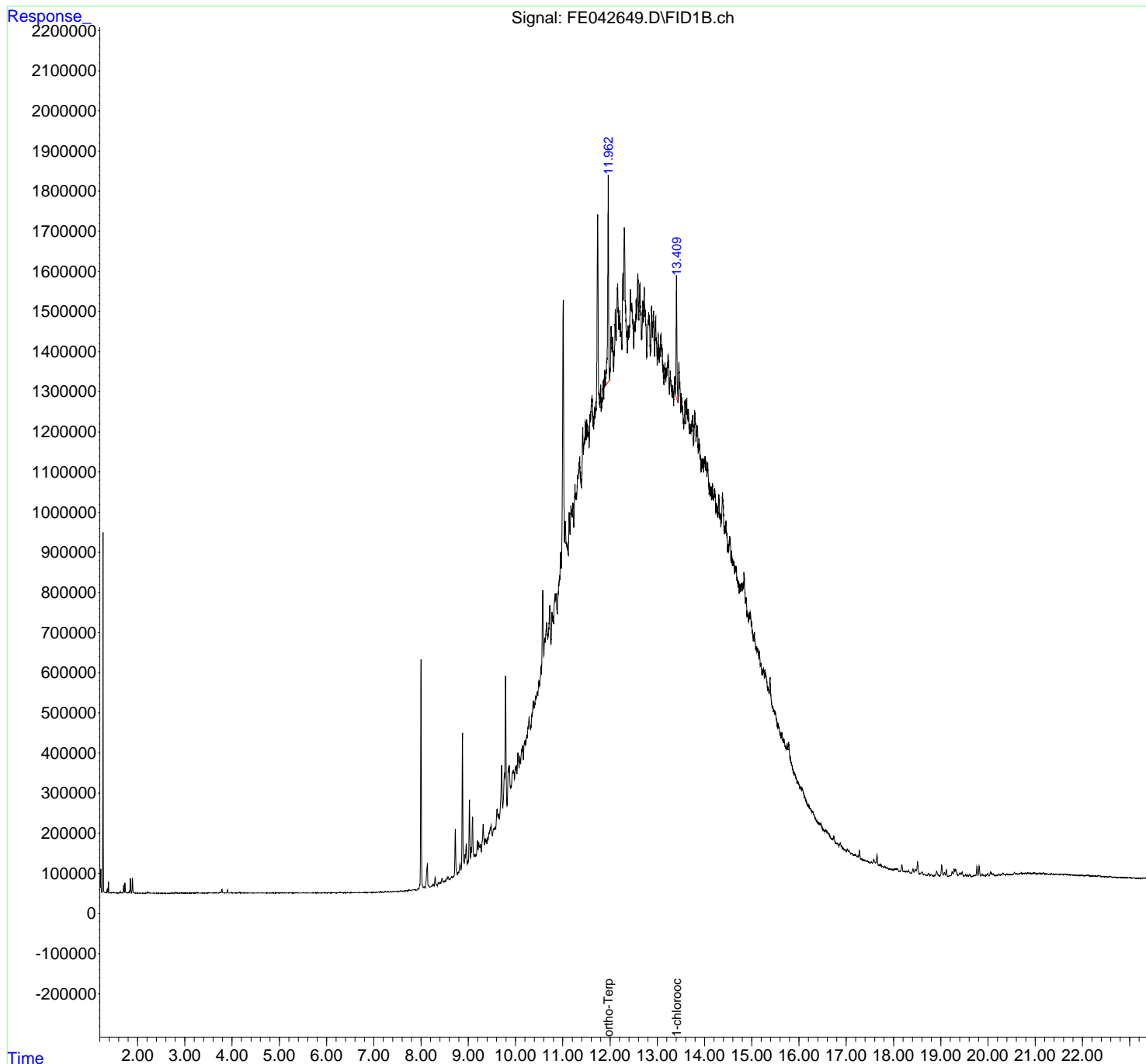
Instrument :
FID_E
ClientSampleId :
WC-1

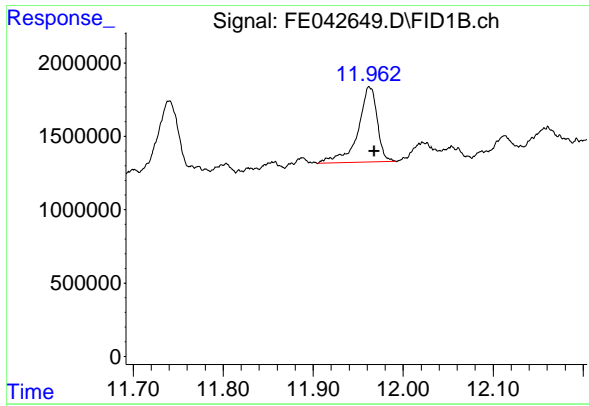
Manual Integrations
APPROVED

Reviewed By :Yogesh Patel 06/16/2023
Supervised By :Ankita Jodhani 06/16/2023

Integration File: autoint1.e
Quant Time: Jun 16 05:18:02 2023
Quant Method : Z:\pestpcbsrv\HPCHEM1\FID_E\methods\Aliphatic EPH 051823.
Quant Title : GC Extractables
QLast Update : Thu May 18 06:27:12 2023
Response via : Initial Calibration
Integrator: ChemStation

Volume Inj. : 1 ul
Signal Phase : Rxi-1ms
Signal Info : 20M x 0.18mm x 0.18um





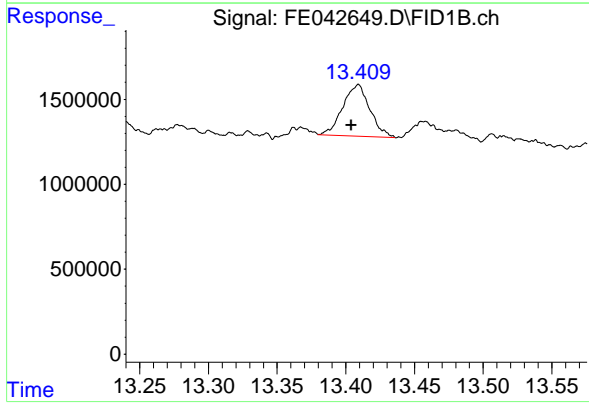
#9 ortho-Terphenyl (SURRE)

R.T.: 11.962 min
 Delta R.T.: -0.007 min
 Response: 7639883
 Conc: 43.27 ug/ml

Instrument :
 FID_E
 ClientSampleId :
 WC-1

Manual Integrations
 APPROVED

Reviewed By :Yogesh Patel 06/16/2023
 Supervised By :Ankita Jodhani 06/16/2023



#12 1-chlorooctadecane (SURRE)

R.T.: 13.409 min
 Delta R.T.: 0.005 min
 Response: 4157477
 Conc: 31.29 ug/ml m