

Data Path : Z:\pestpcbsrv\HPCHEM1\FID_E\Data\FE061824AL\
 Data File : FE048775.D
 Signal(s) : FID1B.ch
 Acq On : 18 Jun 2024 18:59
 Operator : YP\AJ
 Sample : P2918-01
 Misc :
 ALS Vial : 17 Sample Multiplier: 1

Instrument :
 FID_E
 ClientSampleId :
 POLE

Integration File: autoint1.e
 Quant Time: Jun 19 01:24:30 2024
 Quant Method : Z:\pestpcbsrv\HPCHEM1\FID_E\methods\Aliphatic EPH 052524.M
 Quant Title : GC Extractables
 QLast Update : Fri May 24 16:28:51 2024
 Response via : Initial Calibration
 Integrator: ChemStation

Volume Inj. : 1 ul
 Signal Phase : Rxi-1ms
 Signal Info : 20M x 0.18mm x 0.18um

Compound	R.T.	Response	Conc Units

System Monitoring Compounds			
9) S ortho-Terphenyl (SURR)	11.938	6303053	43.894 ug/ml
Spiked Amount	50.000	Recovery	= 87.79%
12) S 1-chlorooctadecane (S...	13.372	5063852	46.482 ug/ml
Spiked Amount	50.000	Recovery	= 92.96%

Target Compounds

(f)=RT Delta > 1/2 Window

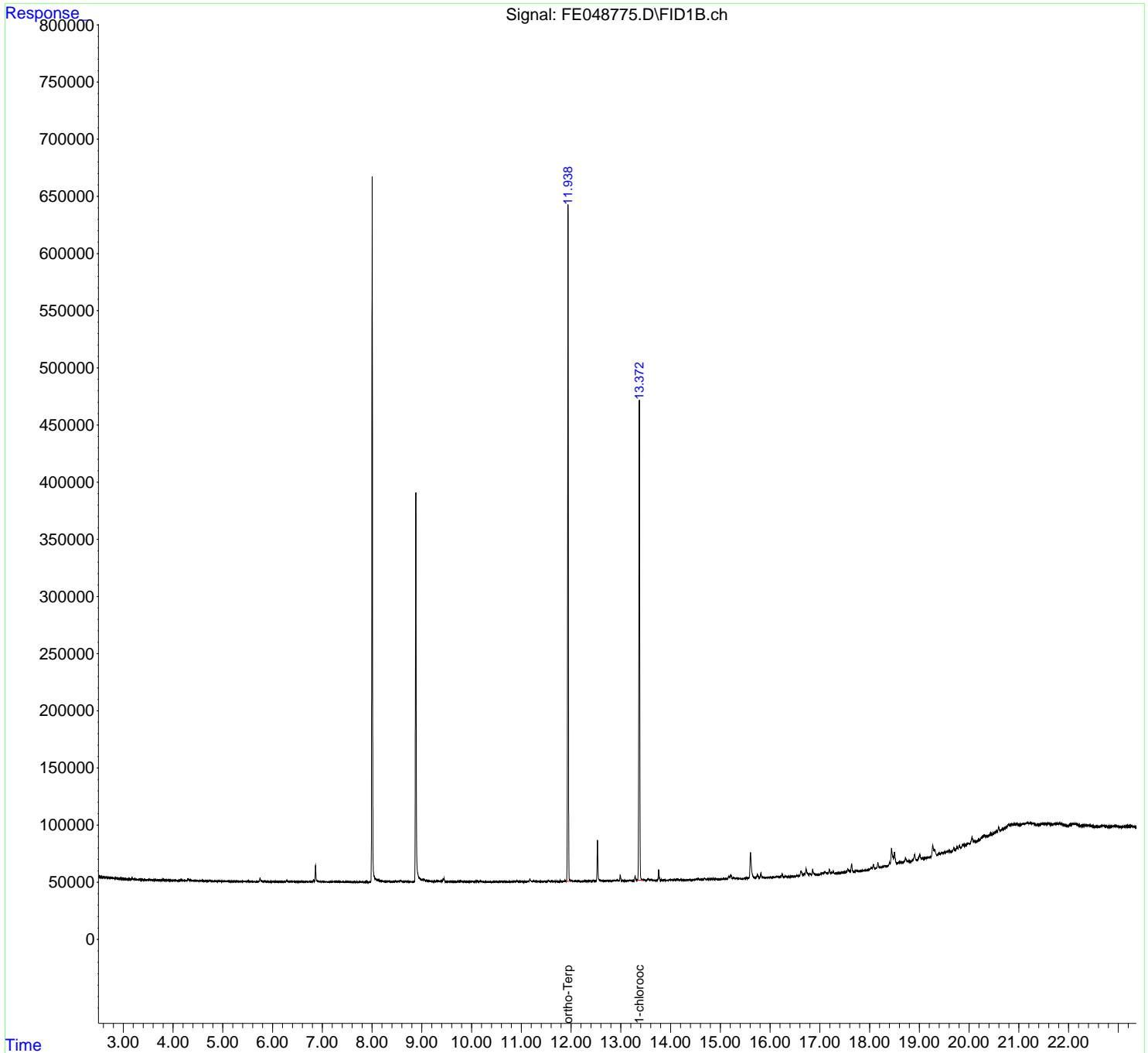
(m)=manual int.

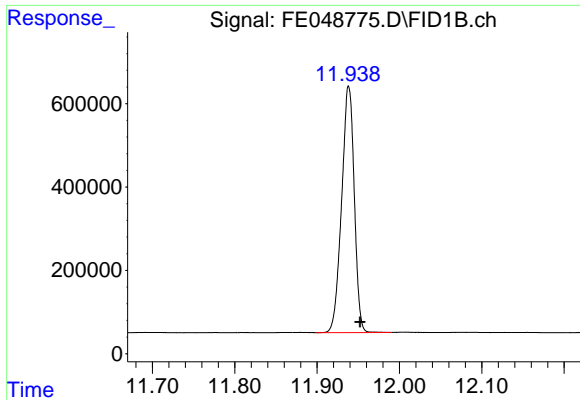
Data Path : Z:\pestpcbsrv\HPCHEM1\FID_E\Data\FE061824AL\
Data File : FE048775.D
Signal(s) : FID1B.ch
Acq On : 18 Jun 2024 18:59
Operator : YP\AJ
Sample : P2918-01
Misc :
ALS Vial : 17 Sample Multiplier: 1

Instrument :
FID_E
ClientSampleId :
POLE

Integration File: autoint1.e
Quant Time: Jun 19 01:24:30 2024
Quant Method : Z:\pestpcbsrv\HPCHEM1\FID_E\methods\Aliphatic EPH 052524.M
Quant Title : GC Extractables
QLast Update : Fri May 24 16:28:51 2024
Response via : Initial Calibration
Integrator: ChemStation

Volume Inj. : 1 ul
Signal Phase : Rxi-1ms
Signal Info : 20M x 0.18mm x 0.18um

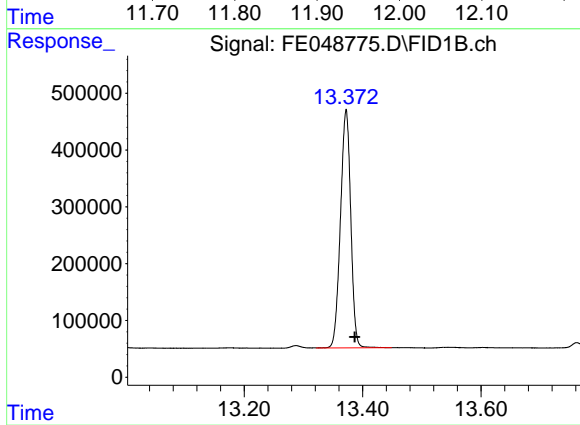




#9 ortho-Terphenyl (SURR)

R.T.: 11.938 min
Delta R.T.: -0.014 min
Response: 6303053
Conc: 43.89 ug/ml

Instrument :
FID_E
ClientSampleId :
POLE



#12 1-chlorooctadecane (SURR)

R.T.: 13.372 min
Delta R.T.: -0.015 min
Response: 5063852
Conc: 46.48 ug/ml