

Data Path : Z:\pestpcbsrv\HPCHEM1\FID_E\Data\FE061825AL\
 Data File : FE054493.D
 Signal(s) : FID1B.ch
 Acq On : 18 Jun 2025 21:00
 Operator : YP\AJ
 Sample : I.BLK
 Misc :
 ALS Vial : 1 Sample Multiplier: 1

Instrument :
 FID_E
 ClientSampleId :
 I.BLK

Integration File: autoint1.e
 Quant Time: Jun 19 01:37:32 2025
 Quant Method : Z:\pestpcbsrv\HPCHEM1\FID_E\methods\Aliphatic EPH 061025.M
 Quant Title : GC Extractables
 QLast Update : Tue Jun 10 07:24:04 2025
 Response via : Initial Calibration
 Integrator: ChemStation

Volume Inj. : 1 ul
 Signal Phase : Rxi-1ms
 Signal Info : 20M x 0.18mm x 0.18um

Compound	R.T.	Response	Conc Units
----------	------	----------	------------

 System Monitoring Compounds

Target Compounds

16) T	n-Octacosane (C28)	17.102	27195	0.222 ug/ml
17) T	n-Tricontane (C30)	17.989	42388	0.342 ug/ml
18) T	n-Dotriacontane (C32)	18.822	57176	0.455 ug/ml
19) T	n-Tetratriacontane (C34)	19.608	33775	0.271 ug/ml
20) T	n-Hexatriacontane (C36)	20.350	27796	0.216 ug/ml

 (f)=RT Delta > 1/2 Window

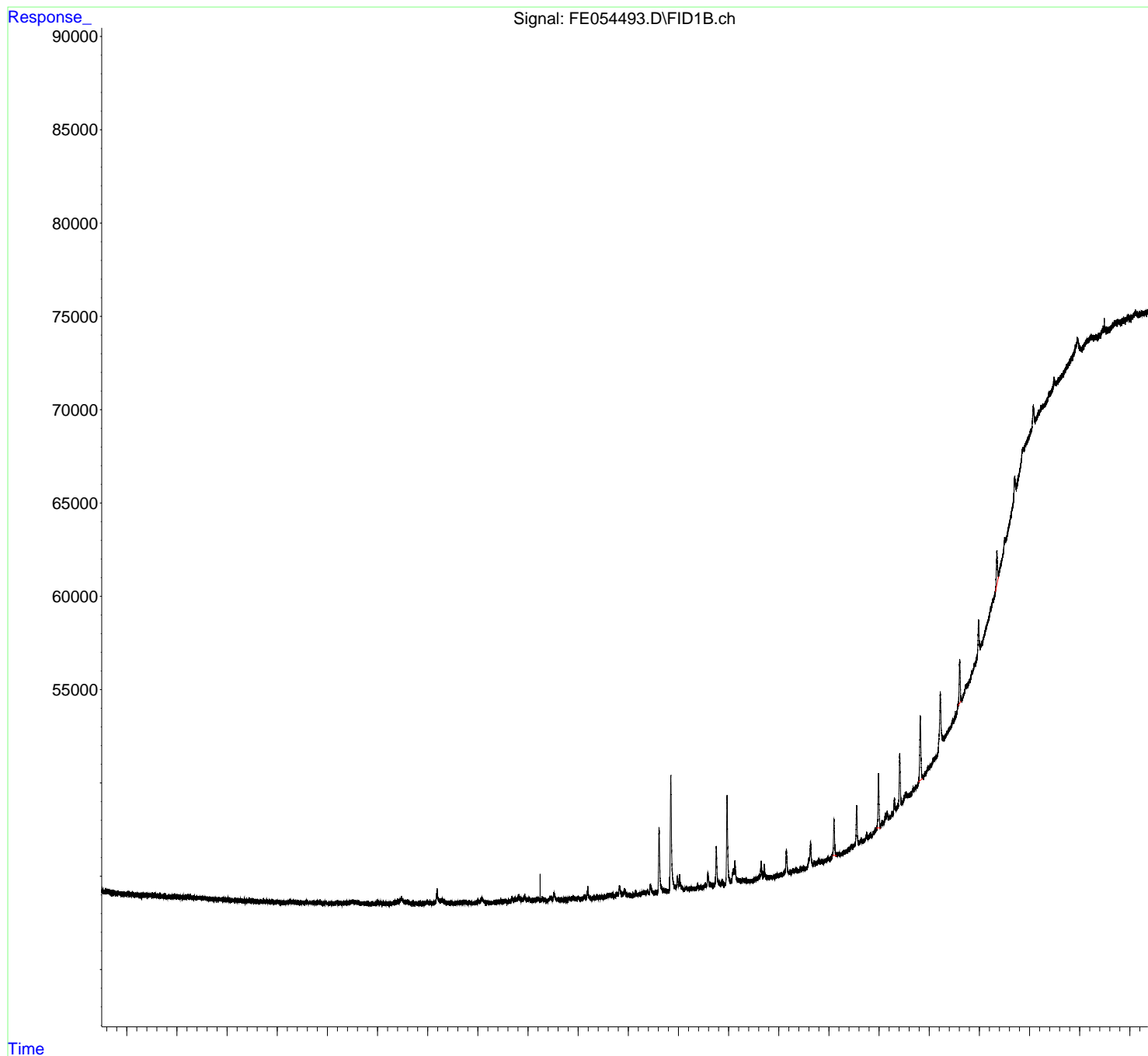
(m)=manual int.

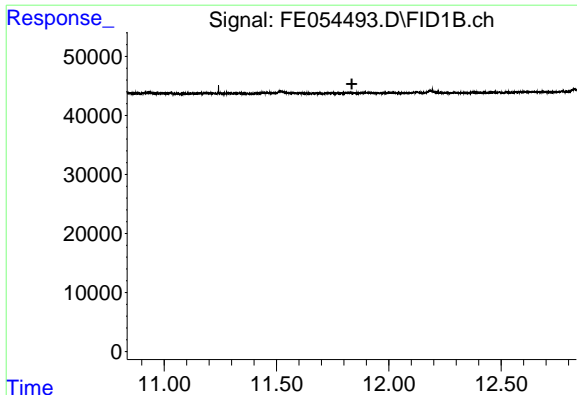
Data Path : Z:\pestpcbsrv\HPCHEM1\FID_E\Data\FE061825AL\
 Data File : FE054493.D
 Signal(s) : FID1B.ch
 Acq On : 18 Jun 2025 21:00
 Operator : YP\AJ
 Sample : I.BLK
 Misc :
 ALS Vial : 1 Sample Multiplier: 1

Instrument :
 FID_E
 ClientSampleId :
 I.BLK

Integration File: autoint1.e
 Quant Time: Jun 19 01:37:32 2025
 Quant Method : Z:\pestpcbsrv\HPCHEM1\FID_E\methods\Aliphatic EPH 061025.M
 Quant Title : GC Extractables
 QLast Update : Tue Jun 10 07:24:04 2025
 Response via : Initial Calibration
 Integrator: ChemStation

Volume Inj. : 1 uL
 Signal Phase : Rxi-1ms
 Signal Info : 20M x 0.18mm x 0.18um

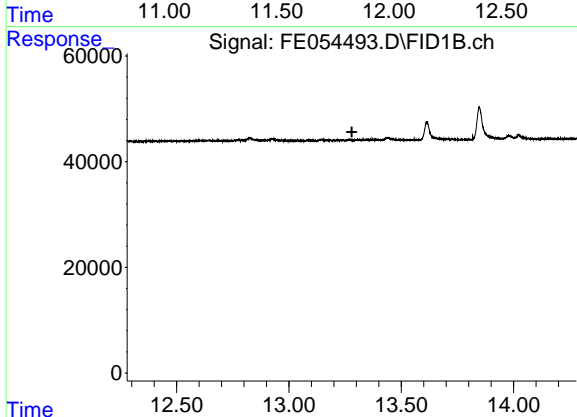




#9 ortho-Terphenyl (SURR)

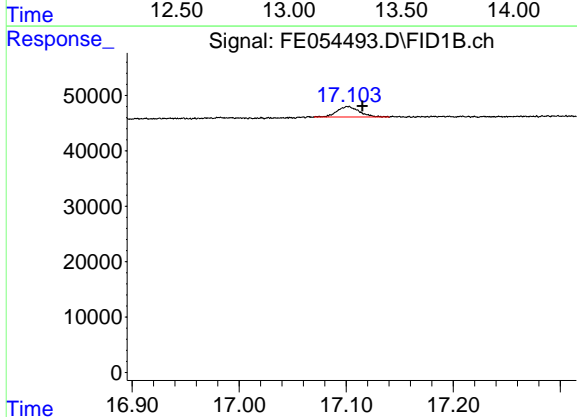
R.T.: 0.000 min
 Exp R.T.: 11.835 min
 Response: 0
 Conc: N.D.

Instrument :
 FID_E
 ClientSampleId :
 I.BLK



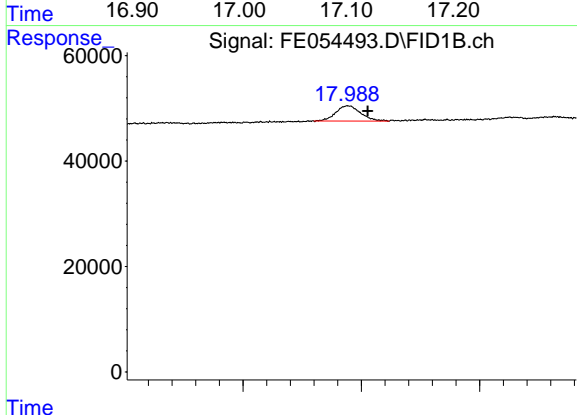
#12 1-chlorooctadecane (SURR)

R.T.: 0.000 min
 Exp R.T.: 13.280 min
 Response: 0
 Conc: N.D.



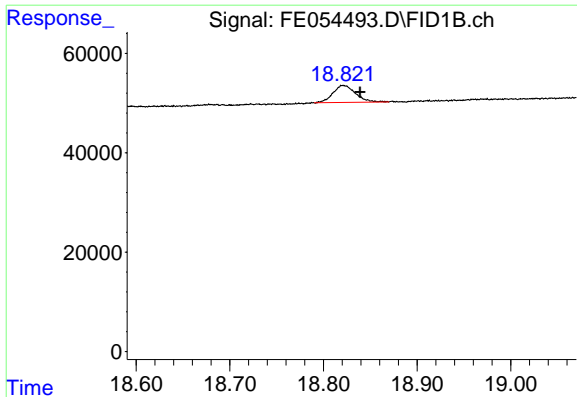
#16 n-Octacosane (C28)

R.T.: 17.102 min
 Delta R.T.: -0.014 min
 Response: 27195
 Conc: 0.22 ug/ml



#17 n-Tricontane (C30)

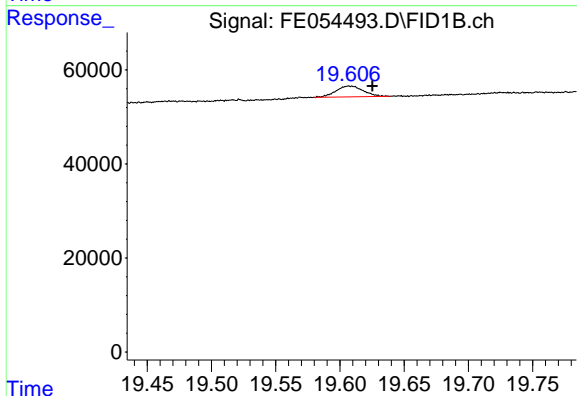
R.T.: 17.989 min
 Delta R.T.: -0.017 min
 Response: 42388
 Conc: 0.34 ug/ml



#18 n-Dotriacontane (C32)

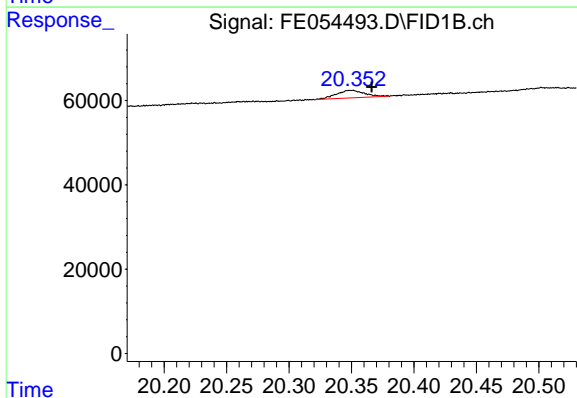
R.T.: 18.822 min
 Delta R.T.: -0.017 min
 Response: 57176
 Conc: 0.46 ug/ml

Instrument :
 FID_E
 ClientSampleId :
 I.BLK



#19 n-Tetraatriacontane (C34)

R.T.: 19.608 min
 Delta R.T.: -0.017 min
 Response: 33775
 Conc: 0.27 ug/ml



#20 n-Hexatriacontane (C36)

R.T.: 20.350 min
 Delta R.T.: -0.016 min
 Response: 27796
 Conc: 0.22 ug/ml