

Data Path : Z:\pestpcbsrv\HPCHEM1\FID\_E\Data\FE061924AL\  
 Data File : FE048781.D  
 Signal(s) : FID1B.ch  
 Acq On : 19 Jun 2024 12:18  
 Operator : YP\AJ  
 Sample : 20 PPM ALIPHATIC HC STD  
 Misc :  
 ALS Vial : 2 Sample Multiplier: 1

Instrument :  
 FID\_E  
 ClientSampleId :  
 20 PPM ALIPHATIC HC STD

Integration File: autoint1.e  
 Quant Time: Jun 20 01:19:58 2024  
 Quant Method : Z:\pestpcbsrv\HPCHEM1\FID\_E\methods\Aliphatic EPH 052524.M  
 Quant Title : GC Extractables  
 QLast Update : Fri May 24 16:28:51 2024  
 Response via : Initial Calibration  
 Integrator: ChemStation

Volume Inj. : 1 ul  
 Signal Phase : Rxi-1ms  
 Signal Info : 20M x 0.18mm x 0.18um

Compound	R.T.	Response	Conc Units
-----			
System Monitoring Compounds			
9) S ortho-Terphenyl (SURR)	11.935	2619329	18.241 ug/ml
Spiked Amount	50.000	Recovery	= 36.48%
12) S 1-chlorooctadecane (S...	13.369	1955795	17.953 ug/ml
Spiked Amount	50.000	Recovery	= 35.91%
Target Compounds			
1) T n-Nonane (C9)	3.325	2361819	15.798 ug/ml
2) T n-Decane (C10)	4.574	2583353	17.108 ug/ml
3) T A~Naphthalene (C11.7)	6.279	2501090	16.797 ug/ml
4) T n-Dodecane (C12)	6.739	2583433	17.453 ug/ml
5) T A~2-methylnaphthalene...	7.375	2391765	17.250 ug/ml
6) T n-Tetradecane (C14)	8.567	2533879	17.865 ug/ml
7) T n-Hexadecane (C16)	10.174	2555396	18.126 ug/ml
8) T n-Octadecane (C18)	11.616	2535026	18.253 ug/ml
10) T n-Eicosane (C20)	12.925	2415110	18.250 ug/ml
11) T n-Heneicosane (C21)	13.536	2354340	18.176 ug/ml
13) T n-Docosane (C22)	14.122	2368648	18.381 ug/ml
14) T n-Tetracosane (C24)	15.223	2425788	18.725 ug/ml
15) T n-Hexacosane (C26)	16.243	2467903	19.042 ug/ml
16) T n-Octacosane (C28)	17.193	2623745	20.299 ug/ml
17) T n-Tricontane (C30)	18.079	2979406	22.241 ug/ml
18) T n-Dotriacontane (C32)	18.911	3127150	23.038 ug/ml
19) T n-Tetratriacontane (C34)	19.693	2961042	21.645 ug/ml
20) T n-Hexatriacontane (C36)	20.432	2640920	19.428 ug/ml
21) T n-Octatriacontane (C38)	21.167	2566097	18.817 ug/ml
22) T n-Tetracontane (C40)	22.080	2502102	18.274 ug/ml
-----			

(f)=RT Delta > 1/2 Window

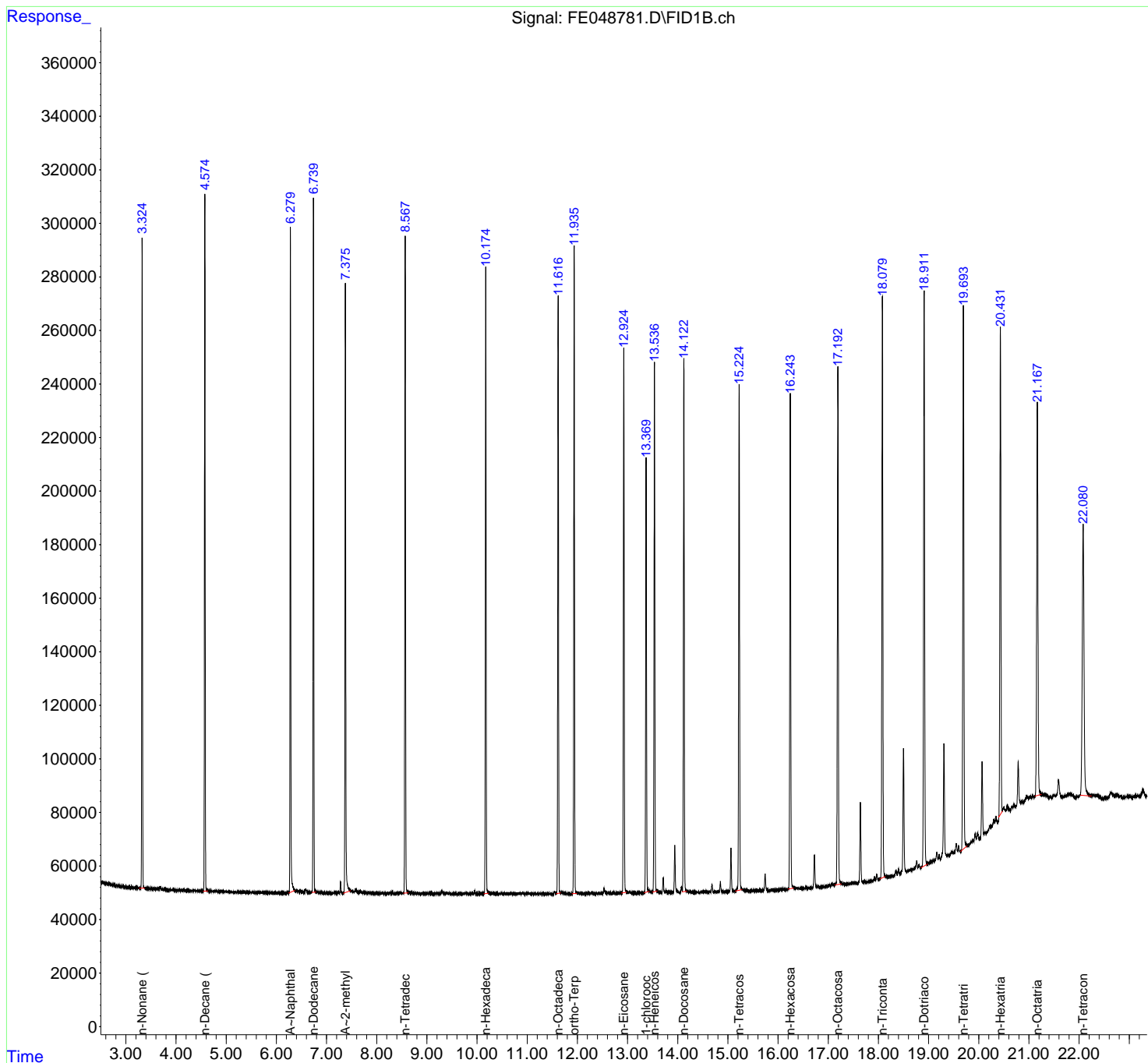
(m)=manual int.

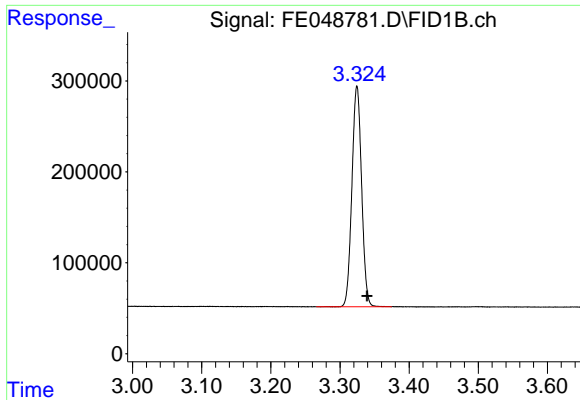
Data Path : Z:\pestpcbsrv\HPCHEM1\FID\_E\Data\FE061924AL\  
 Data File : FE048781.D  
 Signal(s) : FID1B.ch  
 Acq On : 19 Jun 2024 12:18  
 Operator : YP\AJ  
 Sample : 20 PPM ALIPHATIC HC STD  
 Misc :  
 ALS Vial : 2 Sample Multiplier: 1

Instrument :  
 FID\_E  
 ClientSampleId :  
 20 PPM ALIPHATIC HC STD

Integration File: autoint1.e  
 Quant Time: Jun 20 01:19:58 2024  
 Quant Method : Z:\pestpcbsrv\HPCHEM1\FID\_E\methods\Aliphatic EPH 052524.M  
 Quant Title : GC Extractables  
 QLast Update : Fri May 24 16:28:51 2024  
 Response via : Initial Calibration  
 Integrator: ChemStation

Volume Inj. : 1 ul  
 Signal Phase : Rxi-1ms  
 Signal Info : 20M x 0.18mm x 0.18um

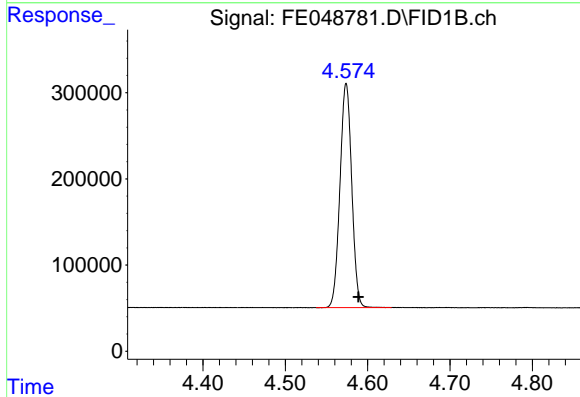




#1 n-Nonane (C9)

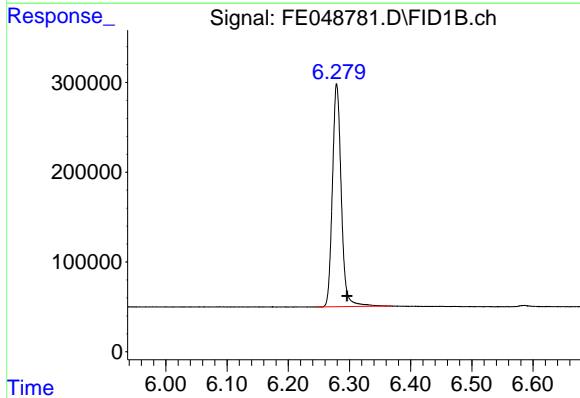
R.T.: 3.325 min  
 Delta R.T.: -0.014 min  
 Response: 2361819  
 Conc: 15.80 ug/ml

Instrument : FID\_E  
 ClientSampleId : 20 PPM ALIPHATIC HC STD



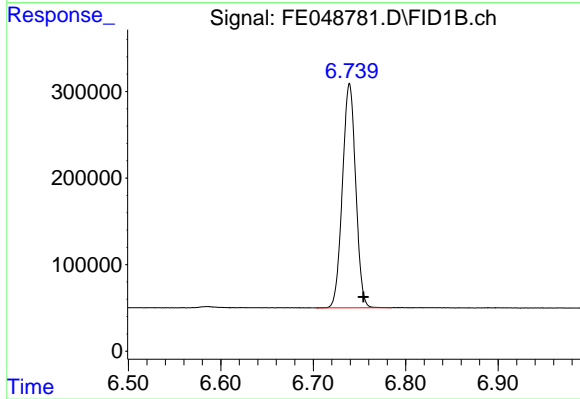
#2 n-Decane (C10)

R.T.: 4.574 min  
 Delta R.T.: -0.015 min  
 Response: 2583353  
 Conc: 17.11 ug/ml



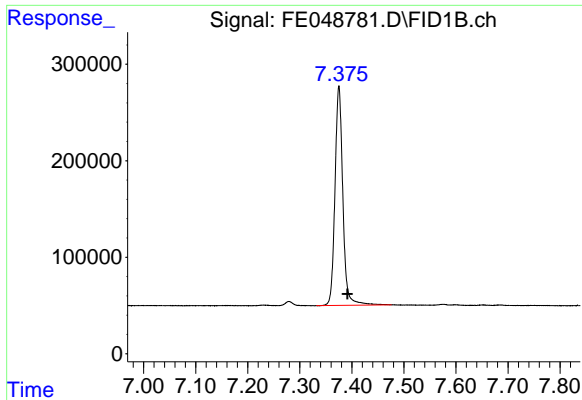
#3 A~Naphthalene (C11.7)

R.T.: 6.279 min  
 Delta R.T.: -0.017 min  
 Response: 2501090  
 Conc: 16.80 ug/ml



#4 n-Dodecane (C12)

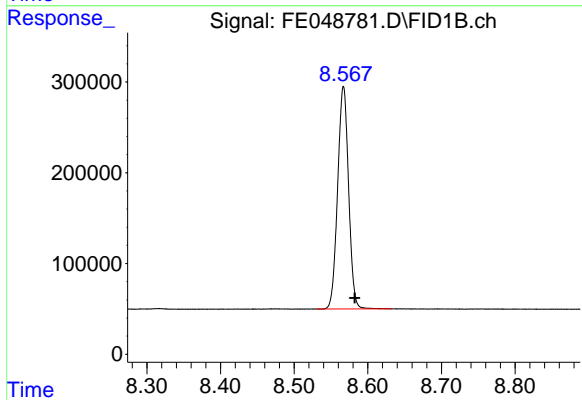
R.T.: 6.739 min  
 Delta R.T.: -0.015 min  
 Response: 2583433  
 Conc: 17.45 ug/ml



#5 A~2-methylnaphthalene (C12.89)

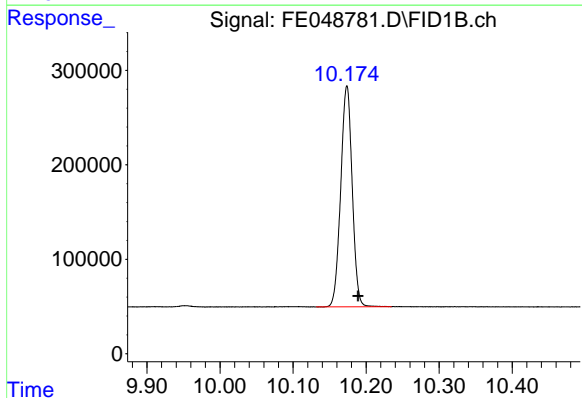
R.T.: 7.375 min  
 Delta R.T.: -0.016 min  
 Response: 2391765  
 Conc: 17.25 ug/ml

Instrument : FID\_E  
 ClientSampleId : 20 PPM ALIPHATIC HC STD



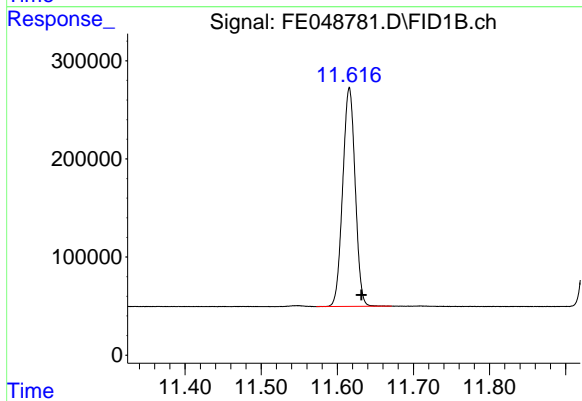
#6 n-Tetradecane (C14)

R.T.: 8.567 min  
 Delta R.T.: -0.015 min  
 Response: 2533879  
 Conc: 17.87 ug/ml



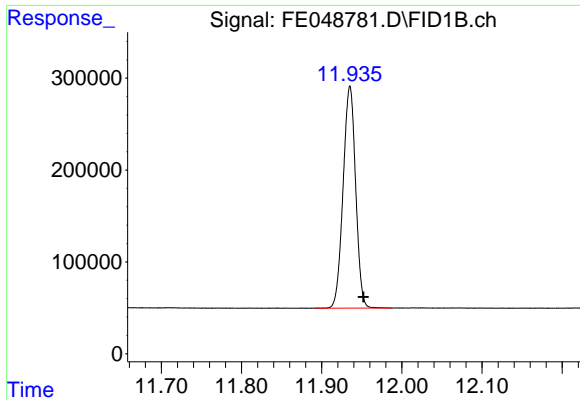
#7 n-Hexadecane (C16)

R.T.: 10.174 min  
 Delta R.T.: -0.015 min  
 Response: 2555396  
 Conc: 18.13 ug/ml



#8 n-Octadecane (C18)

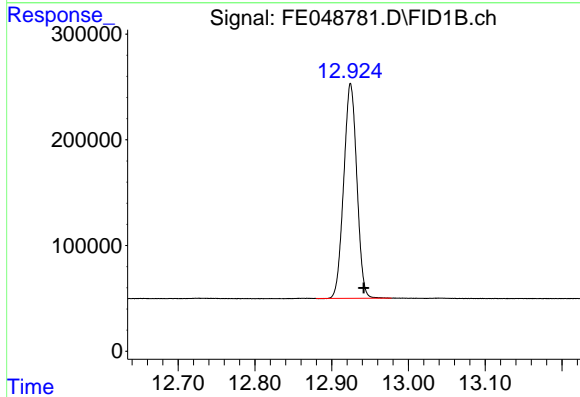
R.T.: 11.616 min  
 Delta R.T.: -0.016 min  
 Response: 2535026  
 Conc: 18.25 ug/ml



#9 ortho-Terphenyl (SURR)

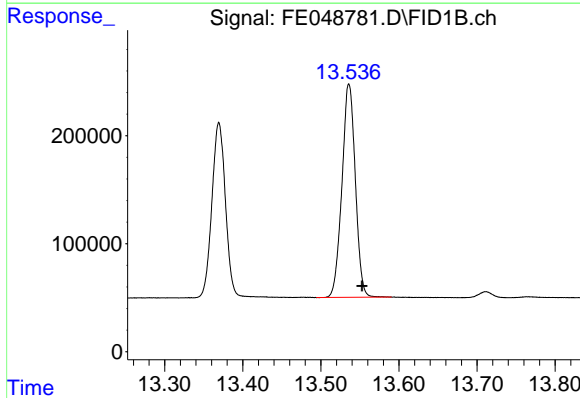
R.T.: 11.935 min  
 Delta R.T.: -0.017 min  
 Response: 2619329  
 Conc: 18.24 ug/ml

Instrument :  
 FID\_E  
 ClientSampleId :  
 20 PPM ALIPHATIC HC STD



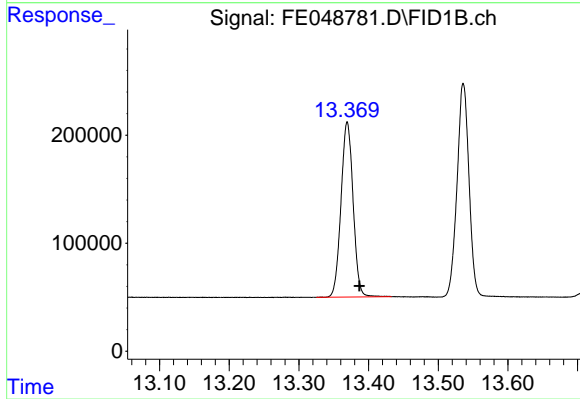
#10 n-Eicosane (C20)

R.T.: 12.925 min  
 Delta R.T.: -0.017 min  
 Response: 2415110  
 Conc: 18.25 ug/ml



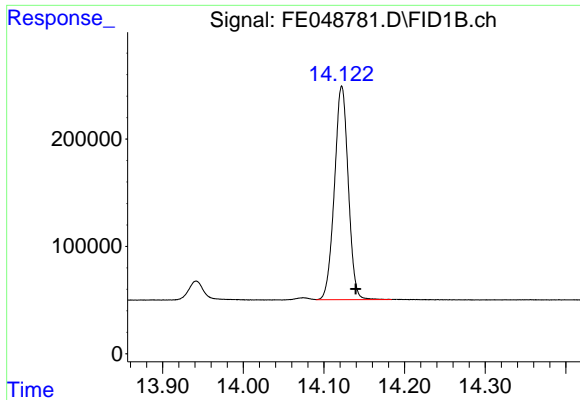
#11 n-Heneicosane (C21)

R.T.: 13.536 min  
 Delta R.T.: -0.017 min  
 Response: 2354340  
 Conc: 18.18 ug/ml



#12 1-chlorooctadecane (SURR)

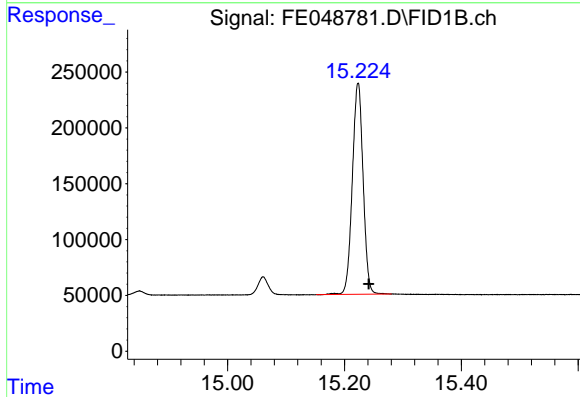
R.T.: 13.369 min  
 Delta R.T.: -0.017 min  
 Response: 1955795  
 Conc: 17.95 ug/ml



#13 n-Docosane (C22)

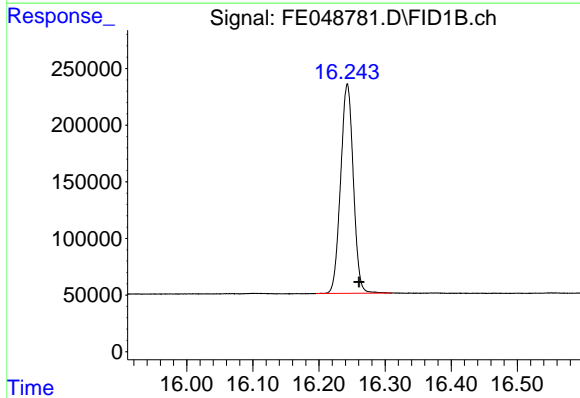
R.T.: 14.122 min  
 Delta R.T.: -0.017 min  
 Response: 2368648  
 Conc: 18.38 ug/ml

Instrument : FID\_E  
 ClientSampleId : 20 PPM ALIPHATIC HC STD



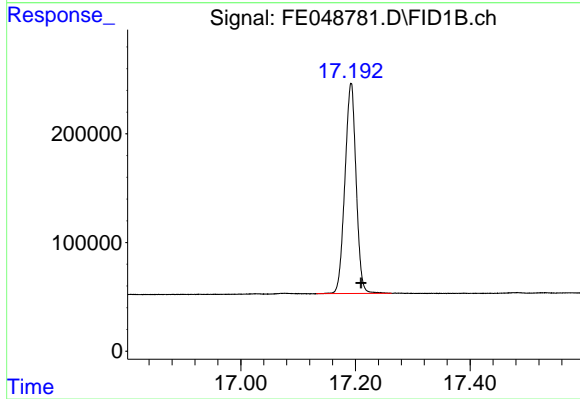
#14 n-Tetracosane (C24)

R.T.: 15.223 min  
 Delta R.T.: -0.018 min  
 Response: 2425788  
 Conc: 18.72 ug/ml



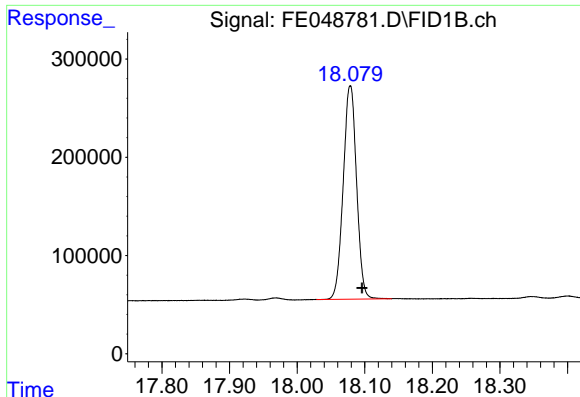
#15 n-Hexacosane (C26)

R.T.: 16.243 min  
 Delta R.T.: -0.018 min  
 Response: 2467903  
 Conc: 19.04 ug/ml



#16 n-Octacosane (C28)

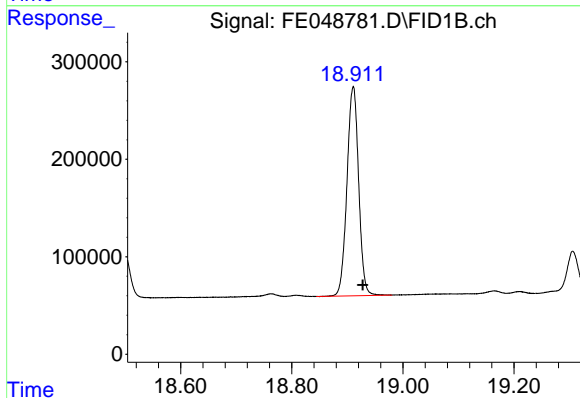
R.T.: 17.193 min  
 Delta R.T.: -0.018 min  
 Response: 2623745  
 Conc: 20.30 ug/ml



#17 n-Tricontane (C30)

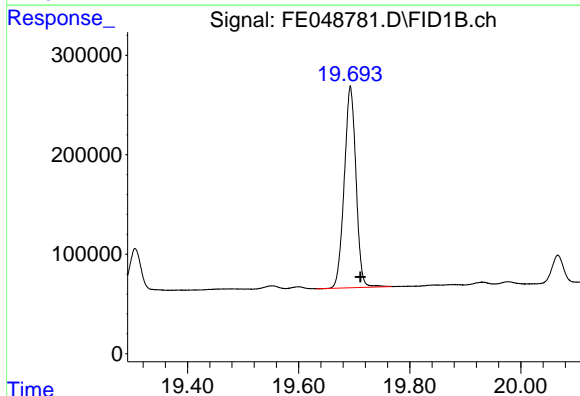
R.T.: 18.079 min  
 Delta R.T.: -0.018 min  
 Response: 2979406  
 Conc: 22.24 ug/ml

Instrument :  
 FID\_E  
 ClientSampleId :  
 20 PPM ALIPHATIC HC STD



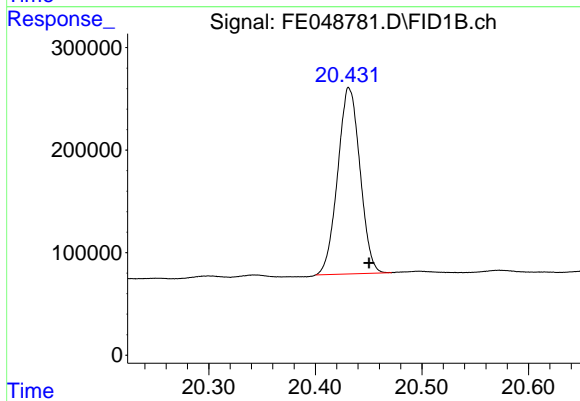
#18 n-Dotriacontane (C32)

R.T.: 18.911 min  
 Delta R.T.: -0.017 min  
 Response: 3127150  
 Conc: 23.04 ug/ml



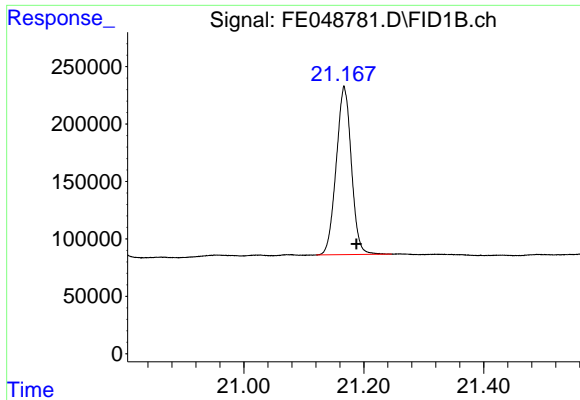
#19 n-Tetratriacontane (C34)

R.T.: 19.693 min  
 Delta R.T.: -0.018 min  
 Response: 2961042  
 Conc: 21.64 ug/ml



#20 n-Hexatriacontane (C36)

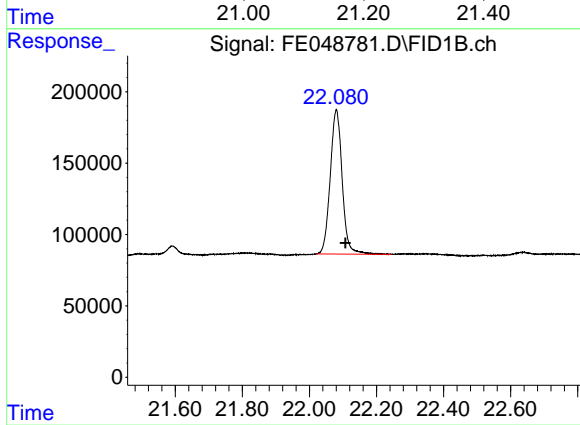
R.T.: 20.432 min  
 Delta R.T.: -0.019 min  
 Response: 2640920  
 Conc: 19.43 ug/ml



#21 n-Octatriacontane (C38)

R.T.: 21.167 min  
Delta R.T.: -0.020 min  
Response: 2566097  
Conc: 18.82 ug/ml

Instrument :  
FID\_E  
ClientSampleId :  
20 PPM ALIPHATIC HC STD



#22 n-Tetracontane (C40)

R.T.: 22.080 min  
Delta R.T.: -0.027 min  
Response: 2502102  
Conc: 18.27 ug/ml