

Data Path : Z:\pestpcbsrv\HPCHEM1\FID\_E\Data\FE061924AL\  
 Data File : FE048790.D  
 Signal(s) : FID1B.ch  
 Acq On : 19 Jun 2024 17:10  
 Operator : YP\AJ  
 Sample : P2940-01  
 Misc :  
 ALS Vial : 15 Sample Multiplier: 1

Instrument :  
 FID\_E  
 ClientSampleId :  
 SU-03-061824

Integration File: autoint1.e  
 Quant Time: Jun 20 01:22:08 2024  
 Quant Method : Z:\pestpcbsrv\HPCHEM1\FID\_E\methods\Aliphatic EPH 052524.M  
 Quant Title : GC Extractables  
 QLast Update : Fri May 24 16:28:51 2024  
 Response via : Initial Calibration  
 Integrator: ChemStation

Volume Inj. : 1 ul  
 Signal Phase : Rxi-1ms  
 Signal Info : 20M x 0.18mm x 0.18um

Compound	R.T.	Response	Conc Units
-----			
System Monitoring Compounds			
9) S ortho-Terphenyl (SURR)	11.936	5580090	38.860 ug/ml
Spiked Amount	50.000	Recovery	= 77.72%
12) S 1-chlorooctadecane (S...	13.372	9849392	90.410 ug/ml
Spiked Amount	50.000	Recovery	= 180.82%

Target Compounds

-----

(f)=RT Delta > 1/2 Window

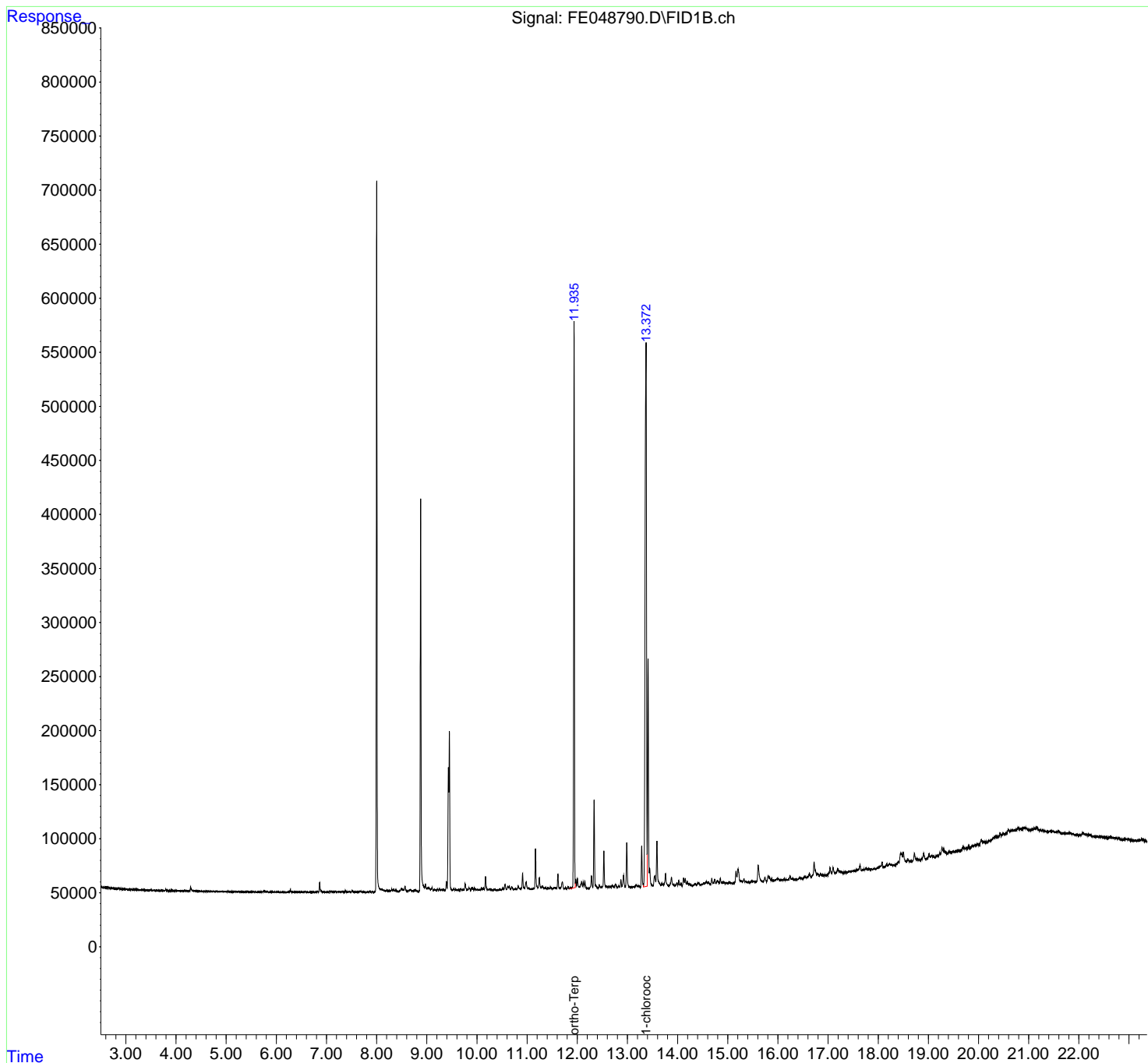
(m)=manual int.

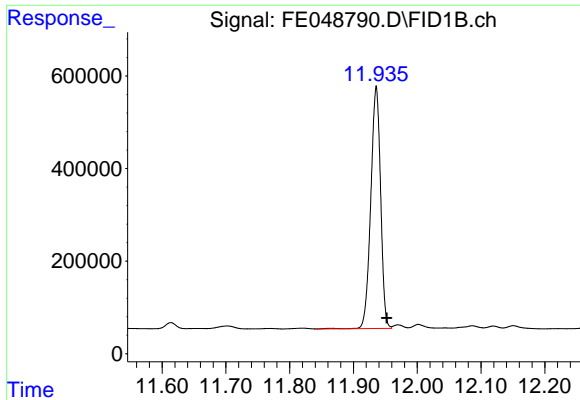
Data Path : Z:\pestpcbsrv\HPCHEM1\FID\_E\Data\FE061924AL\  
Data File : FE048790.D  
Signal(s) : FID1B.ch  
Acq On : 19 Jun 2024 17:10  
Operator : YP\AJ  
Sample : P2940-01  
Misc :  
ALS Vial : 15 Sample Multiplier: 1

Instrument :  
FID\_E  
ClientSampleId :  
SU-03-061824

Integration File: autoint1.e  
Quant Time: Jun 20 01:22:08 2024  
Quant Method : Z:\pestpcbsrv\HPCHEM1\FID\_E\methods\Aliphatic EPH 052524.M  
Quant Title : GC Extractables  
QLast Update : Fri May 24 16:28:51 2024  
Response via : Initial Calibration  
Integrator: ChemStation

Volume Inj. : 1 ul  
Signal Phase : Rxi-1ms  
Signal Info : 20M x 0.18mm x 0.18um

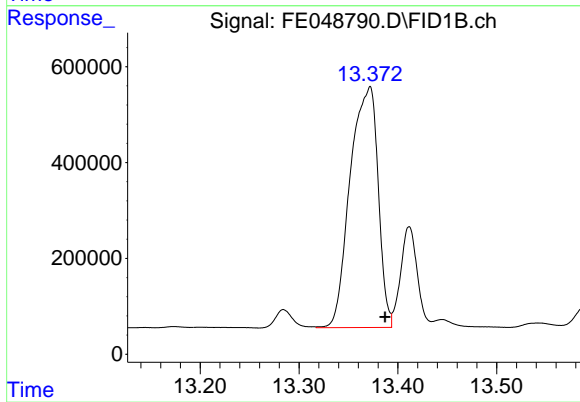




#9 ortho-Terphenyl (SURR)

R.T.: 11.936 min  
Delta R.T.: -0.016 min  
Response: 5580090  
Conc: 38.86 ug/ml

Instrument :  
FID\_E  
ClientSampleId :  
SU-03-061824



#12 1-chlorooctadecane (SURR)

R.T.: 13.372 min  
Delta R.T.: -0.015 min  
Response: 9849392  
Conc: 90.41 ug/ml