

Data Path : Z:\pestpcbsrv\HPCHEM1\FID_E\Data\FE061924AL\
 Data File : FE048797.D
 Signal(s) : FID1B.ch
 Acq On : 19 Jun 2024 20:43
 Operator : YP\AJ
 Sample : P2955-03
 Misc :
 ALS Vial : 22 Sample Multiplier: 1

Instrument :
 FID_E
 ClientSampleId :
 VK-1-EPH

Integration File: autoint1.e
 Quant Time: Jun 20 01:24:03 2024
 Quant Method : Z:\pestpcbsrv\HPCHEM1\FID_E\methods\Aliphatic EPH 052524.M
 Quant Title : GC Extractables
 QLast Update : Fri May 24 16:28:51 2024
 Response via : Initial Calibration
 Integrator: ChemStation

Volume Inj. : 1 ul
 Signal Phase : Rxi-1ms
 Signal Info : 20M x 0.18mm x 0.18um

Compound	R.T.	Response	Conc Units

System Monitoring Compounds			
9) S ortho-Terphenyl (SURR)	11.935	4256748	29.644 ug/ml
Spiked Amount	50.000	Recovery	= 59.29%
12) S 1-chlorooctadecane (S...	13.370	3507282	32.194 ug/ml
Spiked Amount	50.000	Recovery	= 64.39%

Target Compounds

(f)=RT Delta > 1/2 Window

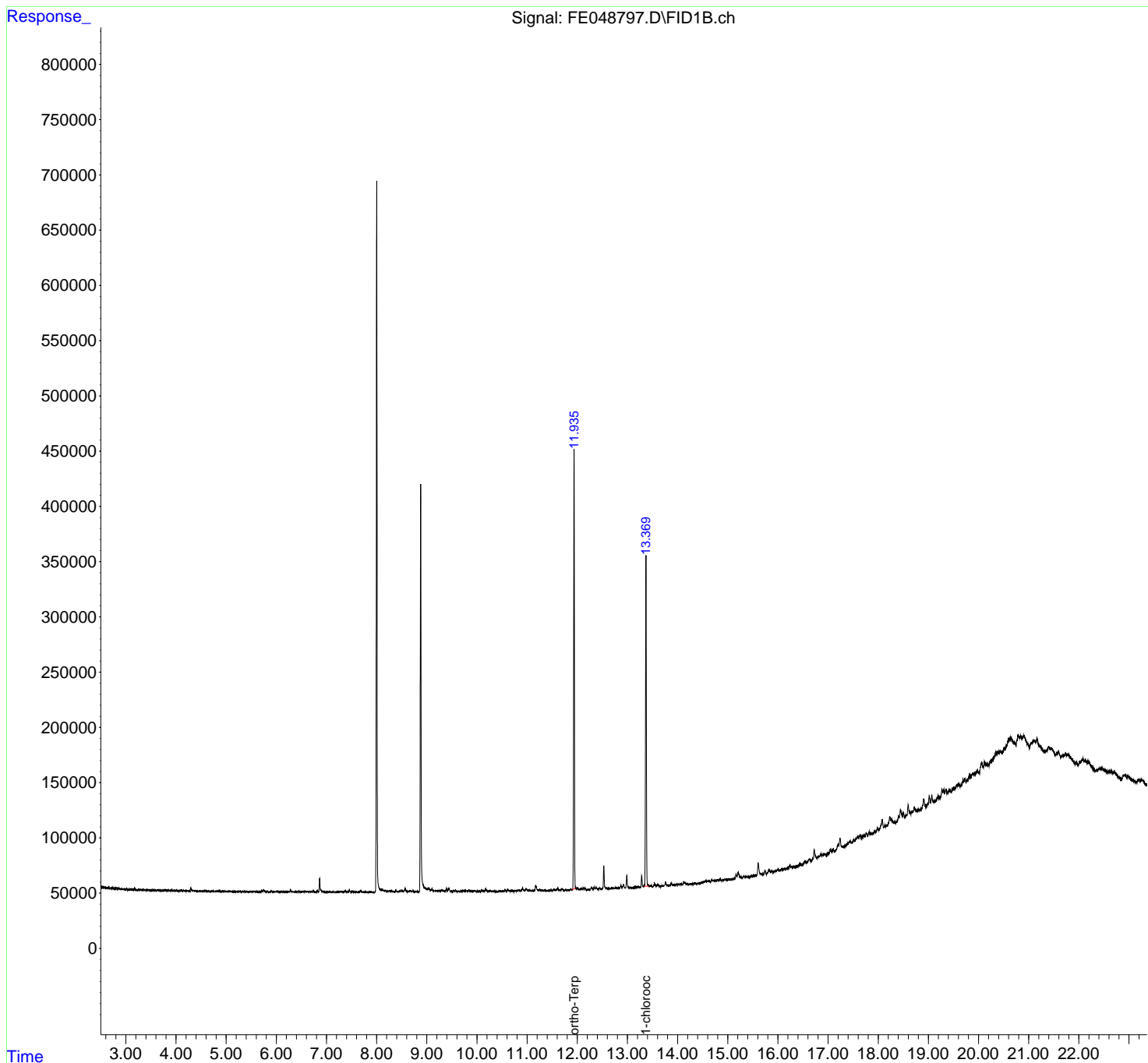
(m)=manual int.

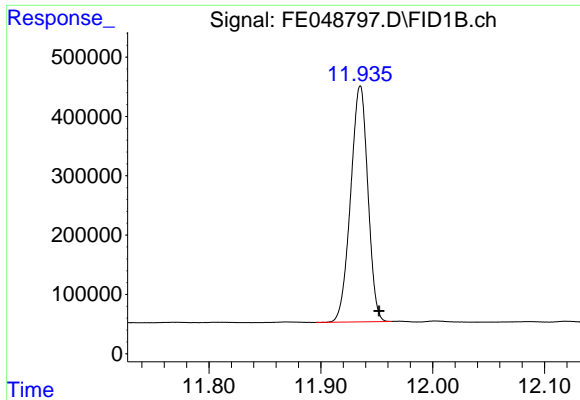
Data Path : Z:\pestpcbsrv\HPCHEM1\FID_E\Data\FE061924AL\
 Data File : FE048797.D
 Signal(s) : FID1B.ch
 Acq On : 19 Jun 2024 20:43
 Operator : YP\AJ
 Sample : P2955-03
 Misc :
 ALS Vial : 22 Sample Multiplier: 1

Instrument :
 FID_E
 ClientSampleId :
 VK-1-EPH

Integration File: autoint1.e
 Quant Time: Jun 20 01:24:03 2024
 Quant Method : Z:\pestpcbsrv\HPCHEM1\FID_E\methods\Aliphatic EPH 052524.M
 Quant Title : GC Extractables
 QLast Update : Fri May 24 16:28:51 2024
 Response via : Initial Calibration
 Integrator: ChemStation

Volume Inj. : 1 ul
 Signal Phase : Rxi-1ms
 Signal Info : 20M x 0.18mm x 0.18um

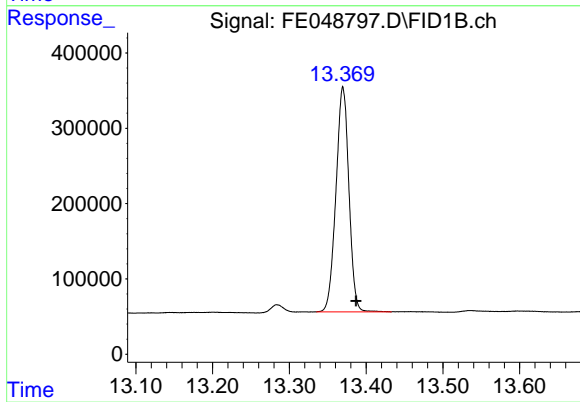




#9 ortho-Terphenyl (SURR)

R.T.: 11.935 min
Delta R.T.: -0.017 min
Response: 4256748
Conc: 29.64 ug/ml

Instrument :
FID_E
ClientSampleId :
VK-1-EPH



#12 1-chlorooctadecane (SURR)

R.T.: 13.370 min
Delta R.T.: -0.017 min
Response: 3507282
Conc: 32.19 ug/ml