

Data Path : Z:\pestpcbsrv\HPCHEM1\FID\_E\Data\FE061925AL\  
 Data File : FE054500.D  
 Signal(s) : FID1B.ch  
 Acq On : 19 Jun 2025 17:27  
 Operator : YP\AJ  
 Sample : Q2355-01 10X  
 Misc :  
 ALS Vial : 8 Sample Multiplier: 1

**Instrument :**  
 FID\_E  
**ClientSampleId :**  
 3897

**Manual Integrations**  
**APPROVED**

Reviewed By :Yogesh Patel 06/20/2025  
 Supervised By :mohammad ahmed 06/23/2025

Integration File: autoint1.e  
 Quant Time: Jun 20 02:13:16 2025  
 Quant Method : Z:\pestpcbsrv\HPCHEM1\FID\_E\methods\Aliphatic EPH 061025.M  
 Quant Title : GC Extractables  
 QLast Update : Tue Jun 10 07:24:04 2025  
 Response via : Initial Calibration  
 Integrator: ChemStation

Volume Inj. : 1 ul  
 Signal Phase : Rxi-1ms  
 Signal Info : 20M x 0.18mm x 0.18um

Compound	R.T.	Response	Conc Units
-----			
System Monitoring Compounds			
9) S ortho-Terphenyl (SURR)	11.824	657153	3.977 ug/mlm
Spiked Amount	50.000	Recovery =	7.95%
12) S 1-chlorooctadecane (S...	13.270	637353	5.226 ug/mlm
Spiked Amount	50.000	Recovery =	10.45%

Target Compounds

(f)=RT Delta > 1/2 Window

(m)=manual int.

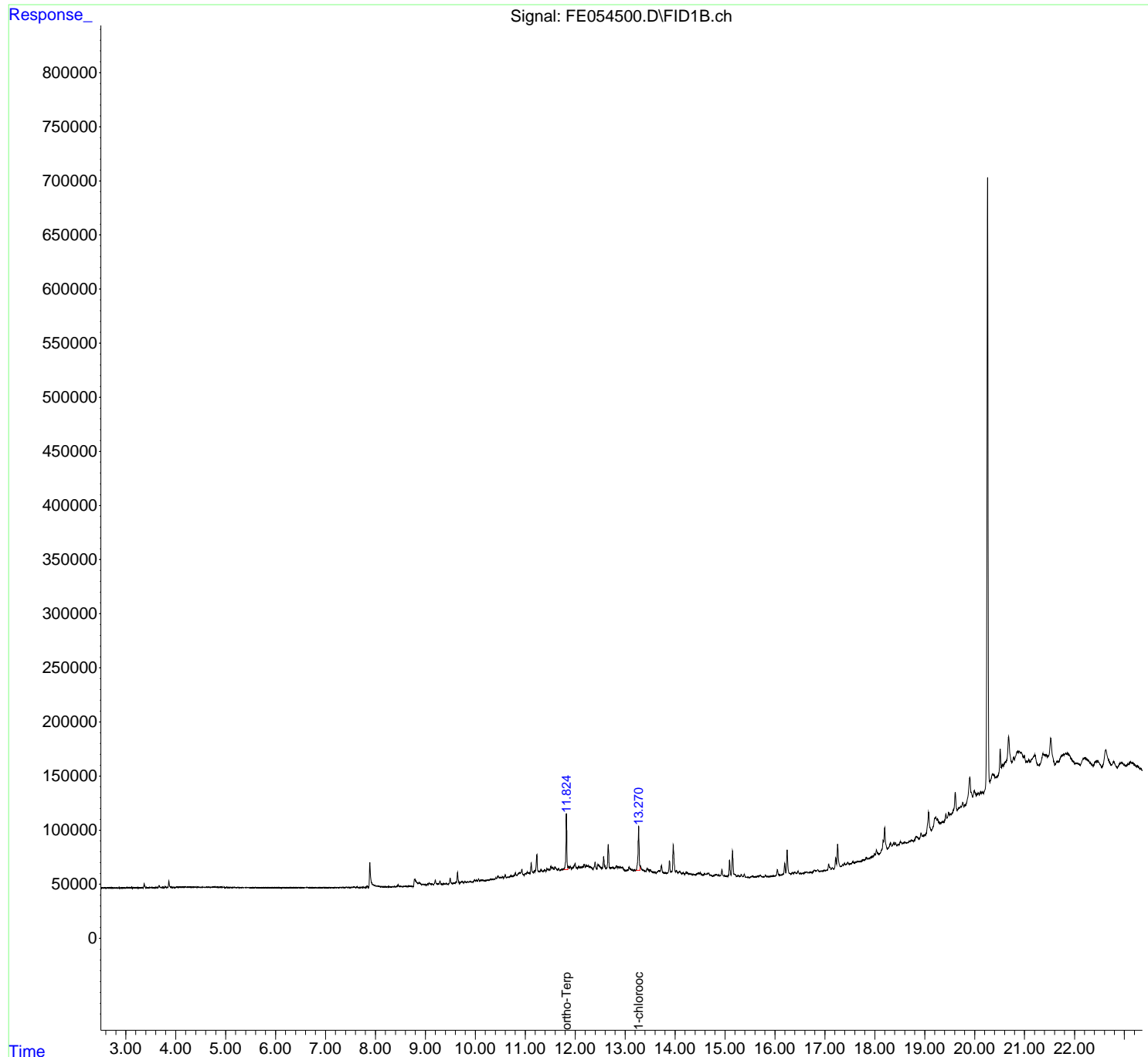
Data Path : Z:\pestpcbsrv\HPCHEM1\FID\_E\Data\FE061925AL\  
 Data File : FE054500.D  
 Signal(s) : FID1B.ch  
 Acq On : 19 Jun 2025 17:27  
 Operator : YP\AJ  
 Sample : Q2355-01 10X  
 Misc :  
 ALS Vial : 8 Sample Multiplier: 1

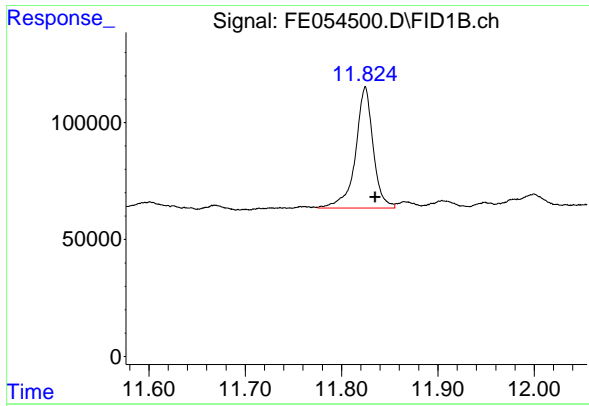
**Instrument :**  
 FID\_E  
**ClientSampleId :**  
 3897

**Manual Integrations**  
**APPROVED**  
 Reviewed By :Yogesh Patel 06/20/2025  
 Supervised By :mohammad ahmed 06/23/2025

Integration File: autoint1.e  
 Quant Time: Jun 20 02:13:16 2025  
 Quant Method : Z:\pestpcbsrv\HPCHEM1\FID\_E\methods\Aliphatic EPH 061025.  
 Quant Title : GC Extractables  
 QLast Update : Tue Jun 10 07:24:04 2025  
 Response via : Initial Calibration  
 Integrator: ChemStation

Volume Inj. : 1 ul  
 Signal Phase : Rxi-1ms  
 Signal Info : 20M x 0.18mm x 0.18um





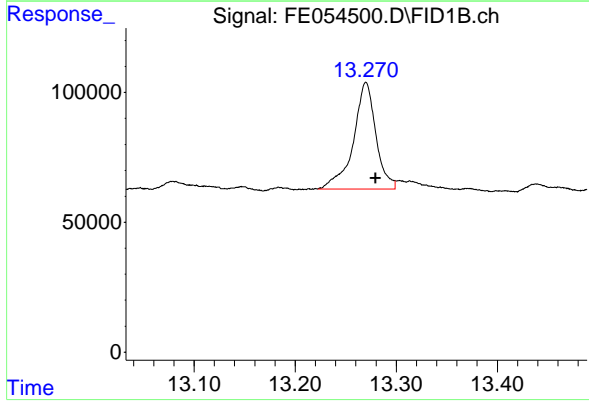
#9 ortho-Terphenyl (SURR)

R.T.: 11.824 min  
Delta R.T.: -0.011 min  
Response: 657153  
Conc: 3.98 ug/ml

Instrument :  
FID\_E  
ClientSampleId :  
3897

Manual Integrations  
APPROVED

Reviewed By :Yogesh Patel 06/20/2025  
Supervised By :mohammad ahmed 06/23/2025



#12 1-chlorooctadecane (SURR)

R.T.: 13.270 min  
Delta R.T.: -0.010 min  
Response: 637353  
Conc: 5.23 ug/ml m