

Data Path : Z:\pestpcbsrv\HPCHEM1\FID E\Data\FE062218AL\
 Data File : FE027867.D
 Signal(s) : FID1B.CH
 Acq On : 22 Jun 2018 23:39
 Operator : UA/AJ
 Sample : J3622-13
 Misc :
 ALS Vial : 16 Sample Multiplier: 1

Integration File: autoint1.e
 Quant Time: Jun 23 04:12:53 2018
 Quant Method : Z:\pestpcbsrv\HPCHEM1\FID_E\methods\Alaphatic EPH 062218.M
 Quant Title : GC Extractables
 QLast Update : Fri Jun 22 14:14:03 2018
 Response via : Initial Calibration
 Integrator: ChemStation 6890 Scale Mode: Large solvent peaks clipped

Volume Inj. : 1 ul
 Signal Phase : Rxi-lms
 Signal Info : 20M x 0.18mm x 0.18um

Compound	R.T.	Response	Conc Units

System Monitoring Compounds			
9) S ortho-Terphenyl (SURR)	12.180	7958454	40.725 ug/ml
Spiked Amount	50.000	Recovery	= 81.45%
12) S 1-chlorooctadecane (S...	13.638	6191500	37.384 ug/ml
Spiked Amount	50.000	Recovery	= 74.77%
Target Compounds			
7) T n-Hexadecane (C16)	10.349	99524	0.564 ug/ml
18) T n-Dotriacontane (C32)	19.457	46951	0.269 ug/ml

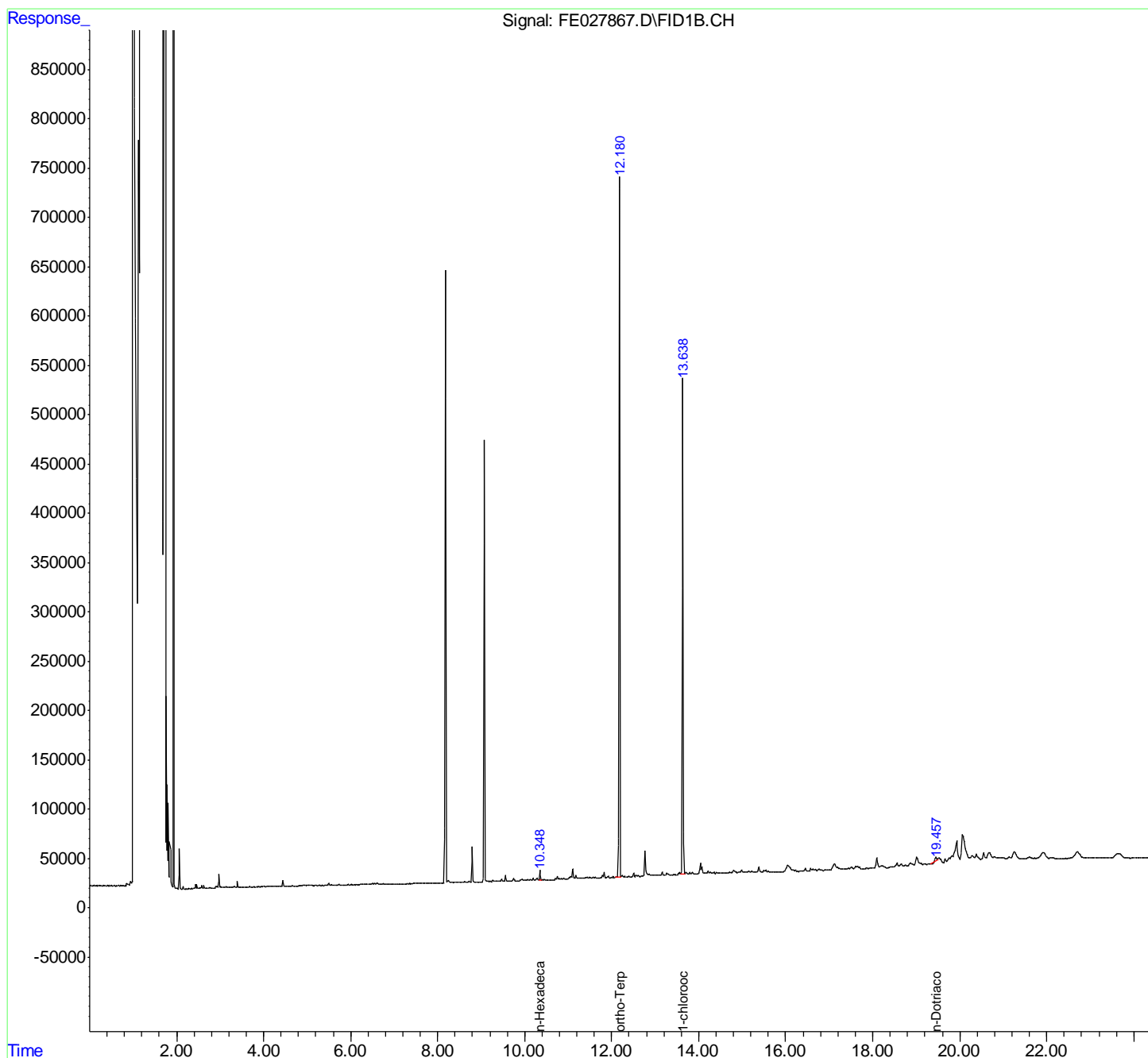
(f)=RT Delta > 1/2 Window

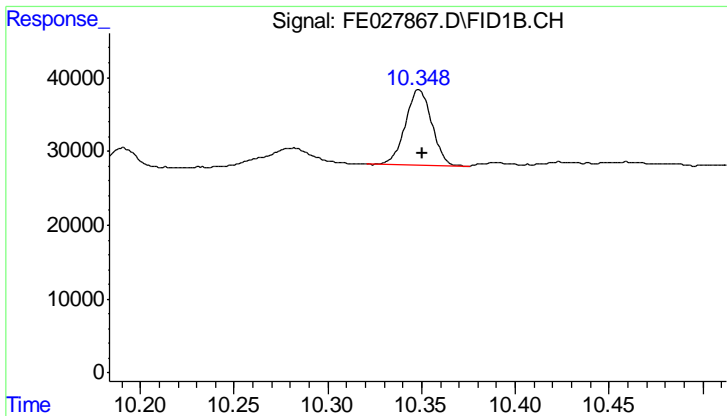
(m)=manual int.

Data Path : Z:\pestpcbsrv\HPCHEM1\FID E\Data\FE062218AL\
 Data File : FE027867.D
 Signal(s) : FID1B.CH
 Acq On : 22 Jun 2018 23:39
 Operator : UA/AJ
 Sample : J3622-13
 Misc :
 ALS Vial : 16 Sample Multiplier: 1

Integration File: autoint1.e
 Quant Time: Jun 23 04:12:53 2018
 Quant Method : Z:\pestpcbsrv\HPCHEM1\FID_E\methods\Alaphatic EPH 062218.M
 Quant Title : GC Extractables
 QLast Update : Fri Jun 22 14:14:03 2018
 Response via : Initial Calibration
 Integrator: ChemStation 6890 Scale Mode: Large solvent peaks clipped

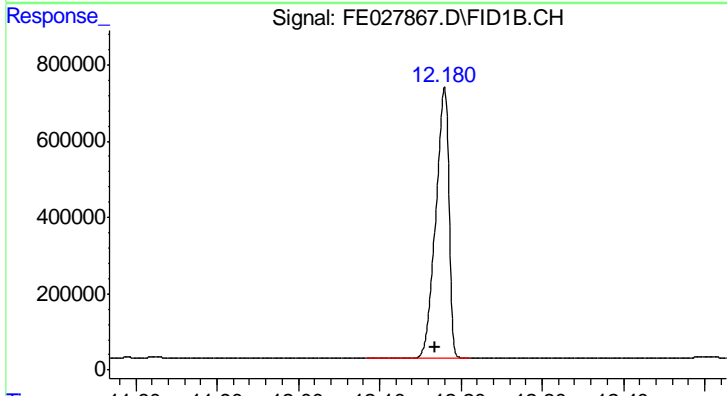
Volume Inj. : 1 ul
 Signal Phase : Rxi-lms
 Signal Info : 20M x 0.18mm x 0.18um





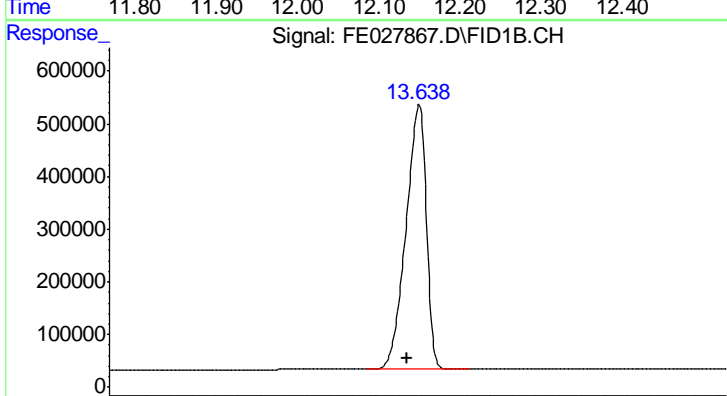
#7 n-Hexadecane (C16)

R.T.: 10.349 min
 Delta R.T.: -0.002 min
 Response: 99524
 Conc: 0.56 ug/ml



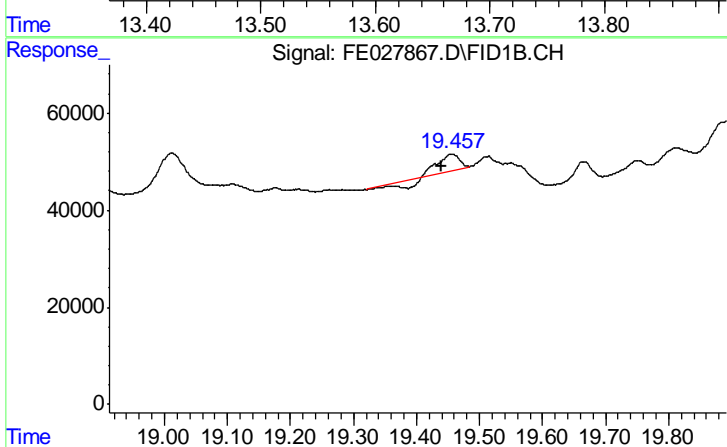
#9 ortho-Terphenyl (SURR)

R.T.: 12.180 min
 Delta R.T.: 0.012 min
 Response: 7958454
 Conc: 40.73 ug/ml



#12 1-chlorooctadecane (SURR)

R.T.: 13.638 min
 Delta R.T.: 0.010 min
 Response: 6191500
 Conc: 37.38 ug/ml



#18 n-Dotriacontane (C32)

R.T.: 19.457 min
 Delta R.T.: 0.018 min
 Response: 46951
 Conc: 0.27 ug/ml