

Data Path : Z:\pestpcbsrv\HPCHEM1\FID\_E\Data\FE062218AL\  
 Data File : FE027867.D  
 Signal(s) : FID1B.CH  
 Acq On : 22 Jun 2018 23:39  
 Operator : UA/AJ  
 Sample : J3622-13  
 Misc :  
 ALS Vial : 16 Sample Multiplier: 1

Integration File: autoint1.e  
 Quant Time: Jun 23 04:44:33 2018  
 Quant Method : Z:\pestpcbsrv\HPCHEM1\FID\_E\methods\Alaphatic EPH 062218.M  
 Quant Title : GC Extractables  
 QLast Update : Fri Jun 22 14:14:03 2018  
 Response via : Initial Calibration  
 Integrator: ChemStation 6890 Scale Mode: Large solvent peaks clipped

Volume Inj. : 1 ul  
 Signal Phase : Rxi-lms  
 Signal Info : 20M x 0.18mm x 0.18um

Compound	R.T.	Response	Conc Units
-----			
System Monitoring Compounds			
9) S ortho-Terphenyl (SURR)	12.180	7958454	40.725 ug/ml
Spiked Amount	50.000	Recovery	= 81.45%
12) S 1-chlorooctadecane (S...	13.638	6191500	37.384 ug/ml
Spiked Amount	50.000	Recovery	= 74.77%

Target Compounds

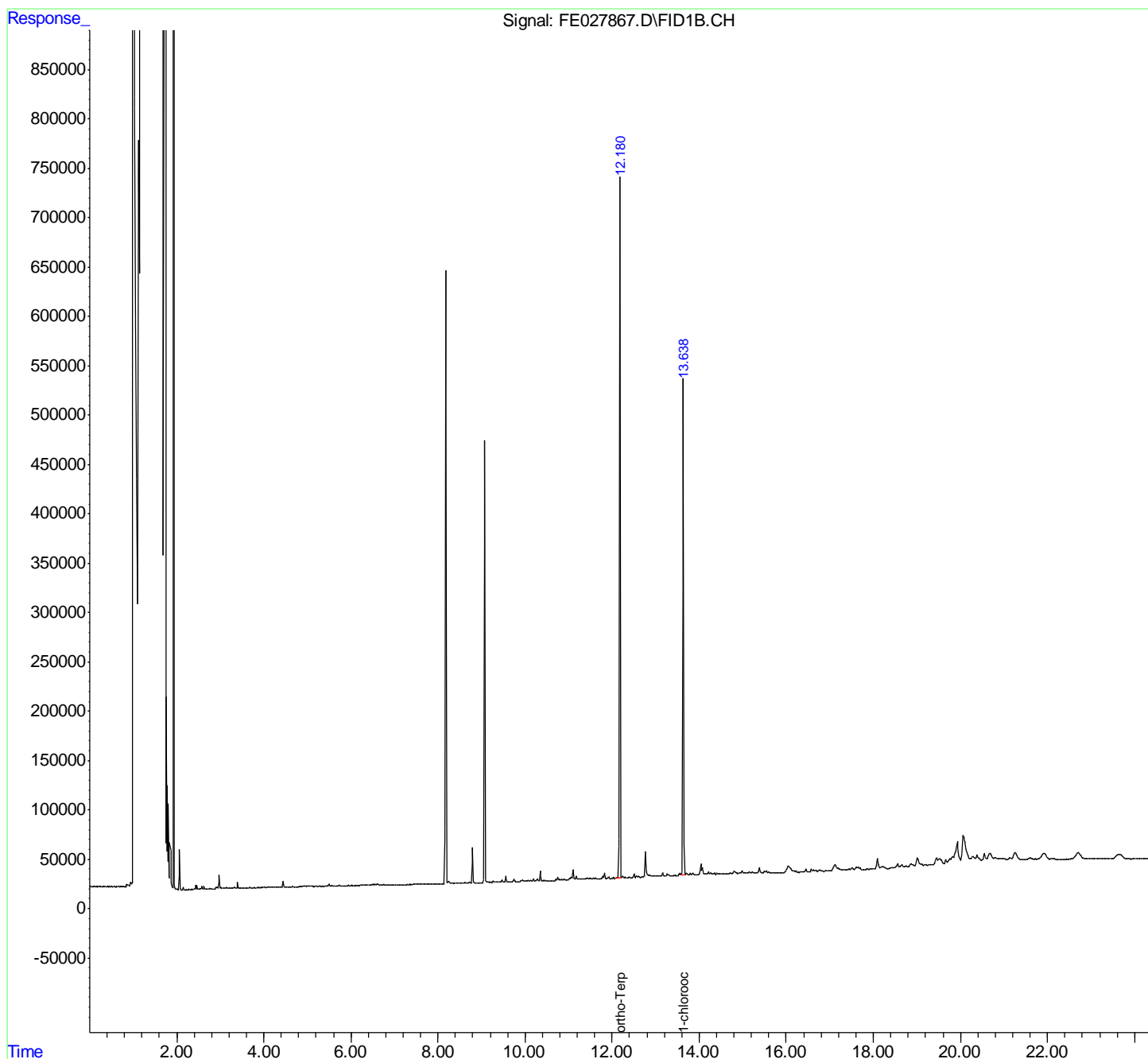
(f)=RT Delta > 1/2 Window

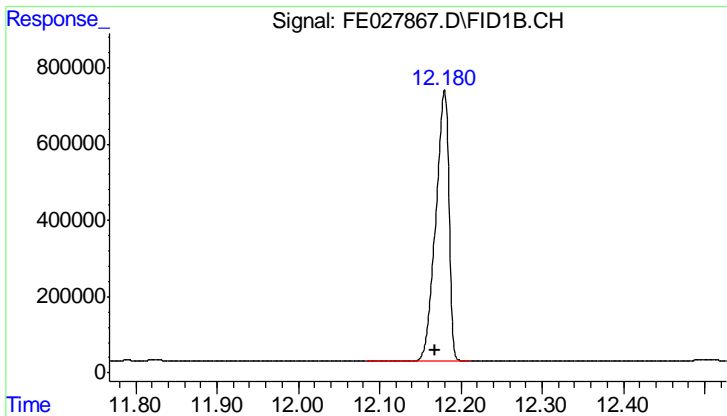
(m)=manual int.

Data Path : Z:\pestpcbsrv\HPCHEM1\FID\_E\Data\FE062218AL\  
 Data File : FE027867.D  
 Signal(s) : FID1B.CH  
 Acq On : 22 Jun 2018 23:39  
 Operator : UA/AJ  
 Sample : J3622-13  
 Misc :  
 ALS Vial : 16 Sample Multiplier: 1

Integration File: autoint1.e  
 Quant Time: Jun 23 04:44:33 2018  
 Quant Method : Z:\pestpcbsrv\HPCHEM1\FID\_E\methods\Alaphatic EPH 062218.M  
 Quant Title : GC Extractables  
 QLast Update : Fri Jun 22 14:14:03 2018  
 Response via : Initial Calibration  
 Integrator: ChemStation 6890 Scale Mode: Large solvent peaks clipped

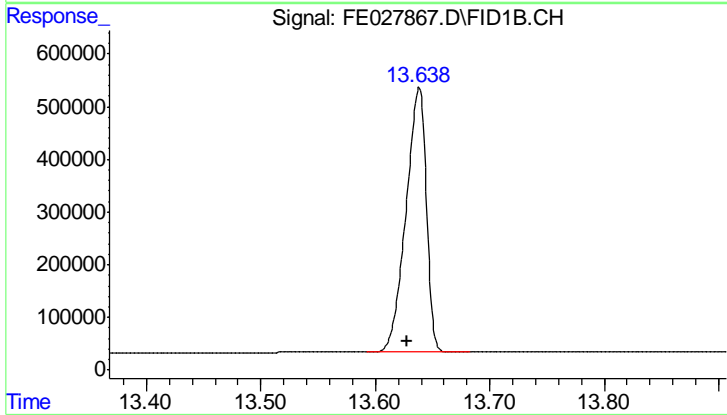
Volume Inj. : 1 ul  
 Signal Phase : Rxi-lms  
 Signal Info : 20M x 0.18mm x 0.18um





#9 ortho-Terphenyl (SURR)

R.T.: 12.180 min  
Delta R.T.: 0.012 min  
Response: 7958454  
Conc: 40.73 ug/ml



#12 1-chlorooctadecane (SURR)

R.T.: 13.638 min  
Delta R.T.: 0.010 min  
Response: 6191500  
Conc: 37.38 ug/ml