

Data Path : Z:\pestpcbsrv\HPCHEM1\FID_E\Data\FE062323AL\
 Data File : FE042850.D
 Signal(s) : FID1B.ch
 Acq On : 23 Jun 2023 19:48
 Operator : YP\AJ
 Sample : 03365-01DL2 100X
 Misc :
 ALS Vial : 12 Sample Multiplier: 1

Instrument :
 FID_E
 ClientSampleId :

Integration File: autoint1.e
 Quant Time: Jun 24 03:59:50 2023
 Quant Method : Z:\pestpcbsrv\HPCHEM1\FID_E\methods\Aliphatic EPH 062123.M
 Quant Title : GC Extractables
 QLast Update : Wed Jun 21 11:03:59 2023
 Response via : Initial Calibration
 Integrator: ChemStation

Volume Inj. : 1 ul
 Signal Phase : Rxi-1ms
 Signal Info : 20M x 0.18mm x 0.18um

Compound	R.T.	Response	Conc Units

System Monitoring Compounds			
9) S ortho-Terphenyl (SURR)	11.917	1263393	6.877 ug/ml
Spiked Amount	50.000	Recovery =	13.75%
12) S 1-chlorooctadecane (S...	13.357	153397	1.127 ug/ml
Spiked Amount	50.000	Recovery =	2.25%
Target Compounds			
8) T n-Octadecane (C18)	11.596	291881	1.756 ug/ml

(f)=RT Delta > 1/2 Window

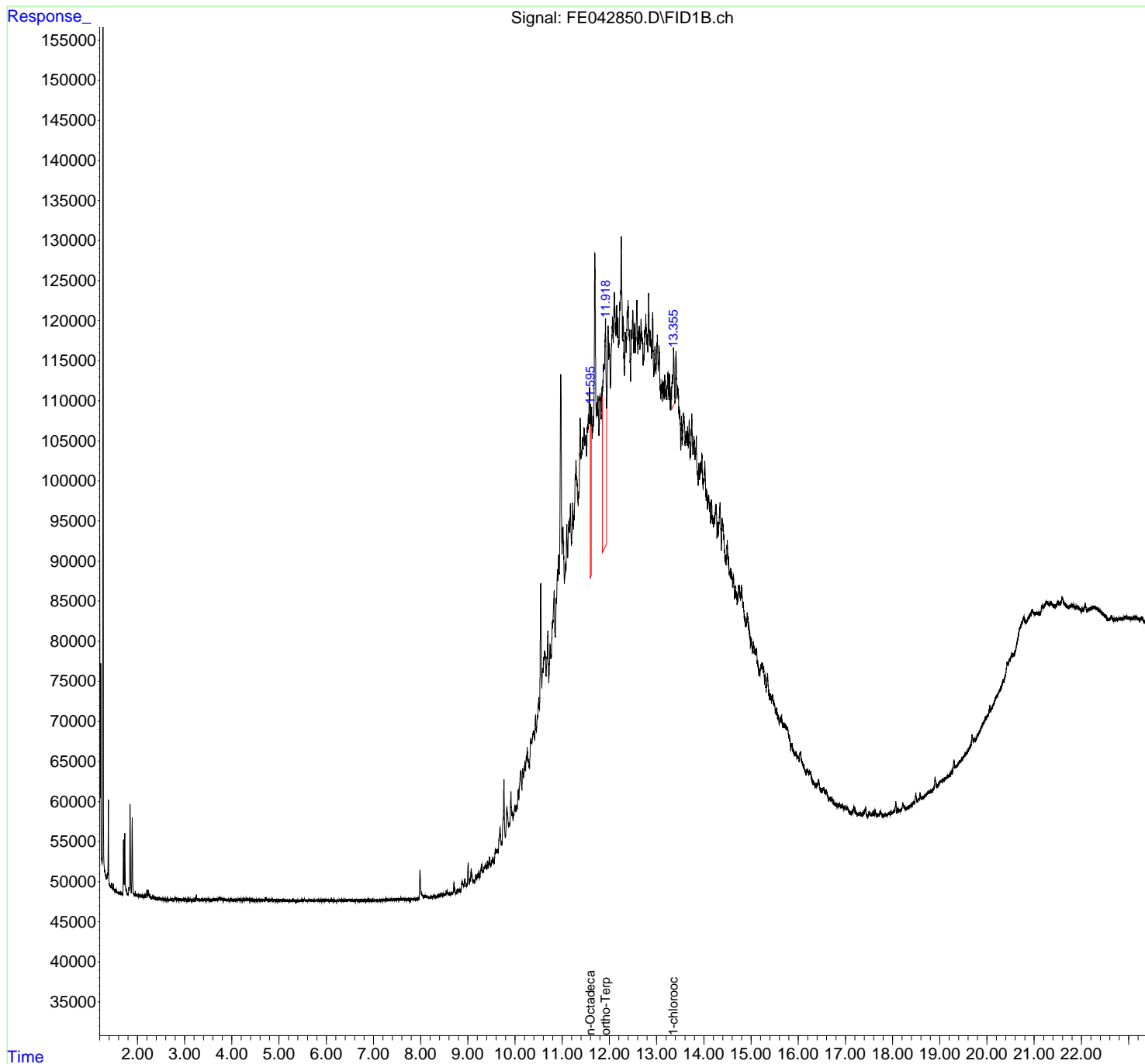
(m)=manual int.

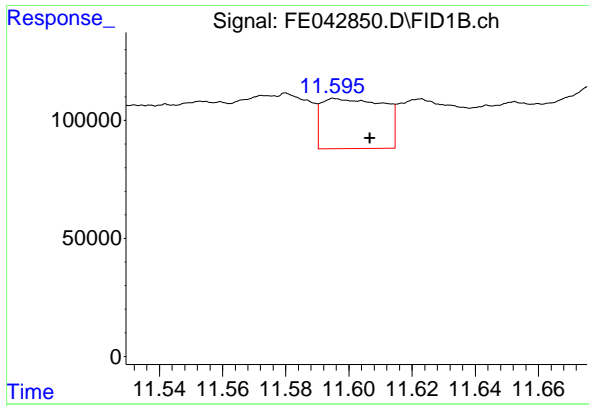
Data Path : Z:\pestpcbsrv\HPCHEM1\FID_E\Data\FE062323AL\
 Data File : FE042850.D
 Signal(s) : FID1B.ch
 Acq On : 23 Jun 2023 19:48
 Operator : YP\AJ
 Sample : 03365-01DL2 100X
 Misc :
 ALS Vial : 12 Sample Multiplier: 1

Instrument :
 FID_E
 ClientSampleId :

Integration File: autoint1.e
 Quant Time: Jun 24 03:59:50 2023
 Quant Method : Z:\pestpcbsrv\HPCHEM1\FID_E\methods\Aliphatic EPH 062123.M
 Quant Title : GC Extractables
 QLast Update : Wed Jun 21 11:03:59 2023
 Response via : Initial Calibration
 Integrator: ChemStation

Volume Inj. : 1 ul
 Signal Phase : Rxi-1ms
 Signal Info : 20M x 0.18mm x 0.18um

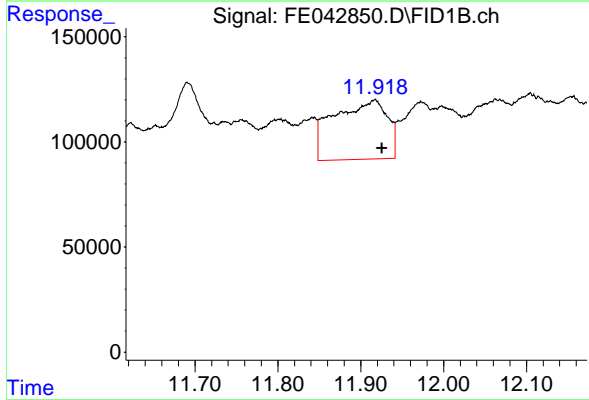




#8 n-Octadecane (C18)

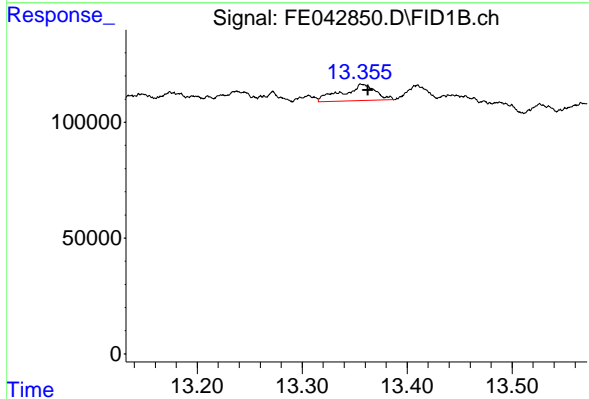
R.T.: 11.596 min
 Delta R.T.: -0.011 min
 Response: 291881
 Conc: 1.76 ug/ml

Instrument :
 FID_E
 ClientSampleId :



#9 ortho-Terphenyl (SURR)

R.T.: 11.917 min
 Delta R.T.: -0.009 min
 Response: 1263393
 Conc: 6.88 ug/ml



#12 1-chlorooctadecane (SURR)

R.T.: 13.357 min
 Delta R.T.: -0.006 min
 Response: 153397
 Conc: 1.13 ug/ml