

Data Path : Z:\pestpcbsrv\HPCHEM1\FID_E\Data\FE062325AL\
 Data File : FE054536.D
 Signal(s) : FID1B.ch
 Acq On : 23 Jun 2025 12:00
 Operator : YP\AJ
 Sample : Q2355-01DL 10X
 Misc :
 ALS Vial : 6 Sample Multiplier: 1

Instrument :
 FID_E
 ClientSampleId :
 3897DL

Integration File: autoint1.e
 Quant Time: Jun 24 03:06:25 2025
 Quant Method : Z:\pestpcbsrv\HPCHEM1\FID_E\methods\Aliphatic EPH 061025.M
 Quant Title : GC Extractables
 QLast Update : Tue Jun 10 07:24:04 2025
 Response via : Initial Calibration
 Integrator: ChemStation

Volume Inj. : 1 ul
 Signal Phase : Rxi-1ms
 Signal Info : 20M x 0.18mm x 0.18um

Compound	R.T.	Response	Conc Units

System Monitoring Compounds			
9) S ortho-Terphenyl (SURR)	11.824	654106	3.959 ug/ml
Spiked Amount	50.000	Recovery =	7.92%
12) S 1-chlorooctadecane (S...	13.270	557540	4.572 ug/ml
Spiked Amount	50.000	Recovery =	9.14%
Target Compounds			
8) T n-Octadecane (C18)	11.512	42122	0.312 ug/ml
10) T n-Eicosane (C20)	12.824	120624	0.902 ug/ml
11) T n-Heneicosane (C21)	13.437	59044	0.444 ug/ml
13) T n-Docosane (C22)	14.025	47383	0.361 ug/ml
14) T n-Tetracosane (C24)	15.150	412508	3.198 ug/ml
15) T n-Hexacosane (C26)	16.195	140569	1.120 ug/ml
17) T n-Tricontane (C30)	18.034	89772	0.724 ug/ml
18) T n-Dotriacontane (C32)	18.833	29946	0.238 ug/ml
19) T n-Tetratriacontane (C34)	19.616	127531	1.025 ug/ml

(f)=RT Delta > 1/2 Window

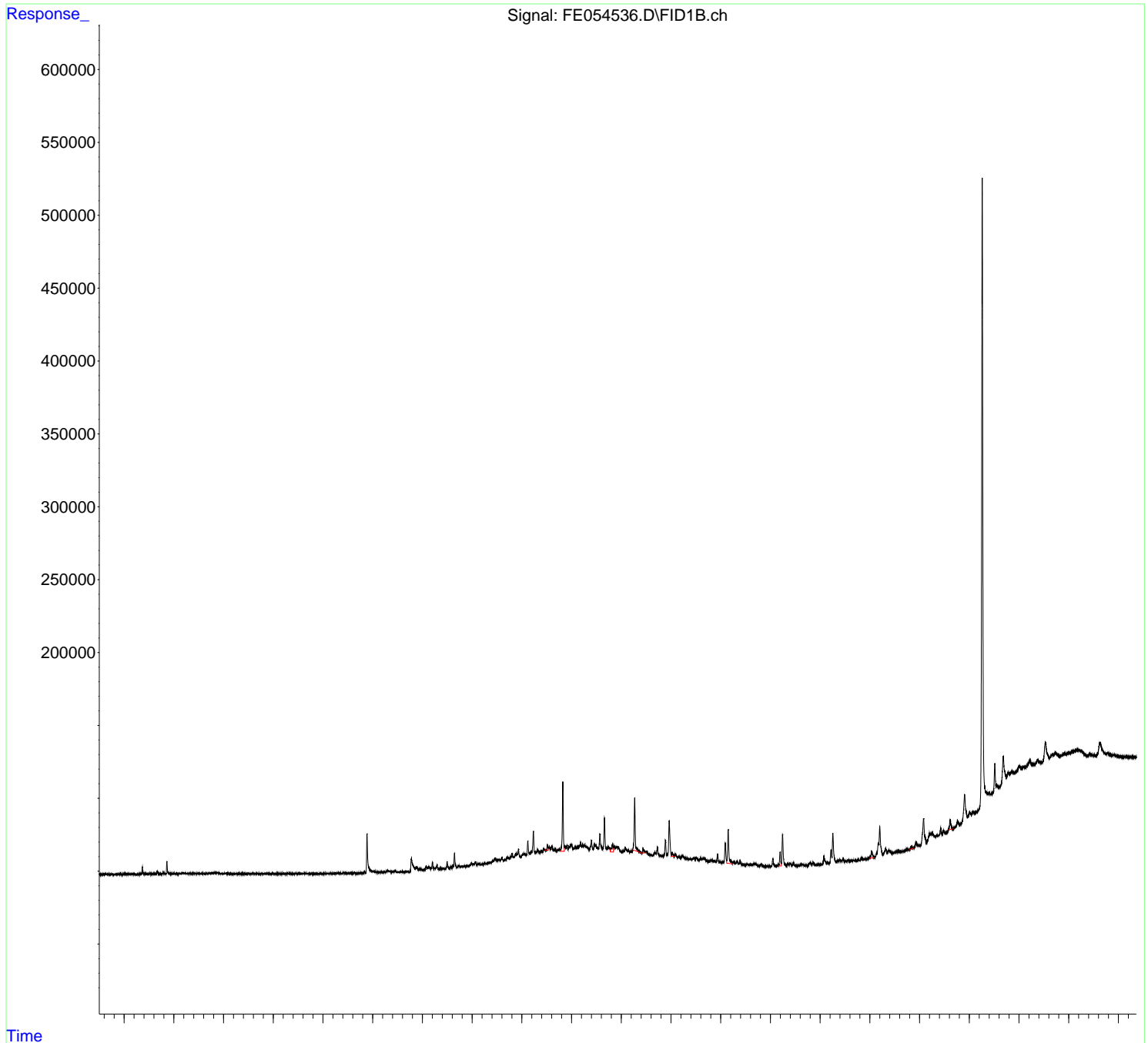
(m)=manual int.

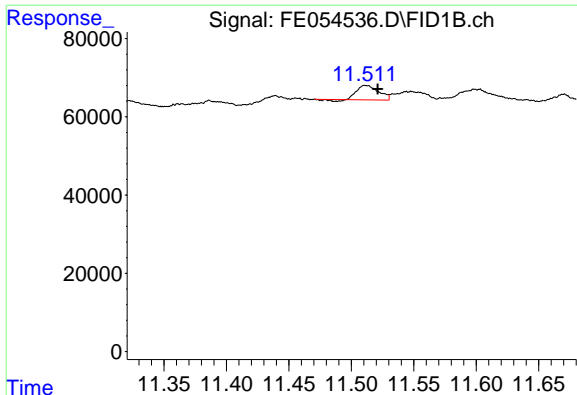
Data Path : Z:\pestpcbsrv\HPCHEM1\FID_E\Data\FE062325AL\
Data File : FE054536.D
Signal(s) : FID1B.ch
Acq On : 23 Jun 2025 12:00
Operator : YP\AJ
Sample : Q2355-01DL 10X
Misc :
ALS Vial : 6 Sample Multiplier: 1

Instrument :
FID_E
ClientSampleId :
3897DL

Integration File: autoint1.e
Quant Time: Jun 24 03:06:25 2025
Quant Method : Z:\pestpcbsrv\HPCHEM1\FID_E\methods\Aliphatic EPH 061025.M
Quant Title : GC Extractables
QLast Update : Tue Jun 10 07:24:04 2025
Response via : Initial Calibration
Integrator: ChemStation

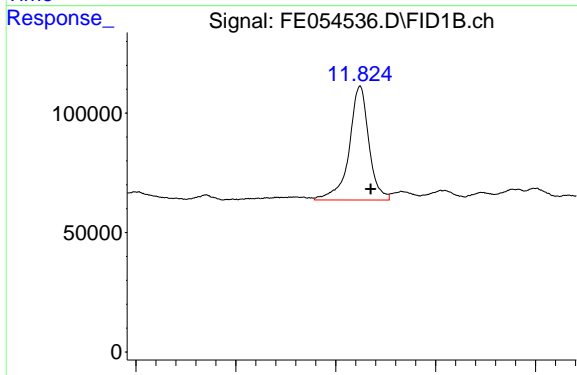
Volume Inj. : 1 u1
Signal Phase : Rxi-1ms
Signal Info : 20M x 0.18mm x 0.18um



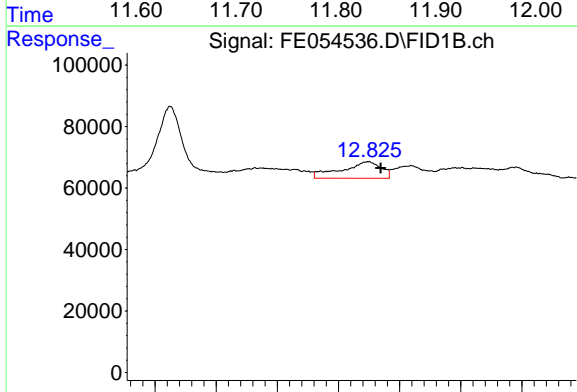


#8 n-Octadecane (C18)
 R.T.: 11.512 min
 Delta R.T.: -0.009 min
 Response: 42122
 Conc: 0.31 ug/ml

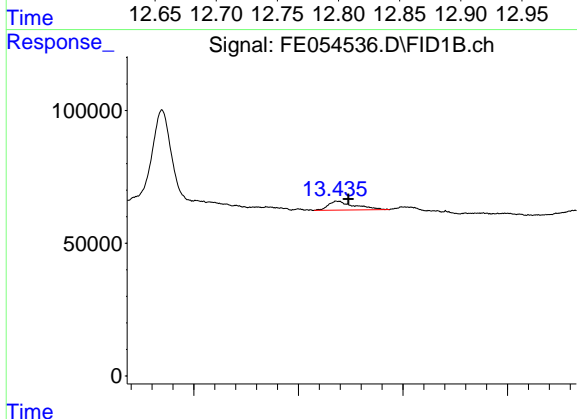
Instrument :
 FID_E
 ClientSampleId :
 3897DL



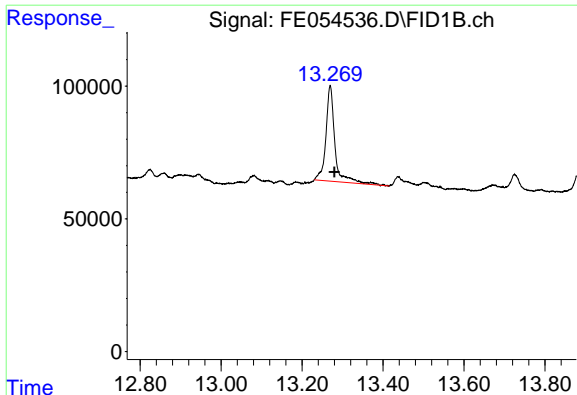
#9 ortho-Terphenyl (SURR)
 R.T.: 11.824 min
 Delta R.T.: -0.011 min
 Response: 654106
 Conc: 3.96 ug/ml



#10 n-Eicosane (C20)
 R.T.: 12.824 min
 Delta R.T.: -0.011 min
 Response: 120624
 Conc: 0.90 ug/ml



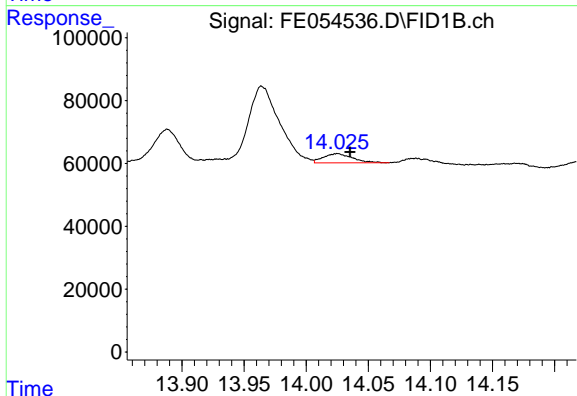
#11 n-Heneicosane (C21)
 R.T.: 13.437 min
 Delta R.T.: -0.010 min
 Response: 59044
 Conc: 0.44 ug/ml



#12 1-chlorooctadecane (SURR)

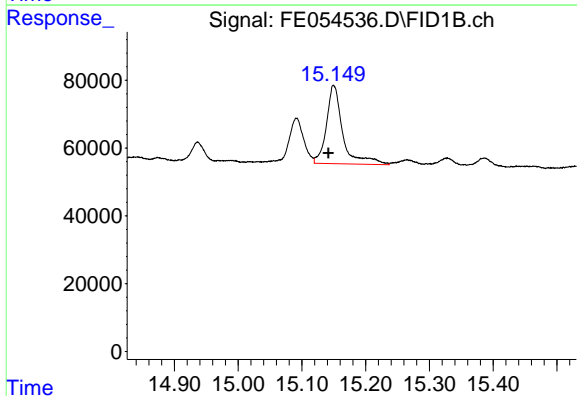
R.T.: 13.270 min
 Delta R.T.: -0.010 min
 Response: 557540
 Conc: 4.57 ug/ml

Instrument :
 FID_E
 ClientSampleId :
 3897DL



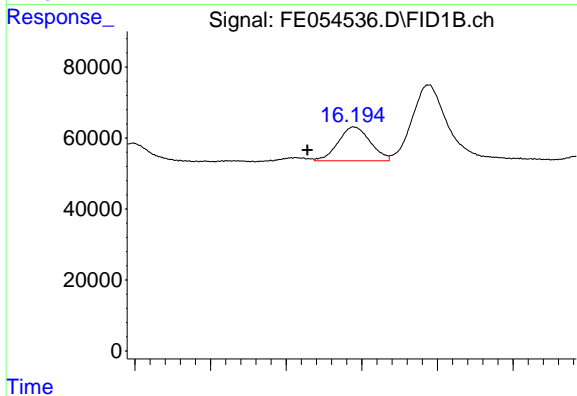
#13 n-Docosane (C22)

R.T.: 14.025 min
 Delta R.T.: -0.011 min
 Response: 47383
 Conc: 0.36 ug/ml



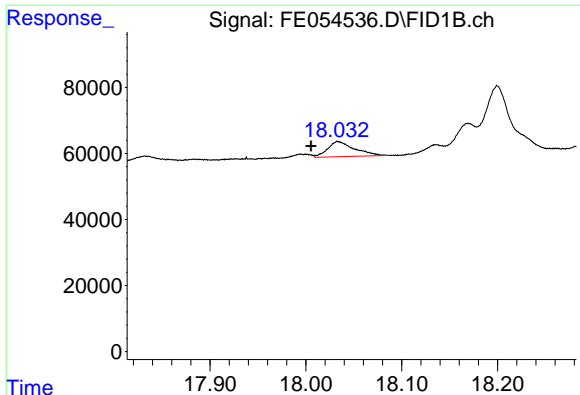
#14 n-Tetracosane (C24)

R.T.: 15.150 min
 Delta R.T.: 0.009 min
 Response: 412508
 Conc: 3.20 ug/ml



#15 n-Hexacosane (C26)

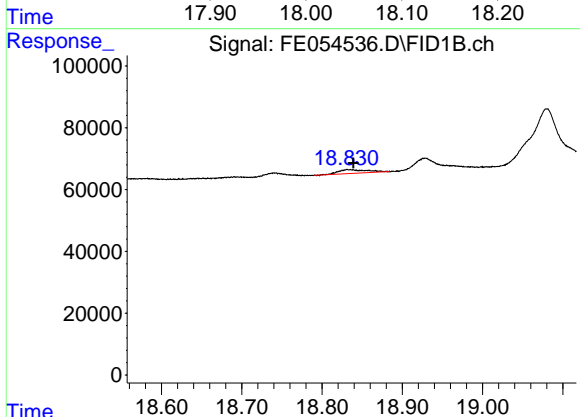
R.T.: 16.195 min
 Delta R.T.: 0.031 min
 Response: 140569
 Conc: 1.12 ug/ml



#17 n-Tricontane (C30)

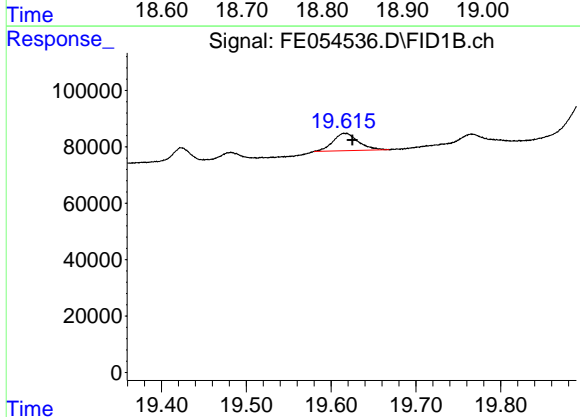
R.T.: 18.034 min
 Delta R.T.: 0.029 min
 Response: 89772
 Conc: 0.72 ug/ml

Instrument :
 FID_E
 ClientSampleId :
 3897DL



#18 n-Dotriacontane (C32)

R.T.: 18.833 min
 Delta R.T.: -0.006 min
 Response: 29946
 Conc: 0.24 ug/ml



#19 n-Tetratriacontane (C34)

R.T.: 19.616 min
 Delta R.T.: -0.009 min
 Response: 127531
 Conc: 1.03 ug/ml