

Data Path : Z:\pestpcbsrv\HPCHEM1\FID_E\Data\FE062524AL\
 Data File : FE048882.D
 Signal(s) : FID1B.ch
 Acq On : 25 Jun 2024 15:25
 Operator : YP\AJ
 Sample : P3047-01
 Misc :
 ALS Vial : 10 Sample Multiplier: 1

Instrument :
 FID_E
 ClientSampleId :

Integration File: autoint1.e
 Quant Time: Jun 26 01:29:37 2024
 Quant Method : Z:\pestpcbsrv\HPCHEM1\FID_E\methods\Aliphatic EPH 062124.M
 Quant Title : GC Extractables
 QLast Update : Thu Jun 20 17:53:58 2024
 Response via : Initial Calibration
 Integrator: ChemStation

Volume Inj. : 1 ul
 Signal Phase : Rxi-1ms
 Signal Info : 20M x 0.18mm x 0.18um

Compound	R.T.	Response	Conc Units

System Monitoring Compounds			
9) S ortho-Terphenyl (SURR)	11.933	5289144	31.632 ug/ml
Spiked Amount	50.000	Recovery	= 63.26%
12) S 1-chlorooctadecane (S...	13.368	5211676	40.529 ug/ml
Spiked Amount	50.000	Recovery	= 81.06%
Target Compounds			
3) T A~Naphthalene (C11.7)	6.277	48891	0.308 ug/ml
5) T A~2-methylnaphthalene...	7.370	68023	0.449 ug/ml
6) T n-Tetradecane (C14)	8.513	64292	0.419 ug/ml
7) T n-Hexadecane (C16)	10.169	95628	0.612 ug/ml
8) T n-Octadecane (C18)	11.610	144232	0.904 ug/ml
10) T n-Eicosane (C20)	12.928	322541	2.080 ug/ml
11) T n-Heneicosane (C21)	13.549	356008	2.338 ug/ml
13) T n-Docosane (C22)	14.120	189309	1.252 ug/ml
14) T n-Tetracosane (C24)	15.201	671665	4.469 ug/ml
15) T n-Hexacosane (C26)	16.242	54814	0.371 ug/ml
16) T n-Octacosane (C28)	17.213	360399	2.499 ug/ml
17) T n-Tricontane (C30)	18.079	423588	2.895 ug/ml
18) T n-Dotriacontane (C32)	18.909	227872	1.594 ug/ml
19) T n-Tetratriacontane (C34)	19.693	158338	1.144 ug/ml
20) T n-Hexatriacontane (C36)	20.438	109974	0.846 ug/ml
21) T n-Octatriacontane (C38)	21.166	144188	1.125 ug/ml
22) T n-Tetracontane (C40)	22.086	223787	1.827 ug/ml

(f)=RT Delta > 1/2 Window

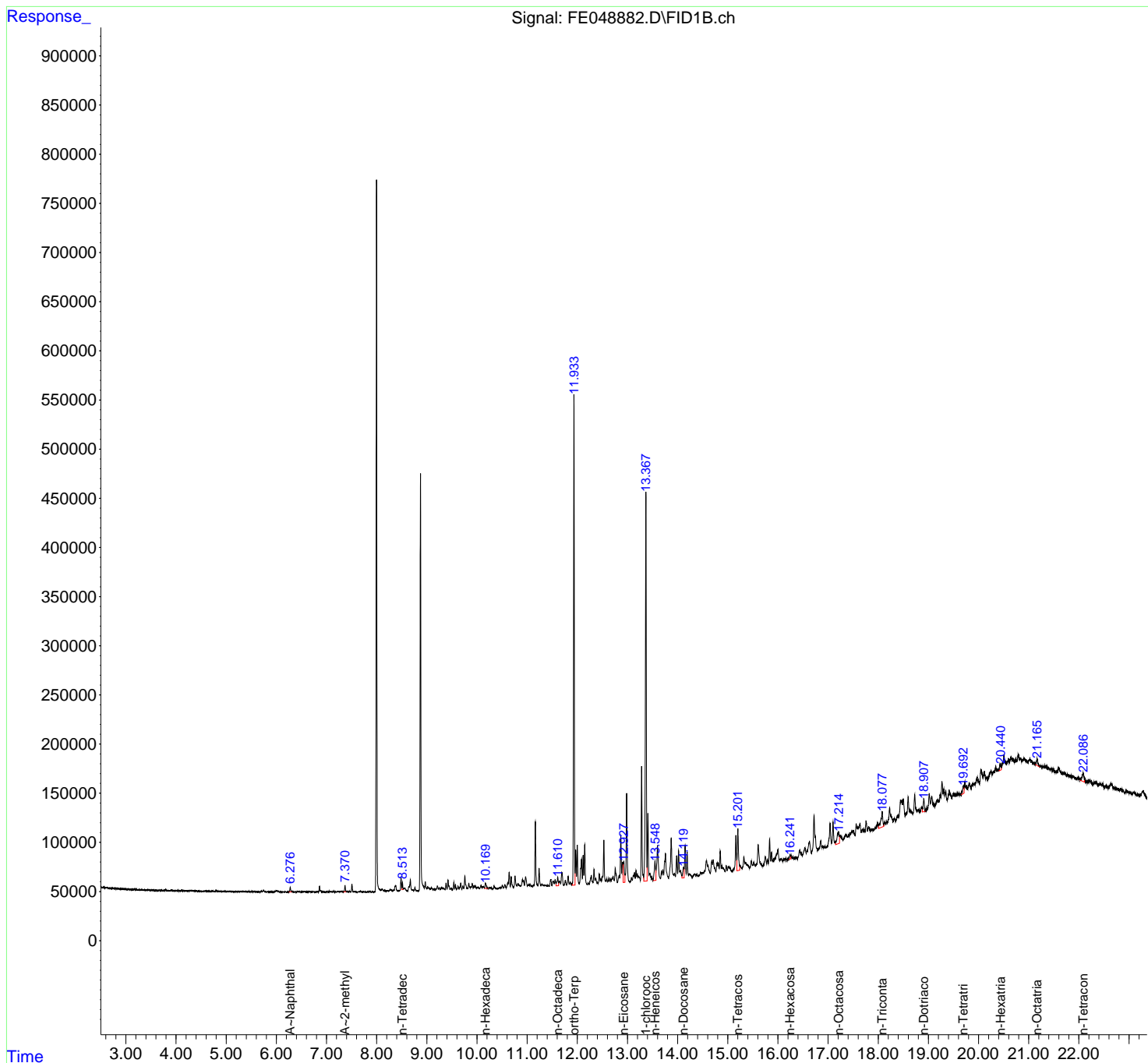
(m)=manual int.

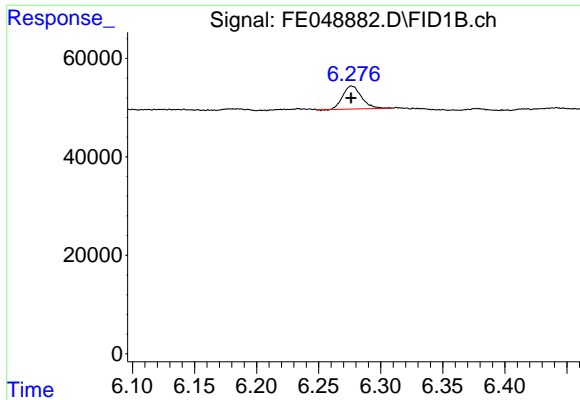
Data Path : Z:\pestpcbsrv\HPCHEM1\FID_E\Data\FE062524AL\
 Data File : FE048882.D
 Signal(s) : FID1B.ch
 Acq On : 25 Jun 2024 15:25
 Operator : YP\AJ
 Sample : P3047-01
 Misc :
 ALS Vial : 10 Sample Multiplier: 1

Instrument :
 FID_E
 ClientSampleId :

Integration File: autoint1.e
 Quant Time: Jun 26 01:29:37 2024
 Quant Method : Z:\pestpcbsrv\HPCHEM1\FID_E\methods\Aliphatic EPH 062124.M
 Quant Title : GC Extractables
 QLast Update : Thu Jun 20 17:53:58 2024
 Response via : Initial Calibration
 Integrator: ChemStation

Volume Inj. : 1 ul
 Signal Phase : Rxi-1ms
 Signal Info : 20M x 0.18mm x 0.18um

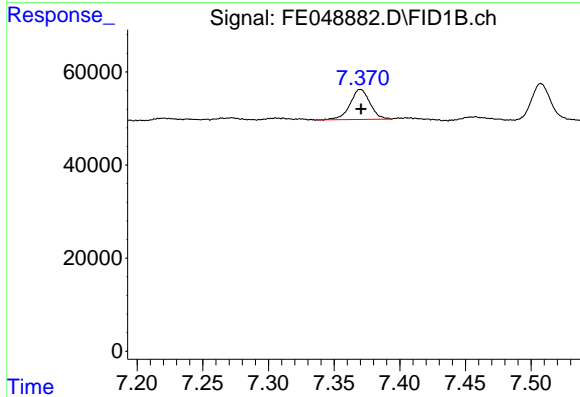




#3 A~Naphthalene (C11.7)

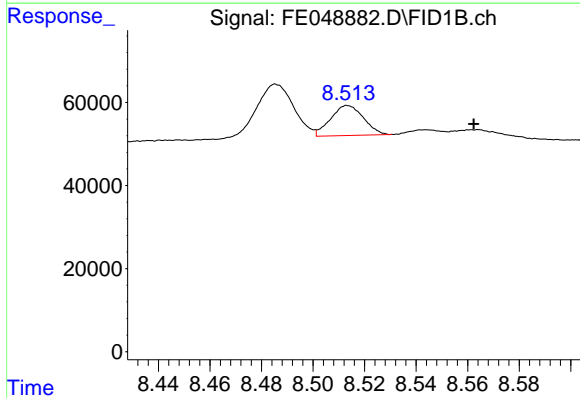
R.T.: 6.277 min
 Delta R.T.: 0.000 min
 Response: 48891
 Conc: 0.31 ug/ml

Instrument :
 FID_E
 ClientSampleId :



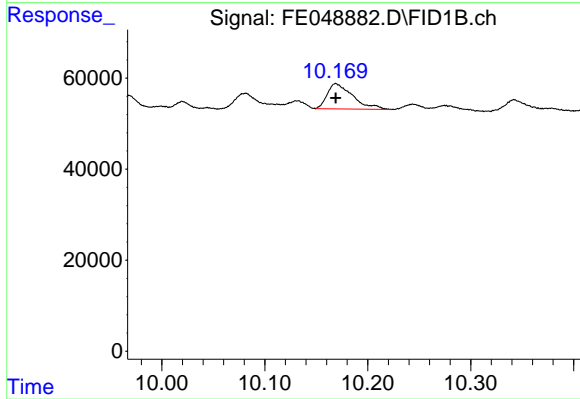
#5 A~2-methylnaphthalene (C12.89)

R.T.: 7.370 min
 Delta R.T.: 0.000 min
 Response: 68023
 Conc: 0.45 ug/ml



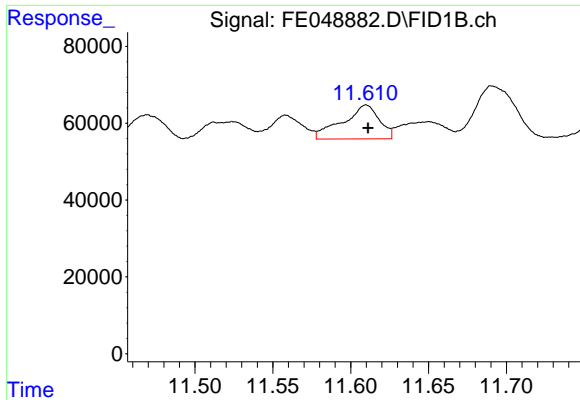
#6 n-Tetradecane (C14)

R.T.: 8.513 min
 Delta R.T.: -0.049 min
 Response: 64292
 Conc: 0.42 ug/ml



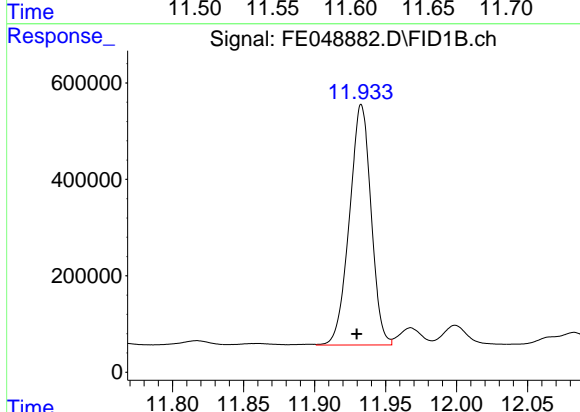
#7 n-Hexadecane (C16)

R.T.: 10.169 min
 Delta R.T.: 0.000 min
 Response: 95628
 Conc: 0.61 ug/ml

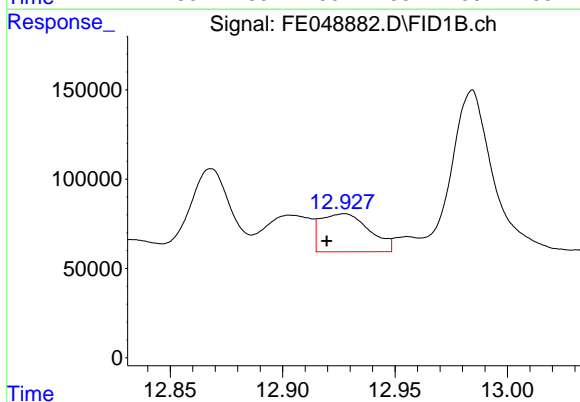


#8 n-Octadecane (C18)
 R.T.: 11.610 min
 Delta R.T.: -0.001 min
 Response: 144232
 Conc: 0.90 ug/ml

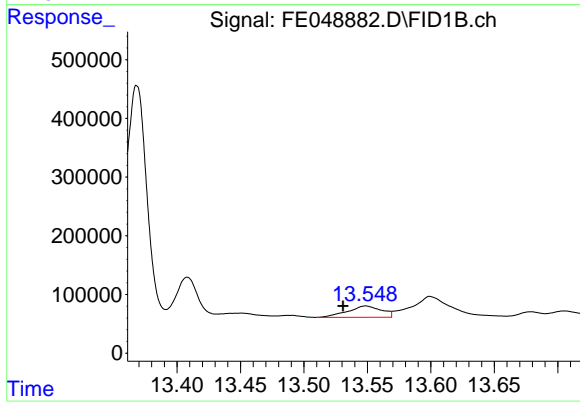
Instrument :
 FID_E
 ClientSampleId :



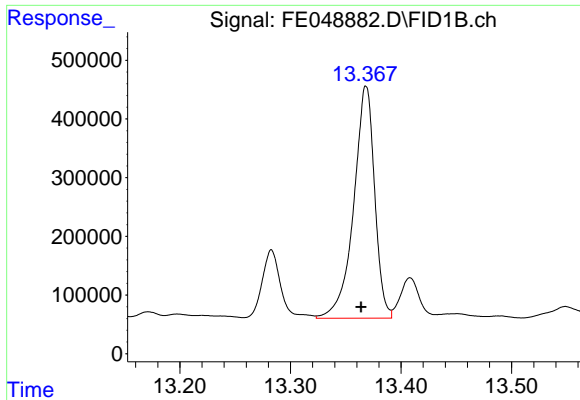
#9 ortho-Terphenyl (SURRE)
 R.T.: 11.933 min
 Delta R.T.: 0.003 min
 Response: 5289144
 Conc: 31.63 ug/ml



#10 n-Eicosane (C20)
 R.T.: 12.928 min
 Delta R.T.: 0.008 min
 Response: 322541
 Conc: 2.08 ug/ml



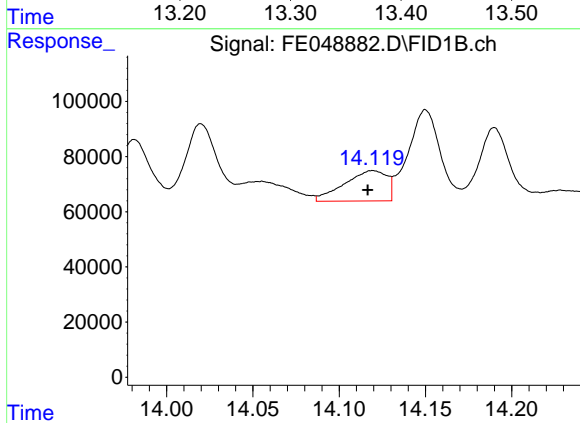
#11 n-Heneicosane (C21)
 R.T.: 13.549 min
 Delta R.T.: 0.018 min
 Response: 356008
 Conc: 2.34 ug/ml



#12 1-chlorooctadecane (SURR)

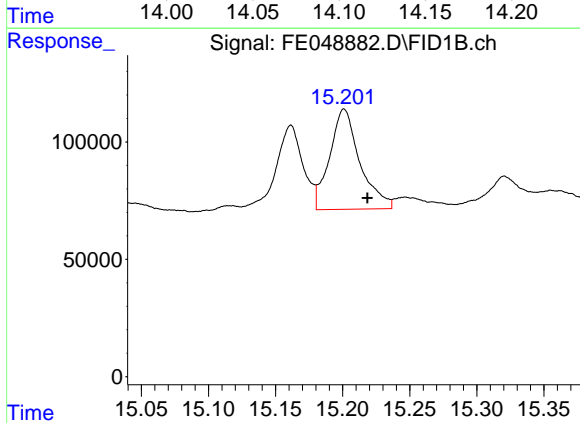
R.T.: 13.368 min
 Delta R.T.: 0.005 min
 Response: 5211676
 Conc: 40.53 ug/ml

Instrument :
 FID_E
 ClientSampleId :



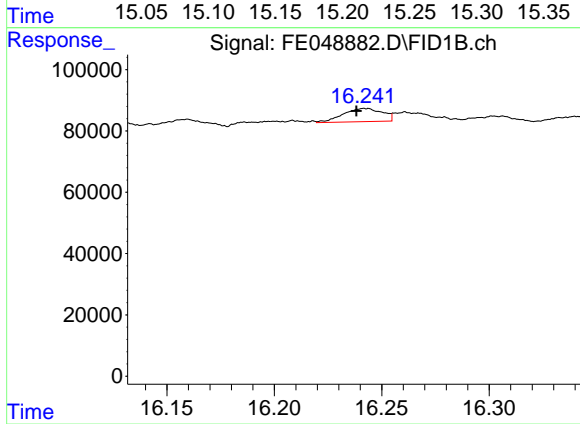
#13 n-Docosane (C22)

R.T.: 14.120 min
 Delta R.T.: 0.003 min
 Response: 189309
 Conc: 1.25 ug/ml



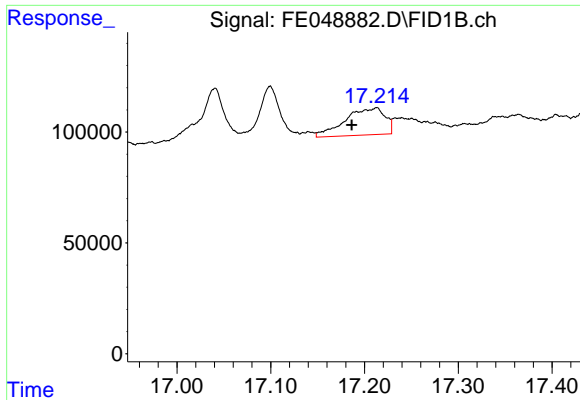
#14 n-Tetracosane (C24)

R.T.: 15.201 min
 Delta R.T.: -0.017 min
 Response: 671665
 Conc: 4.47 ug/ml



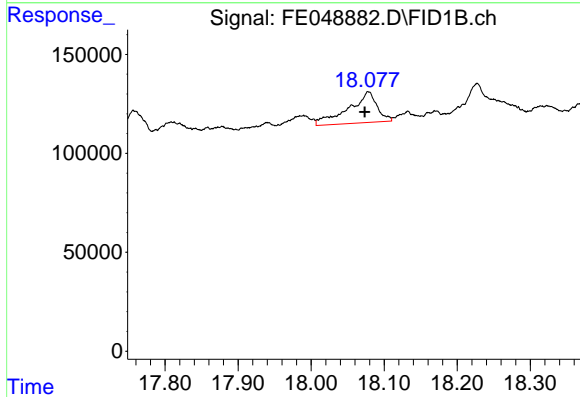
#15 n-Hexacosane (C26)

R.T.: 16.242 min
 Delta R.T.: 0.004 min
 Response: 54814
 Conc: 0.37 ug/ml

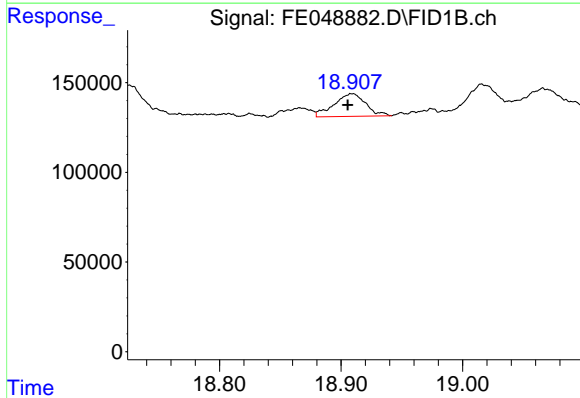


#16 n-Octacosane (C28)
 R.T.: 17.213 min
 Delta R.T.: 0.027 min
 Response: 360399
 Conc: 2.50 ug/ml

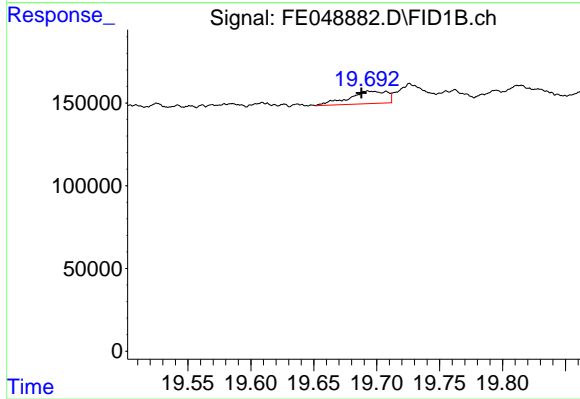
Instrument :
 FID_E
 ClientSampleId :



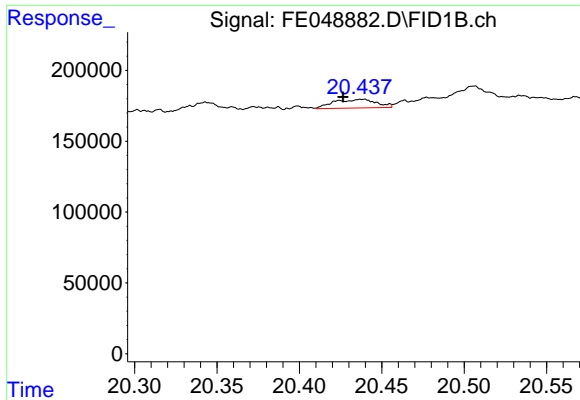
#17 n-Tricontane (C30)
 R.T.: 18.079 min
 Delta R.T.: 0.005 min
 Response: 423588
 Conc: 2.90 ug/ml



#18 n-Dotriacontane (C32)
 R.T.: 18.909 min
 Delta R.T.: 0.004 min
 Response: 227872
 Conc: 1.59 ug/ml



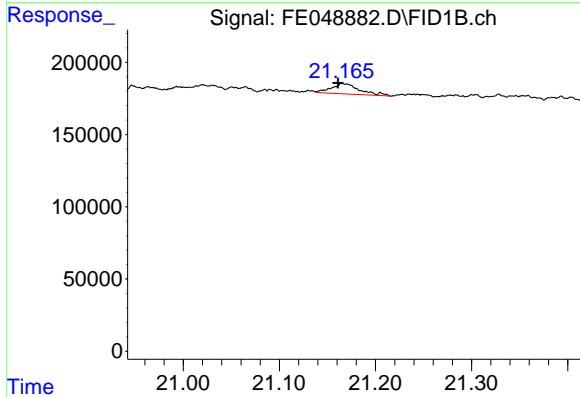
#19 n-Tetratriacontane (C34)
 R.T.: 19.693 min
 Delta R.T.: 0.005 min
 Response: 158338
 Conc: 1.14 ug/ml



#20 n-Hexatriacontane (C36)

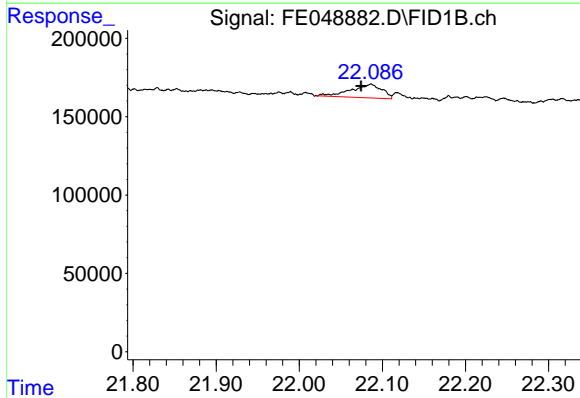
R.T.: 20.438 min
 Delta R.T.: 0.012 min
 Response: 109974
 Conc: 0.85 ug/ml

Instrument :
 FID_E
 ClientSampleId :



#21 n-Octatriacontane (C38)

R.T.: 21.166 min
 Delta R.T.: 0.005 min
 Response: 144188
 Conc: 1.12 ug/ml



#22 n-Tetracontane (C40)

R.T.: 22.086 min
 Delta R.T.: 0.012 min
 Response: 223787
 Conc: 1.83 ug/ml