

Data Path : Z:\pestpcbsrv\HPCHEM1\FID E\Data\FE062618\
Data File : FE027934.D
Signal(s) : FID1B.CH
Acq On : 26 Jun 2018 23:32
Operator : UA/AJ
Sample : I.BLK
Misc :
ALS Vial : 1 Sample Multiplier: 1

Integration File: autoint1.e
Quant Time: Jun 27 06:47:40 2018
Quant Method : Z:\pestpcbsrv\HPCHEM1\FID_E\methods\C44-FE062618.M
Quant Title :
QLast Update : Tue Jun 26 18:10:02 2018
Response via : Initial Calibration
Integrator: ChemStation 6890 Scale Mode: Large solvent peaks clipped

Volume Inj. : 1 ul
Signal Phase : Rxi-lms
Signal Info : 20m x 0.18mm x 0.18um

Compound	R.T.	Response	Conc Units

System Monitoring Compounds			
13) S TETRACOSANE-d50 (SURR...	15.080	147849	0.443 ug/ml
Target Compounds			
12) N-DOTRIACONTANE	18.948	204692	0.883 ug/ml

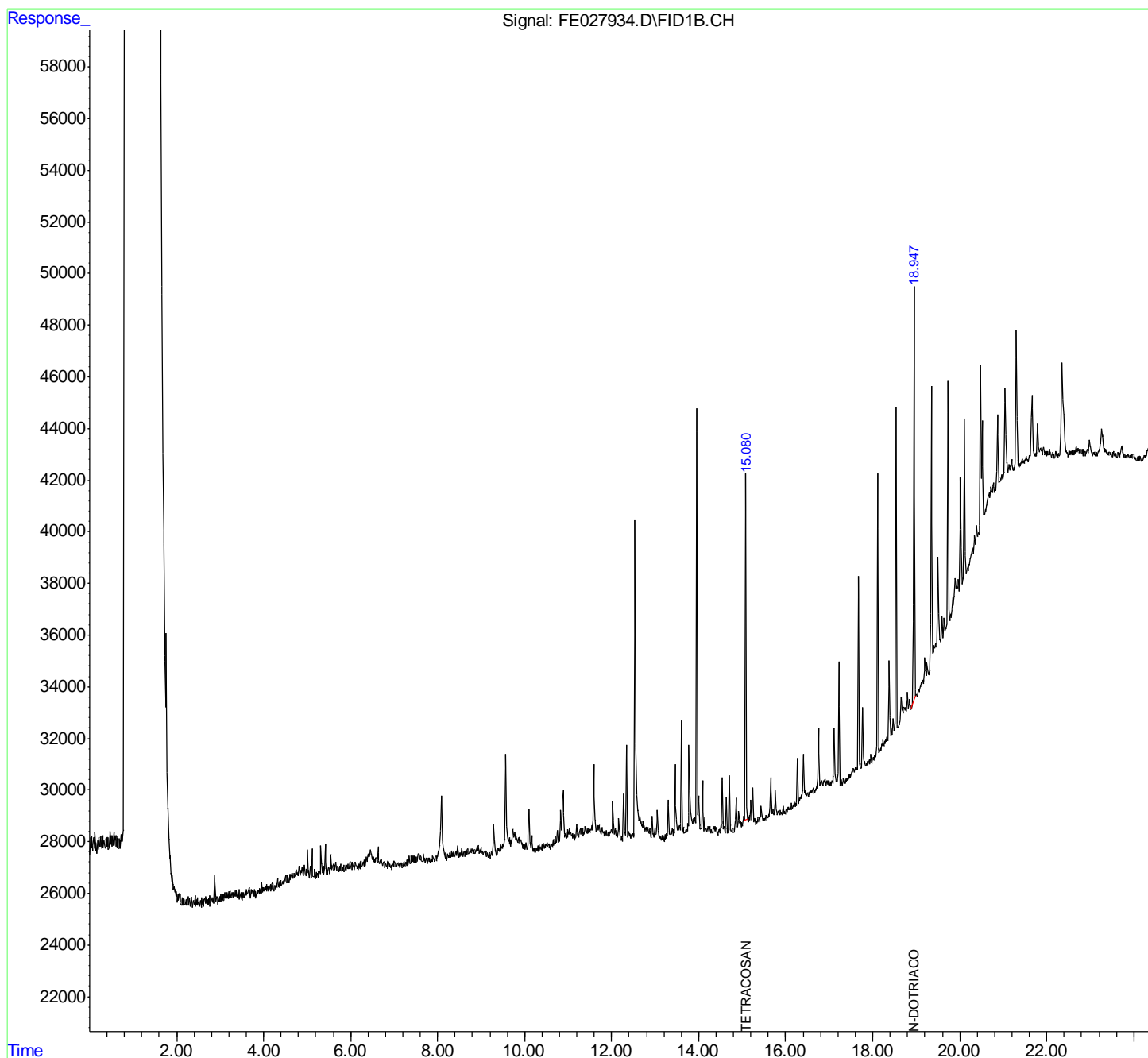
(f)=RT Delta > 1/2 Window

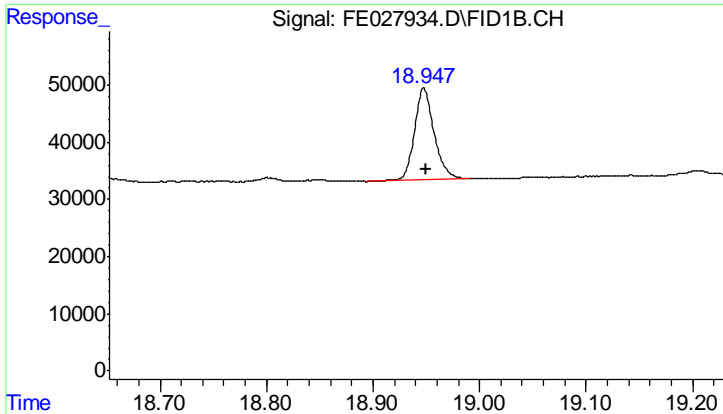
(m)=manual int.

Data Path : Z:\pestpcbsrv\HPCHEM1\FID E\Data\FE062618\
Data File : FE027934.D
Signal(s) : FID1B.CH
Acq On : 26 Jun 2018 23:32
Operator : UA/AJ
Sample : I.BLK
Misc :
ALS Vial : 1 Sample Multiplier: 1

Integration File: autoint1.e
Quant Time: Jun 27 06:47:40 2018
Quant Method : Z:\pestpcbsrv\HPCHEM1\FID_E\methods\C44-FE062618.M
Quant Title :
QLast Update : Tue Jun 26 18:10:02 2018
Response via : Initial Calibration
Integrator: ChemStation 6890 Scale Mode: Large solvent peaks clipped

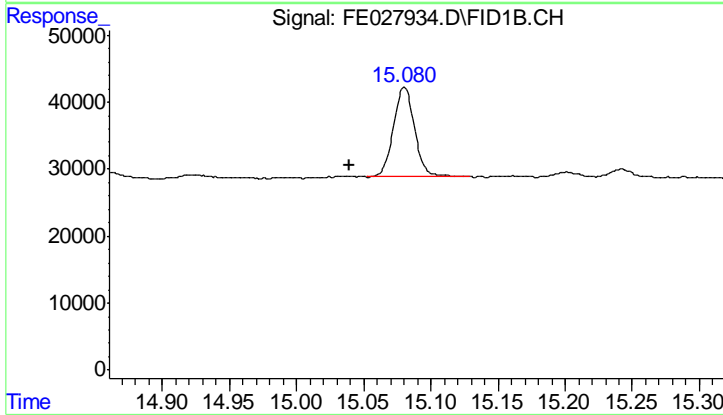
Volume Inj. : 1 ul
Signal Phase : Rxi-lms
Signal Info : 20m x 0.18mm x 0.18um





#12 N-DOTRIACONTANE

R.T.: 18.948 min
Delta R.T.: -0.002 min
Response: 204692
Conc: 0.88 ug/ml



#13 TETRACOSANE-d50 (SURROGATE)

R.T.: 15.080 min
Delta R.T.: 0.041 min
Response: 147849
Conc: 0.44 ug/ml