

Data Path : Z:\pestpcbsrv\HPCHEM1\FID_E\Data\FE062618AL\
 Data File : FE027936.D
 Signal(s) : FID1B.CH
 Acq On : 27 Jun 2018 00:40
 Operator : UA/AJ
 Sample : J3665-01
 Misc :
 ALS Vial : 15 Sample Multiplier: 1

Integration File: autoint1.e
 Quant Time: Jun 27 09:04:59 2018
 Quant Method : Z:\pestpcbsrv\HPCHEM1\FID_E\methods\Alaphatic EPH 062618.M
 Quant Title : GC Extractables
 QLast Update : Wed Jun 27 09:03:43 2018
 Response via : Initial Calibration
 Integrator: ChemStation 6890 Scale Mode: Large solvent peaks clipped

Volume Inj. : 1 ul
 Signal Phase : Rxi-lms
 Signal Info : 20M x 0.18mm x 0.18um

Compound	R.T.	Response	Conc Units

System Monitoring Compounds			
9) S ortho-Terphenyl (SURR)	11.970	10474841	36.253 ug/ml
Spiked Amount	50.000	Recovery	= 72.51%
12) S 1-chlorooctadecane (S...	13.397	10252516	35.947 ug/ml
Spiked Amount	50.000	Recovery	= 71.89%

Target Compounds

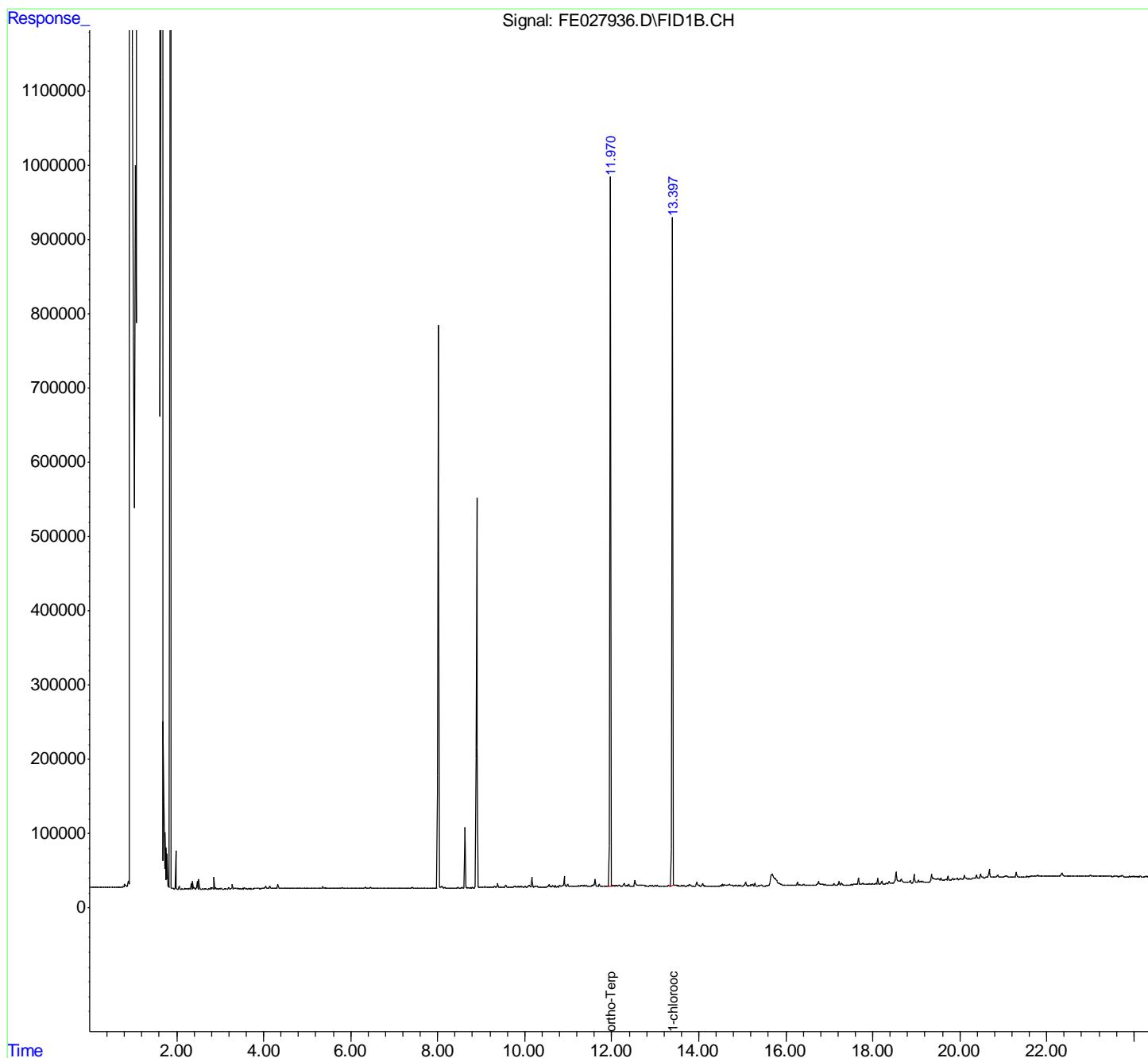
(f)=RT Delta > 1/2 Window

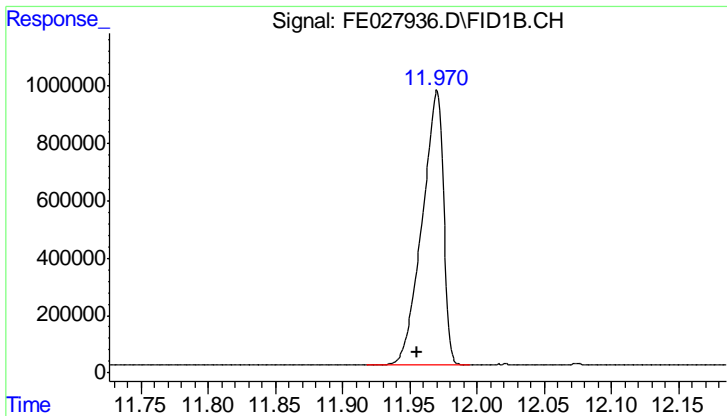
(m)=manual int.

Data Path : Z:\pestpcbsrv\HPCHEM1\FID_E\Data\FE062618AL\
 Data File : FE027936.D
 Signal(s) : FID1B.CH
 Acq On : 27 Jun 2018 00:40
 Operator : UA/AJ
 Sample : J3665-01
 Misc :
 ALS Vial : 15 Sample Multiplier: 1

Integration File: autoint1.e
 Quant Time: Jun 27 09:04:59 2018
 Quant Method : Z:\pestpcbsrv\HPCHEM1\FID_E\methods\Alaphatic EPH 062618.M
 Quant Title : GC Extractables
 QLast Update : Wed Jun 27 09:03:43 2018
 Response via : Initial Calibration
 Integrator: ChemStation 6890 Scale Mode: Large solvent peaks clipped

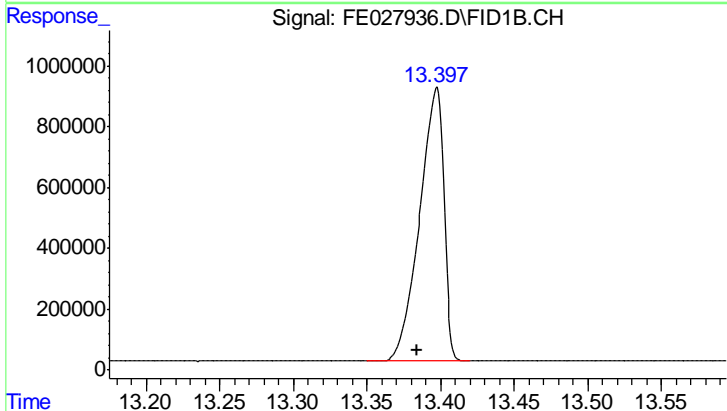
Volume Inj. : 1 ul
 Signal Phase : Rxi-lms
 Signal Info : 20M x 0.18mm x 0.18um





#9 ortho-Terphenyl (SURR)

R.T.: 11.970 min
Delta R.T.: 0.014 min
Response: 10474841
Conc: 36.25 ug/ml



#12 1-chlorooctadecane (SURR)

R.T.: 13.397 min
Delta R.T.: 0.013 min
Response: 10252516
Conc: 35.95 ug/ml