

Data Path : Z:\pestpcbsrv\HPCHEM1\FID_E\Data\FE062624AL\
 Data File : FE048896.D
 Signal(s) : FID1B.ch
 Acq On : 26 Jun 2024 11:43
 Operator : YP\AJ
 Sample : 20 PPM ALIPHATIC HC STD
 Misc :
 ALS Vial : 6 Sample Multiplier: 1

Instrument :
 FID_E
 ClientSampleId :

Integration File: autoint1.e
 Quant Time: Jun 26 12:13:34 2024
 Quant Method : Z:\pestpcbsrv\HPCHEM1\FID_E\methods\Aliphatic EPH 062124.M
 Quant Title : GC Extractables
 QLast Update : Thu Jun 20 17:53:58 2024
 Response via : Initial Calibration
 Integrator: ChemStation

Volume Inj. : 1 ul
 Signal Phase : Rxi-1ms
 Signal Info : 20M x 0.18mm x 0.18um

Compound	R.T.	Response	Conc Units

System Monitoring Compounds			
9) S ortho-Terphenyl (SURR)	11.932	3130541	18.722 ug/ml
Spiked Amount	50.000	Recovery =	37.44%
12) S 1-chlorooctadecane (S...	13.368	2397426	18.644 ug/ml
Spiked Amount	50.000	Recovery =	37.29%
Target Compounds			
1) T n-Nonane (C9)	3.322	2988748	19.880 ug/ml
2) T n-Decane (C10)	4.570	3049146	19.814 ug/ml
3) T A~Naphthalene (C11.7)	6.276	3108775	19.582 ug/ml
4) T n-Dodecane (C12)	6.735	3031798	19.639 ug/ml
5) T A~2-methylnaphthalene...	7.372	2940828	19.419 ug/ml
6) T n-Tetradecane (C14)	8.563	2979125	19.438 ug/ml
7) T n-Hexadecane (C16)	10.170	3040136	19.443 ug/ml
8) T n-Octadecane (C18)	11.614	3055536	19.159 ug/ml
10) T n-Eicosane (C20)	12.922	2919015	18.828 ug/ml
11) T n-Heneicosane (C21)	13.534	2854732	18.748 ug/ml
13) T n-Docosane (C22)	14.120	2822542	18.663 ug/ml
14) T n-Tetracosane (C24)	15.222	2790354	18.568 ug/ml
15) T n-Hexacosane (C26)	16.243	2741125	18.567 ug/ml
16) T n-Octacosane (C28)	17.193	2716439	18.836 ug/ml
17) T n-Tricontane (C30)	18.079	2828953	19.337 ug/ml
18) T n-Dotriacontane (C32)	18.912	2815106	19.689 ug/ml
19) T n-Tetratriacontane (C34)	19.695	2733960	19.758 ug/ml
20) T n-Hexatriacontane (C36)	20.434	2613303	20.107 ug/ml
21) T n-Octatriacontane (C38)	21.169	2584635	20.162 ug/ml
22) T n-Tetracontane (C40)	22.085	2573390	21.014 ug/ml

(f)=RT Delta > 1/2 Window

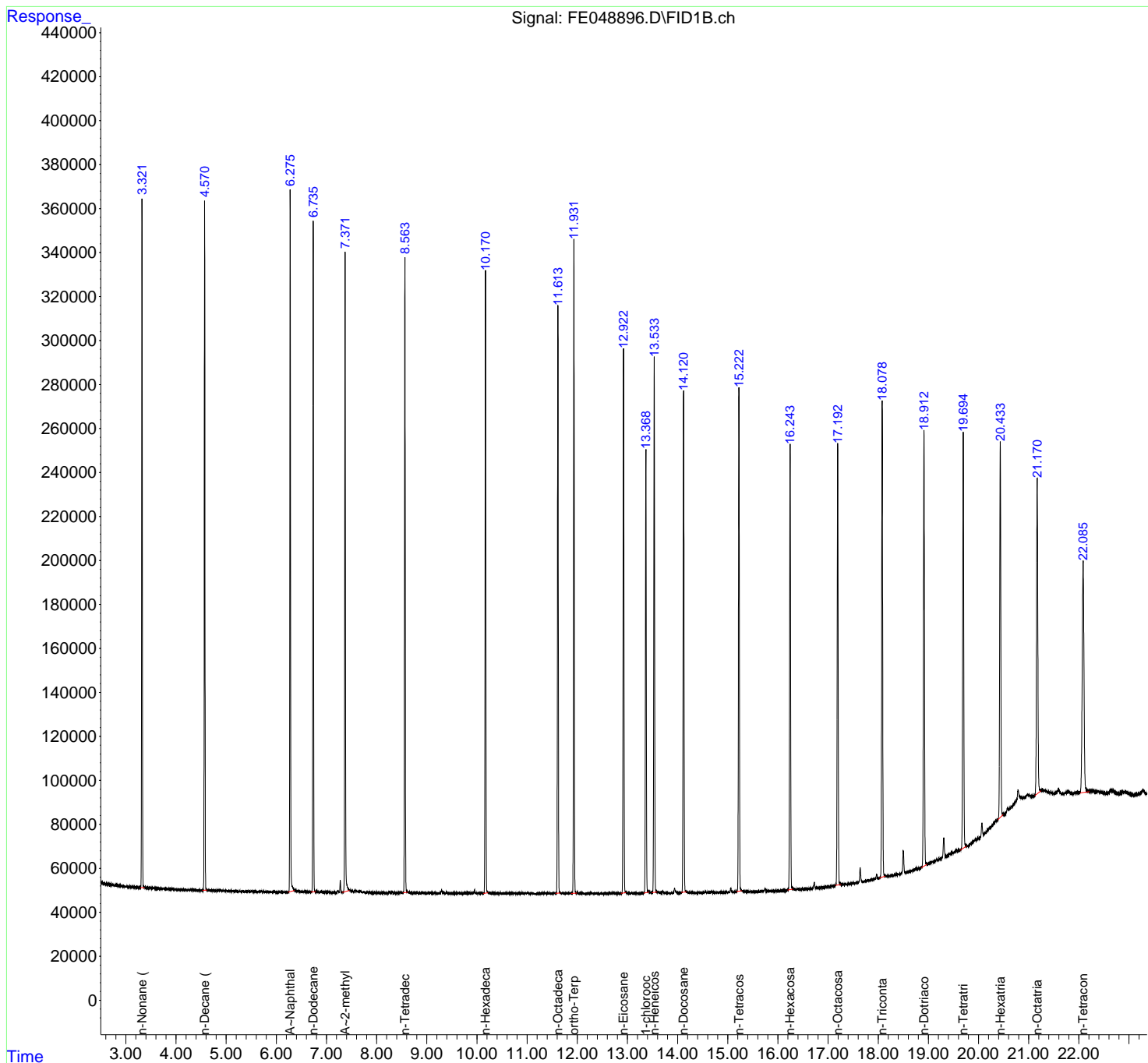
(m)=manual int.

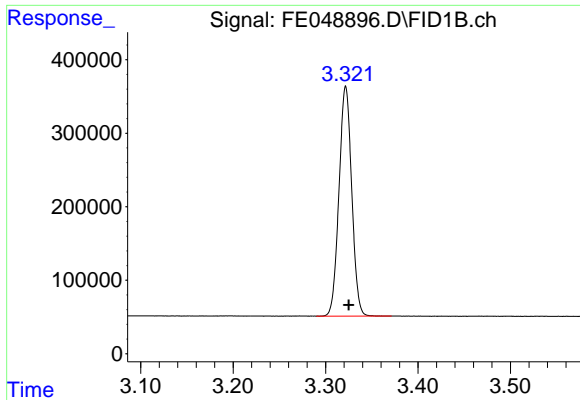
Data Path : Z:\pestpcbsrv\HPCHEM1\FID_E\Data\FE062624AL\
 Data File : FE048896.D
 Signal(s) : FID1B.ch
 Acq On : 26 Jun 2024 11:43
 Operator : YP\AJ
 Sample : 20 PPM ALIPHATIC HC STD
 Misc :
 ALS Vial : 6 Sample Multiplier: 1

Instrument :
 FID_E
 ClientSampleId :

Integration File: autoint1.e
 Quant Time: Jun 26 12:13:34 2024
 Quant Method : Z:\pestpcbsrv\HPCHEM1\FID_E\methods\Aliphatic EPH 062124.M
 Quant Title : GC Extractables
 QLast Update : Thu Jun 20 17:53:58 2024
 Response via : Initial Calibration
 Integrator: ChemStation

Volume Inj. : 1 ul
 Signal Phase : Rxi-1ms
 Signal Info : 20M x 0.18mm x 0.18um

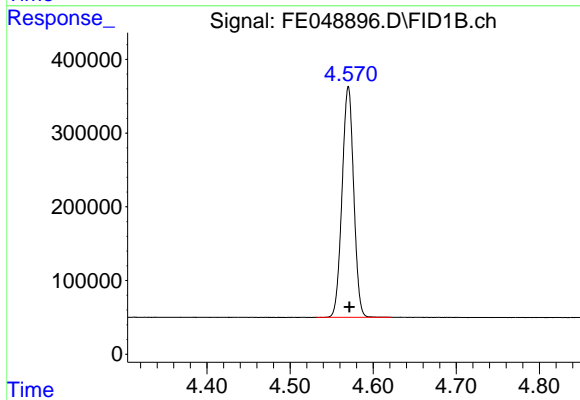




#1 n-Nonane (C9)

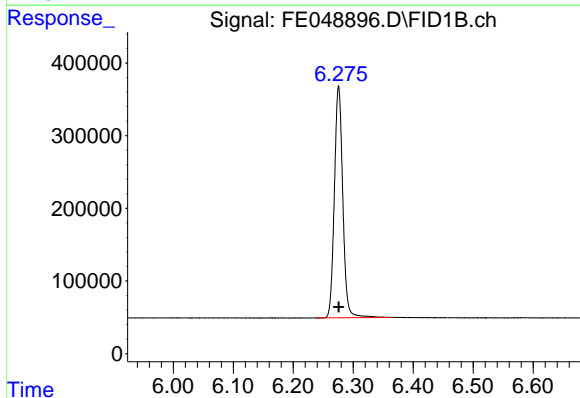
R.T.: 3.322 min
Delta R.T.: -0.003 min
Response: 2988748
Conc: 19.88 ug/ml

Instrument :
FID_E
ClientSampleId :



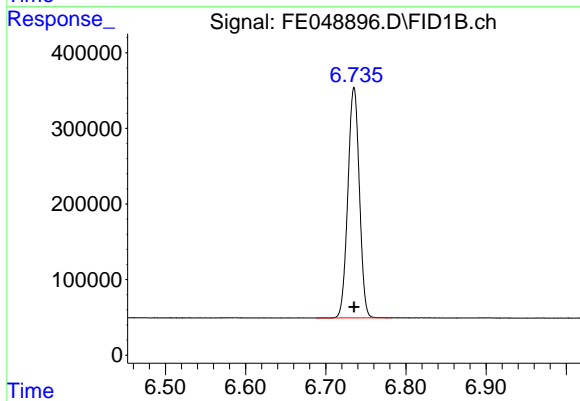
#2 n-Decane (C10)

R.T.: 4.570 min
Delta R.T.: -0.001 min
Response: 3049146
Conc: 19.81 ug/ml



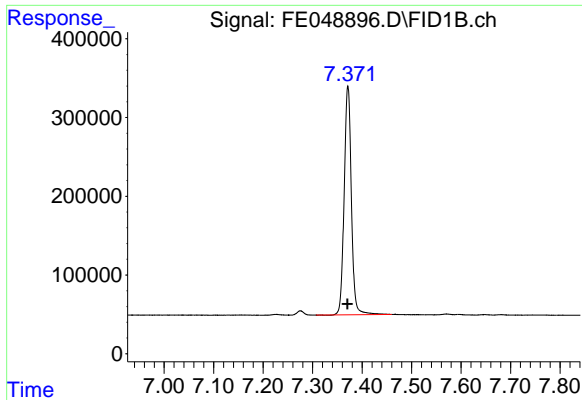
#3 A~Naphthalene (C11.7)

R.T.: 6.276 min
Delta R.T.: 0.000 min
Response: 3108775
Conc: 19.58 ug/ml



#4 n-Dodecane (C12)

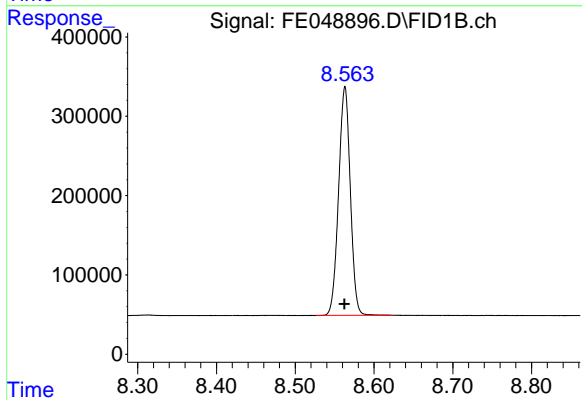
R.T.: 6.735 min
Delta R.T.: 0.000 min
Response: 3031798
Conc: 19.64 ug/ml



#5 A~2-methylnaphthalene (C12.89)

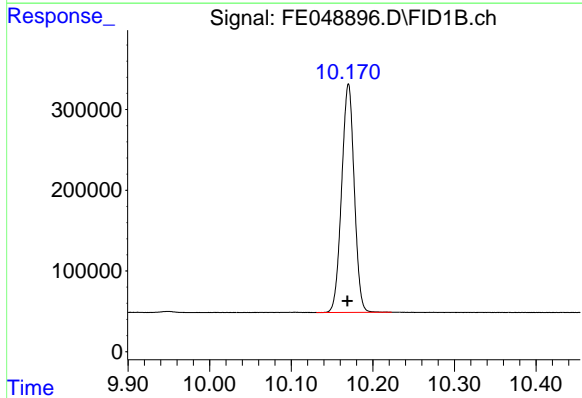
R.T.: 7.372 min
 Delta R.T.: 0.000 min
 Response: 2940828
 Conc: 19.42 ug/ml

Instrument : FID_E
 ClientSampleId :



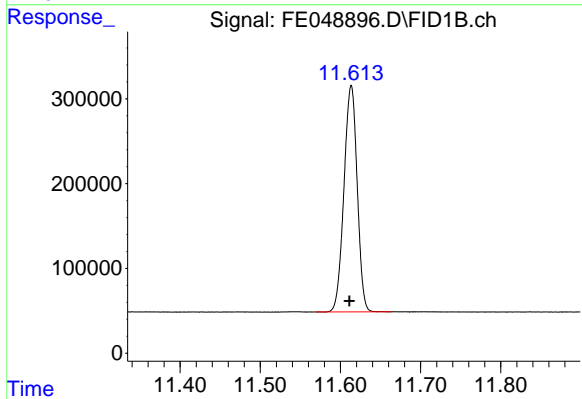
#6 n-Tetradecane (C14)

R.T.: 8.563 min
 Delta R.T.: 0.000 min
 Response: 2979125
 Conc: 19.44 ug/ml



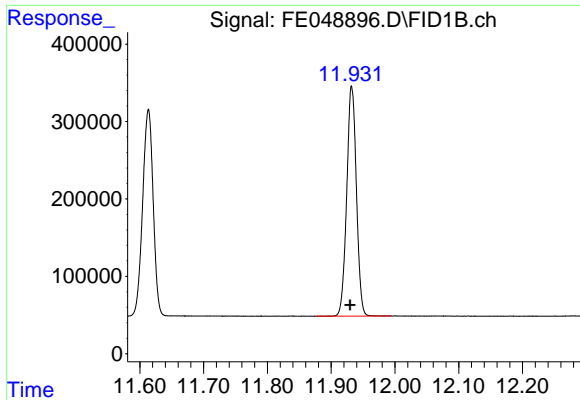
#7 n-Hexadecane (C16)

R.T.: 10.170 min
 Delta R.T.: 0.002 min
 Response: 3040136
 Conc: 19.44 ug/ml



#8 n-Octadecane (C18)

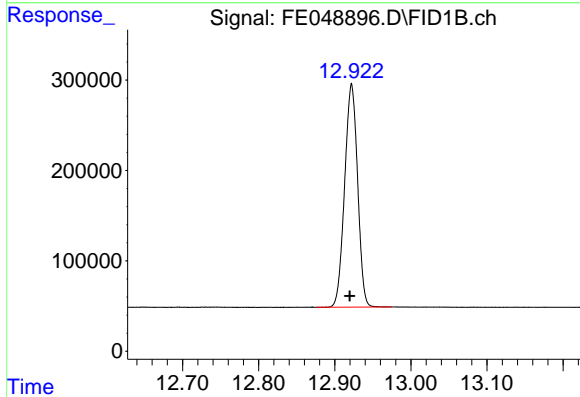
R.T.: 11.614 min
 Delta R.T.: 0.003 min
 Response: 3055536
 Conc: 19.16 ug/ml



#9 ortho-Terphenyl (SURR)

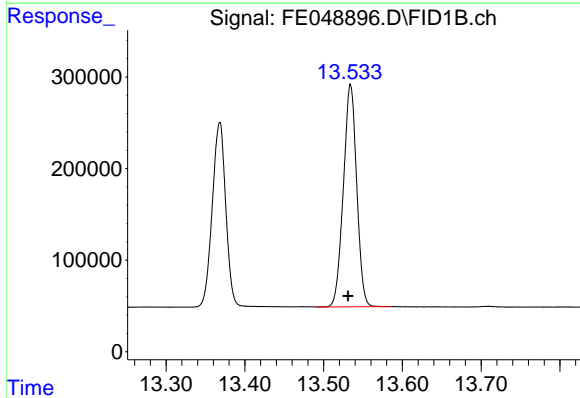
R.T.: 11.932 min
 Delta R.T.: 0.002 min
 Response: 3130541
 Conc: 18.72 ug/ml

Instrument :
 FID_E
 ClientSampleId :



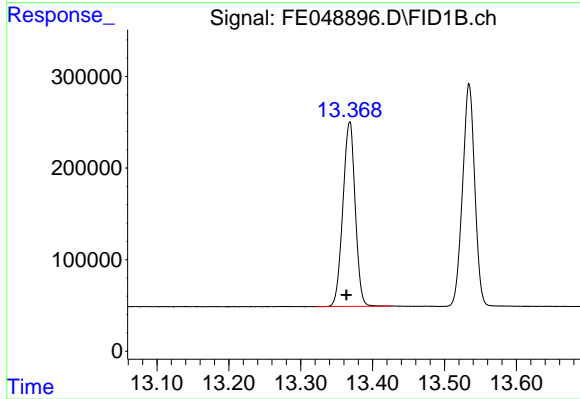
#10 n-Eicosane (C20)

R.T.: 12.922 min
 Delta R.T.: 0.003 min
 Response: 2919015
 Conc: 18.83 ug/ml



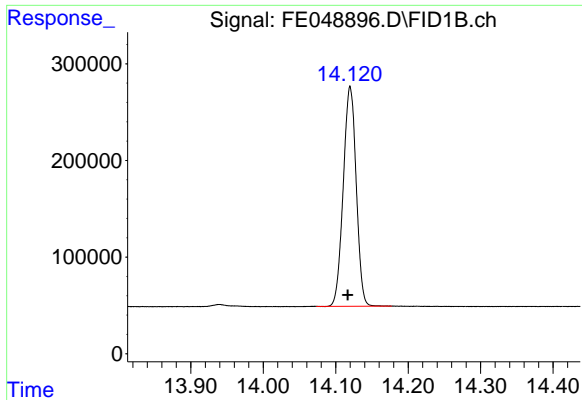
#11 n-Heneicosane (C21)

R.T.: 13.534 min
 Delta R.T.: 0.003 min
 Response: 2854732
 Conc: 18.75 ug/ml



#12 1-chlorooctadecane (SURR)

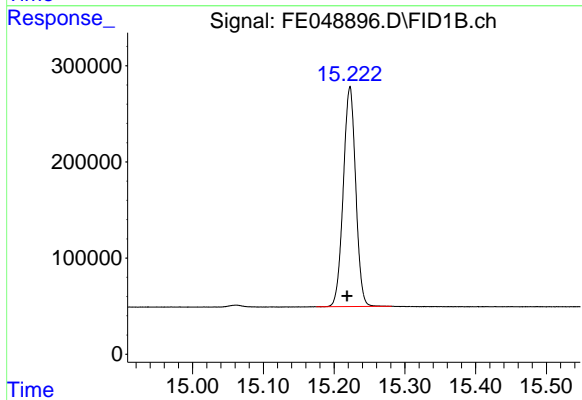
R.T.: 13.368 min
 Delta R.T.: 0.004 min
 Response: 2397426
 Conc: 18.64 ug/ml



#13 n-Docosane (C22)

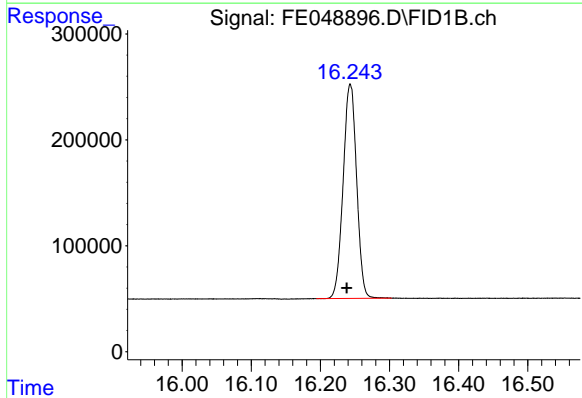
R.T.: 14.120 min
 Delta R.T.: 0.003 min
 Response: 2822542
 Conc: 18.66 ug/ml

Instrument :
 FID_E
 ClientSampleId :



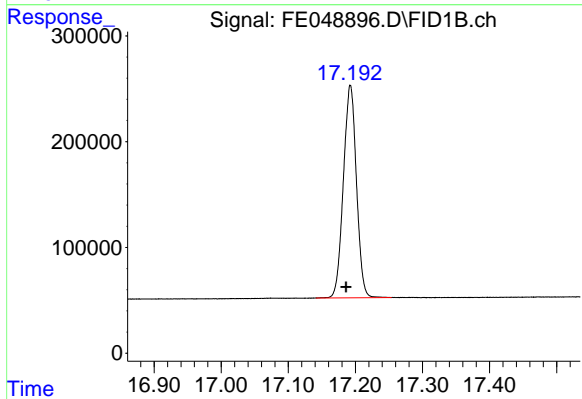
#14 n-Tetracosane (C24)

R.T.: 15.222 min
 Delta R.T.: 0.004 min
 Response: 2790354
 Conc: 18.57 ug/ml



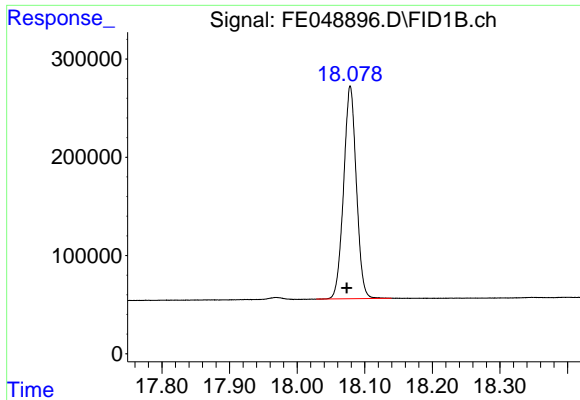
#15 n-Hexacosane (C26)

R.T.: 16.243 min
 Delta R.T.: 0.005 min
 Response: 2741125
 Conc: 18.57 ug/ml



#16 n-Octacosane (C28)

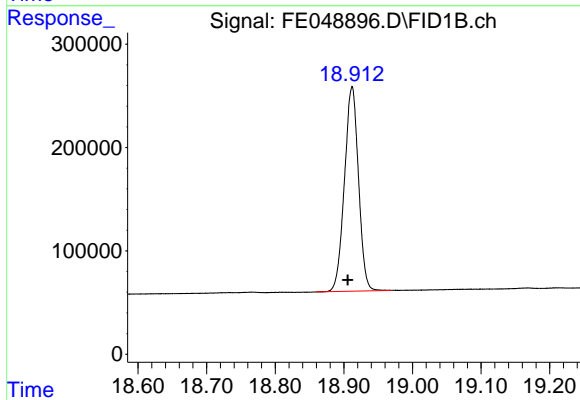
R.T.: 17.193 min
 Delta R.T.: 0.006 min
 Response: 2716439
 Conc: 18.84 ug/ml



#17 n-Tricontane (C30)

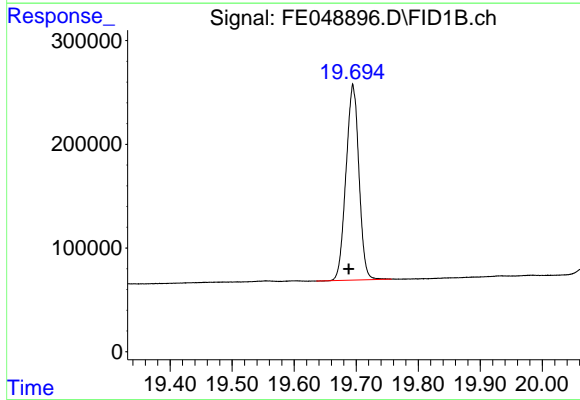
R.T.: 18.079 min
Delta R.T.: 0.005 min
Response: 2828953
Conc: 19.34 ug/ml

Instrument :
FID_E
ClientSampleId :



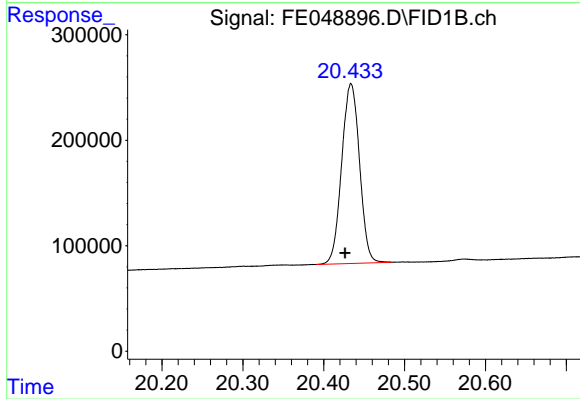
#18 n-Dotriacontane (C32)

R.T.: 18.912 min
Delta R.T.: 0.007 min
Response: 2815106
Conc: 19.69 ug/ml



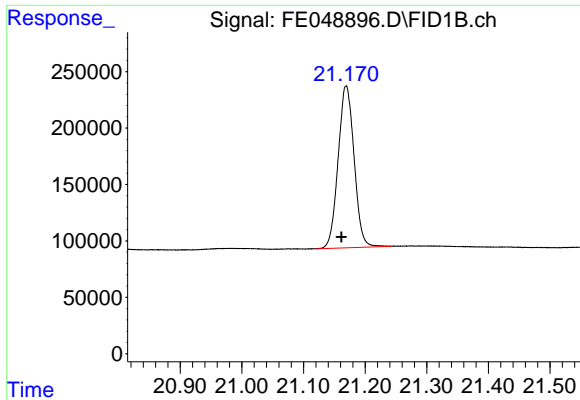
#19 n-Tetratriacontane (C34)

R.T.: 19.695 min
Delta R.T.: 0.007 min
Response: 2733960
Conc: 19.76 ug/ml



#20 n-Hexatriacontane (C36)

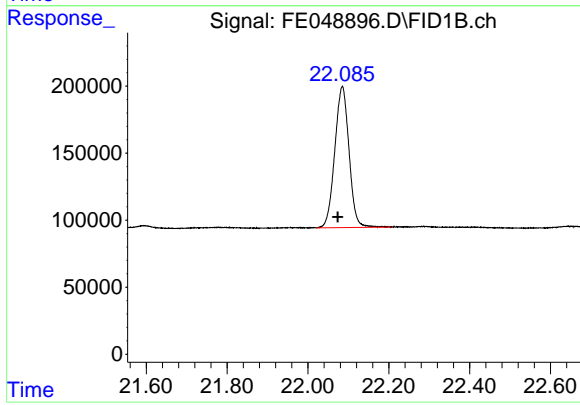
R.T.: 20.434 min
Delta R.T.: 0.007 min
Response: 2613303
Conc: 20.11 ug/ml



#21 n-Octatriacontane (C38)

R.T.: 21.169 min
Delta R.T.: 0.008 min
Response: 2584635
Conc: 20.16 ug/ml

Instrument :
FID_E
ClientSampleId :



#22 n-Tetracontane (C40)

R.T.: 22.085 min
Delta R.T.: 0.011 min
Response: 2573390
Conc: 21.01 ug/ml