

Data Path : Z:\pestpcbsrv\HPCHEM1\FID\_E\Data\FE062625AL\  
 Data File : FE054595.D  
 Signal(s) : FID1B.ch  
 Acq On : 26 Jun 2025 07:59  
 Operator : YP\AJ  
 Sample : Q2398-06DL 100X  
 Misc :  
 ALS Vial : 6 Sample Multiplier: 1

Instrument :  
 FID\_E  
 ClientSampleId :  
 ARS20-0036DL

Integration File: autoint1.e  
 Quant Time: Jun 27 01:58:14 2025  
 Quant Method : Z:\pestpcbsrv\HPCHEM1\FID\_E\methods\Aliphatic EPH 061025.M  
 Quant Title : GC Extractables  
 QLast Update : Tue Jun 10 07:24:04 2025  
 Response via : Initial Calibration  
 Integrator: ChemStation

Volume Inj. : 1 ul  
 Signal Phase : Rxi-1ms  
 Signal Info : 20M x 0.18mm x 0.18um

Compound	R.T.	Response	Conc Units
-----			
System Monitoring Compounds			
9) S ortho-Terphenyl (SURR)	11.821	273767	1.657 ug/ml
Spiked Amount 50.000		Recovery =	3.31%
12) S 1-chlorooctadecane (S...)	13.268	74598	0.612 ug/ml
Spiked Amount 50.000		Recovery =	1.22%
Target Compounds			
10) T n-Eicosane (C20)	12.822	98741	0.738 ug/ml
11) T n-Heneicosane (C21)	13.433	35723	0.269 ug/ml
17) T n-Tricontane (C30)	17.990	24981	0.202 ug/ml
18) T n-Dotriacontane (C32)	18.825	32558	0.259 ug/ml
19) T n-Tetratriacontane (C34)	19.609	22973	0.185 ug/ml
20) T n-Hexatriacontane (C36)	20.352	22603	0.176 ug/ml
-----			

(f)=RT Delta > 1/2 Window

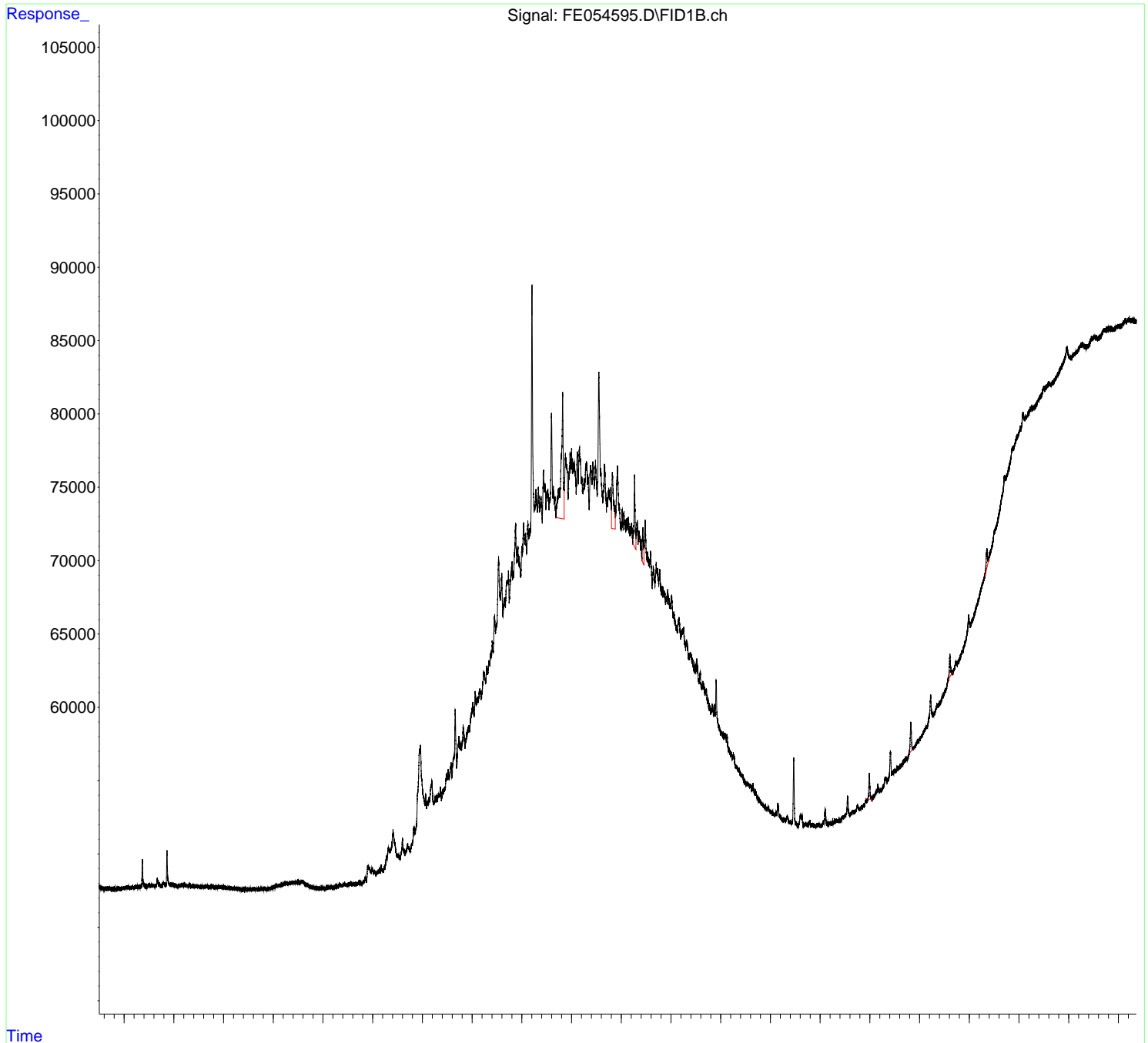
(m)=manual int.

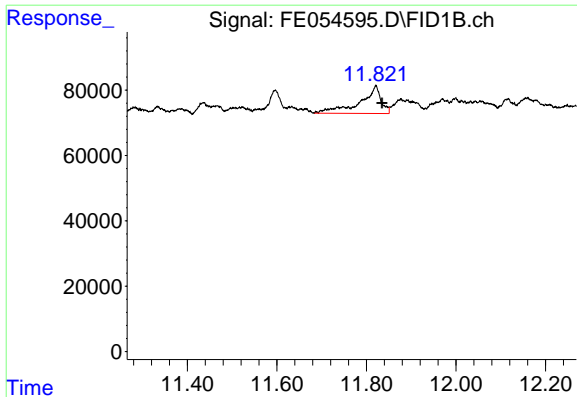
Data Path : Z:\pestpcbsrv\HPCHEM1\FID\_E\Data\FE062625AL\  
Data File : FE054595.D  
Signal(s) : FID1B.ch  
Acq On : 26 Jun 2025 07:59  
Operator : YP\AJ  
Sample : Q2398-06DL 100X  
Misc :  
ALS Vial : 6 Sample Multiplier: 1

Instrument :  
FID\_E  
ClientSampleId :  
ARS20-0036DL

Integration File: autoint1.e  
Quant Time: Jun 27 01:58:14 2025  
Quant Method : Z:\pestpcbsrv\HPCHEM1\FID\_E\methods\Aliphatic EPH 061025.M  
Quant Title : GC Extractables  
QLast Update : Tue Jun 10 07:24:04 2025  
Response via : Initial Calibration  
Integrator: ChemStation

Volume Inj. : 1 ul  
Signal Phase : Rxi-1ms  
Signal Info : 20M x 0.18mm x 0.18um

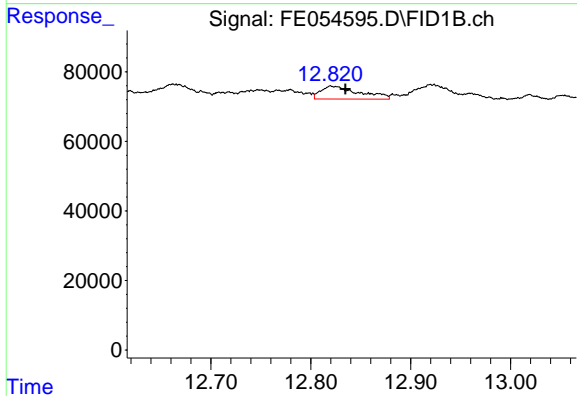




#9 ortho-Terphenyl (SURR)

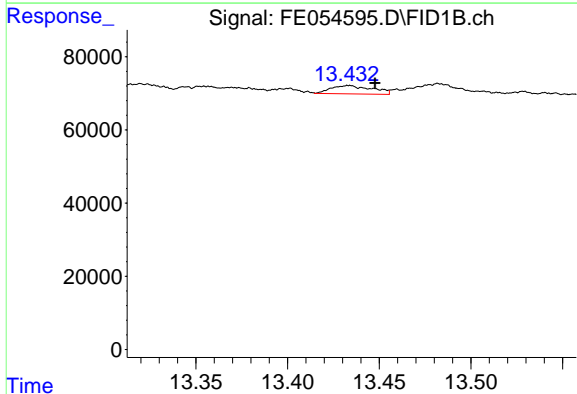
R.T.: 11.821 min  
 Delta R.T.: -0.014 min  
 Response: 273767  
 Conc: 1.66 ug/ml

Instrument :  
 FID\_E  
 ClientSampleId :  
 ARS20-0036DL



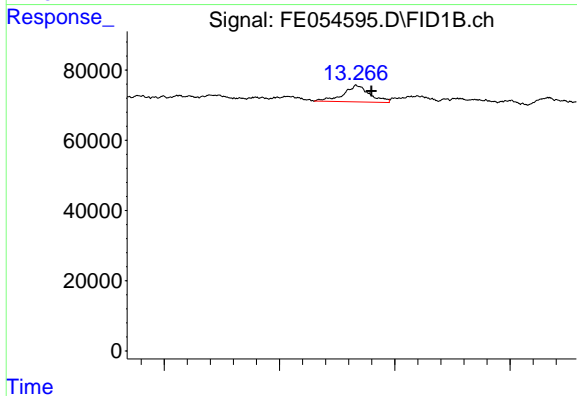
#10 n-Eicosane (C20)

R.T.: 12.822 min  
 Delta R.T.: -0.013 min  
 Response: 98741  
 Conc: 0.74 ug/ml



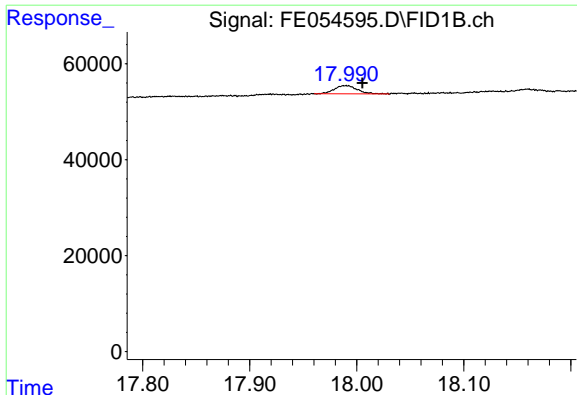
#11 n-Heneicosane (C21)

R.T.: 13.433 min  
 Delta R.T.: -0.015 min  
 Response: 35723  
 Conc: 0.27 ug/ml



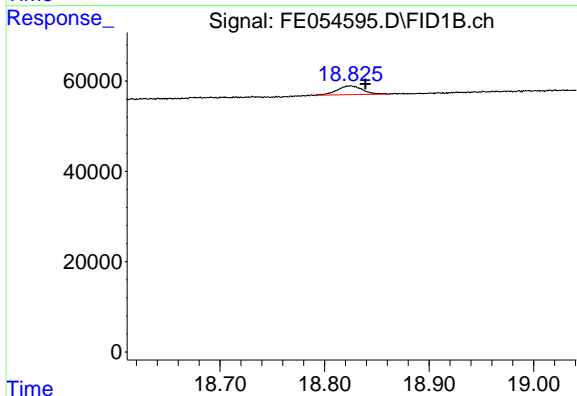
#12 1-chlorooctadecane (SURR)

R.T.: 13.268 min  
 Delta R.T.: -0.012 min  
 Response: 74598  
 Conc: 0.61 ug/ml

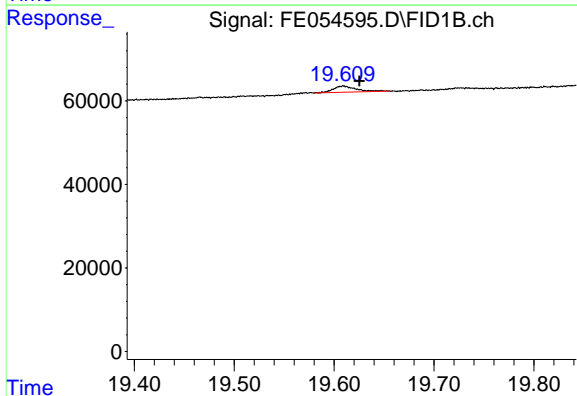


#17 n-Tricontane (C30)  
 R.T.: 17.990 min  
 Delta R.T.: -0.016 min  
 Response: 24981  
 Conc: 0.20 ug/ml

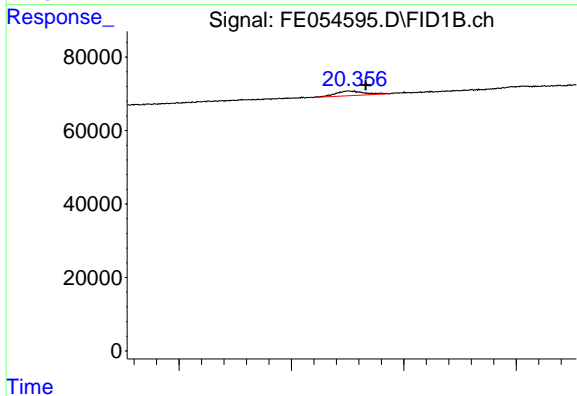
Instrument :  
 FID\_E  
 ClientSampleId :  
 ARS20-0036DL



#18 n-Dotriacontane (C32)  
 R.T.: 18.825 min  
 Delta R.T.: -0.014 min  
 Response: 32558  
 Conc: 0.26 ug/ml



#19 n-Tetratriacontane (C34)  
 R.T.: 19.609 min  
 Delta R.T.: -0.016 min  
 Response: 22973  
 Conc: 0.18 ug/ml



#20 n-Hexatriacontane (C36)  
 R.T.: 20.352 min  
 Delta R.T.: -0.014 min  
 Response: 22603  
 Conc: 0.18 ug/ml