

Data Path : Z:\pestpcbsrv\HPCHEM1\FID_E\Data\FE062718AL\
 Data File : FE027974.D
 Signal(s) : FID1B.CH
 Acq On : 28 Jun 2018 3:48
 Operator : UA/AJ
 Sample : J3688-07DL 10X
 Misc :
 ALS Vial : 30 Sample Multiplier: 1

Instrument :
 FID_E
 ClientSampleId :

Integration File: autoint1.e
 Quant Time: Jun 28 08:18:45 2018
 Quant Method : Z:\pestpcbsrv\HPCHEM1\FID_E\methods\Alaphatic EPH 062618.M
 Quant Title : GC Extractables
 QLast Update : Wed Jun 27 09:03:43 2018
 Response via : Initial Calibration
 Integrator: ChemStation 6890 Scale Mode: Large solvent peaks clipped

Volume Inj. : 1 ul
 Signal Phase : Rxi-1ms
 Signal Info : 20M x 0.18mm x 0.18um

Compound	R.T.	Response	Conc Units

System Monitoring Compounds			
9) S ortho-Terphenyl (SURR)	11.957	831201	2.877 ug/ml
Spiked Amount	50.000	Recovery =	5.75%
12) S 1-chlorooctadecane (S...	13.384	683062	2.395 ug/ml
Spiked Amount	50.000	Recovery =	4.79%

Target Compounds

(f)=RT Delta > 1/2 Window

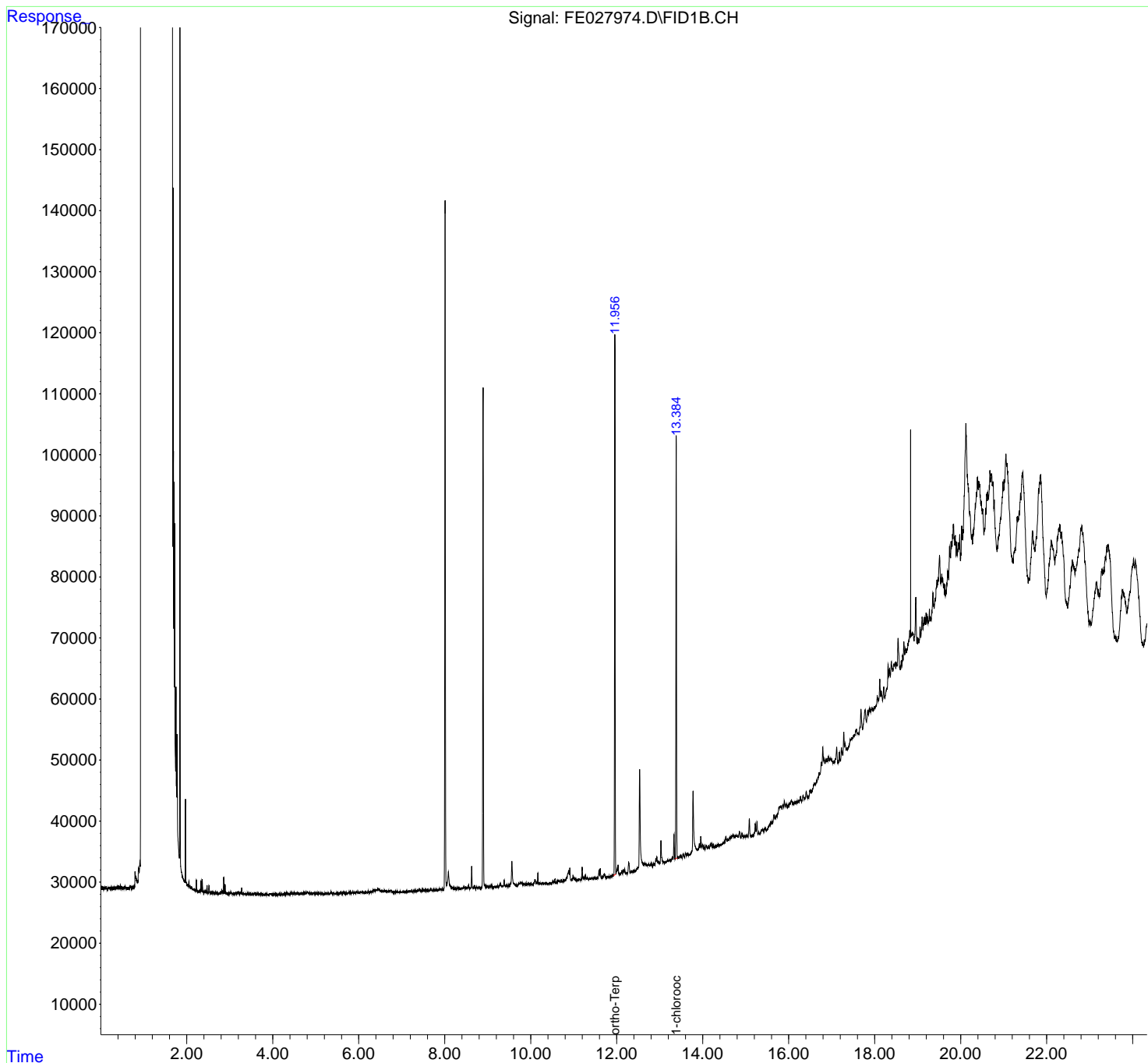
(m)=manual int.

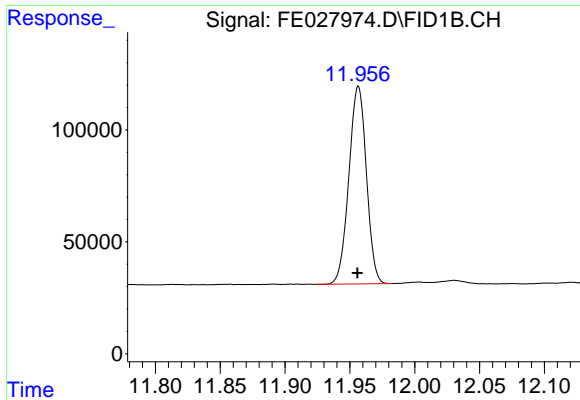
Data Path : Z:\pestpcbsrv\HPCHEM1\FID_E\Data\FE062718AL\
 Data File : FE027974.D
 Signal(s) : FID1B.CH
 Acq On : 28 Jun 2018 3:48
 Operator : UA/AJ
 Sample : J3688-07DL 10X
 Misc :
 ALS Vial : 30 Sample Multiplier: 1

Instrument :
 FID_E
 ClientSampled :

Integration File: autoint1.e
 Quant Time: Jun 28 08:18:45 2018
 Quant Method : Z:\pestpcbsrv\HPCHEM1\FID_E\methods\Alaphatic EPH 062618.M
 Quant Title : GC Extractables
 QLast Update : Wed Jun 27 09:03:43 2018
 Response via : Initial Calibration
 Integrator: ChemStation 6890 Scale Mode: Large solvent peaks clipped

Volume Inj. : 1 ul
 Signal Phase : Rxi-1ms
 Signal Info : 20M x 0.18mm x 0.18um

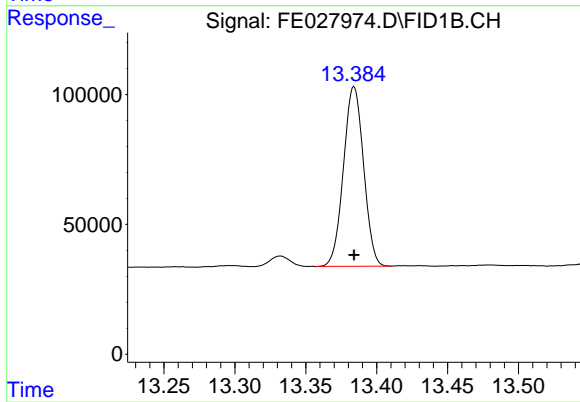




#9 ortho-Terphenyl (SURR)

R.T.: 11.957 min
Delta R.T.: 0.000 min
Response: 831201
Conc: 2.88 ug/ml

Instrument :
FID_E
ClientSampleId :



#12 1-chlorooctadecane (SURR)

R.T.: 13.384 min
Delta R.T.: 0.000 min
Response: 683062
Conc: 2.39 ug/ml