

Data Path : Z:\pestpcbsrv\HPCHEM1\FID_E\Data\FE062823AL\
 Data File : FE042977.D
 Signal(s) : FID1B.ch
 Acq On : 28 Jun 2023 10:20
 Operator : YP\AJ
 Sample : 03415-02
 Misc :
 ALS Vial : 11 Sample Multiplier: 1

Instrument :
 FID_E
 ClientSampleId :

Integration File: autoint1.e
 Quant Time: Jun 29 02:47:29 2023
 Quant Method : Z:\pestpcbsrv\HPCHEM1\FID_E\methods\Aliphatic EPH 062123.M
 Quant Title : GC Extractables
 QLast Update : Wed Jun 21 11:03:59 2023
 Response via : Initial Calibration
 Integrator: ChemStation

Volume Inj. : 1 ul
 Signal Phase : Rxi-1ms
 Signal Info : 20M x 0.18mm x 0.18um

Compound	R.T.	Response	Conc Units
System Monitoring Compounds			
9) S ortho-Terphenyl (SURR)	11.914	4852694	26.416 ug/ml
Spiked Amount	50.000	Recovery =	52.83%
12) S 1-chlorooctadecane (S...	13.352	3696394	27.161 ug/ml
Spiked Amount	50.000	Recovery =	54.32%

Target Compounds

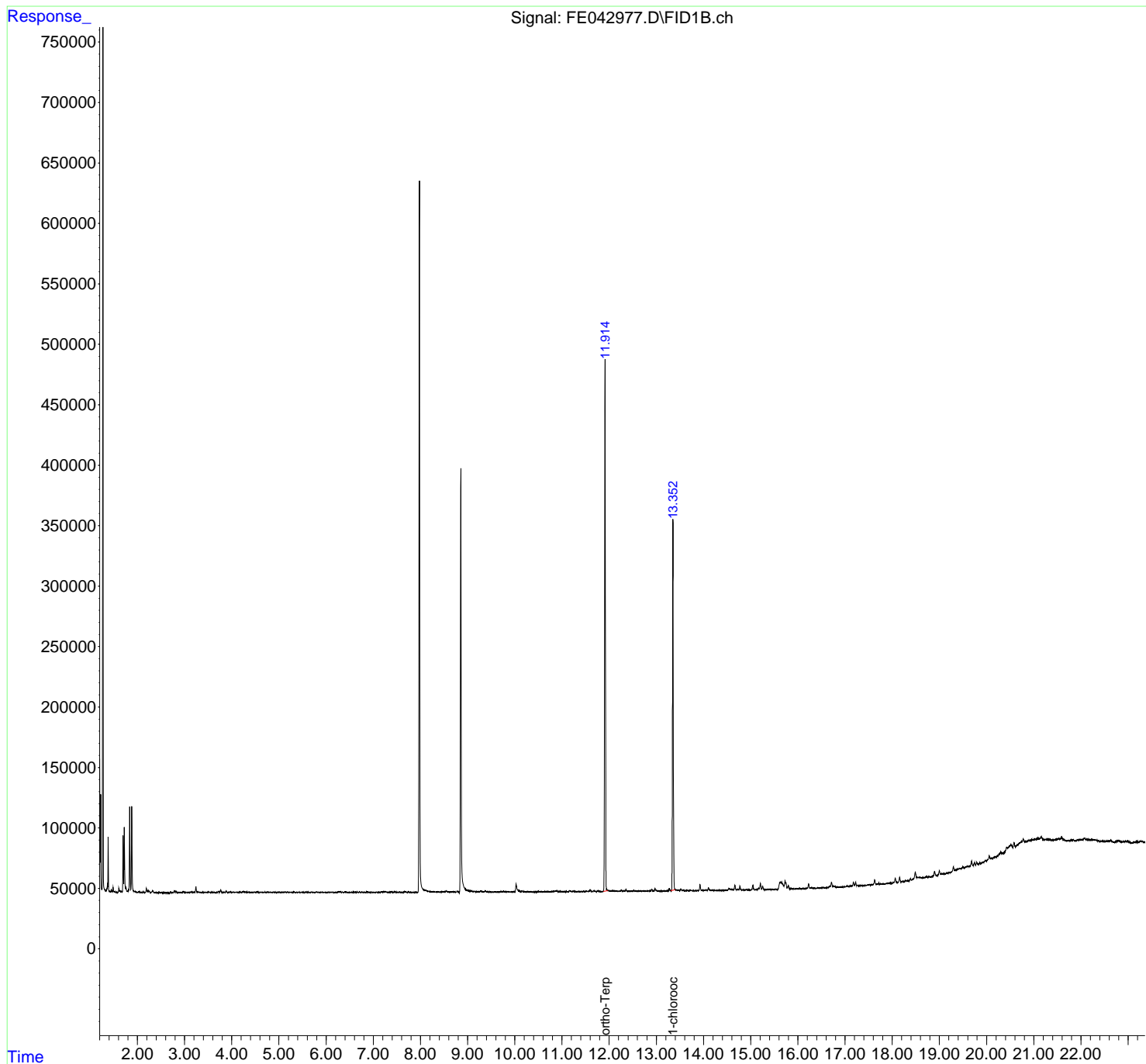
(f)=RT Delta > 1/2 Window (m)=manual int.

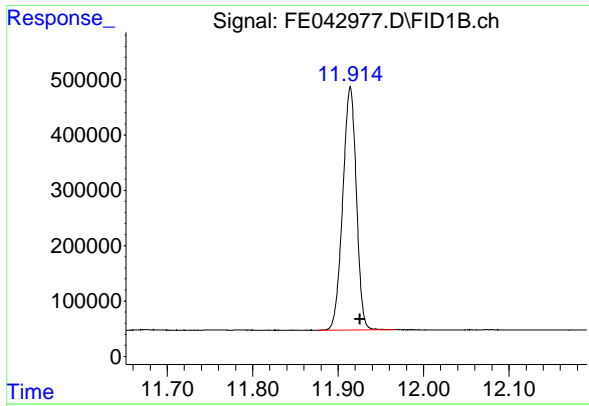
Data Path : Z:\pestpcbsrv\HPCHEM1\FID_E\Data\FE062823AL\
 Data File : FE042977.D
 Signal(s) : FID1B.ch
 Acq On : 28 Jun 2023 10:20
 Operator : YP\AJ
 Sample : 03415-02
 Misc :
 ALS Vial : 11 Sample Multiplier: 1

Instrument :
 FID_E
 ClientSampleId :

Integration File: autoint1.e
 Quant Time: Jun 29 02:47:29 2023
 Quant Method : Z:\pestpcbsrv\HPCHEM1\FID_E\methods\Aliphatic EPH 062123.M
 Quant Title : GC Extractables
 QLast Update : Wed Jun 21 11:03:59 2023
 Response via : Initial Calibration
 Integrator: ChemStation

Volume Inj. : 1 ul
 Signal Phase : Rxi-1ms
 Signal Info : 20M x 0.18mm x 0.18um

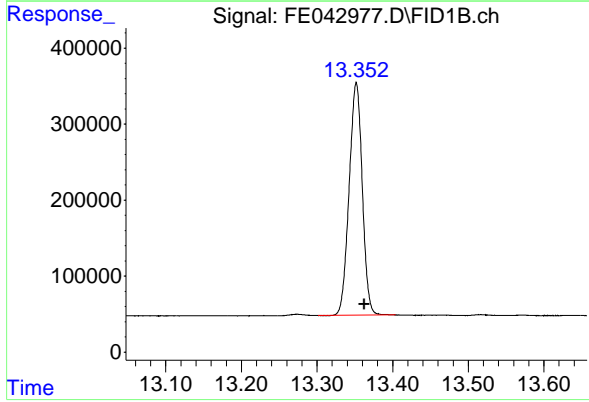




#9 ortho-Terphenyl (SURR)

R.T.: 11.914 min
Delta R.T.: -0.011 min
Response: 4852694
Conc: 26.42 ug/ml

Instrument :
FID_E
ClientSampleId :



#12 1-chlorooctadecane (SURR)

R.T.: 13.352 min
Delta R.T.: -0.011 min
Response: 3696394
Conc: 27.16 ug/ml