

Data Path : Z:\pestpcbsrv\HPCHEM1\FID_E\Data\FE062824AL\
Data File : FE048924.D
Signal(s) : FID1B.ch
Acq On : 28 Jun 2024 19:21
Operator : YP\AJ
Sample : P3115-13
Misc :
ALS Vial : 14 Sample Multiplier: 1

Instrument :
FID_E
ClientSampleId :
VNJ-325-E2

Integration File: autoint1.e
Quant Time: Jun 29 02:48:17 2024
Quant Method : Z:\pestpcbsrv\HPCHEM1\FID_E\methods\Aliphatic EPH 062124.M
Quant Title : GC Extractables
QLast Update : Thu Jun 20 17:53:58 2024
Response via : Initial Calibration
Integrator: ChemStation

Volume Inj. : 1 ul
Signal Phase : Rxi-1ms
Signal Info : 20M x 0.18mm x 0.18um

Compound	R.T.	Response	Conc Units
----------	------	----------	------------

System Monitoring Compounds

Target Compounds

(f)=RT Delta > 1/2 Window

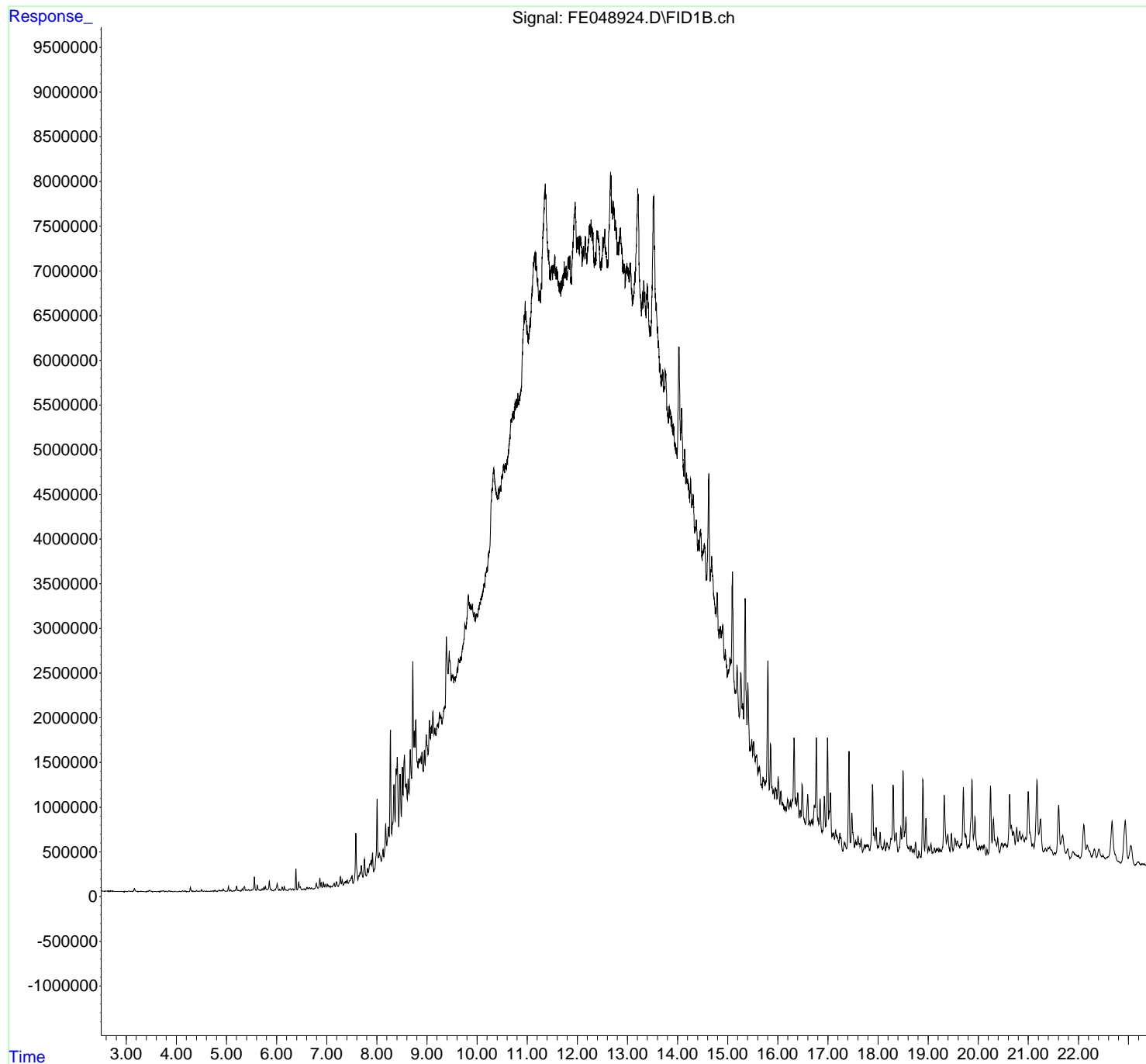
(m)=manual int.

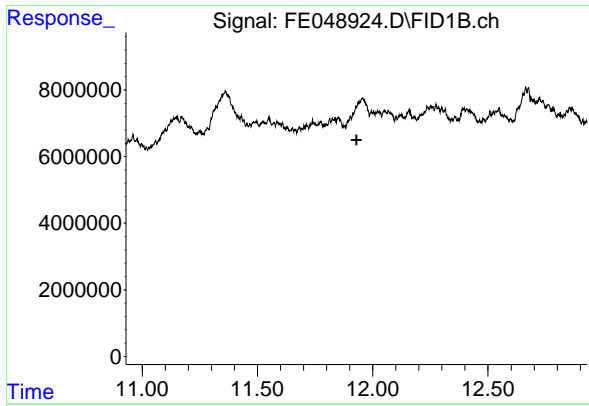
Data Path : Z:\pestpcbsrv\HPCHEM1\FID_E\Data\FE062824AL\
Data File : FE048924.D
Signal(s) : FID1B.ch
Acq On : 28 Jun 2024 19:21
Operator : YP\AJ
Sample : P3115-13
Misc :
ALS Vial : 14 Sample Multiplier: 1

Instrument :
FID_E
ClientSampleId :
VNJ-325-E2

Integration File: autoint1.e
Quant Time: Jun 29 02:48:17 2024
Quant Method : Z:\pestpcbsrv\HPCHEM1\FID_E\methods\Aliphatic EPH 062124.M
Quant Title : GC Extractables
QLast Update : Thu Jun 20 17:53:58 2024
Response via : Initial Calibration
Integrator: ChemStation

Volume Inj. : 1 ul
Signal Phase : Rxi-1ms
Signal Info : 20M x 0.18mm x 0.18um

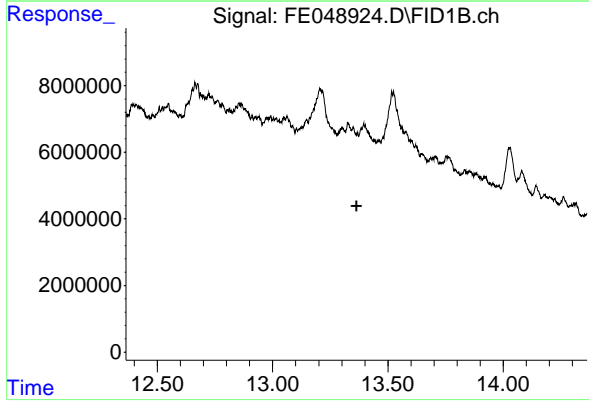




#9 ortho-Terphenyl (SURRE)

R.T.: 0.000 min
Exp R.T. : 11.930 min
Response: 0
Conc: N.D.

Instrument :
FID_E
ClientSampleId :
VNJ-325-E2



#12 1-chlorooctadecane (SURRE)

R.T.: 0.000 min
Exp R.T. : 13.364 min
Response: 0
Conc: N.D.