

Data Path : Z:\pestpcbsrv\HPCHEM1\FID_E\Data\FE063023AL\
 Data File : FE043008.D
 Signal(s) : FID1B.ch
 Acq On : 30 Jun 2023 08:41
 Operator : YP\AJ
 Sample : MECL2
 Misc :
 ALS Vial : 1 Sample Multiplier: 1

Instrument :
 FID_E
 ClientSampleId :

Integration File: autoint1.e
 Quant Time: Jul 01 04:13:58 2023
 Quant Method : Z:\pestpcbsrv\HPCHEM1\FID_E\methods\Aliphatic EPH 062123.M
 Quant Title : GC Extractables
 QLast Update : Wed Jun 21 11:03:59 2023
 Response via : Initial Calibration
 Integrator: ChemStation

Volume Inj. : 1 ul
 Signal Phase : Rxi-1ms
 Signal Info : 20M x 0.18mm x 0.18um

Compound	R.T.	Response	Conc Units

System Monitoring Compounds			
Target Compounds			
10) T n-Eicosane (C20)	12.875	299194	1.885 ug/ml
11) T n-Heneicosane (C21)	13.501	186064	1.203 ug/ml
13) T n-Docosane (C22)	14.091	181468	1.191 ug/ml
14) T n-Tetracosane (C24)	15.176	428971	2.891 ug/ml
15) T n-Hexacosane (C26)	16.220	85583	0.599 ug/ml

(f)=RT Delta > 1/2 Window

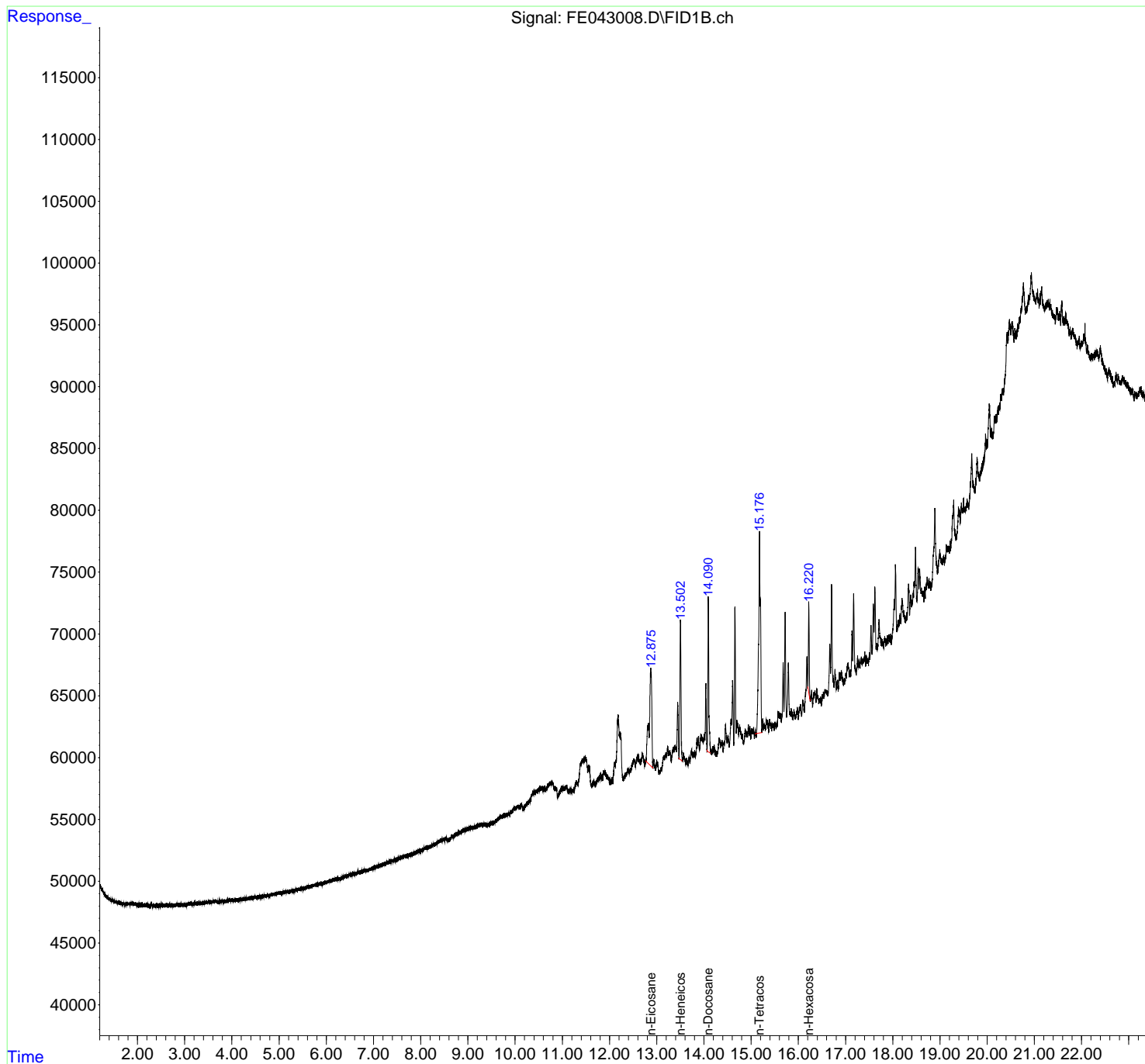
(m)=manual int.

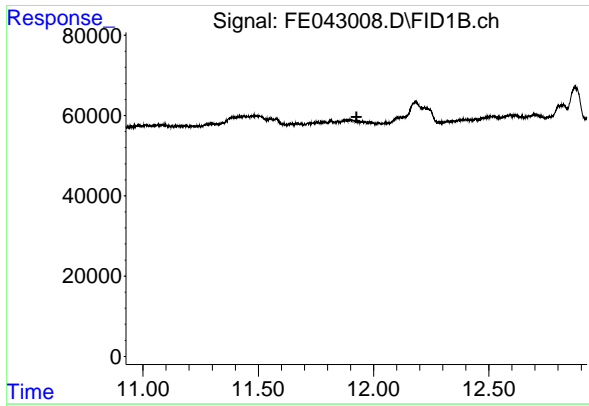
Data Path : Z:\pestpcbsrv\HPCHEM1\FID_E\Data\FE063023AL\
Data File : FE043008.D
Signal(s) : FID1B.ch
Acq On : 30 Jun 2023 08:41
Operator : YP\AJ
Sample : MECL2
Misc :
ALS Vial : 1 Sample Multiplier: 1

Instrument :
FID_E
ClientSampleId :

Integration File: autoint1.e
Quant Time: Jul 01 04:13:58 2023
Quant Method : Z:\pestpcbsrv\HPCHEM1\FID_E\methods\Aliphatic EPH 062123.M
Quant Title : GC Extractables
QLast Update : Wed Jun 21 11:03:59 2023
Response via : Initial Calibration
Integrator: ChemStation

Volume Inj. : 1 ul
Signal Phase : Rxi-1ms
Signal Info : 20M x 0.18mm x 0.18um

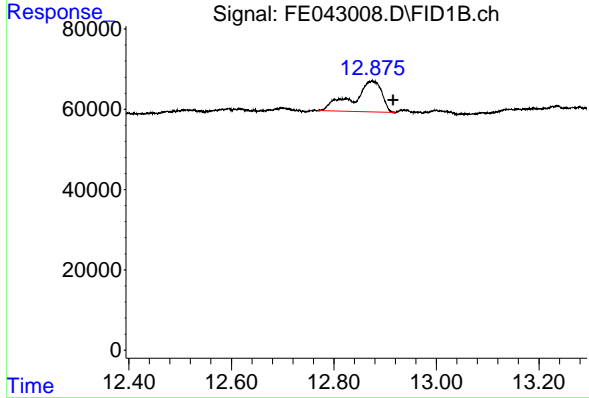




#9 ortho-Terphenyl (SURR)

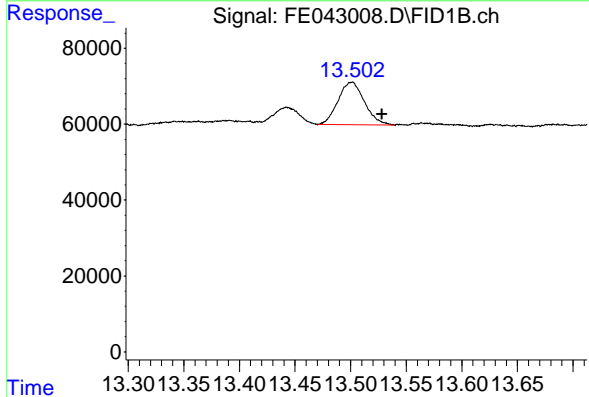
R.T.: 0.000 min
 Exp R.T.: 11.926 min
 Response: 0
 Conc: N.D.

Instrument : FID_E
 ClientSampleId :



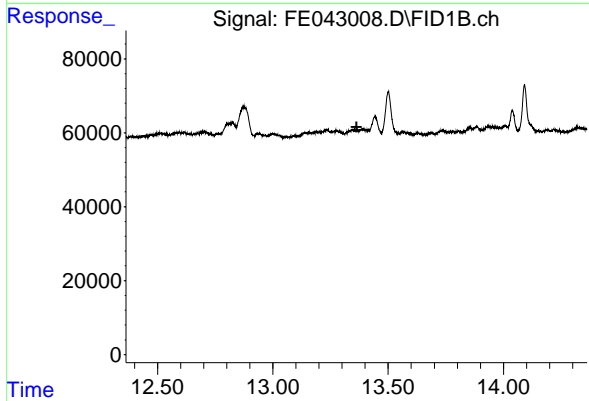
#10 n-Eicosane (C20)

R.T.: 12.875 min
 Delta R.T.: -0.042 min
 Response: 299194
 Conc: 1.89 ug/ml



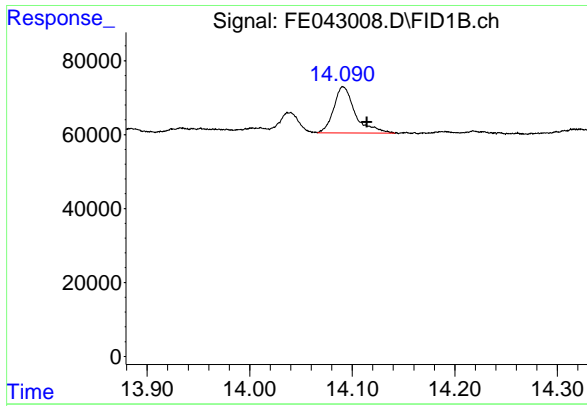
#11 n-Heneicosane (C21)

R.T.: 13.501 min
 Delta R.T.: -0.027 min
 Response: 186064
 Conc: 1.20 ug/ml



#12 1-chlorooctadecane (SURR)

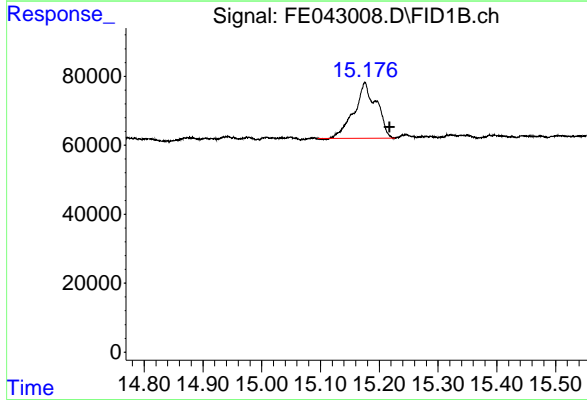
R.T.: 0.000 min
 Exp R.T.: 13.363 min
 Response: 0
 Conc: N.D.



#13 n-Docosane (C22)

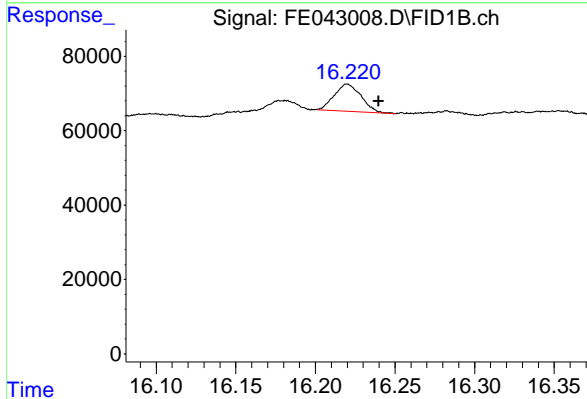
R.T.: 14.091 min
 Delta R.T.: -0.023 min
 Response: 181468
 Conc: 1.19 ug/ml

Instrument :
 FID_E
 ClientSampleId :



#14 n-Tetracosane (C24)

R.T.: 15.176 min
 Delta R.T.: -0.042 min
 Response: 428971
 Conc: 2.89 ug/ml



#15 n-Hexacosane (C26)

R.T.: 16.220 min
 Delta R.T.: -0.020 min
 Response: 85583
 Conc: 0.60 ug/ml