

Data Path : Z:\pestpcbsrv\HPCHEM1\FID_E\Data\FE063025AL\
 Data File : FE054638.D
 Signal(s) : FID1B.ch
 Acq On : 30 Jun 2025 20:29
 Operator : YP\AJ
 Sample : Q2457-02
 Misc :
 ALS Vial : 21 Sample Multiplier: 1

Instrument :
 FID_E
 ClientSampleId :
 OK-2-062725-E2

Integration File: autoint1.e
 Quant Time: Jul 01 06:10:23 2025
 Quant Method : Z:\pestpcbsrv\HPCHEM1\FID_E\methods\Aliphatic EPH 062725.M
 Quant Title : GC Extractables
 QLast Update : Fri Jun 27 15:19:13 2025
 Response via : Initial Calibration
 Integrator: ChemStation

Volume Inj. : 1 ul
 Signal Phase : Rxi-1ms
 Signal Info : 20M x 0.18mm x 0.18um

Compound	R.T.	Response	Conc Units

System Monitoring Compounds			
9) S ortho-Terphenyl (SURR)	12.074	3831694	23.595 ug/ml
Spiked Amount	50.000	Recovery =	47.19%
12) S 1-chlorooctadecane (S...)	13.509	3091172	24.476 ug/ml
Spiked Amount	50.000	Recovery =	48.95%
Target Compounds			
6) T n-Tetradecane (C14)	8.668	57993	0.418 ug/ml
10) T n-Eicosane (C20)	13.046	120977	0.841 ug/ml
11) T n-Heneicosane (C21)	13.714f	133313	0.933 ug/ml
13) T n-Docosane (C22)	14.211	54748	0.383 ug/ml
14) T n-Tetracosane (C24)	15.349	209184	1.439 ug/ml
15) T n-Hexacosane (C26)	16.348	22071	0.153 ug/ml
17) T n-Tricontane (C30)	18.234	528240	3.352 ug/ml
18) T n-Dotriacontane (C32)	19.066	578494	3.576 ug/ml
19) T n-Tetratriacontane (C34)	19.855	321794	2.112 ug/ml
20) T n-Hexatriacontane (C36)	20.592	668328	4.971 ug/ml
21) T n-Octatriacontane (C38)	21.340	290168	2.474 ug/ml
22) T n-Tetracontane (C40)	22.302	134768	1.243 ug/ml

(f)=RT Delta > 1/2 Window

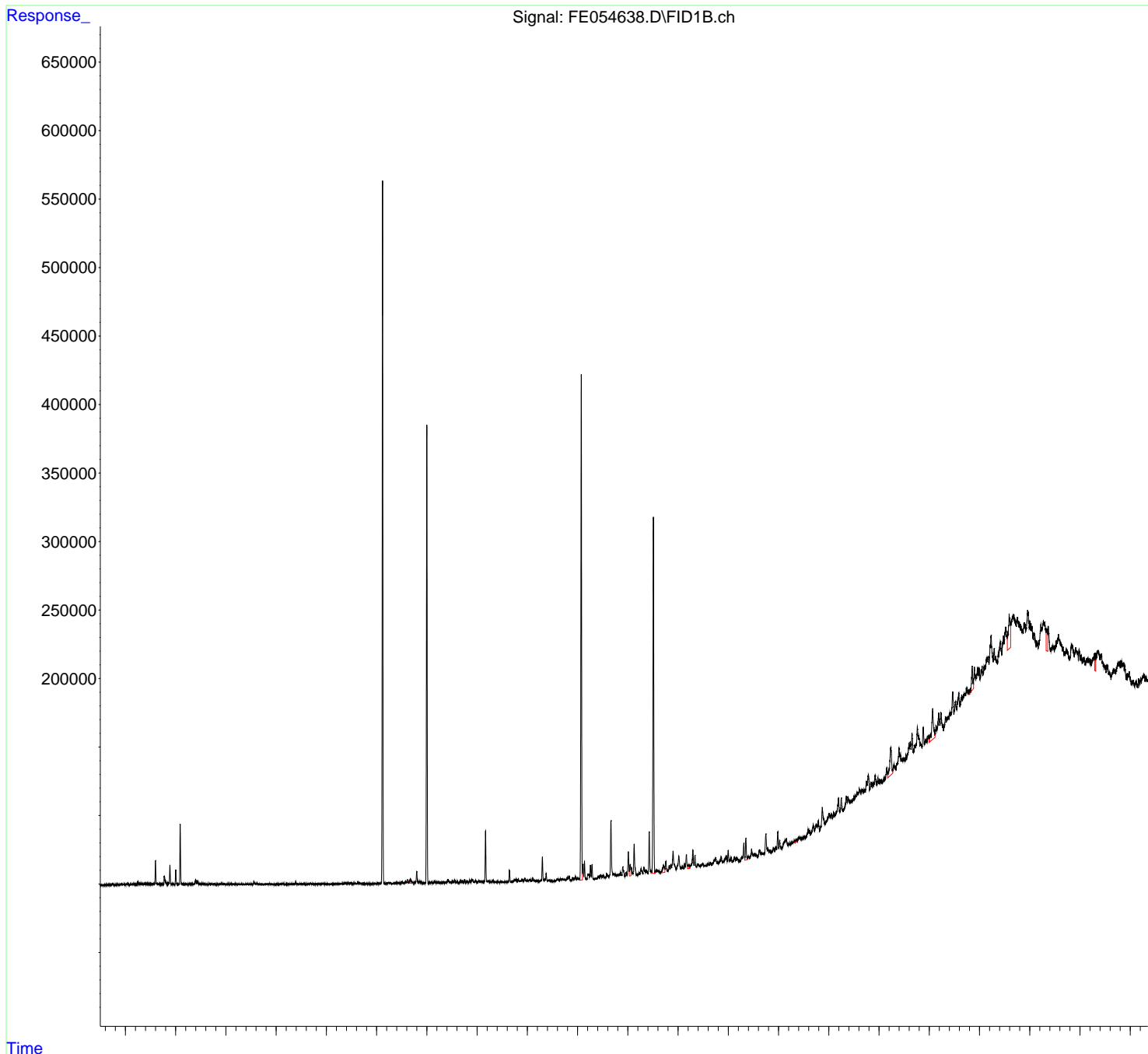
(m)=manual int.

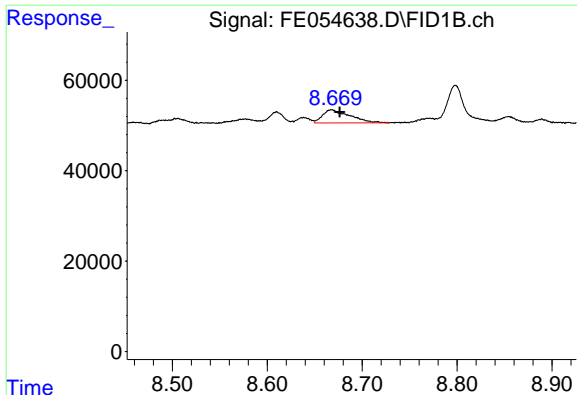
Data Path : Z:\pestpcbsrv\HPCHEM1\FID_E\Data\FE063025AL\
 Data File : FE054638.D
 Signal(s) : FID1B.ch
 Acq On : 30 Jun 2025 20:29
 Operator : YP\AJ
 Sample : Q2457-02
 Misc :
 ALS Vial : 21 Sample Multiplier: 1

Instrument :
 FID_E
 ClientSampleId :
 OK-2-062725-E2

Integration File: autoint1.e
 Quant Time: Jul 01 06:10:23 2025
 Quant Method : Z:\pestpcbsrv\HPCHEM1\FID_E\methods\Aliphatic EPH 062725.M
 Quant Title : GC Extractables
 QLast Update : Fri Jun 27 15:19:13 2025
 Response via : Initial Calibration
 Integrator: ChemStation

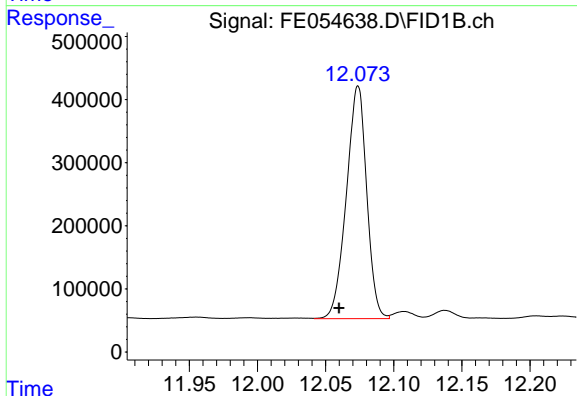
Volume Inj. : 1 ul
 Signal Phase : Rxi-1ms
 Signal Info : 20M x 0.18mm x 0.18um



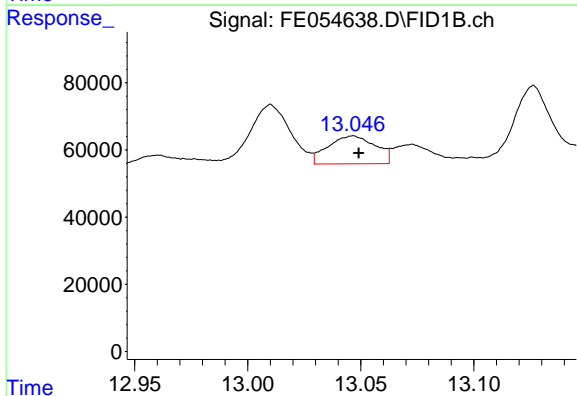


#6 n-Tetradecane (C14)
 R.T.: 8.668 min
 Delta R.T.: -0.008 min
 Response: 57993
 Conc: 0.42 ug/ml

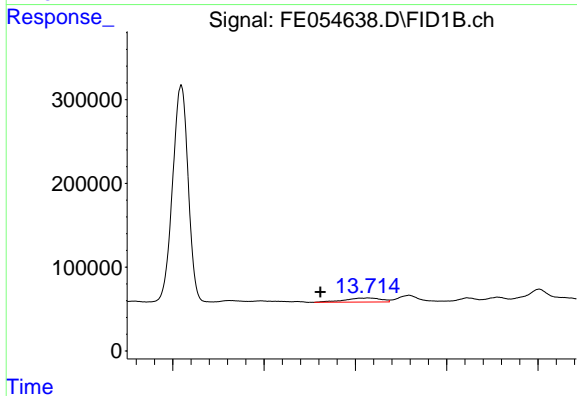
Instrument :
 FID_E
 ClientSampleId :
 OK-2-062725-E2



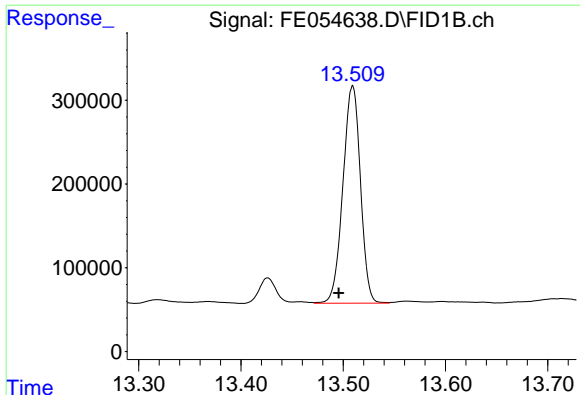
#9 ortho-Terphenyl (SURR)
 R.T.: 12.074 min
 Delta R.T.: 0.014 min
 Response: 3831694
 Conc: 23.60 ug/ml



#10 n-Eicosane (C20)
 R.T.: 13.046 min
 Delta R.T.: -0.003 min
 Response: 120977
 Conc: 0.84 ug/ml



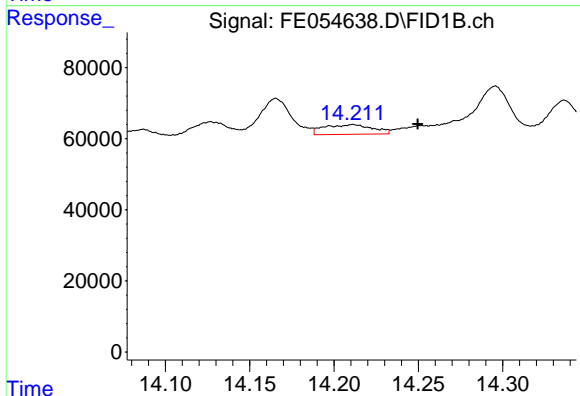
#11 n-Heneicosane (C21)
 R.T.: 13.714 min
 Delta R.T.: 0.052 min
 Response: 133313
 Conc: 0.93 ug/ml



#12 1-chlorooctadecane (SURR)

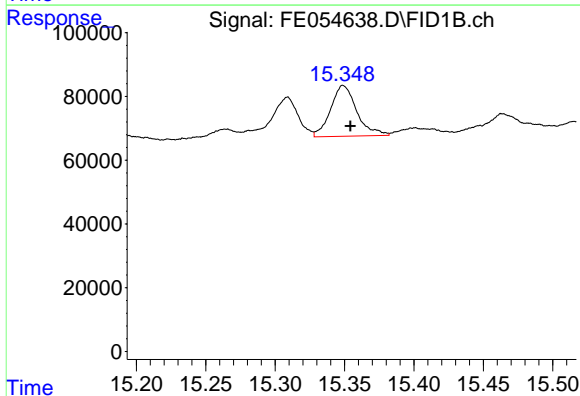
R.T.: 13.509 min
 Delta R.T.: 0.014 min
 Response: 3091172
 Conc: 24.48 ug/ml

Instrument :
 FID_E
 ClientSampleId :
 OK-2-062725-E2



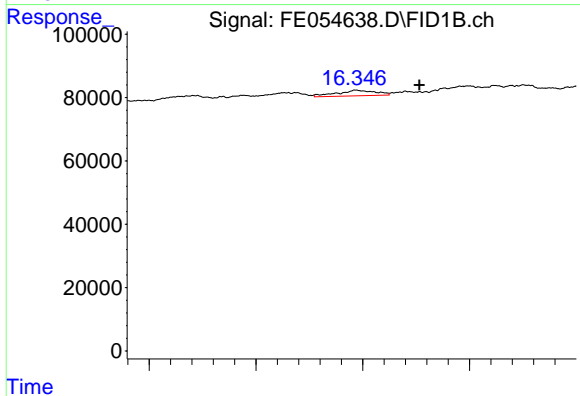
#13 n-Docosane (C22)

R.T.: 14.211 min
 Delta R.T.: -0.038 min
 Response: 54748
 Conc: 0.38 ug/ml



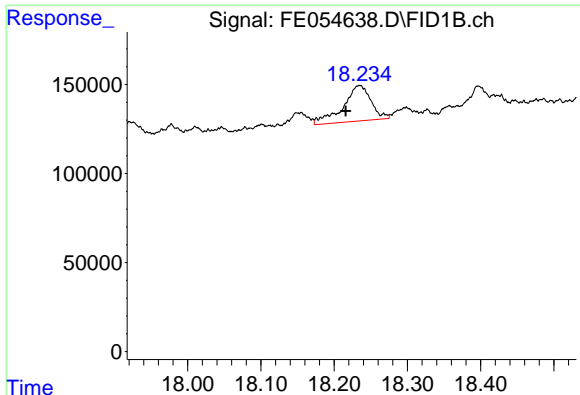
#14 n-Tetracosane (C24)

R.T.: 15.349 min
 Delta R.T.: -0.005 min
 Response: 209184
 Conc: 1.44 ug/ml



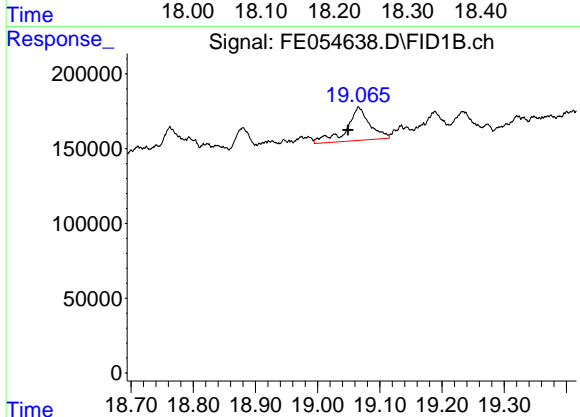
#15 n-Hexacosane (C26)

R.T.: 16.348 min
 Delta R.T.: -0.028 min
 Response: 22071
 Conc: 0.15 ug/ml

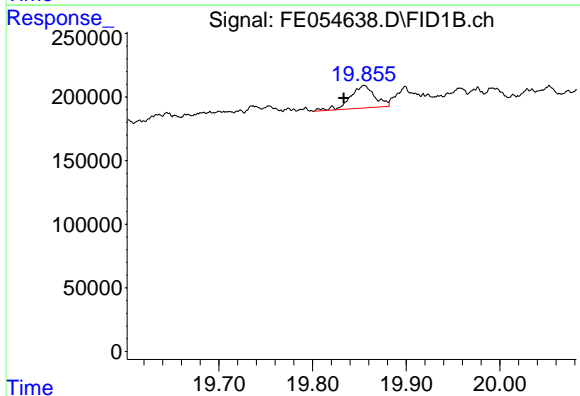


#17 n-Tricontane (C30)
 R.T.: 18.234 min
 Delta R.T.: 0.018 min
 Response: 528240
 Conc: 3.35 ug/ml

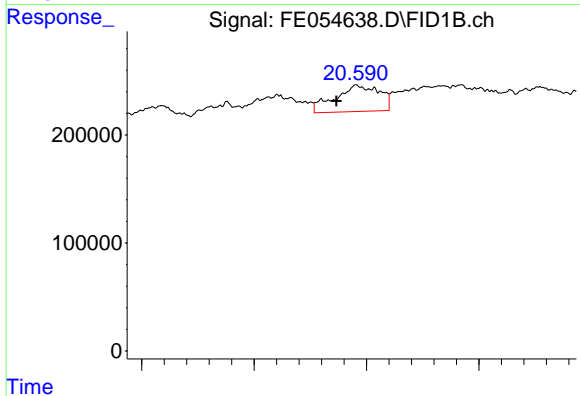
Instrument :
 FID_E
 ClientSampleId :
 OK-2-062725-E2



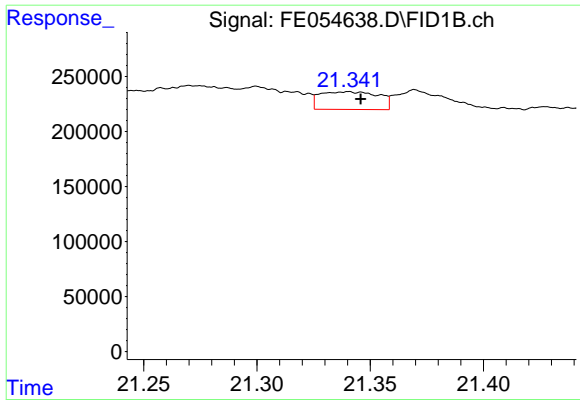
#18 n-Dotriacontane (C32)
 R.T.: 19.066 min
 Delta R.T.: 0.017 min
 Response: 578494
 Conc: 3.58 ug/ml



#19 n-Tetratriacontane (C34)
 R.T.: 19.855 min
 Delta R.T.: 0.022 min
 Response: 321794
 Conc: 2.11 ug/ml



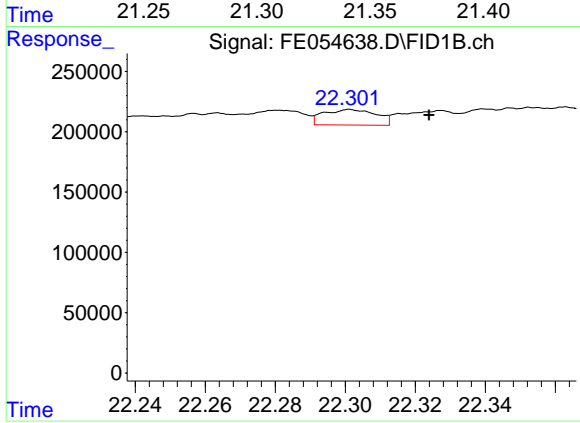
#20 n-Hexatriacontane (C36)
 R.T.: 20.592 min
 Delta R.T.: 0.018 min
 Response: 668328
 Conc: 4.97 ug/ml



#21 n-Octatriacontane (C38)

R.T.: 21.340 min
 Delta R.T.: -0.005 min
 Response: 290168
 Conc: 2.47 ug/ml

Instrument :
 FID_E
 ClientSampleId :
 OK-2-062725-E2



#22 n-Tetracontane (C40)

R.T.: 22.302 min
 Delta R.T.: -0.022 min
 Response: 134768
 Conc: 1.24 ug/ml