

Data Path : Z:\pestpcbsrv\HPCHEM1\FID_E\Data\FE070522AL\
 Data File : FE036359.D
 Signal(s) : FID1B.ch
 Acq On : 05 Jul 2022 12:55
 Operator : YP\AJ
 Sample : PB145960BL
 Misc :
 ALS Vial : 5 Sample Multiplier: 1

Instrument :
 FID_E
 ClientSampleId :

Integration File: autoint1.e
 Quant Time: Jul 06 03:47:53 2022
 Quant Method : Z:\pestpcbsrv\HPCHEM1\FID_E\methods\Aliphatic EPH 062022.M
 Quant Title : GC Extractables
 QLast Update : Tue Jun 21 03:08:45 2022
 Response via : Initial Calibration
 Integrator: ChemStation

Volume Inj. : 1 ul
 Signal Phase : Rxi-1ms
 Signal Info : 20M x 0.18mm x 0.18um

Compound	R.T.	Response	Conc Units

System Monitoring Compounds			
12) S 1-chlorooctadecane (S...	13.311	5121853	33.083 ug/ml
Spiked Amount	50.000	Recovery	= 66.17%

Target Compounds

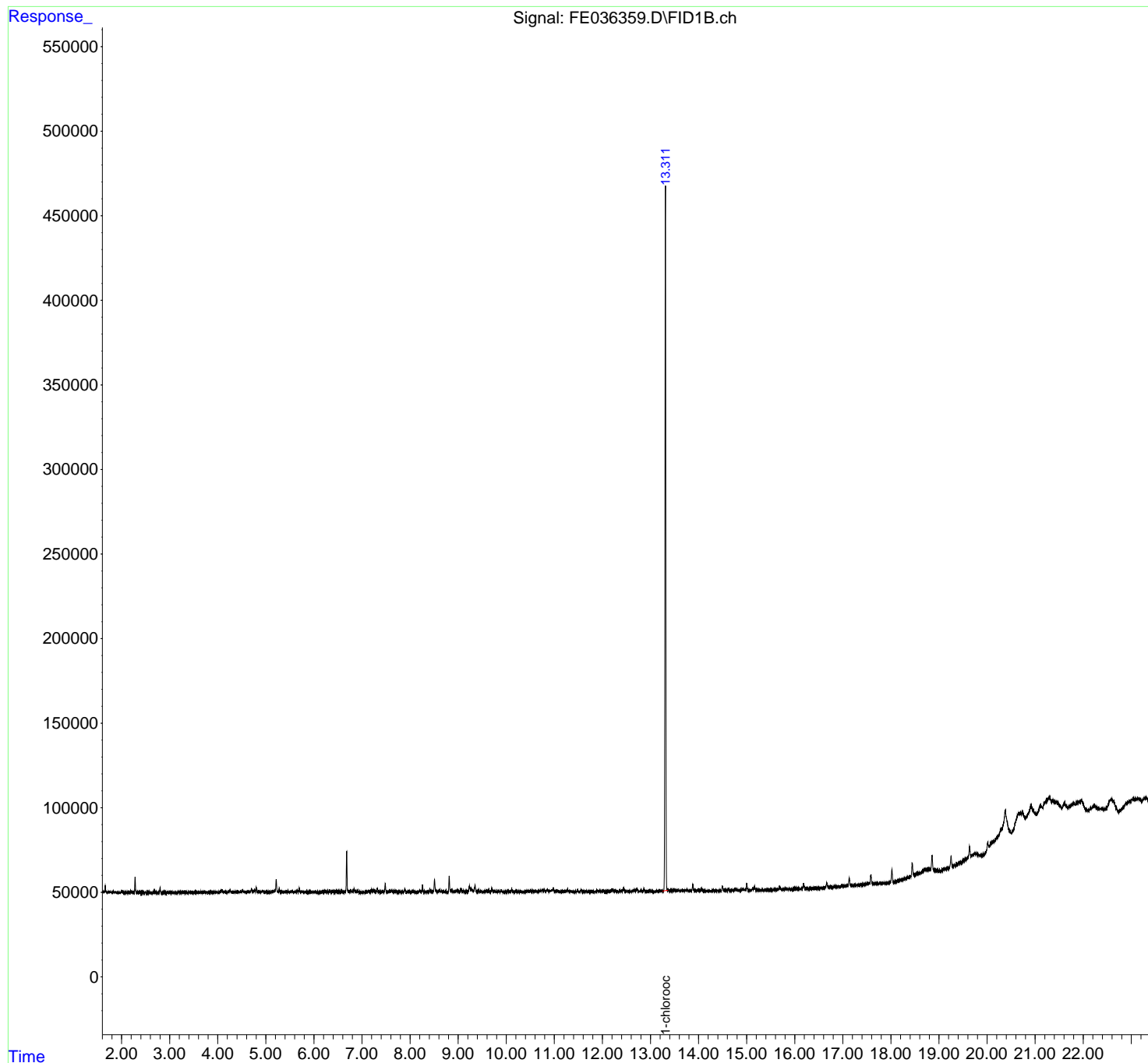
(f)=RT Delta > 1/2 Window (m)=manual int.

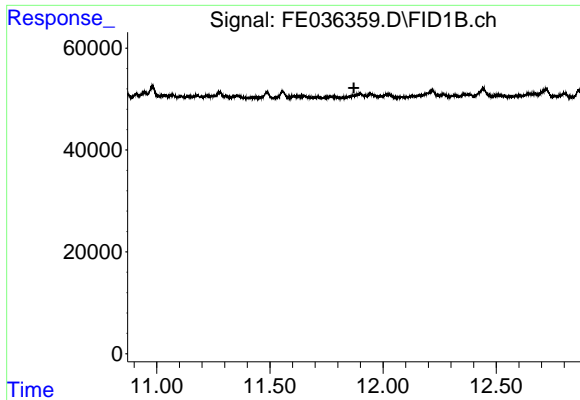
Data Path : Z:\pestpcbsrv\HPCHEM1\FID_E\Data\FE070522AL\
Data File : FE036359.D
Signal(s) : FID1B.ch
Acq On : 05 Jul 2022 12:55
Operator : YP\AJ
Sample : PB145960BL
Misc :
ALS Vial : 5 Sample Multiplier: 1

Instrument :
FID_E
ClientSampleId :

Integration File: autoint1.e
Quant Time: Jul 06 03:47:53 2022
Quant Method : Z:\pestpcbsrv\HPCHEM1\FID_E\methods\Aliphatic EPH 062022.M
Quant Title : GC Extractables
QLast Update : Tue Jun 21 03:08:45 2022
Response via : Initial Calibration
Integrator: ChemStation

Volume Inj. : 1 ul
Signal Phase : Rxi-1ms
Signal Info : 20M x 0.18mm x 0.18um

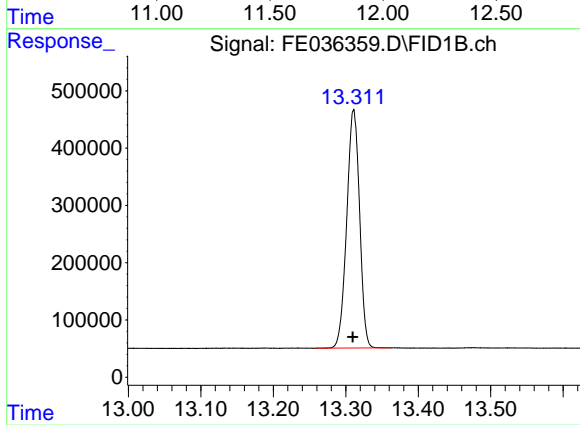




#9 ortho-Terphenyl (SURR)

R.T.: 0.000 min
Exp R.T.: 11.871 min
Response: 0
Conc: N.D.

Instrument :
FID_E
ClientSampleId :



#12 1-chlorooctadecane (SURR)

R.T.: 13.311 min
Delta R.T.: 0.001 min
Response: 5121853
Conc: 33.08 ug/ml