

Data Path : Z:\pestpcbsrv\HPCHEM1\FID\_E\Data\FE070722AL\  
 Data File : FE036421.D  
 Signal(s) : FID1B.ch  
 Acq On : 07 Jul 2022 13:47  
 Operator : YP\AJ  
 Sample : N3584-02DL 5X  
 Misc :  
 ALS Vial : 9 Sample Multiplier: 1

Integration File: autoint1.e  
 Quant Time: Jul 08 03:50:40 2022  
 Quant Method : Z:\pestpcbsrv\HPCHEM1\FID\_E\methods\Aliphatic EPH 062022.M  
 Quant Title : GC Extractables  
 QLast Update : Tue Jun 21 03:08:45 2022  
 Response via : Initial Calibration  
 Integrator: ChemStation

Volume Inj. : 1 ul  
 Signal Phase : Rxi-1ms  
 Signal Info : 20M x 0.18mm x 0.18um

Compound	R.T.	Response	Conc Units
-----			
System Monitoring Compounds			
9) S ortho-Terphenyl (SURR)	11.867	860890	4.309 ug/ml
Spiked Amount	50.000	Recovery =	8.62%
12) S 1-chlorooctadecane (S...	13.306	714105	4.613 ug/ml
Spiked Amount	50.000	Recovery =	9.23%

Target Compounds

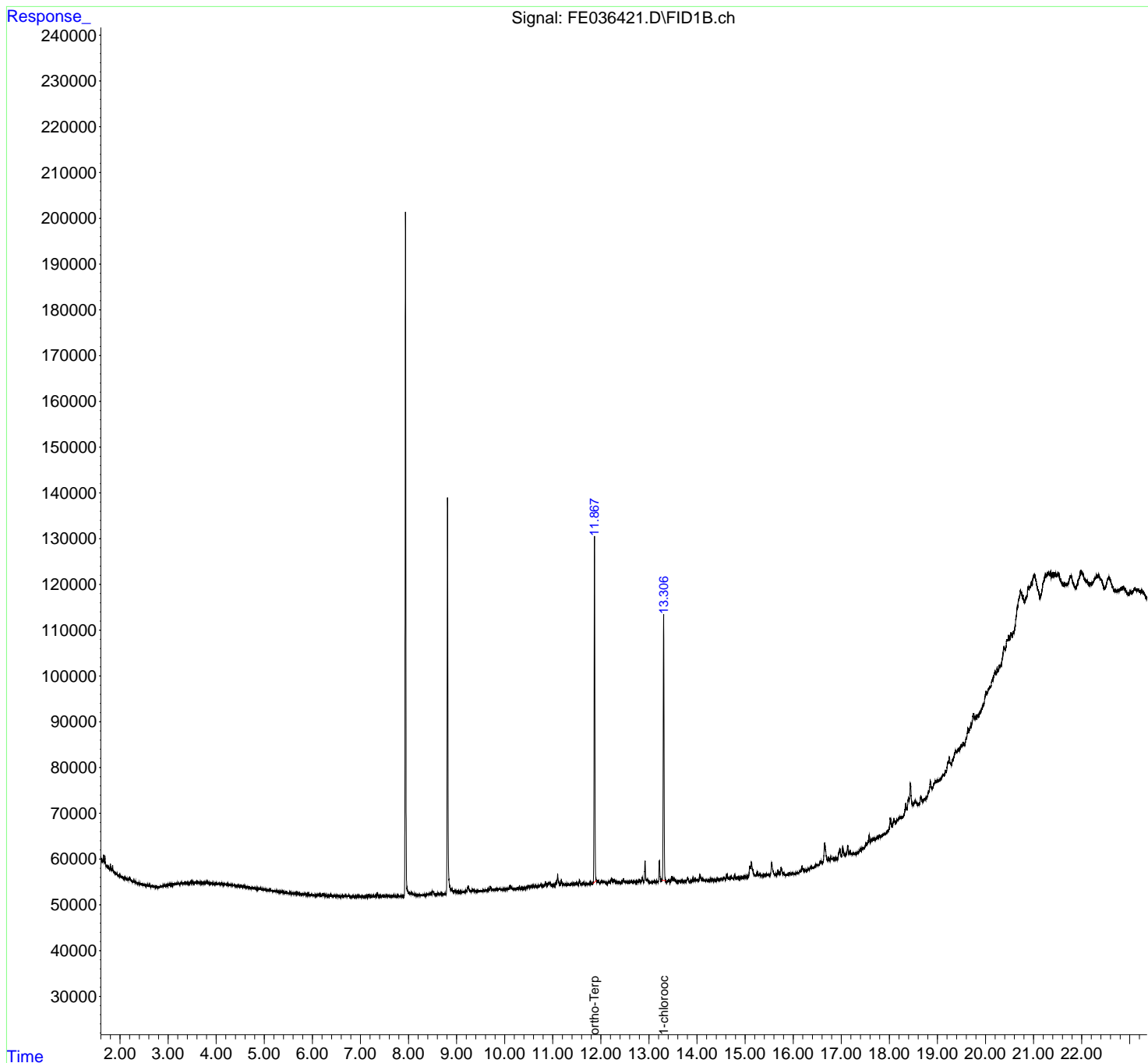
(f)=RT Delta > 1/2 Window

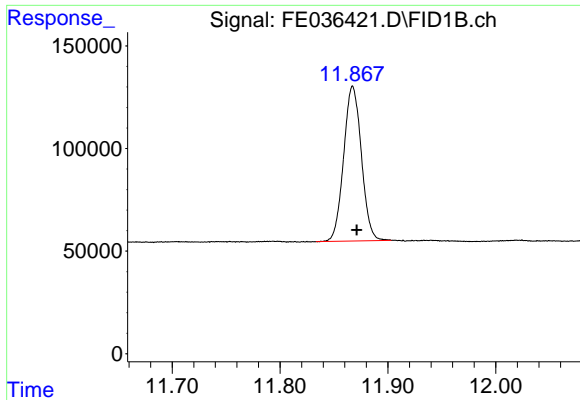
(m)=manual int.

Data Path : Z:\pestpcbsrv\HPCHEM1\FID\_E\Data\FE070722AL\  
Data File : FE036421.D  
Signal(s) : FID1B.ch  
Acq On : 07 Jul 2022 13:47  
Operator : YP\AJ  
Sample : N3584-02DL 5X  
Misc :  
ALS Vial : 9 Sample Multiplier: 1

Integration File: autoint1.e  
Quant Time: Jul 08 03:50:40 2022  
Quant Method : Z:\pestpcbsrv\HPCHEM1\FID\_E\methods\Aliphatic EPH 062022.M  
Quant Title : GC Extractables  
QLast Update : Tue Jun 21 03:08:45 2022  
Response via : Initial Calibration  
Integrator: ChemStation

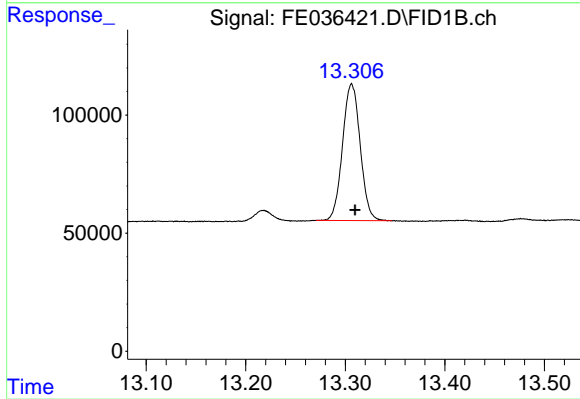
Volume Inj. : 1 ul  
Signal Phase : Rxi-1ms  
Signal Info : 20M x 0.18mm x 0.18um





#9 ortho-Terphenyl (SURR)

R.T.: 11.867 min  
Delta R.T.: -0.004 min  
Response: 860890  
Conc: 4.31 ug/ml



#12 1-chlorooctadecane (SURR)

R.T.: 13.306 min  
Delta R.T.: -0.003 min  
Response: 714105  
Conc: 4.61 ug/ml