

Data Path : Z:\pestpcbsrv\HPCHEM1\FID_E\Data\FE070918AL\
 Data File : FE028131.D
 Signal(s) : FID1B.CH
 Acq On : 09 Jul 2018 13:23
 Operator : AJ\MA
 Sample : J3881-03
 Misc :
 ALS Vial : 5 Sample Multiplier: 1

Integration File: autoint1.e
 Quant Time: Jul 09 14:11:16 2018
 Quant Method : Z:\pestpcbsrv\HPCHEM1\FID_E\methods\Alaphatic EPH 062918.M
 Quant Title : GC Extractables
 QLast Update : Fri Jun 29 22:35:33 2018
 Response via : Initial Calibration
 Integrator: ChemStation 6890 Scale Mode: Large solvent peaks clipped

Volume Inj. : 1 ul
 Signal Phase : Rxi-lms
 Signal Info : 20M x 0.18mm x 0.18um

Compound	R.T.	Response	Conc Units

System Monitoring Compounds			
12) S 1-chlorooctadecane (S...	13.366	3350721	16.858 ug/ml
Spiked Amount 50.000		Recovery =	33.72%
Target Compounds			
16) T n-Octacosane (C28)	17.203	301942	1.406 ug/ml
17) T n-Tricontane (C30)	18.095	454630	2.291 ug/ml
18) T n-Dotriacontane (C32)	18.930	364538	1.991 ug/ml

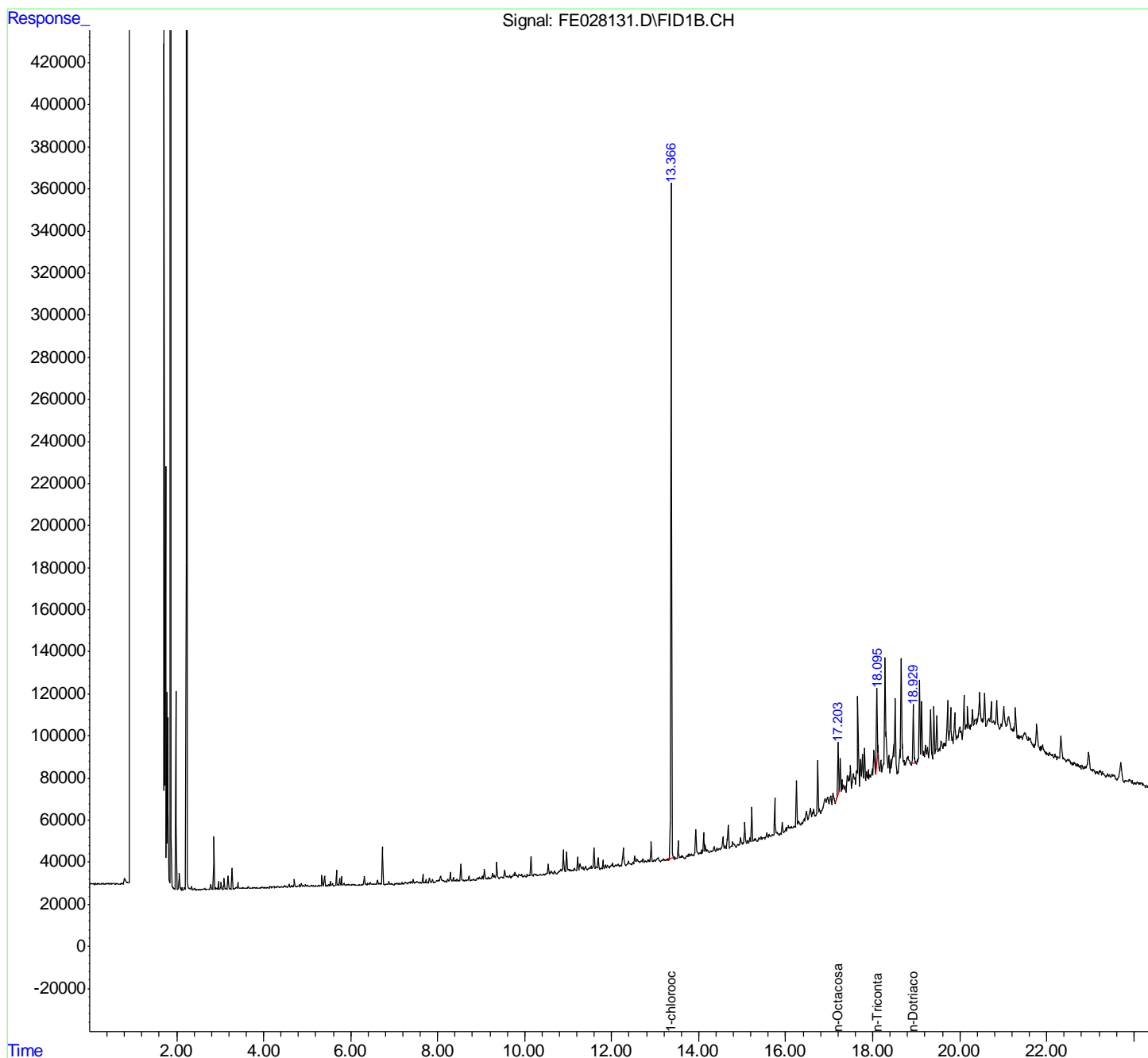
(f)=RT Delta > 1/2 Window

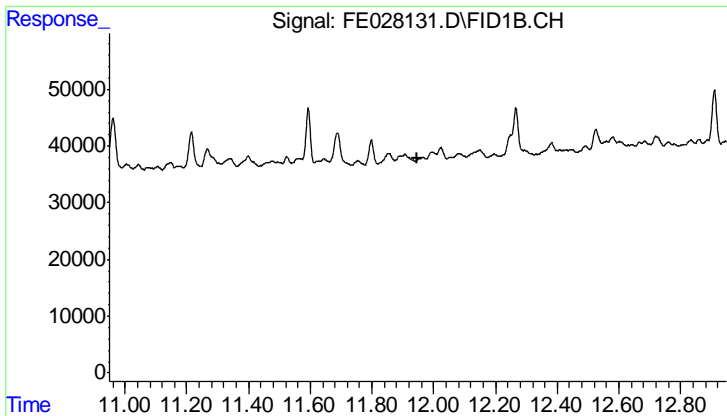
(m)=manual int.

Data Path : Z:\pestpcbsrv\HPCHEM1\FID_E\Data\FE070918AL\
 Data File : FE028131.D
 Signal(s) : FID1B.CH
 Acq On : 09 Jul 2018 13:23
 Operator : AJ\MA
 Sample : J3881-03
 Misc :
 ALS Vial : 5 Sample Multiplier: 1

Integration File: autoint1.e
 Quant Time: Jul 09 14:11:16 2018
 Quant Method : Z:\pestpcbsrv\HPCHEM1\FID_E\methods\Alaphatic EPH 062918.M
 Quant Title : GC Extractables
 QLast Update : Fri Jun 29 22:35:33 2018
 Response via : Initial Calibration
 Integrator: ChemStation 6890 Scale Mode: Large solvent peaks clipped

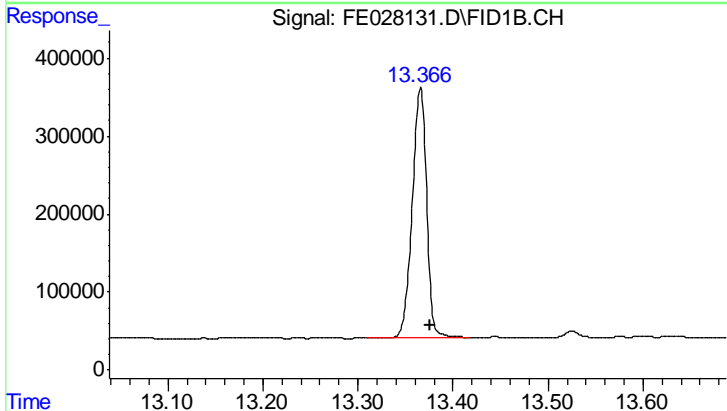
Volume Inj. : 1 ul
 Signal Phase : Rxi-lms
 Signal Info : 20M x 0.18mm x 0.18um





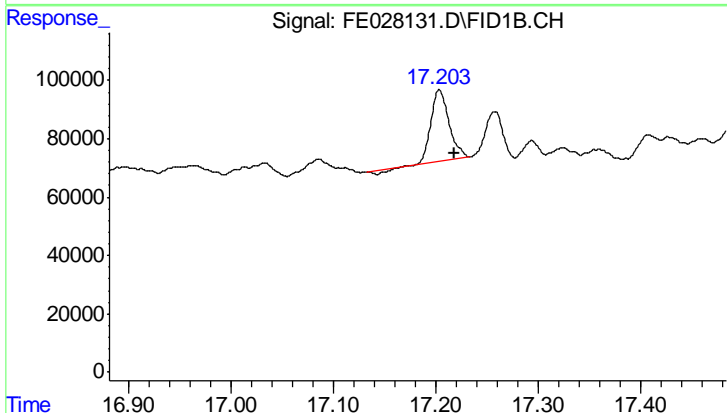
#9 ortho-Terphenyl (SURR)

R.T.: 0.000 min
 Exp R.T.: 11.949 min
 Response: 0
 Conc: N.D.



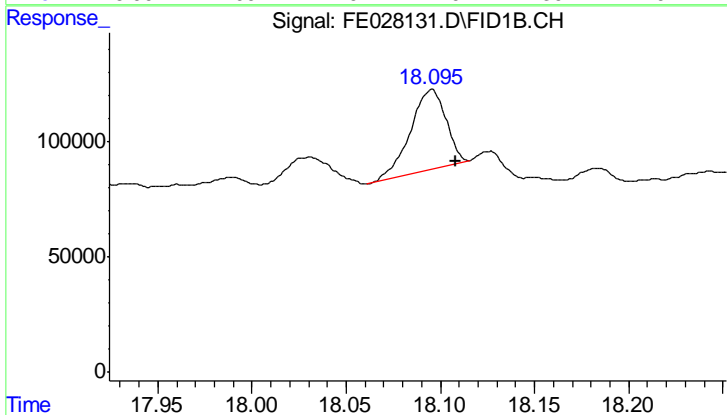
#12 1-chlorooctadecane (SURR)

R.T.: 13.366 min
 Delta R.T.: -0.010 min
 Response: 3350721
 Conc: 16.86 ug/ml



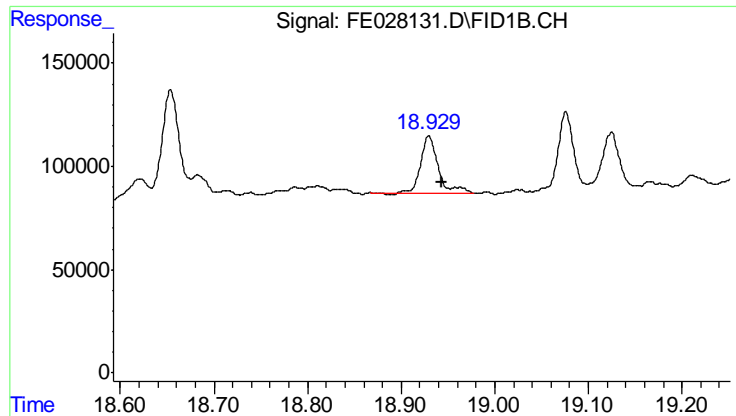
#16 n-Octacosane (C28)

R.T.: 17.203 min
 Delta R.T.: -0.015 min
 Response: 301942
 Conc: 1.41 ug/ml



#17 n-Tricontane (C30)

R.T.: 18.095 min
 Delta R.T.: -0.013 min
 Response: 454630
 Conc: 2.29 ug/ml



#18 n-Dotriacontane (C32)

R.T.: 18.930 min
Delta R.T.: -0.014 min
Response: 364538
Conc: 1.99 ug/ml