

Data Path : Z:\pestpcbsrv\HPCHEM1\FID_E\Data\FE070918AL\
 Data File : FE028146.D
 Signal(s) : FID1B.CH
 Acq On : 09 Jul 2018 22:03
 Operator : AJ\MA
 Sample : 20 PPM ALIPHATIC HC STD
 Misc :
 ALS Vial : 2 Sample Multiplier: 1

Integration File: autoint1.e
 Quant Time: Jul 10 08:34:15 2018
 Quant Method : Z:\pestpcbsrv\HPCHEM1\FID_E\methods\Alaphatic EPH 062918.M
 Quant Title : GC Extractables
 QLast Update : Fri Jun 29 22:35:33 2018
 Response via : Initial Calibration
 Integrator: ChemStation 6890 Scale Mode: Large solvent peaks clipped

Volume Inj. : 1 ul
 Signal Phase : Rxi-1ms
 Signal Info : 20M x 0.18mm x 0.18um

Compound	R.T.	Response	Conc Units

System Monitoring Compounds			
9) S ortho-Terphenyl (SURR)	11.939	4529969	19.094 ug/ml
Spiked Amount	50.000	Recovery	= 38.19%
12) S 1-chlorooctadecane (S...	13.366	3530690	17.763 ug/ml
Spiked Amount	50.000	Recovery	= 35.53%
Target Compounds			
1) T n-Nonane (C9)	3.646	3816095	20.483 ug/ml
2) T n-Decane (C10)	4.708	3945448	20.944 ug/ml
3) T A~Naphthalene (C11.7)	6.315	4502825	21.255 ug/ml
4) T n-Dodecane (C12)	6.732	4126325	21.208 ug/ml
5) T A~2-methylnaphthalene...	7.378	4604358	21.320 ug/ml
6) T n-Tetradecane (C14)	8.539	4313937	20.962 ug/ml
7) T n-Hexadecane (C16)	10.149	4373475	20.107 ug/ml
8) T n-Octadecane (C18)	11.600	4287488	18.845 ug/ml
10) T n-Eicosane (C20)	12.916	4305818	18.174 ug/ml
11) T n-Heneicosane (C21)	13.530	4246670	18.007 ug/ml
13) T n-Docosane (C22)	14.119	4214199	17.799 ug/ml
14) T n-Tetracosane (C24)	15.227	4075303	17.635 ug/ml
15) T n-Hexacosane (C26)	16.251	3896759	17.527 ug/ml
16) T n-Octacosane (C28)	17.205	3787213	17.639 ug/ml
17) T n-Tricontane (C30)	18.095	3602630	18.153 ug/ml
18) T n-Dotriacontane (C32)	18.931	3473807	18.970 ug/ml
19) T n-Tetratriacontane (C34)	19.717	3372958	19.734 ug/ml
20) T n-Hexatriacontane (C36)	20.461	3355227	20.426 ug/ml
21) T n-Octatriacontane (C38)	21.284	3401343	20.669 ug/ml
22) T n-Tetracontane (C40)	22.324	3396242	20.454 ug/ml

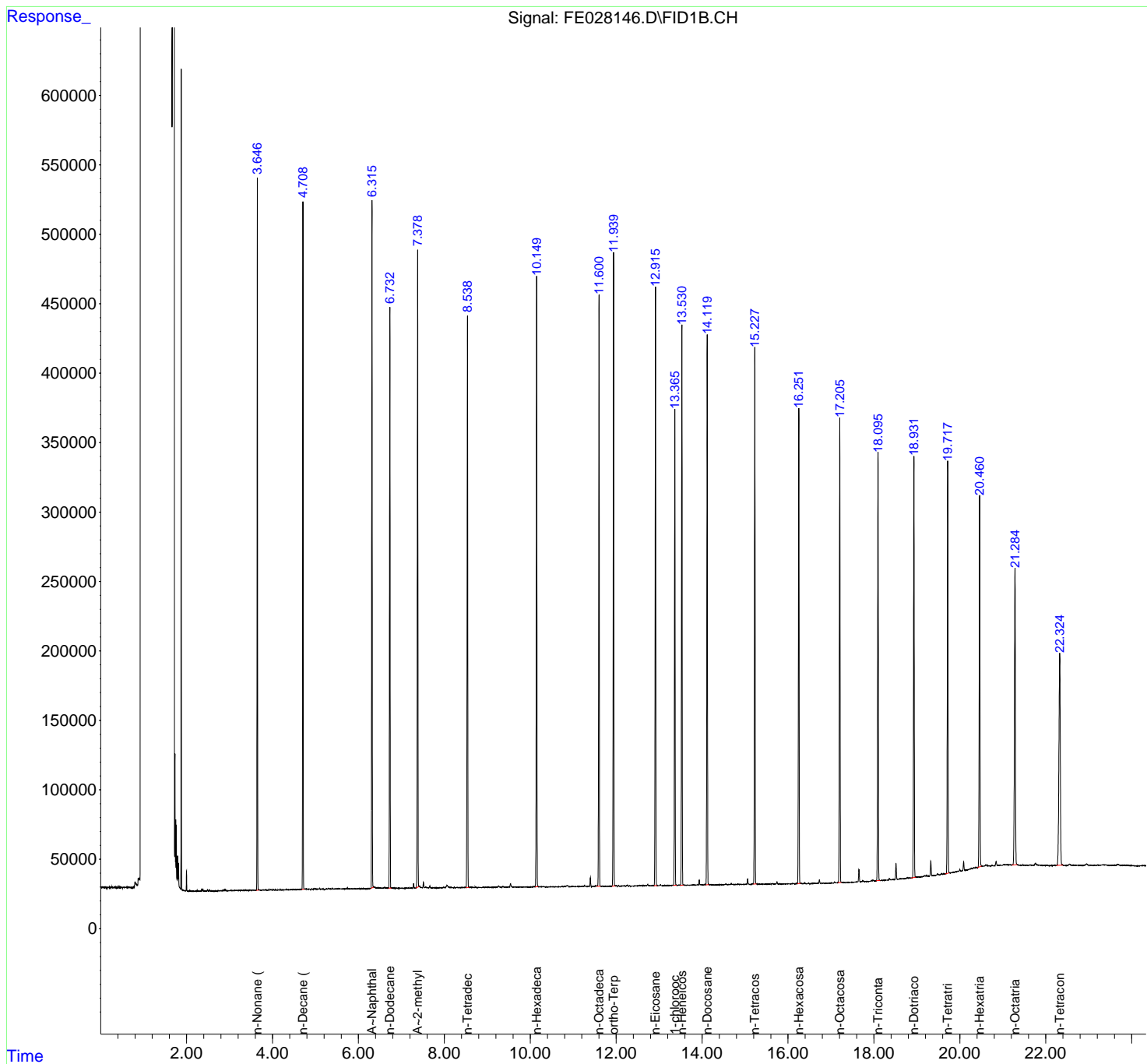
(f)=RT Delta > 1/2 Window

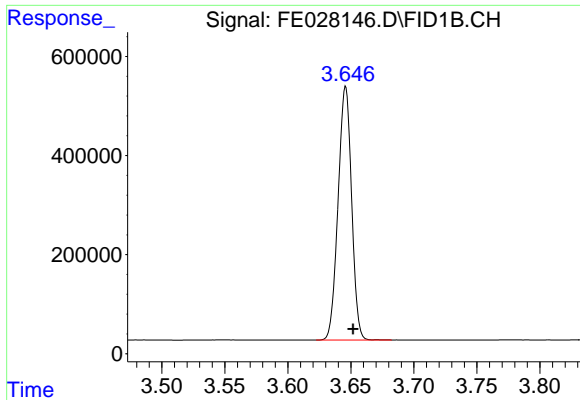
(m)=manual int.

Data Path : Z:\pestpcbsrv\HPCHEM1\FID_E\Data\FE070918AL\
 Data File : FE028146.D
 Signal(s) : FID1B.CH
 Acq On : 09 Jul 2018 22:03
 Operator : AJ\MA
 Sample : 20 PPM ALIPHATIC HC STD
 Misc :
 ALS Vial : 2 Sample Multiplier: 1

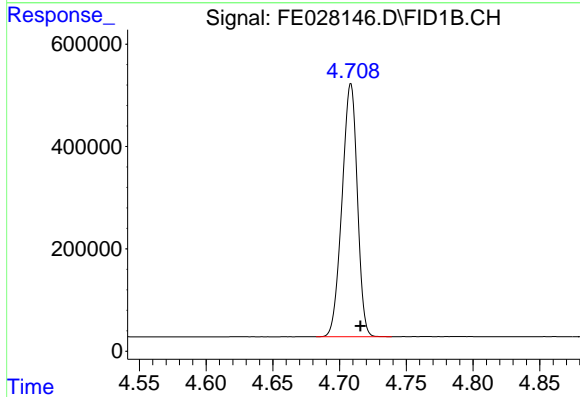
Integration File: autoint1.e
 Quant Time: Jul 10 08:34:15 2018
 Quant Method : Z:\pestpcbsrv\HPCHEM1\FID_E\methods\Alaphatic EPH 062918.M
 Quant Title : GC Extractables
 QLast Update : Fri Jun 29 22:35:33 2018
 Response via : Initial Calibration
 Integrator: ChemStation 6890 Scale Mode: Large solvent peaks clipped

Volume Inj. : 1 ul
 Signal Phase : Rxi-1ms
 Signal Info : 20M x 0.18mm x 0.18um

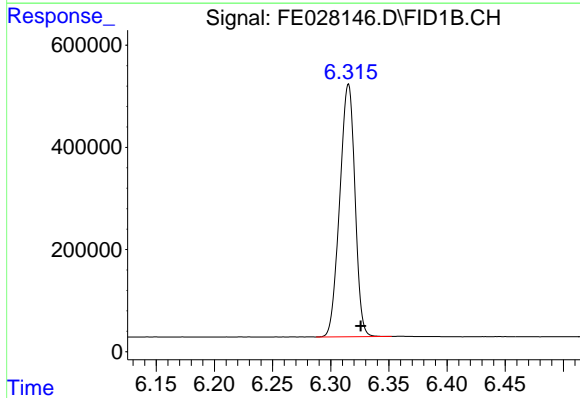




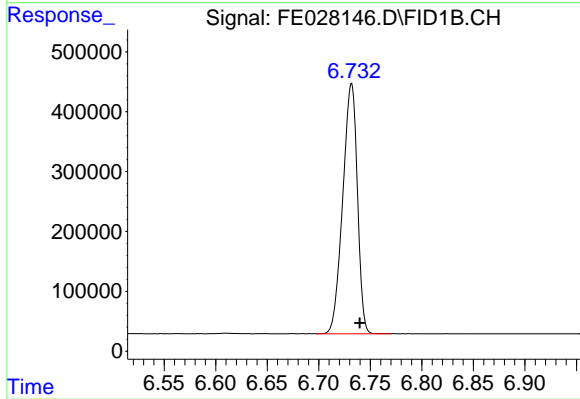
#1 n-Nonane (C9)
R.T.: 3.646 min
Delta R.T.: -0.006 min
Response: 3816095
Conc: 20.48 ug/ml



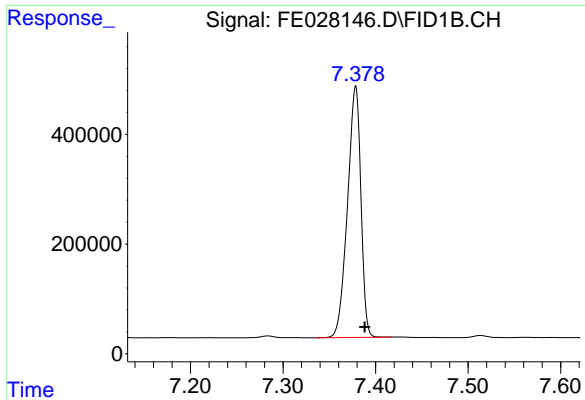
#2 n-Decane (C10)
R.T.: 4.708 min
Delta R.T.: -0.007 min
Response: 3945448
Conc: 20.94 ug/ml



#3 A~Naphthalene (C11.7)
R.T.: 6.315 min
Delta R.T.: -0.010 min
Response: 4502825
Conc: 21.26 ug/ml

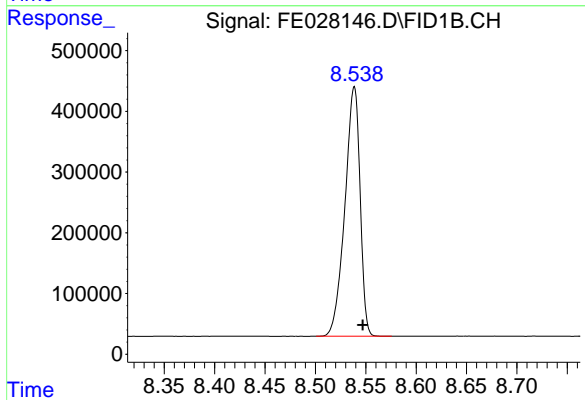


#4 n-Dodecane (C12)
R.T.: 6.732 min
Delta R.T.: -0.008 min
Response: 4126325
Conc: 21.21 ug/ml



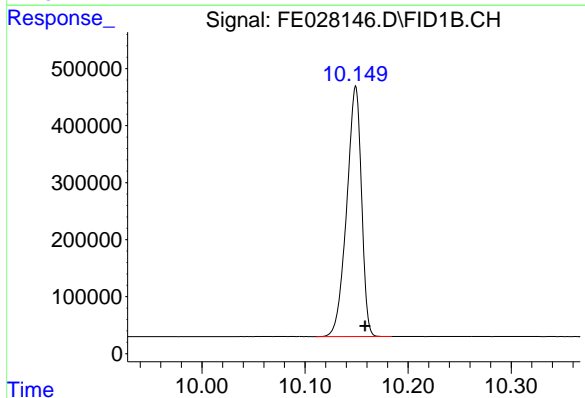
#5 A~2-methylnaphthalene (C12.89)

R.T.: 7.378 min
Delta R.T.: -0.010 min
Response: 4604358
Conc: 21.32 ug/ml



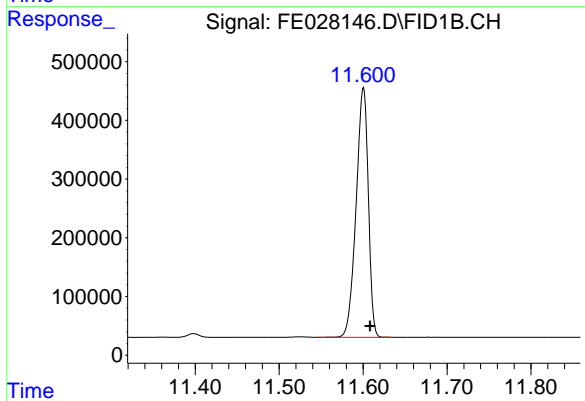
#6 n-Tetradecane (C14)

R.T.: 8.539 min
Delta R.T.: -0.008 min
Response: 4313937
Conc: 20.96 ug/ml



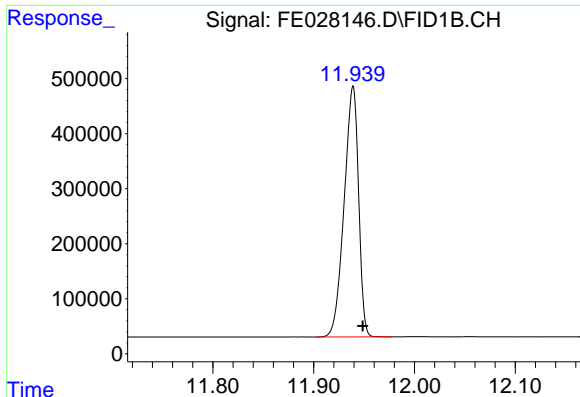
#7 n-Hexadecane (C16)

R.T.: 10.149 min
Delta R.T.: -0.009 min
Response: 4373475
Conc: 20.11 ug/ml



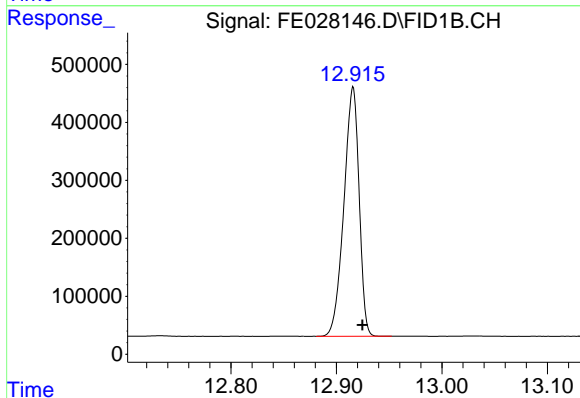
#8 n-Octadecane (C18)

R.T.: 11.600 min
Delta R.T.: -0.008 min
Response: 4287488
Conc: 18.85 ug/ml



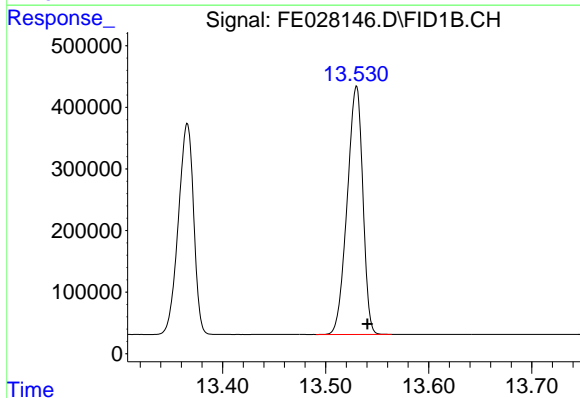
#9 ortho-Terphenyl (SURR)

R.T.: 11.939 min
Delta R.T.: -0.010 min
Response: 4529969
Conc: 19.09 ug/ml



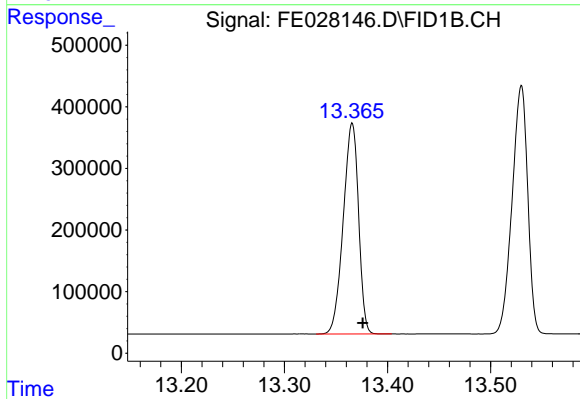
#10 n-Eicosane (C20)

R.T.: 12.916 min
Delta R.T.: -0.009 min
Response: 4305818
Conc: 18.17 ug/ml



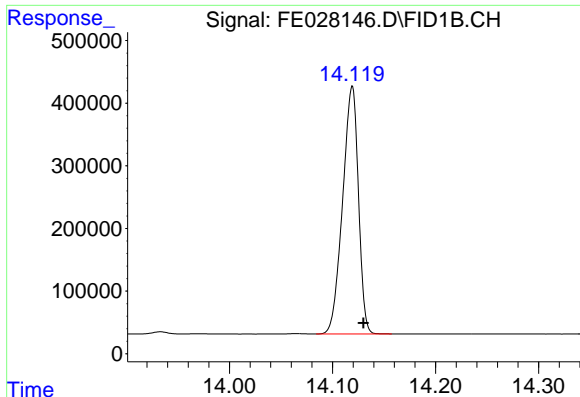
#11 n-Heneicosane (C21)

R.T.: 13.530 min
Delta R.T.: -0.011 min
Response: 4246670
Conc: 18.01 ug/ml



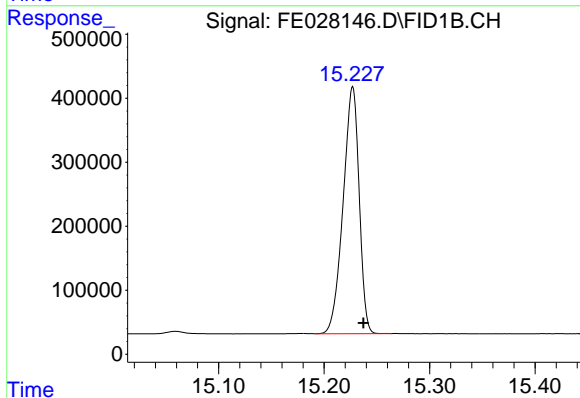
#12 1-chlorooctadecane (SURR)

R.T.: 13.366 min
Delta R.T.: -0.010 min
Response: 3530690
Conc: 17.76 ug/ml



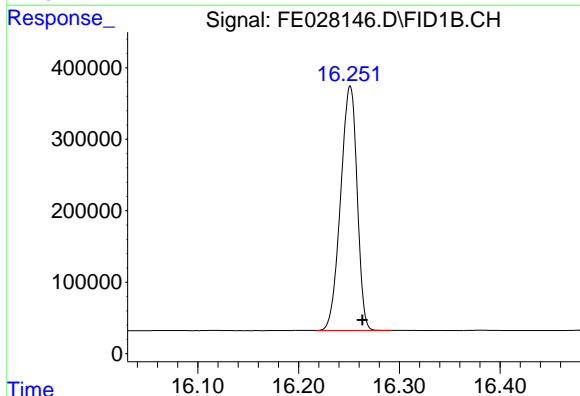
#13 n-Docosane (C22)

R.T.: 14.119 min
Delta R.T.: -0.011 min
Response: 4214199
Conc: 17.80 ug/ml



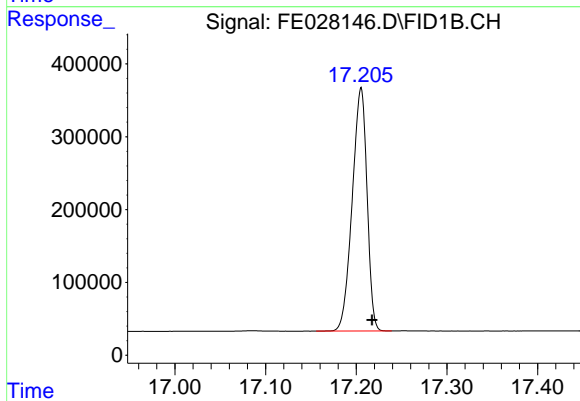
#14 n-Tetracosane (C24)

R.T.: 15.227 min
Delta R.T.: -0.010 min
Response: 4075303
Conc: 17.64 ug/ml



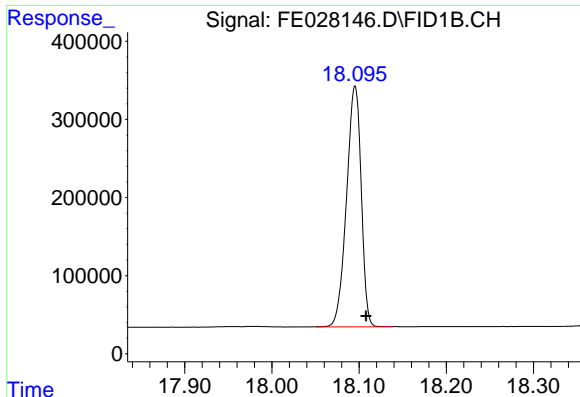
#15 n-Hexacosane (C26)

R.T.: 16.251 min
Delta R.T.: -0.012 min
Response: 3896759
Conc: 17.53 ug/ml



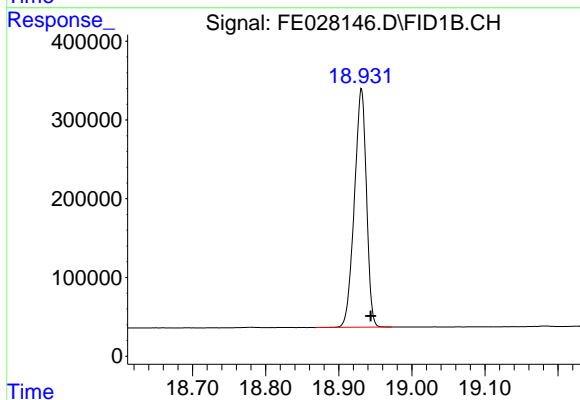
#16 n-Octacosane (C28)

R.T.: 17.205 min
Delta R.T.: -0.012 min
Response: 3787213
Conc: 17.64 ug/ml



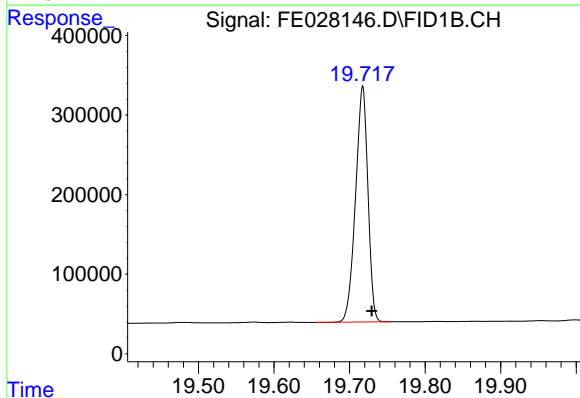
#17 n-Tricontane (C30)

R.T.: 18.095 min
Delta R.T.: -0.013 min
Response: 3602630
Conc: 18.15 ug/ml



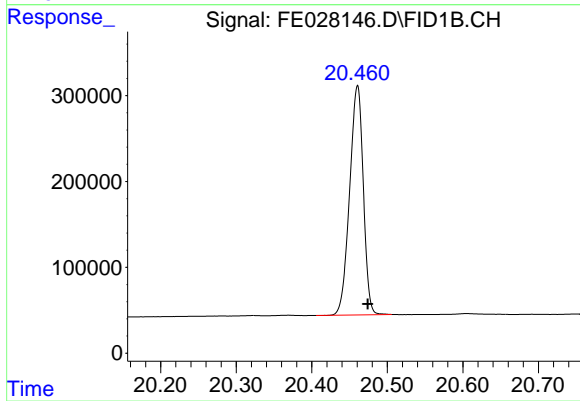
#18 n-Dotriacontane (C32)

R.T.: 18.931 min
Delta R.T.: -0.013 min
Response: 3473807
Conc: 18.97 ug/ml



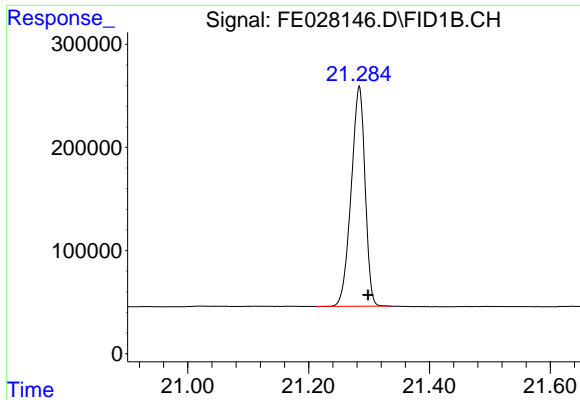
#19 n-Tetratriacontane (C34)

R.T.: 19.717 min
Delta R.T.: -0.012 min
Response: 3372958
Conc: 19.73 ug/ml



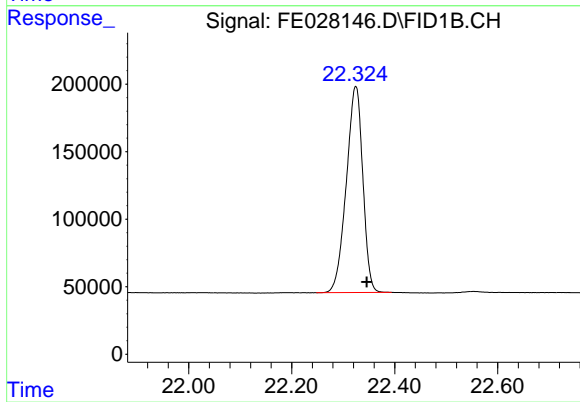
#20 n-Hexatriacontane (C36)

R.T.: 20.461 min
Delta R.T.: -0.013 min
Response: 3355227
Conc: 20.43 ug/ml



#21 n-Octatriacontane (C38)

R.T.: 21.284 min
Delta R.T.: -0.015 min
Response: 3401343
Conc: 20.67 ug/ml



#22 n-Tetracontane (C40)

R.T.: 22.324 min
Delta R.T.: -0.021 min
Response: 3396242
Conc: 20.45 ug/ml