

Data Path : Z:\pestpcbsrv\HPCHEM1\FID_E\Data\FE070924AL\
 Data File : FE049015.D
 Signal(s) : FID1B.ch
 Acq On : 09 Jul 2024 11:30
 Operator : YP\AJ
 Sample : PP23514
 Misc :
 ALS Vial : 7 Sample Multiplier: 1

Instrument :
 FID_E
 ClientSampleId :

Integration File: autoint1.e
 Quant Time: Jul 10 01:26:13 2024
 Quant Method : Z:\pestpcbsrv\HPCHEM1\FID_E\methods\Aliphatic EPH 062124.M
 Quant Title : GC Extractables
 QLast Update : Thu Jun 20 17:53:58 2024
 Response via : Initial Calibration
 Integrator: ChemStation

Volume Inj. : 1 ul
 Signal Phase : Rxi-1ms
 Signal Info : 20M x 0.18mm x 0.18um

Compound	R.T.	Response	Conc Units

System Monitoring Compounds			
12) S 1-chlorooctadecane (S...	13.340	314436	2.445 ug/ml
Spiked Amount 50.000		Recovery =	4.89%
Target Compounds			
1) T n-Nonane (C9)	3.340	13239238	88.061 ug/ml
2) T n-Decane (C10)	4.580	13461429	87.474 ug/ml
3) T A~Naphthalene (C11.7)	6.279	13388676	84.336 ug/ml
4) T n-Dodecane (C12)	6.737	12977851	84.068 ug/ml
5) T A~2-methylnaphthalene...	7.375	13204127	87.192 ug/ml
6) T n-Tetradecane (C14)	8.567	13405051	87.464 ug/ml
7) T n-Hexadecane (C16)	10.172	13434178	85.920 ug/ml
8) T n-Octadecane (C18)	11.614	13342900	83.661 ug/ml
10) T n-Eicosane (C20)	12.926	13441868	86.702 ug/ml
11) T n-Heneicosane (C21)	13.536	13017555	85.493 ug/ml
13) T n-Docosane (C22)	14.123	12950375	85.632 ug/ml
14) T n-Tetracosane (C24)	15.223	23636339	157.282 ug/ml
15) T n-Hexacosane (C26)	16.248	12823334	86.860 ug/ml
16) T n-Octacosane (C28)	17.195	12967578	89.918 ug/ml
17) T n-Tricontane (C30)	18.083	12869402	87.966 ug/ml
18) T n-Dotriacontane (C32)	18.913	13164632	92.073 ug/ml
19) T n-Tetratriacontane (C34)	19.697	13130734	94.895 ug/ml
20) T n-Hexatriacontane (C36)	20.437	13312264	102.428 ug/ml
21) T n-Octatriacontane (C38)	21.175	14084420	109.867 ug/ml
22) T n-Tetracontane (C40)	22.091	14105474	115.185 ug/ml

(f)=RT Delta > 1/2 Window

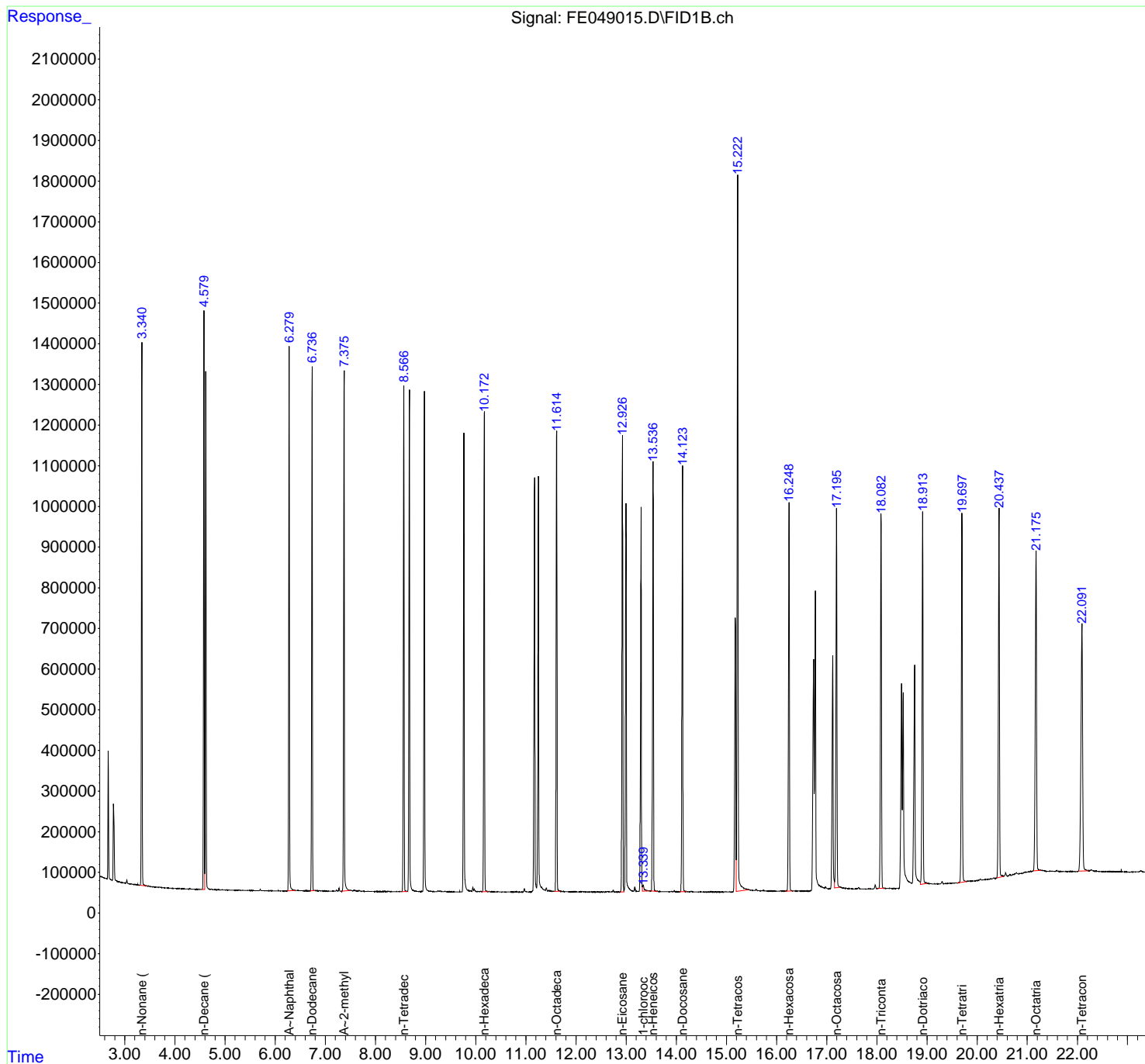
(m)=manual int.

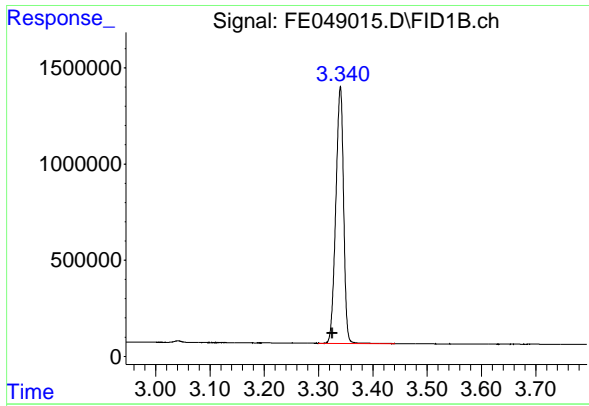
Data Path : Z:\pestpcbsrv\HPCHEM1\FID_E\Data\FE070924AL\
 Data File : FE049015.D
 Signal(s) : FID1B.ch
 Acq On : 09 Jul 2024 11:30
 Operator : YP\AJ
 Sample : PP23514
 Misc :
 ALS Vial : 7 Sample Multiplier: 1

Instrument :
 FID_E
 ClientSampleId :

Integration File: autoint1.e
 Quant Time: Jul 10 01:26:13 2024
 Quant Method : Z:\pestpcbsrv\HPCHEM1\FID_E\methods\Aliphatic EPH 062124.M
 Quant Title : GC Extractables
 QLast Update : Thu Jun 20 17:53:58 2024
 Response via : Initial Calibration
 Integrator: ChemStation

Volume Inj. : 1 ul
 Signal Phase : Rxi-1ms
 Signal Info : 20M x 0.18mm x 0.18um

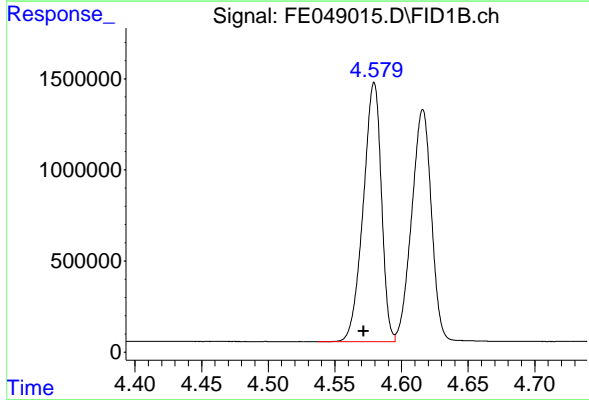




#1 n-Nonane (C9)

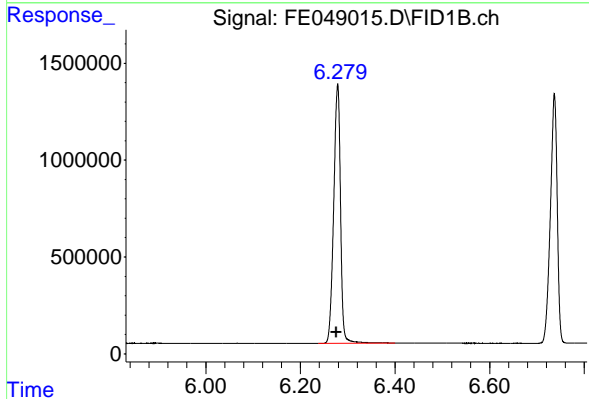
R.T.: 3.340 min
Delta R.T.: 0.015 min
Response: 13239238
Conc: 88.06 ug/ml

Instrument :
FID_E
ClientSampleId :



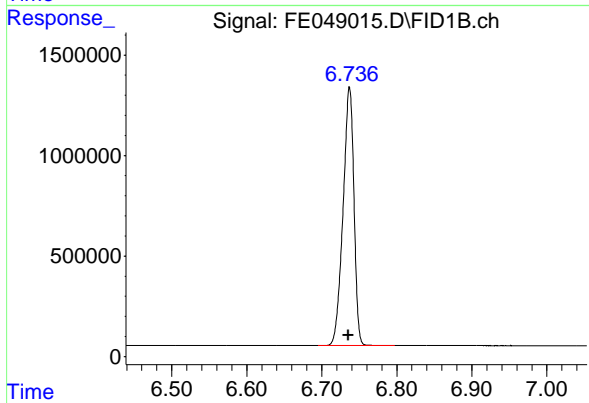
#2 n-Decane (C10)

R.T.: 4.580 min
Delta R.T.: 0.008 min
Response: 13461429
Conc: 87.47 ug/ml



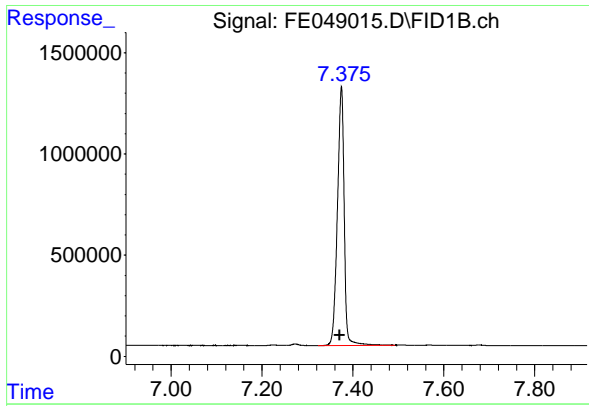
#3 A~Naphthalene (C11.7)

R.T.: 6.279 min
Delta R.T.: 0.003 min
Response: 13388676
Conc: 84.34 ug/ml



#4 n-Dodecane (C12)

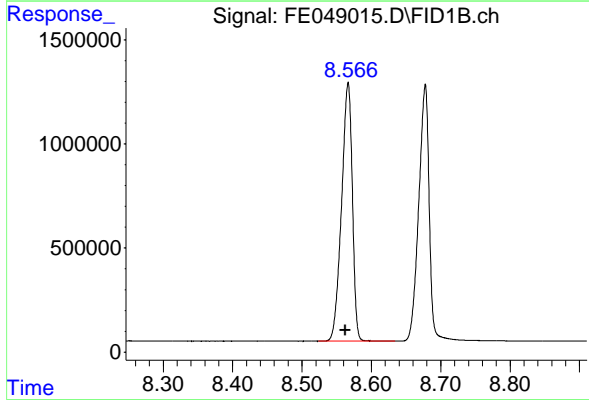
R.T.: 6.737 min
Delta R.T.: 0.002 min
Response: 12977851
Conc: 84.07 ug/ml



#5 A~2-methylnaphthalene (C12.89)

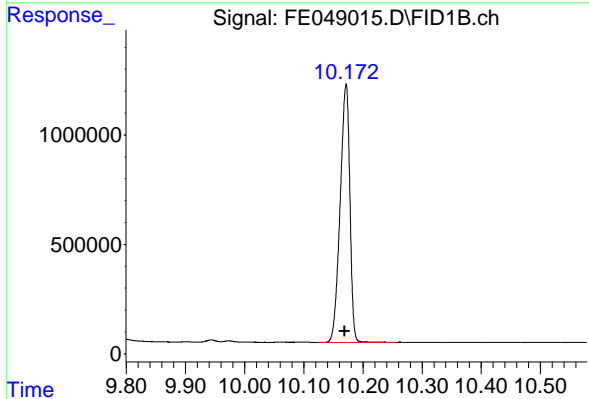
R.T.: 7.375 min
Delta R.T.: 0.004 min
Response: 13204127
Conc: 87.19 ug/ml

Instrument :
FID_E
ClientSampleId :



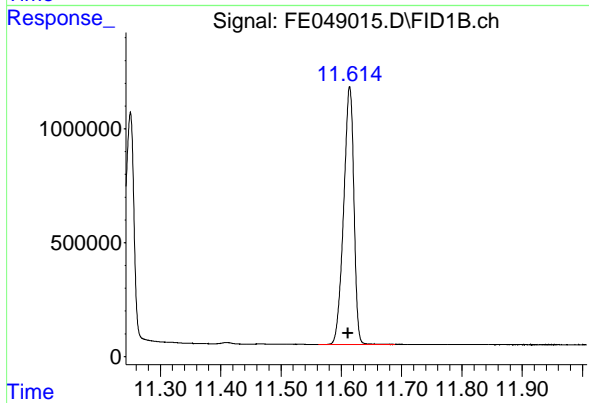
#6 n-Tetradecane (C14)

R.T.: 8.567 min
Delta R.T.: 0.004 min
Response: 13405051
Conc: 87.46 ug/ml



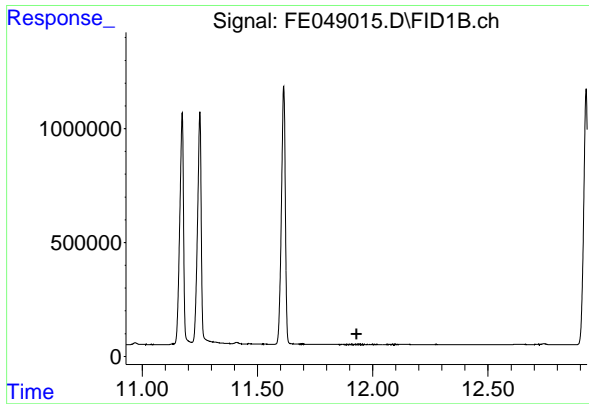
#7 n-Hexadecane (C16)

R.T.: 10.172 min
Delta R.T.: 0.003 min
Response: 13434178
Conc: 85.92 ug/ml



#8 n-Octadecane (C18)

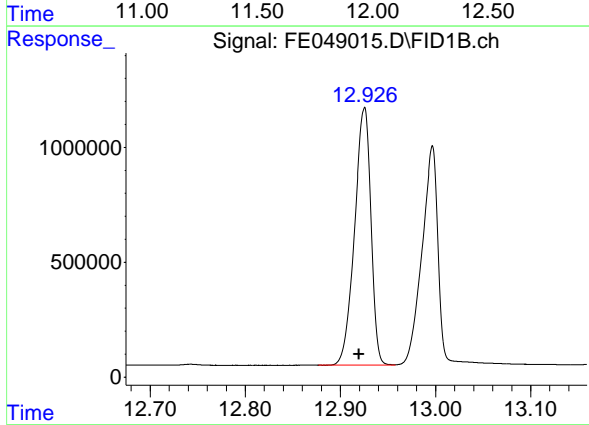
R.T.: 11.614 min
Delta R.T.: 0.003 min
Response: 13342900
Conc: 83.66 ug/ml



#9 ortho-Terphenyl (SURR)

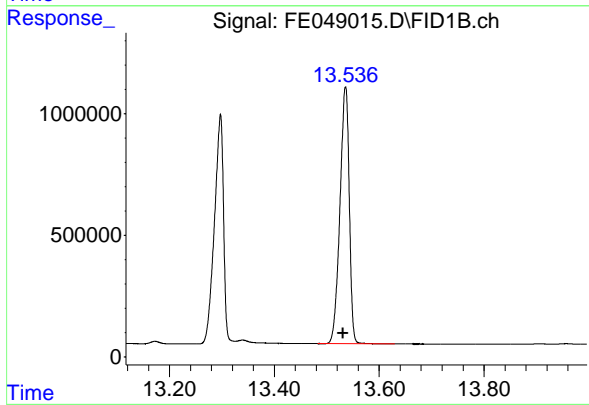
R.T.: 0.000 min
 Exp R.T.: 11.930 min
 Response: 0
 Conc: N.D.

Instrument :
 FID_E
 ClientSampleId :



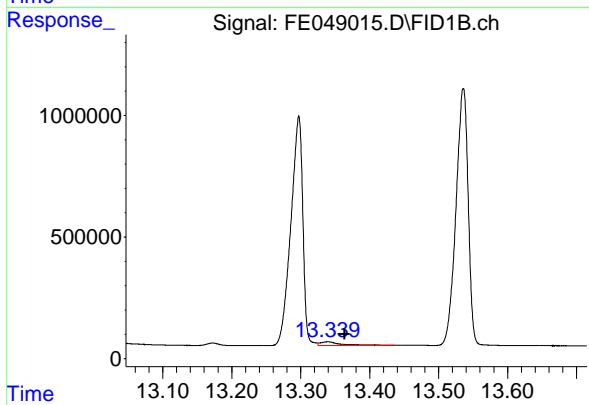
#10 n-Eicosane (C20)

R.T.: 12.926 min
 Delta R.T.: 0.006 min
 Response: 13441868
 Conc: 86.70 ug/ml



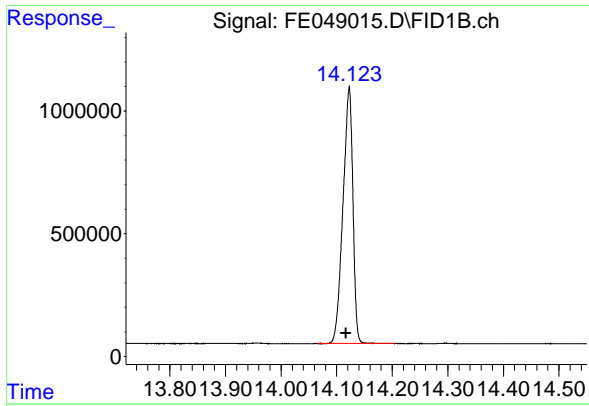
#11 n-Heneicosane (C21)

R.T.: 13.536 min
 Delta R.T.: 0.005 min
 Response: 13017555
 Conc: 85.49 ug/ml



#12 1-chlorooctadecane (SURR)

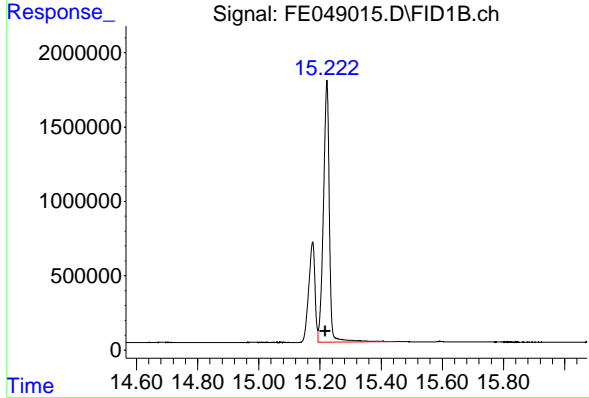
R.T.: 13.340 min
 Delta R.T.: -0.024 min
 Response: 314436
 Conc: 2.45 ug/ml



#13 n-Docosane (C22)

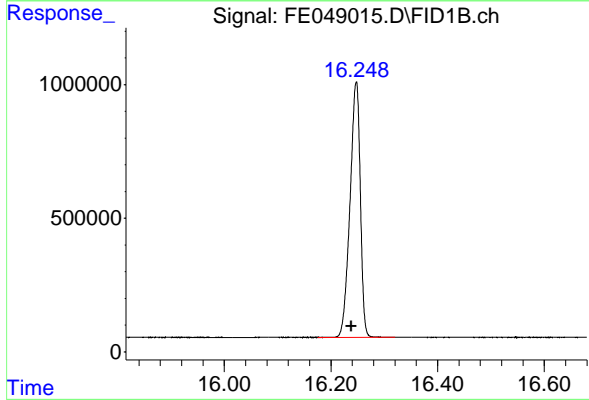
R.T.: 14.123 min
 Delta R.T.: 0.006 min
 Response: 12950375
 Conc: 85.63 ug/ml

Instrument :
 FID_E
 ClientSampleId :



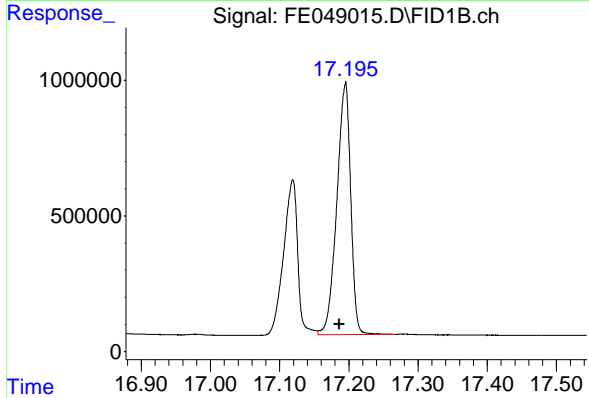
#14 n-Tetracosane (C24)

R.T.: 15.223 min
 Delta R.T.: 0.004 min
 Response: 23636339
 Conc: 157.28 ug/ml



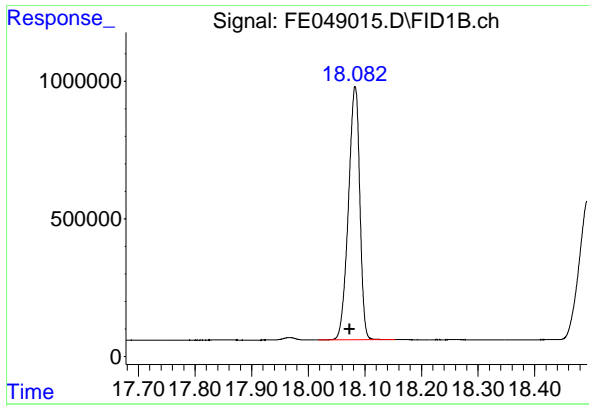
#15 n-Hexacosane (C26)

R.T.: 16.248 min
 Delta R.T.: 0.009 min
 Response: 12823334
 Conc: 86.86 ug/ml



#16 n-Octacosane (C28)

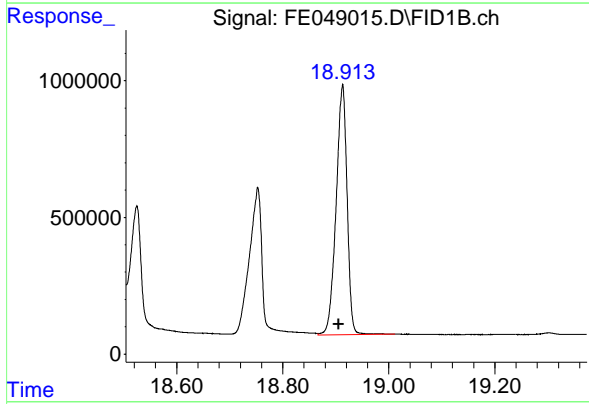
R.T.: 17.195 min
 Delta R.T.: 0.009 min
 Response: 12967578
 Conc: 89.92 ug/ml



#17 n-Tricontane (C30)

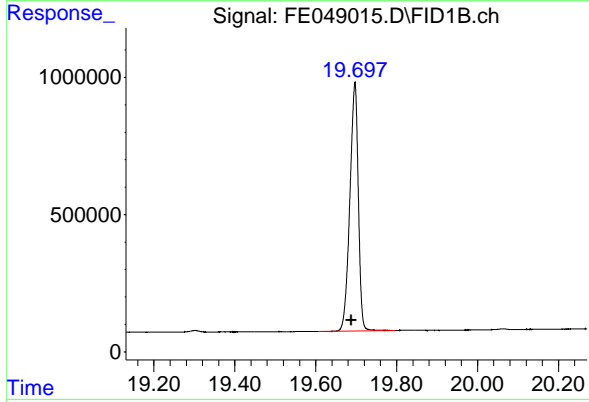
R.T.: 18.083 min
 Delta R.T.: 0.010 min
 Response: 12869402
 Conc: 87.97 ug/ml

Instrument :
 FID_E
 ClientSampleId :



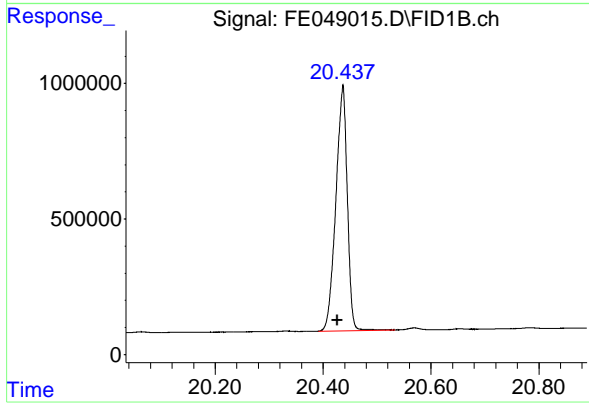
#18 n-Dotriacontane (C32)

R.T.: 18.913 min
 Delta R.T.: 0.008 min
 Response: 13164632
 Conc: 92.07 ug/ml



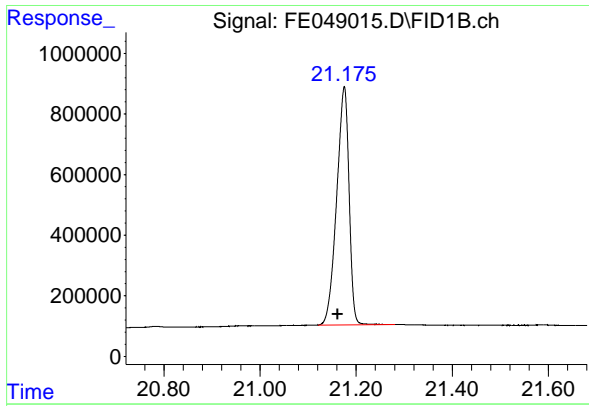
#19 n-Tetracontane (C34)

R.T.: 19.697 min
 Delta R.T.: 0.009 min
 Response: 13130734
 Conc: 94.89 ug/ml



#20 n-Hexatriacontane (C36)

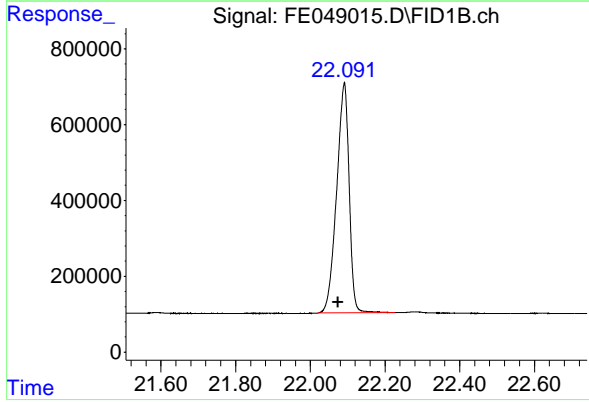
R.T.: 20.437 min
 Delta R.T.: 0.010 min
 Response: 13312264
 Conc: 102.43 ug/ml



#21 n-Octatriacontane (C38)

R.T.: 21.175 min
Delta R.T.: 0.014 min
Response: 14084420
Conc: 109.87 ug/ml

Instrument :
FID_E
ClientSampleId :



#22 n-Tetracontane (C40)

R.T.: 22.091 min
Delta R.T.: 0.017 min
Response: 14105474
Conc: 115.18 ug/ml