

Data Path : Z:\pestpcbsrv\HPCHEM1\FID_E\Data\FE070924AL\
 Data File : FE049024.D
 Signal(s) : FID1B.ch
 Acq On : 09 Jul 2024 18:12
 Operator : YP\AJ
 Sample : P3170-03D
 Misc :
 ALS Vial : 13 Sample Multiplier: 1

Instrument :
 FID_E
ClientSampleId :
 SOIL-DRUMS-2

Integration File: autoint1.e
 Quant Time: Jul 10 01:27:38 2024
 Quant Method : Z:\pestpcbsrv\HPCHEM1\FID_E\methods\Aliphatic EPH 062124.M
 Quant Title : GC Extractables
 QLast Update : Thu Jun 20 17:53:58 2024
 Response via : Initial Calibration
 Integrator: ChemStation

Volume Inj. : 1 ul
 Signal Phase : Rxi-1ms
 Signal Info : 20M x 0.18mm x 0.18um

Compound	R.T.	Response	Conc Units

System Monitoring Compounds			
9) S ortho-Terphenyl (SURR)	11.927	4673004	27.947 ug/ml
Spiked Amount	50.000	Recovery	= 55.89%
12) S 1-chlorooctadecane (S...	13.362	3932285	30.580 ug/ml
Spiked Amount	50.000	Recovery	= 61.16%

Target Compounds

(f)=RT Delta > 1/2 Window

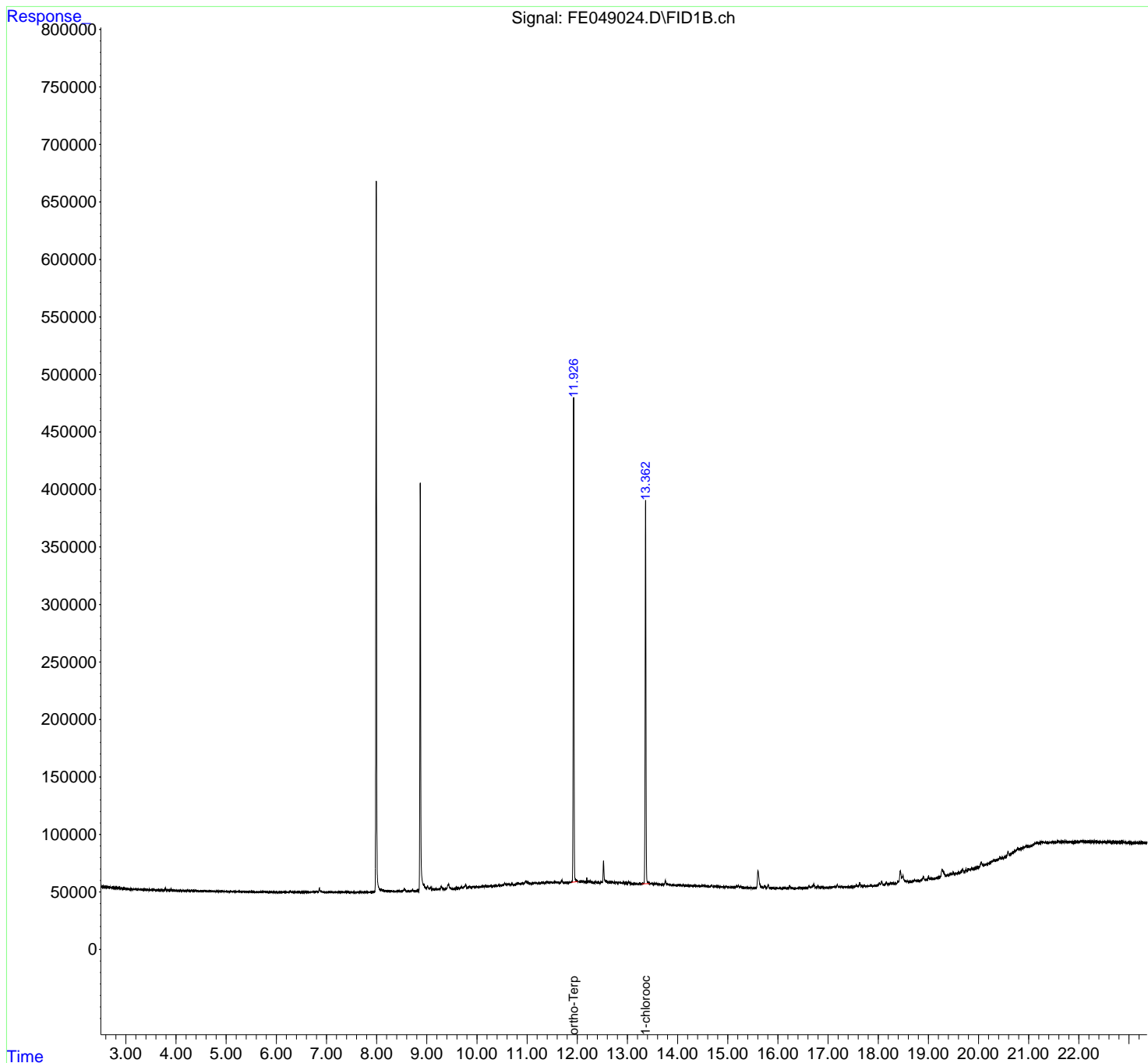
(m)=manual int.

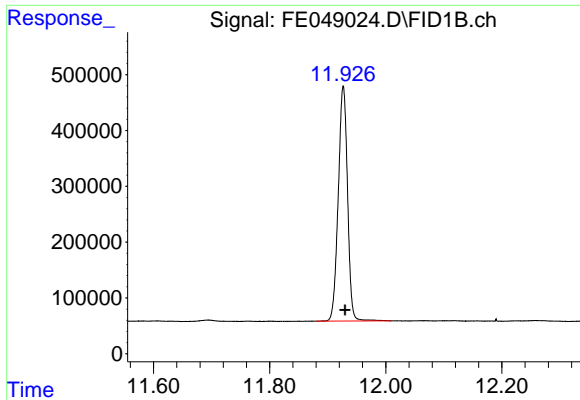
Data Path : Z:\pestpcbsrv\HPCHEM1\FID_E\Data\FE070924AL\
 Data File : FE049024.D
 Signal(s) : FID1B.ch
 Acq On : 09 Jul 2024 18:12
 Operator : YP\AJ
 Sample : P3170-03D
 Misc :
 ALS Vial : 13 Sample Multiplier: 1

Instrument :
 FID_E
 ClientSampleId :
 SOIL-DRUMS-2

Integration File: autoint1.e
 Quant Time: Jul 10 01:27:38 2024
 Quant Method : Z:\pestpcbsrv\HPCHEM1\FID_E\methods\Aliphatic EPH 062124.M
 Quant Title : GC Extractables
 QLast Update : Thu Jun 20 17:53:58 2024
 Response via : Initial Calibration
 Integrator: ChemStation

Volume Inj. : 1 ul
 Signal Phase : Rxi-1ms
 Signal Info : 20M x 0.18mm x 0.18um

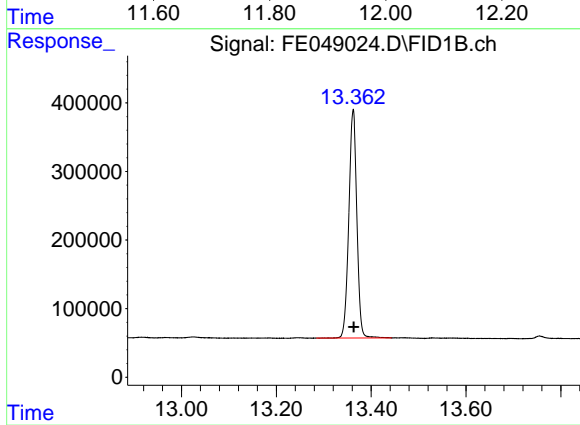




#9 ortho-Terphenyl (SURR)

R.T.: 11.927 min
Delta R.T.: -0.003 min
Response: 4673004
Conc: 27.95 ug/ml

Instrument :
FID_E
ClientSampleId :
SOIL-DRUMS-2



#12 1-chlorooctadecane (SURR)

R.T.: 13.362 min
Delta R.T.: -0.001 min
Response: 3932285
Conc: 30.58 ug/ml