

Data Path : Z:\pestpcbsrv\HPCHEM1\FID C\Data\FC071018AL\  
 Data File : FC035253.D  
 Signal(s) : FID1A.CH  
 Acq On : 11 Jul 2018 7:51  
 Operator : AJ\SJ  
 Sample : J3879-03  
 Misc :  
 ALS Vial : 27 Sample Multiplier: 1

Integration File: autoint1.e  
 Quant Time: Jul 11 08:41:53 2018  
 Quant Method : Z:\PESTPCBSRV\HPCHEM1\FID\_C\Method\Alaphatic EPH 062518.M  
 Quant Title : GC Extractables  
 QLast Update : Mon Jun 25 14:27:40 2018  
 Response via : Initial Calibration  
 Integrator: ChemStation 6890 Scale Mode: Large solvent peaks clipped

Volume Inj. : 1 ul  
 Signal Phase : Rxi-lms  
 Signal Info : 20M x 0.18mm x 0.18um

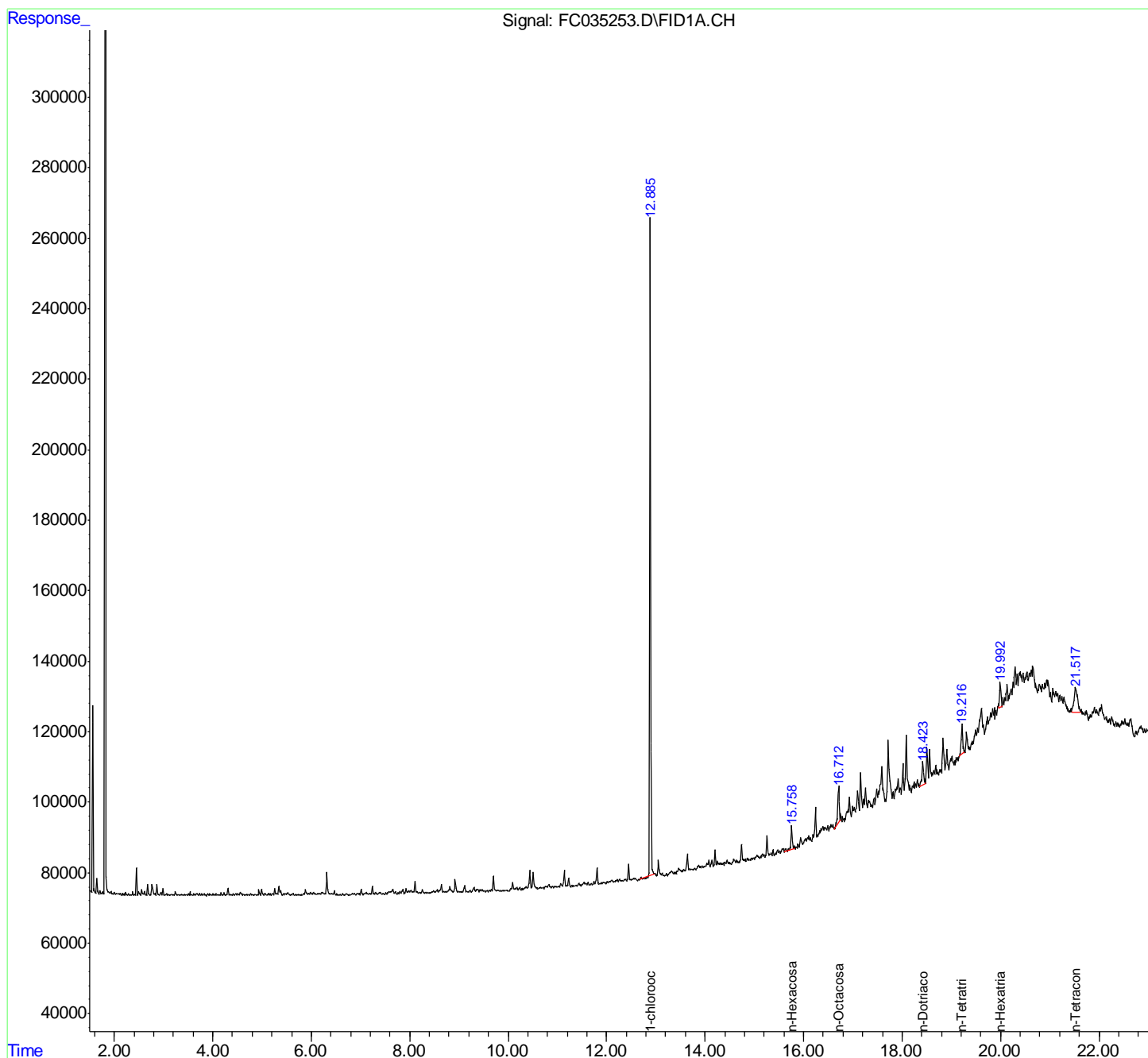
Compound	R.T.	Response	Conc Units
-----			
System Monitoring Compounds			
12) S 1-chlorooctadecane (S...	12.886	2284296	28.538 ug/ml
Spiked Amount 50.000		Recovery =	57.08%
Target Compounds			
15) T n-Hexacosane (C26)	15.759	128950	1.364 ug/ml
16) T n-Octacosane (C28)	16.711	195032	2.074 ug/ml
18) T n-Dotriacontane (C32)	18.421	155881	1.756 ug/ml
19) T n-Tetratriacontane (C34)	19.217	176755	1.954 ug/ml
20) T n-Hexatriacontane (C36)	19.994	135886	1.516 ug/ml
22) T n-Tetracontane (C40)	21.519	352389	3.750 ug/ml
-----			

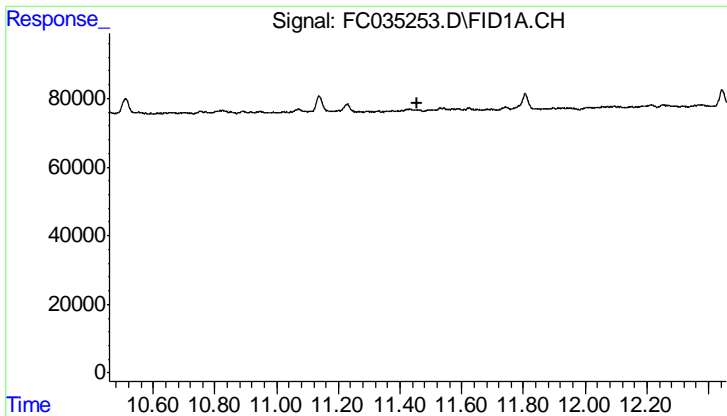
(f)=RT Delta > 1/2 Window (m)=manual int.

Data Path : Z:\pestpcbsrv\HPCHEM1\FID C\Data\FC071018AL\  
 Data File : FC035253.D  
 Signal(s) : FID1A.CH  
 Acq On : 11 Jul 2018 7:51  
 Operator : AJ\SJ  
 Sample : J3879-03  
 Misc :  
 ALS Vial : 27 Sample Multiplier: 1

Integration File: autoint1.e  
 Quant Time: Jul 11 08:41:53 2018  
 Quant Method : Z:\PESTPCBSRV\HPCHEM1\FID\_C\Method\Alaphatic EPH 062518.M  
 Quant Title : GC Extractables  
 QLast Update : Mon Jun 25 14:27:40 2018  
 Response via : Initial Calibration  
 Integrator: ChemStation 6890 Scale Mode: Large solvent peaks clipped

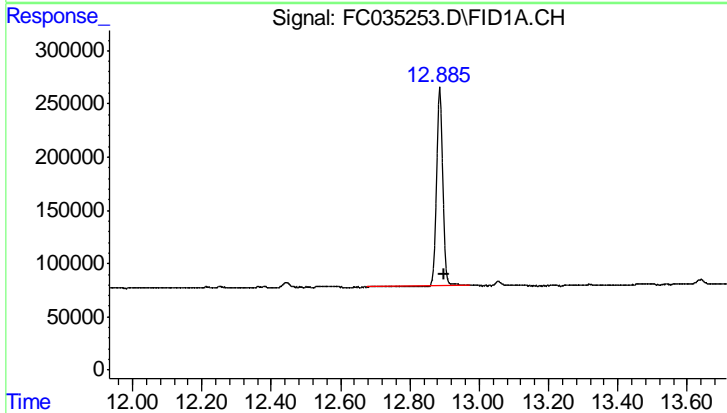
Volume Inj. : 1 ul  
 Signal Phase : Rxi-lms  
 Signal Info : 20M x 0.18mm x 0.18um





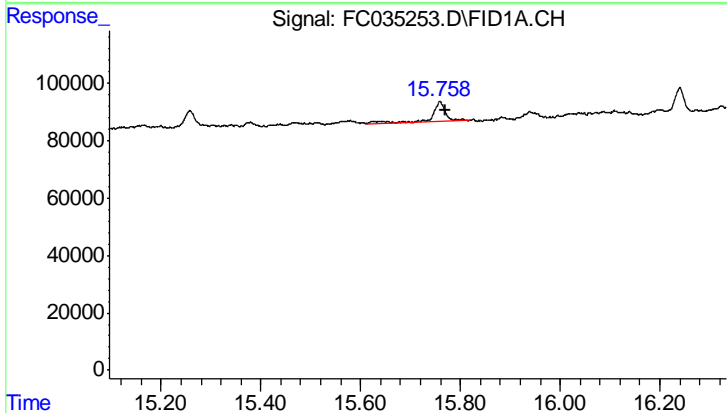
#9 ortho-Terphenyl (SURR)

R.T.: 0.000 min  
 Exp R.T.: 11.458 min  
 Response: 0  
 Conc: N.D.



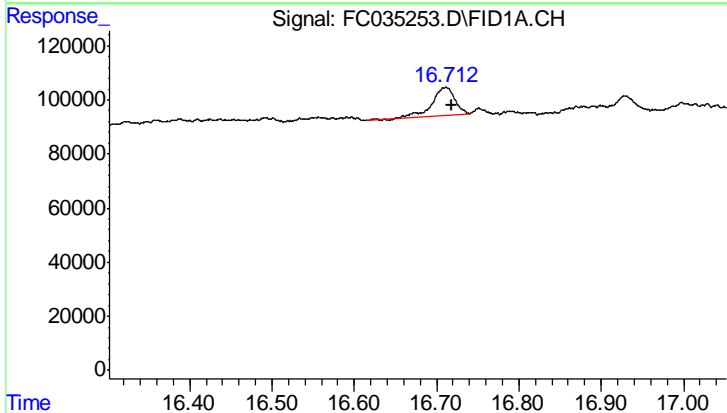
#12 1-chlorooctadecane (SURR)

R.T.: 12.886 min  
 Delta R.T.: -0.013 min  
 Response: 2284296  
 Conc: 28.54 ug/ml



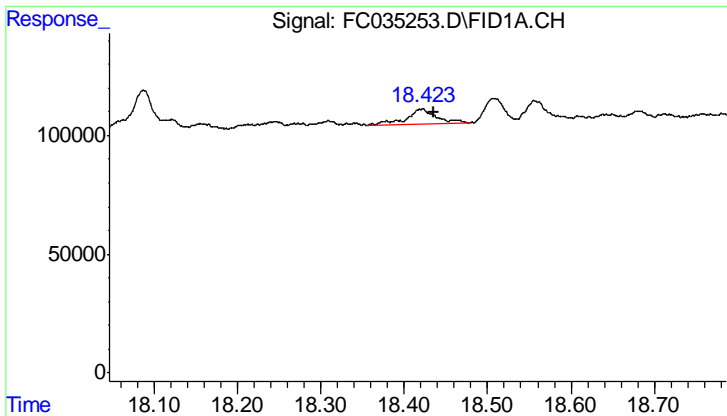
#15 n-Hexacosane (C26)

R.T.: 15.759 min  
 Delta R.T.: -0.012 min  
 Response: 128950  
 Conc: 1.36 ug/ml



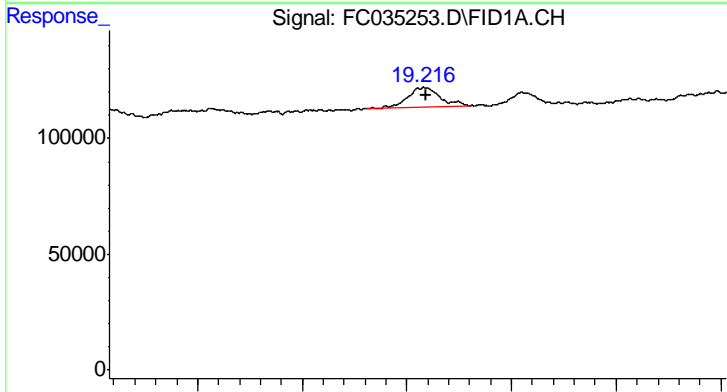
#16 n-Octacosane (C28)

R.T.: 16.711 min  
 Delta R.T.: -0.008 min  
 Response: 195032  
 Conc: 2.07 ug/ml



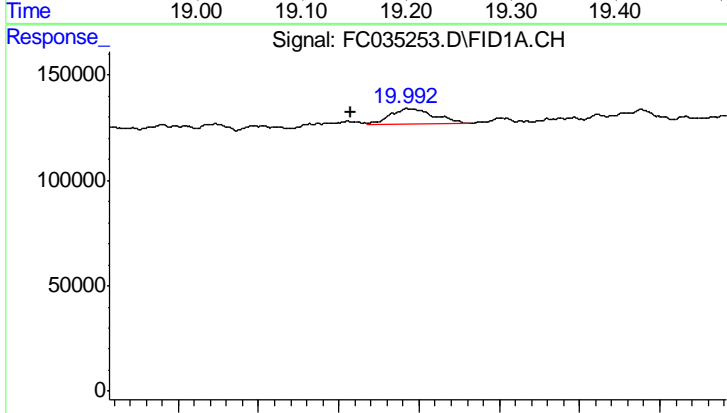
#18 n-Dotriacontane (C32)

R.T.: 18.421 min  
 Delta R.T.: -0.015 min  
 Response: 155881  
 Conc: 1.76 ug/ml



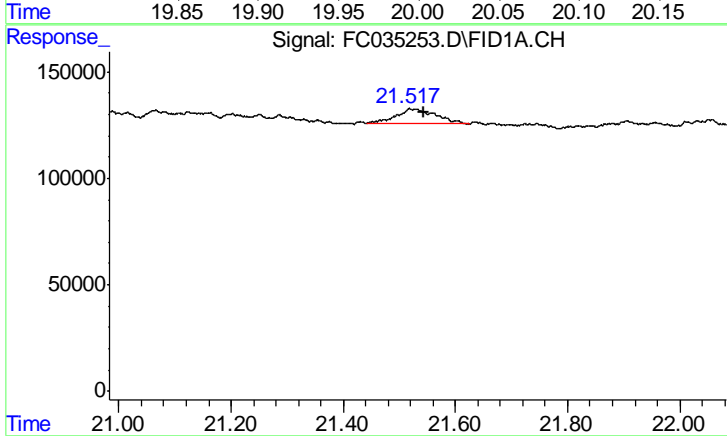
#19 n-Tetratriacontane (C34)

R.T.: 19.217 min  
 Delta R.T.: -0.002 min  
 Response: 176755  
 Conc: 1.95 ug/ml



#20 n-Hexatriacontane (C36)

R.T.: 19.994 min  
 Delta R.T.: 0.037 min  
 Response: 135886  
 Conc: 1.52 ug/ml



#22 n-Tetracontane (C40)

R.T.: 21.519 min  
 Delta R.T.: -0.023 min  
 Response: 352389  
 Conc: 3.75 ug/ml