

Data Path : Z:\pestpcbsrv\HPCHEM1\FID\_E\Data\FE071018AL\  
 Data File : FE028163.D  
 Signal(s) : FID1B.CH  
 Acq On : 10 Jul 2018 15:30  
 Operator : AJ\MA  
 Sample : J3891-05  
 Misc :  
 ALS Vial : 14 Sample Multiplier: 1

Integration File: sample.E  
 Quant Time: Jul 10 16:46:13 2018  
 Quant Method : Z:\pestpcbsrv\HPCHEM1\FID\_E\methods\Alaphatic EPH 062918.M  
 Quant Title : GC Extractables  
 QLast Update : Fri Jun 29 22:35:33 2018  
 Response via : Initial Calibration  
 Integrator: ChemStation 6890 Scale Mode: Large solvent peaks clipped

Volume Inj. : 1 ul  
 Signal Phase : Rxi-1ms  
 Signal Info : 20M x 0.18mm x 0.18um

Compound	R.T.	Response	Conc Units
-----			
System Monitoring Compounds			
9) S ortho-Terphenyl (SURR)	11.950	4868927	20.523 ug/ml
Spiked Amount	50.000	Recovery	= 41.05%
12) S 1-chlorooctadecane (S...	13.376	4402646	22.150 ug/ml
Spiked Amount	50.000	Recovery	= 44.30%

Target Compounds

-----

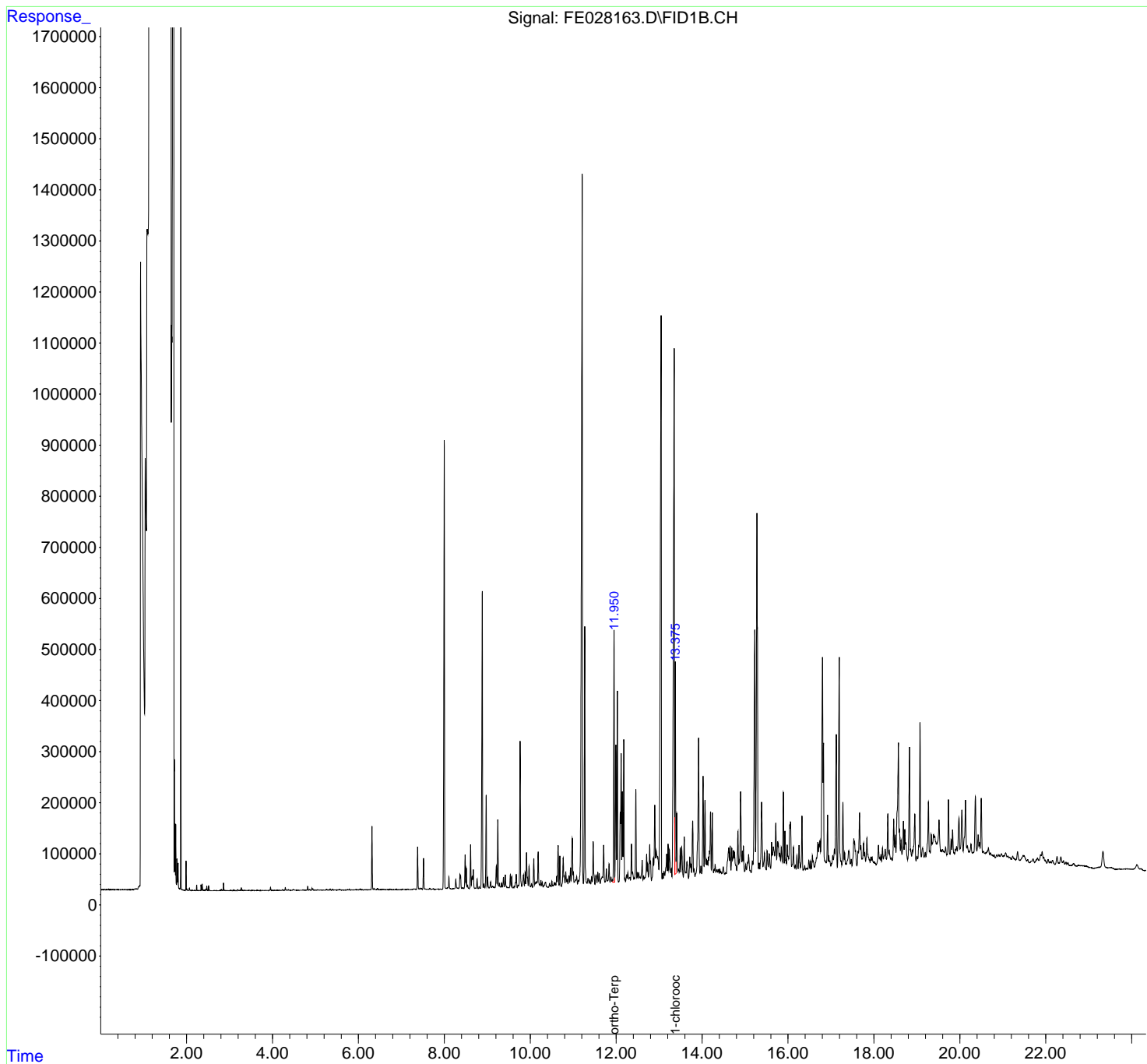
(f)=RT Delta > 1/2 Window

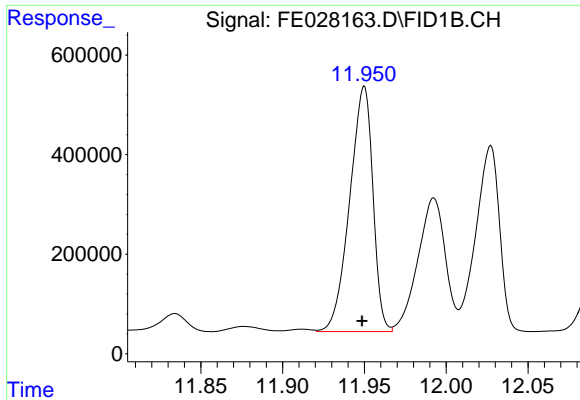
(m)=manual int.

Data Path : Z:\pestpcbsrv\HPCHEM1\FID\_E\Data\FE071018AL\  
Data File : FE028163.D  
Signal(s) : FID1B.CH  
Acq On : 10 Jul 2018 15:30  
Operator : AJ\MA  
Sample : J3891-05  
Misc :  
ALS Vial : 14 Sample Multiplier: 1

Integration File: sample.E  
Quant Time: Jul 10 16:46:13 2018  
Quant Method : Z:\pestpcbsrv\HPCHEM1\FID\_E\methods\Alaphatic EPH 062918.M  
Quant Title : GC Extractables  
QLast Update : Fri Jun 29 22:35:33 2018  
Response via : Initial Calibration  
Integrator: ChemStation 6890 Scale Mode: Large solvent peaks clipped

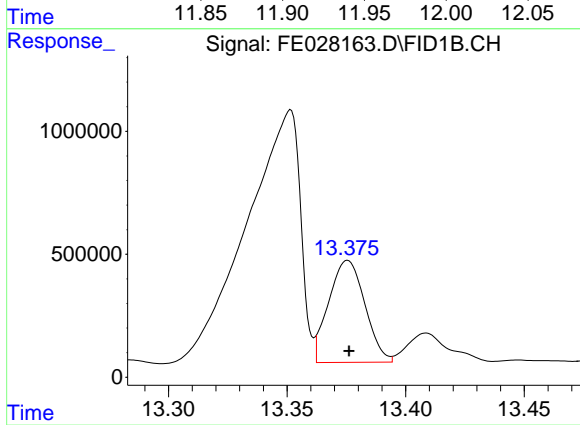
Volume Inj. : 1 ul  
Signal Phase : Rxi-1ms  
Signal Info : 20M x 0.18mm x 0.18um





#9 ortho-Terphenyl (SURR)

R.T.: 11.950 min  
Delta R.T.: 0.001 min  
Response: 4868927  
Conc: 20.52 ug/ml



#12 1-chlorooctadecane (SURR)

R.T.: 13.376 min  
Delta R.T.: 0.000 min  
Response: 4402646  
Conc: 22.15 ug/ml