

Data Path : Z:\pestpcbsrv\HPCHEM1\FID\_E\Data\FE071018AL\  
 Data File : FE028184.D  
 Signal(s) : FID1B.CH  
 Acq On : 11 Jul 2018 3:50  
 Operator : AJ\MA  
 Sample : J3914-07  
 Misc :  
 ALS Vial : 33 Sample Multiplier: 1

Integration File: sample.E  
 Quant Time: Jul 11 07:23:57 2018  
 Quant Method : Z:\pestpcbsrv\HPCHEM1\FID\_E\methods\Alaphatic EPH 062918.M  
 Quant Title : GC Extractables  
 QLast Update : Fri Jun 29 22:35:33 2018  
 Response via : Initial Calibration  
 Integrator: ChemStation 6890 Scale Mode: Large solvent peaks clipped

Volume Inj. : 1 ul  
 Signal Phase : Rxi-1ms  
 Signal Info : 20M x 0.18mm x 0.18um

Compound	R.T.	Response	Conc Units
-----			
System Monitoring Compounds			
9) S ortho-Terphenyl (SURR)	11.965	5339026	22.504 ug/ml
Spiked Amount	50.000	Recovery	= 45.01%
12) S 1-chlorooctadecane (S...	13.364	7567224	38.071 ug/ml
Spiked Amount	50.000	Recovery	= 76.14%

Target Compounds

-----

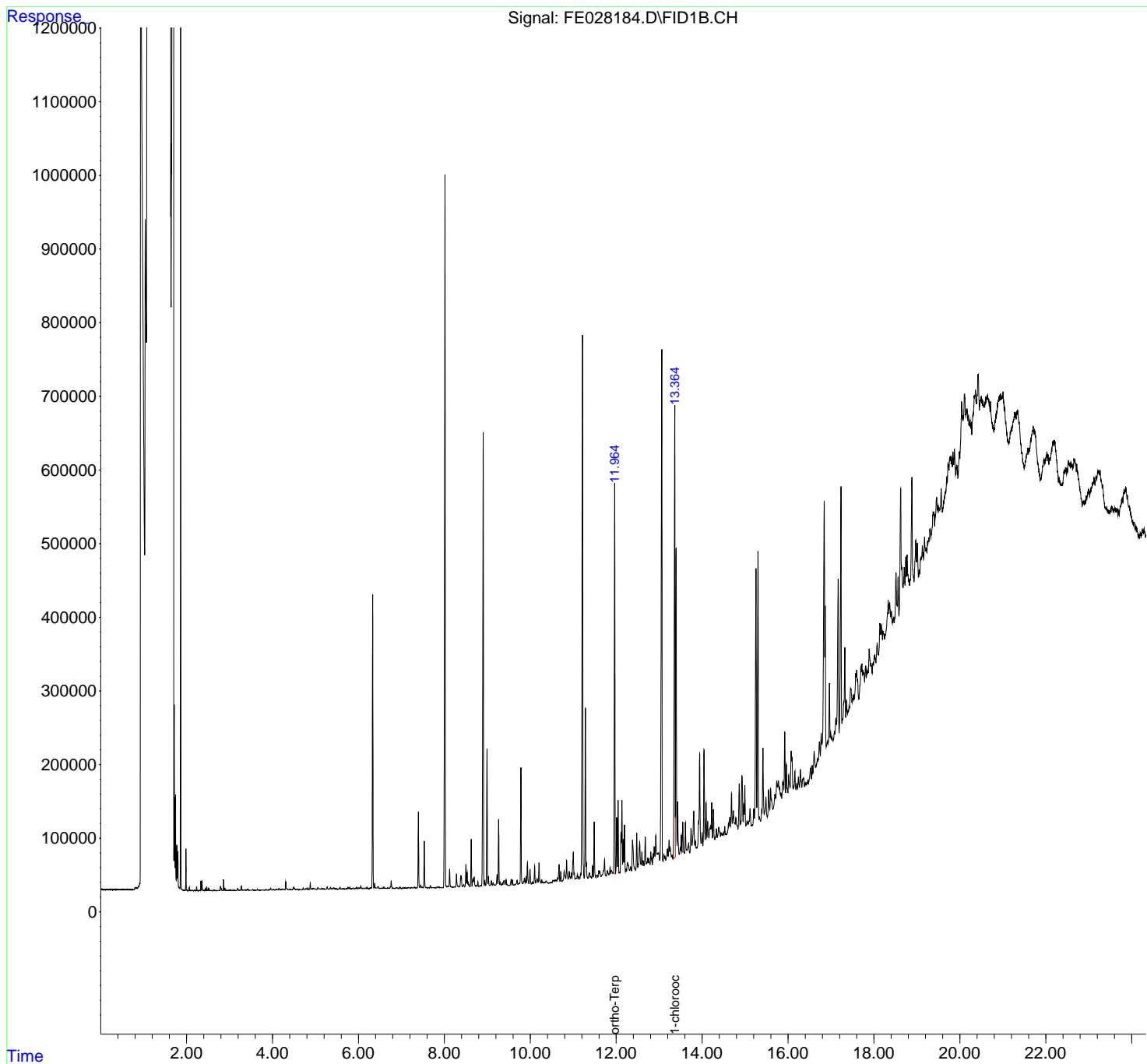
(f)=RT Delta > 1/2 Window

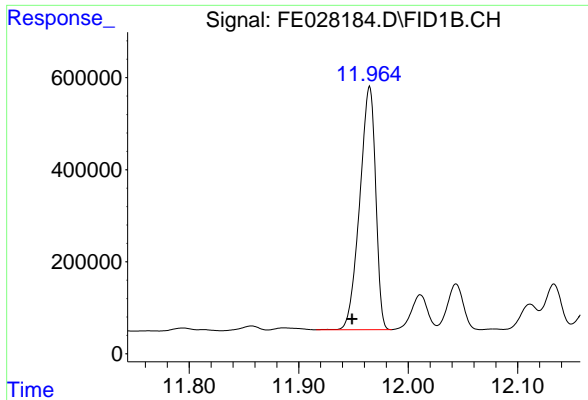
(m)=manual int.

Data Path : Z:\pestpcbsrv\HPCHEM1\FID\_E\Data\FE071018AL\  
 Data File : FE028184.D  
 Signal(s) : FID1B.CH  
 Acq On : 11 Jul 2018 3:50  
 Operator : AJ\MA  
 Sample : J3914-07  
 Misc :  
 ALS Vial : 33 Sample Multiplier: 1

Integration File: sample.E  
 Quant Time: Jul 11 07:23:57 2018  
 Quant Method : Z:\pestpcbsrv\HPCHEM1\FID\_E\methods\Alaphatic EPH 062918.M  
 Quant Title : GC Extractables  
 QLast Update : Fri Jun 29 22:35:33 2018  
 Response via : Initial Calibration  
 Integrator: ChemStation 6890 Scale Mode: Large solvent peaks clipped

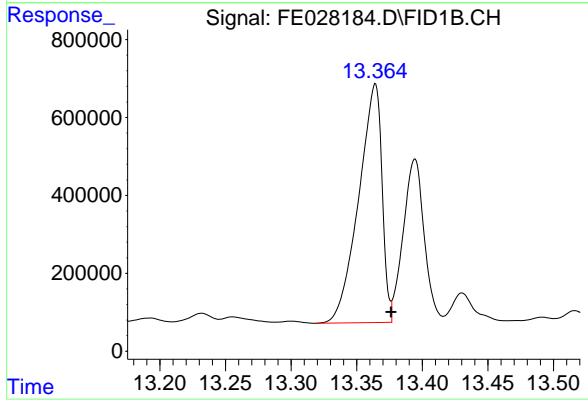
Volume Inj. : 1 ul  
 Signal Phase : Rxi-1ms  
 Signal Info : 20M x 0.18mm x 0.18um





#9 ortho-Terphenyl (SURR)

R.T.: 11.965 min  
Delta R.T.: 0.016 min  
Response: 5339026  
Conc: 22.50 ug/ml



#12 1-chlorooctadecane (SURR)

R.T.: 13.364 min  
Delta R.T.: -0.012 min  
Response: 7567224  
Conc: 38.07 ug/ml