

Data Path : Z:\pestpcbsrv\HPCHEM1\FID\_E\Data\FE071118AL\  
 Data File : FE028208.D  
 Signal(s) : FID1B.CH  
 Acq On : 11 Jul 2018 20:01  
 Operator : AJ\SJ  
 Sample : J3914-05DL 2X  
 Misc :  
 ALS Vial : 5 Sample Multiplier: 1

Integration File: autoint1.e  
 Quant Time: Jul 12 04:07:18 2018  
 Quant Method : Z:\pestpcbsrv\HPCHEM1\FID\_E\methods\Alaphatic EPH 062918.M  
 Quant Title : GC Extractables  
 QLast Update : Fri Jun 29 22:35:33 2018  
 Response via : Initial Calibration  
 Integrator: ChemStation 6890 Scale Mode: Large solvent peaks clipped

Volume Inj. : 1 ul  
 Signal Phase : Rxi-lms  
 Signal Info : 20M x 0.18mm x 0.18um

Compound	R.T.	Response	Conc Units
-----			
System Monitoring Compounds			
9) S ortho-Terphenyl (SURR)	11.945	2670928	11.258 ug/ml
Spiked Amount	50.000	Recovery	= 22.52%
12) S 1-chlorooctadecane (S...	13.376	1964759	9.885 ug/ml
Spiked Amount	50.000	Recovery	= 19.77%
Target Compounds			
6) T n-Tetradecane (C14)	8.611	244519	1.188 ug/ml
14) T n-Tetracosane (C24)	15.241	286333	1.239 ug/ml
15) T n-Hexacosane (C26)	16.271	416694	1.874 ug/ml
16) T n-Octacosane (C28)	17.233	411996	1.919 ug/ml
17) T n-Tricontane (C30)	18.133	1579079	7.957 ug/ml
18) T n-Dotriacontane (C32)	18.943	692151	3.780 ug/ml
19) T n-Tetratriacontane (C34)	19.761	2983408	17.454 ug/ml
20) T n-Hexatriacontane (C36)	20.470	2322178	14.137 ug/ml
-----			

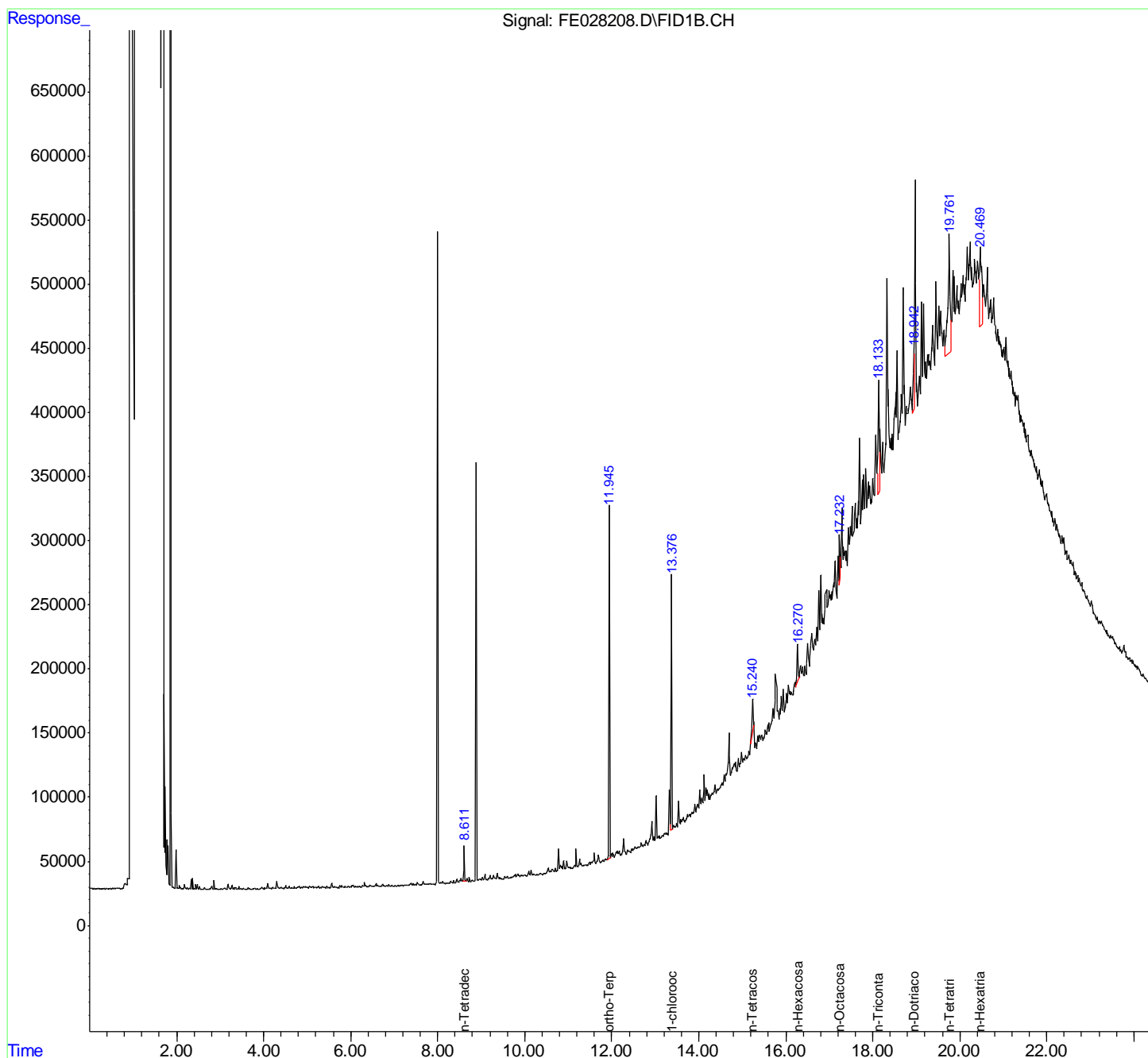
(f)=RT Delta > 1/2 Window

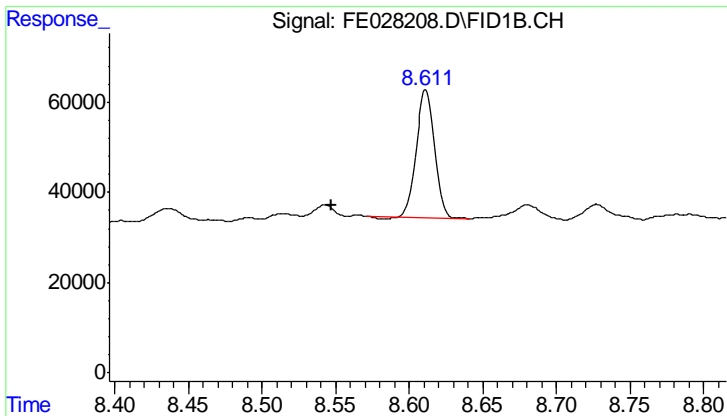
(m)=manual int.

Data Path : Z:\pestpcbsrv\HPCHEM1\FID\_E\Data\FE071118AL\  
 Data File : FE028208.D  
 Signal(s) : FID1B.CH  
 Acq On : 11 Jul 2018 20:01  
 Operator : AJ\SJ  
 Sample : J3914-05DL 2X  
 Misc :  
 ALS Vial : 5 Sample Multiplier: 1

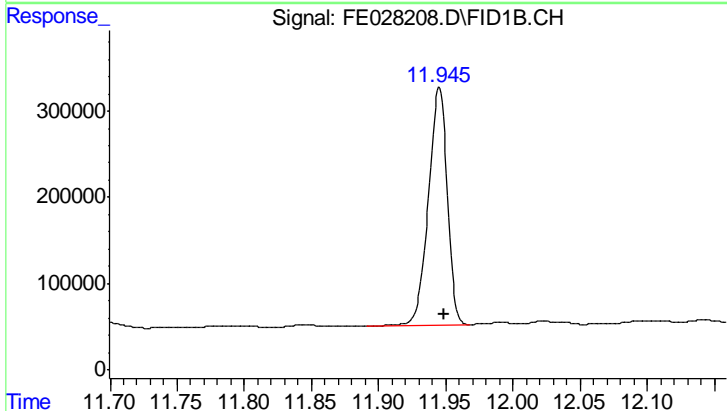
Integration File: autoint1.e  
 Quant Time: Jul 12 04:07:18 2018  
 Quant Method : Z:\pestpcbsrv\HPCHEM1\FID\_E\methods\Alaphatic EPH 062918.M  
 Quant Title : GC Extractables  
 QLast Update : Fri Jun 29 22:35:33 2018  
 Response via : Initial Calibration  
 Integrator: ChemStation 6890 Scale Mode: Large solvent peaks clipped

Volume Inj. : 1 ul  
 Signal Phase : Rxi-lms  
 Signal Info : 20M x 0.18mm x 0.18um

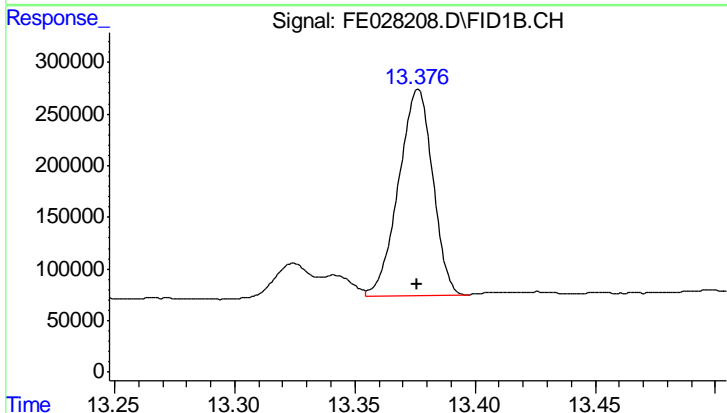




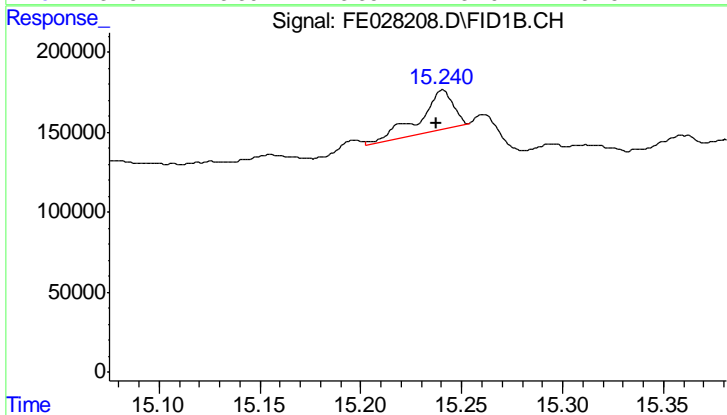
#6 n-Tetradecane (C14)  
 R.T.: 8.611 min  
 Delta R.T.: 0.064 min  
 Response: 244519  
 Conc: 1.19 ug/ml



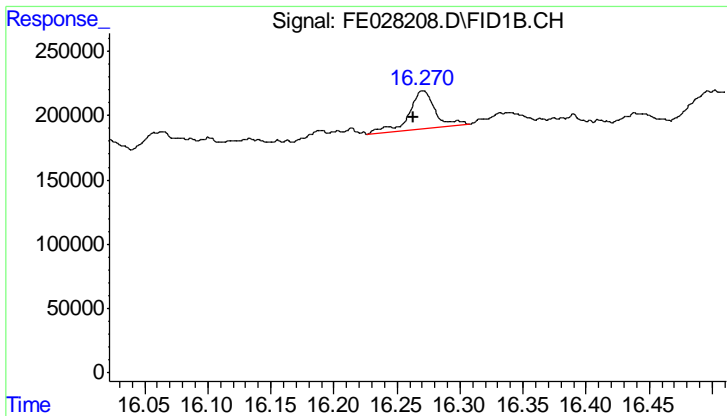
#9 ortho-Terphenyl (SURR)  
 R.T.: 11.945 min  
 Delta R.T.: -0.004 min  
 Response: 2670928  
 Conc: 11.26 ug/ml



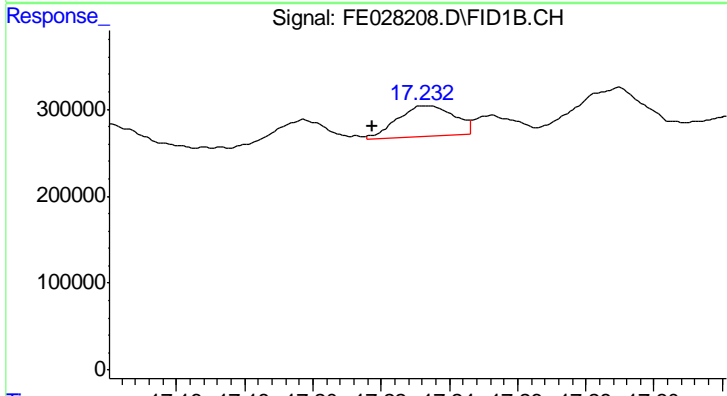
#12 1-chlorooctadecane (SURR)  
 R.T.: 13.376 min  
 Delta R.T.: 0.000 min  
 Response: 1964759  
 Conc: 9.88 ug/ml



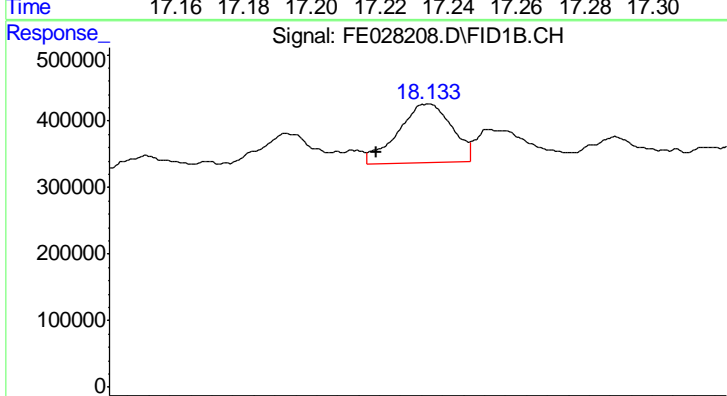
#14 n-Tetracosane (C24)  
 R.T.: 15.241 min  
 Delta R.T.: 0.003 min  
 Response: 286333  
 Conc: 1.24 ug/ml



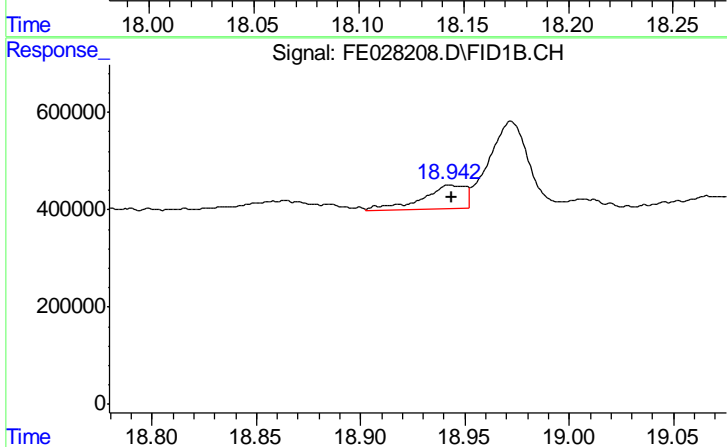
#15 n-Hexacosane (C26)  
R.T.: 16.271 min  
Delta R.T.: 0.007 min  
Response: 416694  
Conc: 1.87 ug/ml



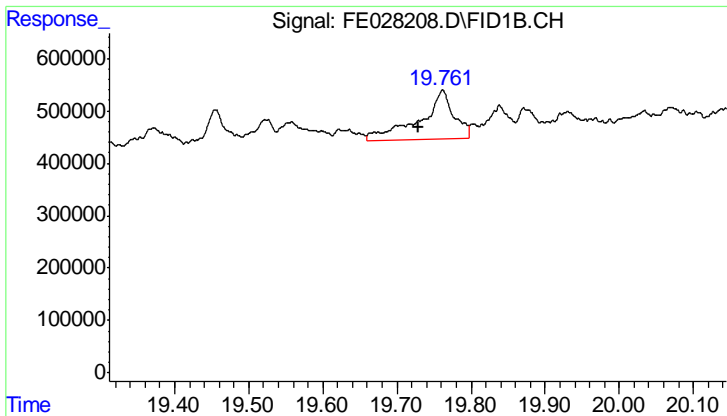
#16 n-Octacosane (C28)  
R.T.: 17.233 min  
Delta R.T.: 0.016 min  
Response: 411996  
Conc: 1.92 ug/ml



#17 n-Tricontane (C30)  
R.T.: 18.133 min  
Delta R.T.: 0.025 min  
Response: 1579079  
Conc: 7.96 ug/ml

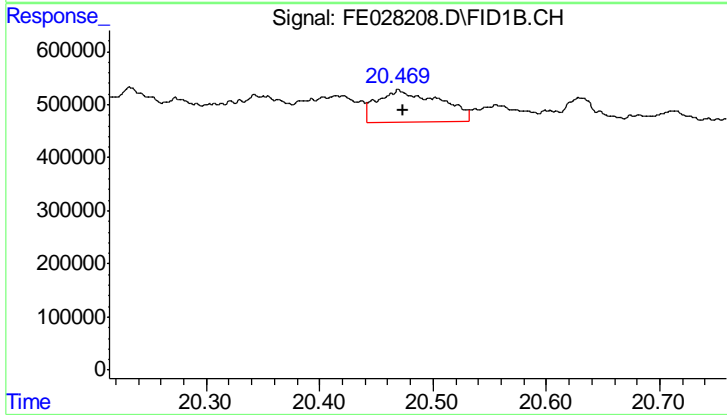


#18 n-Dotriacontane (C32)  
R.T.: 18.943 min  
Delta R.T.: 0.000 min  
Response: 692151  
Conc: 3.78 ug/ml



#19 n-Tetratriacontane (C34)

R.T.: 19.761 min  
Delta R.T.: 0.032 min  
Response: 2983408  
Conc: 17.45 ug/ml



#20 n-Hexatriacontane (C36)

R.T.: 20.470 min  
Delta R.T.: -0.004 min  
Response: 2322178  
Conc: 14.14 ug/ml