

Data Path : Z:\pestpcbsrv\HPCHEM1\FID\_E\Data\FE071124AL\  
 Data File : FE049086.D  
 Signal(s) : FID1B.ch  
 Acq On : 11 Jul 2024 23:23  
 Operator : YP\AJ  
 Sample : P3208-01  
 Misc :  
 ALS Vial : 21 Sample Multiplier: 1

Instrument :  
 FID\_E  
 ClientSampleId :

Integration File: autoint1.e  
 Quant Time: Jul 12 01:32:42 2024  
 Quant Method : Z:\pestpcbsrv\HPCHEM1\FID\_E\methods\Aliphatic EPH 062124.M  
 Quant Title : GC Extractables  
 QLast Update : Thu Jun 20 17:53:58 2024  
 Response via : Initial Calibration  
 Integrator: ChemStation

Volume Inj. : 1 ul  
 Signal Phase : Rxi-1ms  
 Signal Info : 20M x 0.18mm x 0.18um

Compound	R.T.	Response	Conc Units
-----			
System Monitoring Compounds			
9) S ortho-Terphenyl (SURR)	11.921	5478218	32.763 ug/ml
Spiked Amount	50.000	Recovery	= 65.53%
12) S 1-chlorooctadecane (S...	13.357	4627393	35.986 ug/ml
Spiked Amount	50.000	Recovery	= 71.97%
Target Compounds			
10) T n-Eicosane (C20)	12.975f	133647	0.862 ug/ml
14) T n-Tetracosane (C24)	15.195	145331	0.967 ug/ml
15) T n-Hexacosane (C26)	16.227	46982	0.318 ug/ml
18) T n-Dotriacontane (C32)	18.889	123581	0.864 ug/ml
19) T n-Tetratriacontane (C34)	19.743f	41656	0.301 ug/ml
20) T n-Hexatriacontane (C36)	20.479f	213783	1.645 ug/ml
-----			

(f)=RT Delta > 1/2 Window

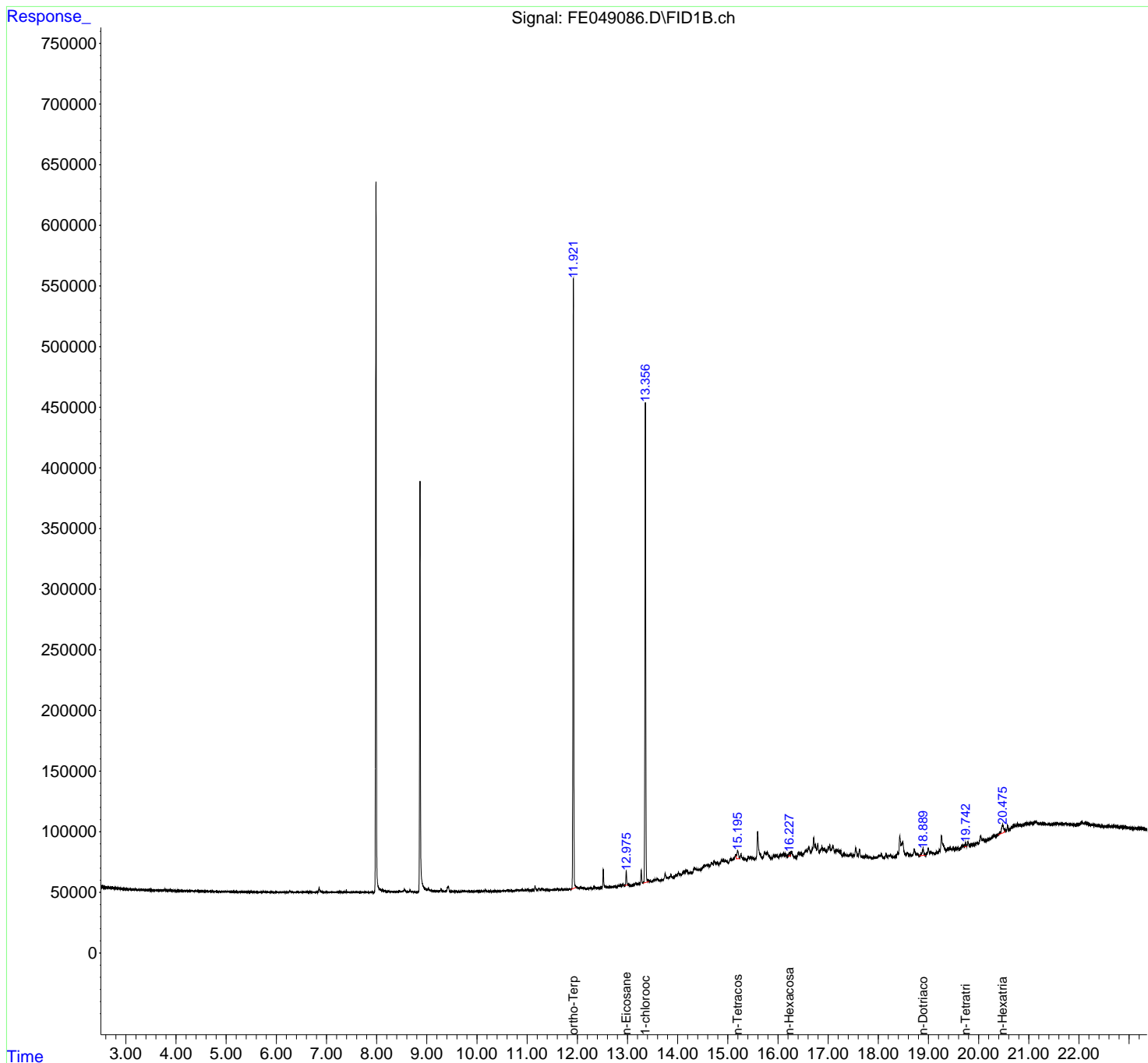
(m)=manual int.

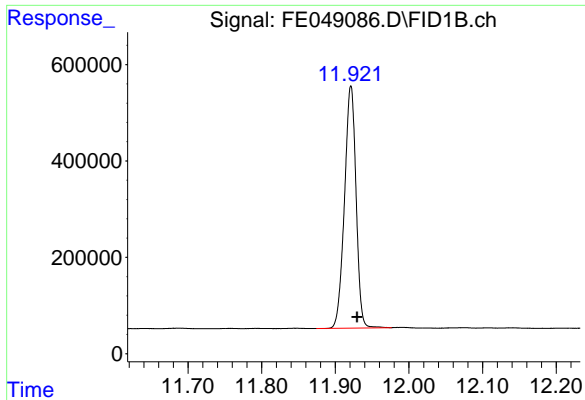
Data Path : Z:\pestpcbsrv\HPCHEM1\FID\_E\Data\FE071124AL\  
Data File : FE049086.D  
Signal(s) : FID1B.ch  
Acq On : 11 Jul 2024 23:23  
Operator : YP\AJ  
Sample : P3208-01  
Misc :  
ALS Vial : 21 Sample Multiplier: 1

Instrument :  
FID\_E  
ClientSampleId :

Integration File: autoint1.e  
Quant Time: Jul 12 01:32:42 2024  
Quant Method : Z:\pestpcbsrv\HPCHEM1\FID\_E\methods\Aliphatic EPH 062124.M  
Quant Title : GC Extractables  
QLast Update : Thu Jun 20 17:53:58 2024  
Response via : Initial Calibration  
Integrator: ChemStation

Volume Inj. : 1 ul  
Signal Phase : Rxi-1ms  
Signal Info : 20M x 0.18mm x 0.18um

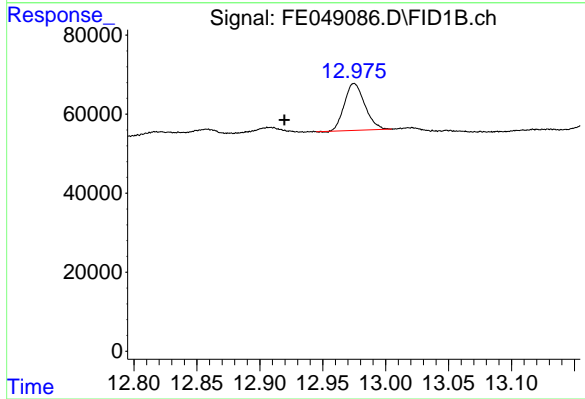




#9 ortho-Terphenyl (SURR)

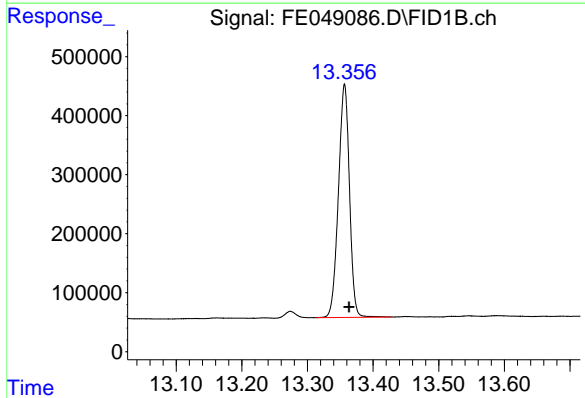
R.T.: 11.921 min  
Delta R.T.: -0.008 min  
Response: 5478218  
Conc: 32.76 ug/ml

Instrument :  
FID\_E  
ClientSampleId :



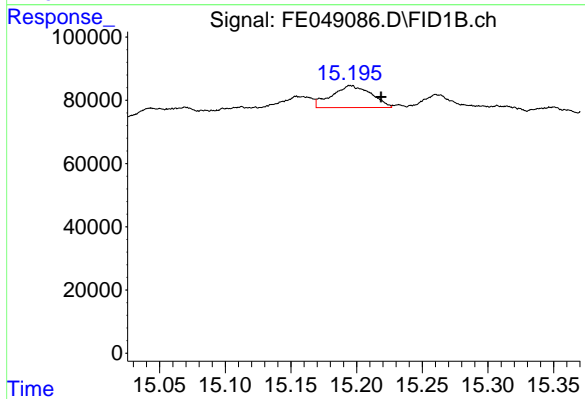
#10 n-Eicosane (C20)

R.T.: 12.975 min  
Delta R.T.: 0.055 min  
Response: 133647  
Conc: 0.86 ug/ml



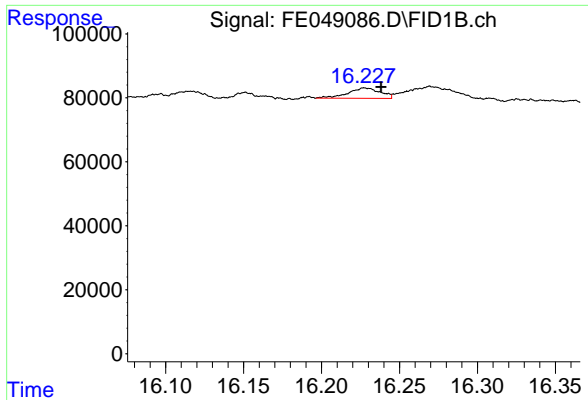
#12 1-chlorooctadecane (SURR)

R.T.: 13.357 min  
Delta R.T.: -0.007 min  
Response: 4627393  
Conc: 35.99 ug/ml



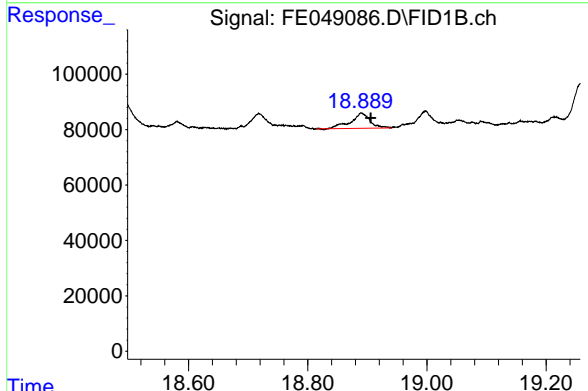
#14 n-Tetracosane (C24)

R.T.: 15.195 min  
Delta R.T.: -0.023 min  
Response: 145331  
Conc: 0.97 ug/ml

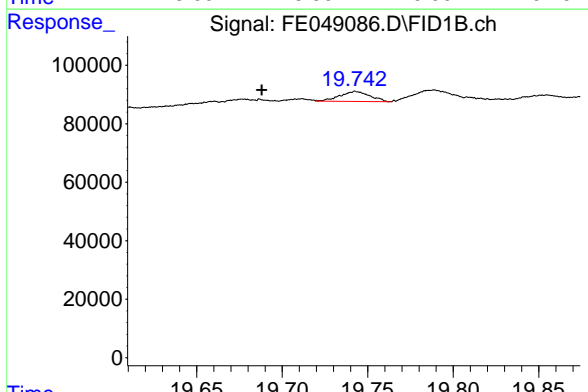


#15 n-Hexacosane (C26)  
 R.T.: 16.227 min  
 Delta R.T.: -0.011 min  
 Response: 46982  
 Conc: 0.32 ug/ml

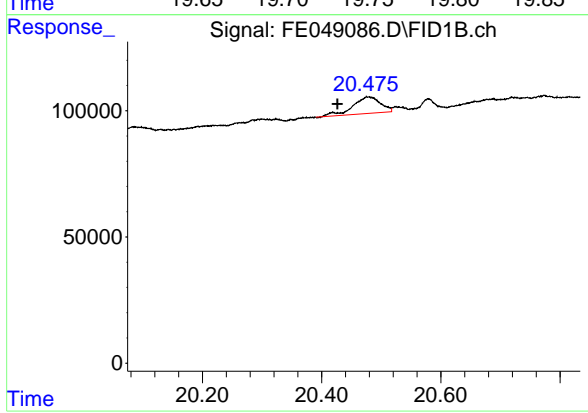
Instrument :  
 FID\_E  
 ClientSampleId :



#18 n-Dotriacontane (C32)  
 R.T.: 18.889 min  
 Delta R.T.: -0.016 min  
 Response: 123581  
 Conc: 0.86 ug/ml



#19 n-Tetratriacontane (C34)  
 R.T.: 19.743 min  
 Delta R.T.: 0.055 min  
 Response: 41656  
 Conc: 0.30 ug/ml



#20 n-Hexatriacontane (C36)  
 R.T.: 20.479 min  
 Delta R.T.: 0.053 min  
 Response: 213783  
 Conc: 1.64 ug/ml