

Data Path : Z:\pestpcbsrv\HPCHEM1\FID_E\Data\FE071625AL\
 Data File : FE054872.D
 Signal(s) : FID1B.ch
 Acq On : 16 Jul 2025 10:21
 Operator : YP\AJ
 Sample : I.BLK
 Misc :
 ALS Vial : 1 Sample Multiplier: 1

Instrument :
 FID_E
 ClientSampleId :

Integration File: autoint1.e
 Quant Time: Jul 16 12:23:09 2025
 Quant Method : Z:\pestpcbsrv\HPCHEM1\FID_E\methods\Aliphatic EPH 062725.M
 Quant Title : GC Extractables
 QLast Update : Tue Jul 08 07:45:12 2025
 Response via : Initial Calibration
 Integrator: ChemStation

Volume Inj. : 1 ul
 Signal Phase : Rxi-1ms
 Signal Info : 20M x 0.18mm x 0.18um

Compound	R.T.	Response	Conc Units

System Monitoring Compounds			
Target Compounds			
17) T n-Tricontane (C30)	18.243	29782	0.189 ug/ml
18) T n-Dotriacontane (C32)	19.078	38662	0.239 ug/ml
19) T n-Tetratriacontane (C34)	19.863	5194	0.034 ug/ml

(f)=RT Delta > 1/2 Window

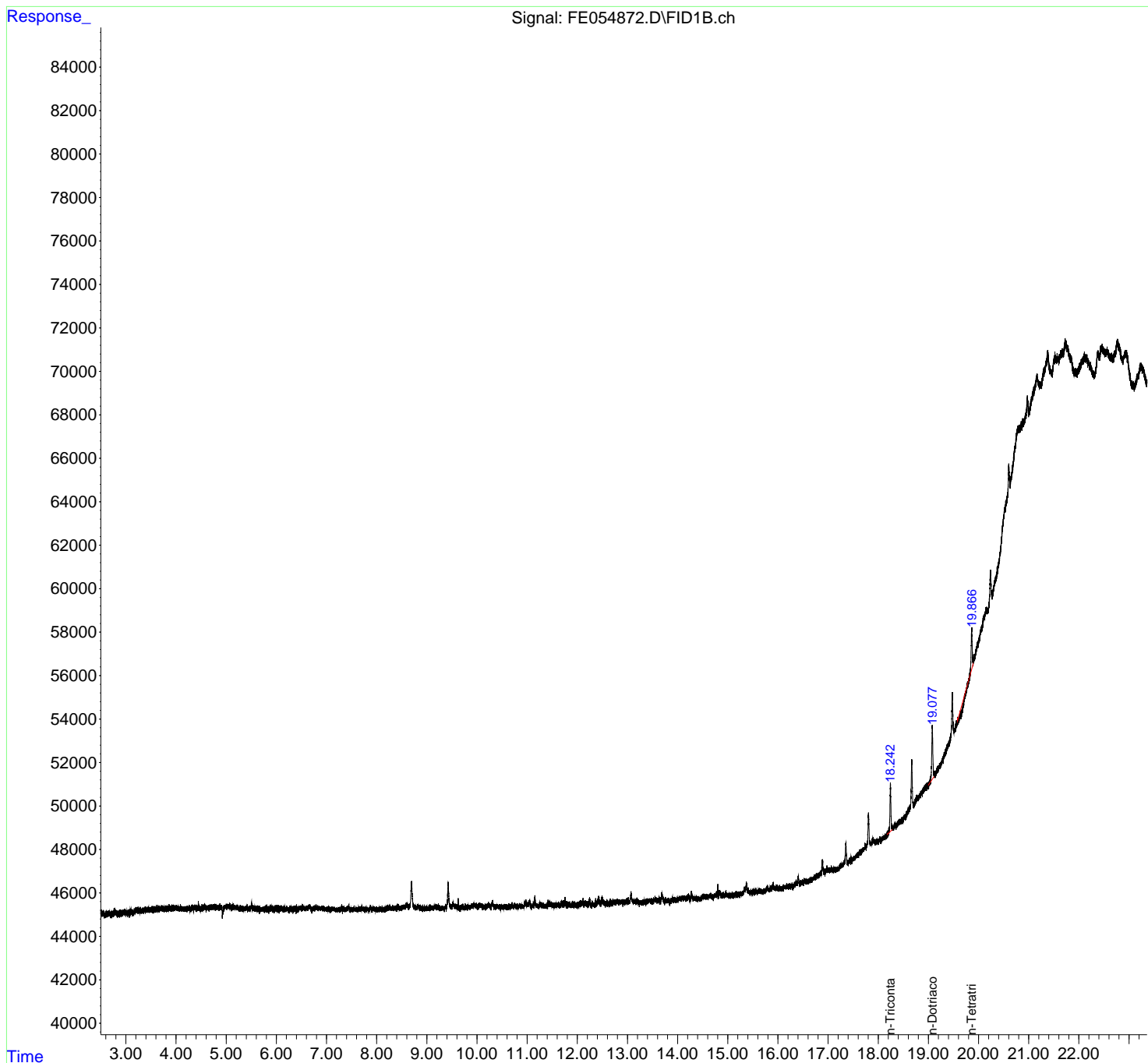
(m)=manual int.

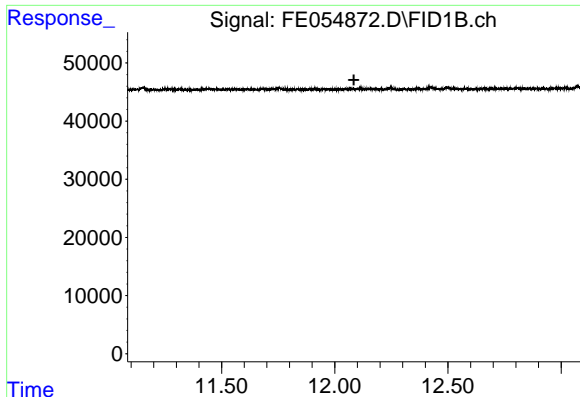
Data Path : Z:\pestpcbsrv\HPCHEM1\FID_E\Data\FE071625AL\
Data File : FE054872.D
Signal(s) : FID1B.ch
Acq On : 16 Jul 2025 10:21
Operator : YP\AJ
Sample : I.BLK
Misc :
ALS Vial : 1 Sample Multiplier: 1

Instrument :
FID_E
ClientSampleId :

Integration File: autoint1.e
Quant Time: Jul 16 12:23:09 2025
Quant Method : Z:\pestpcbsrv\HPCHEM1\FID_E\methods\Aliphatic EPH 062725.M
Quant Title : GC Extractables
QLast Update : Tue Jul 08 07:45:12 2025
Response via : Initial Calibration
Integrator: ChemStation

Volume Inj. : 1 ul
Signal Phase : Rxi-1ms
Signal Info : 20M x 0.18mm x 0.18um

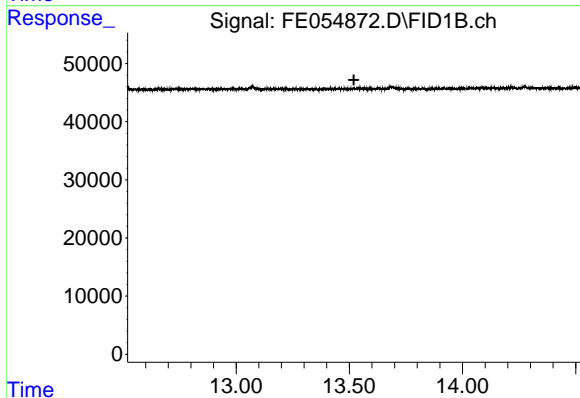




#9 ortho-Terphenyl (SURR)

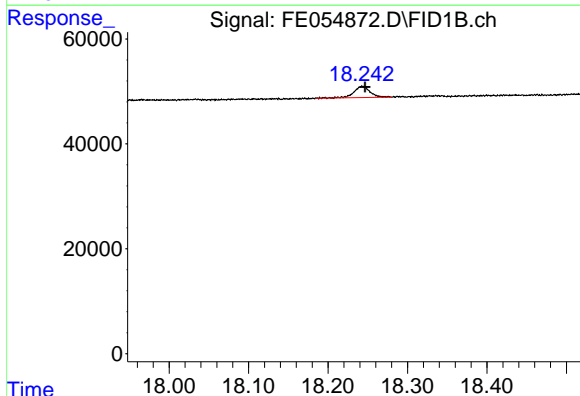
R.T.: 0.000 min
 Exp R.T. : 12.085 min
 Response: 0
 Conc: N.D.

Instrument :
 FID_E
 ClientSampleId :



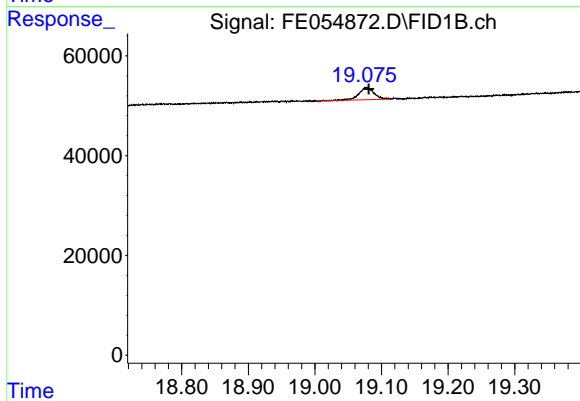
#12 1-chlorooctadecane (SURR)

R.T.: 0.000 min
 Exp R.T. : 13.520 min
 Response: 0
 Conc: N.D.



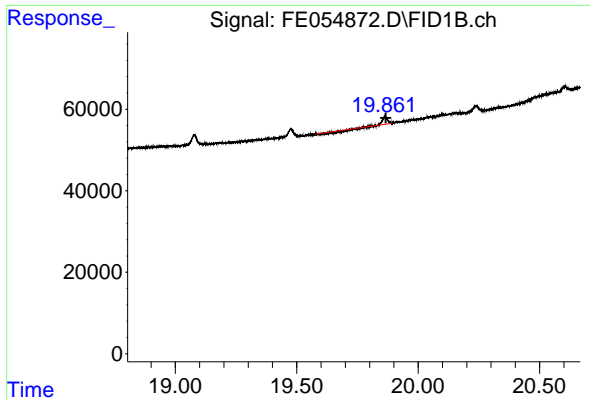
#17 n-Tricontane (C30)

R.T.: 18.243 min
 Delta R.T.: -0.003 min
 Response: 29782
 Conc: 0.19 ug/ml



#18 n-Dotriacontane (C32)

R.T.: 19.078 min
 Delta R.T.: -0.003 min
 Response: 38662
 Conc: 0.24 ug/ml



#19 n-Tetratriacontane (C34)

R.T.: 19.863 min
Delta R.T.: -0.003 min
Response: 5194
Conc: 0.03 ug/ml

Instrument :
FID_E
ClientSampleId :