

Data Path : Z:\pestpcbsrv\HPCHEM1\FID\_E\Data\FE071723AL\  
Data File : FE043250.D  
Signal(s) : FID1B.ch  
Acq On : 17 Jul 2023 10:55  
Operator : YP\AJ  
Sample : 03607-02DL 50X  
Misc :  
ALS Vial : 12 Sample Multiplier: 1

Instrument :  
FID\_E  
ClientSampleId :  
SW-2DL

Integration File: autoint1.e  
Quant Time: Jul 18 04:14:35 2023  
Quant Method : Z:\pestpcbsrv\HPCHEM1\FID\_E\methods\Aliphatic EPH 071323.M  
Quant Title : GC Extractables  
QLast Update : Thu Jul 13 03:02:53 2023  
Response via : Initial Calibration  
Integrator: ChemStation

Volume Inj. : 1 ul  
Signal Phase : Rxi-1ms  
Signal Info : 20M x 0.18mm x 0.18um

Compound	R.T.	Response	Conc Units
----------	------	----------	------------

-----  
System Monitoring Compounds

Target Compounds  
-----

(f)=RT Delta > 1/2 Window

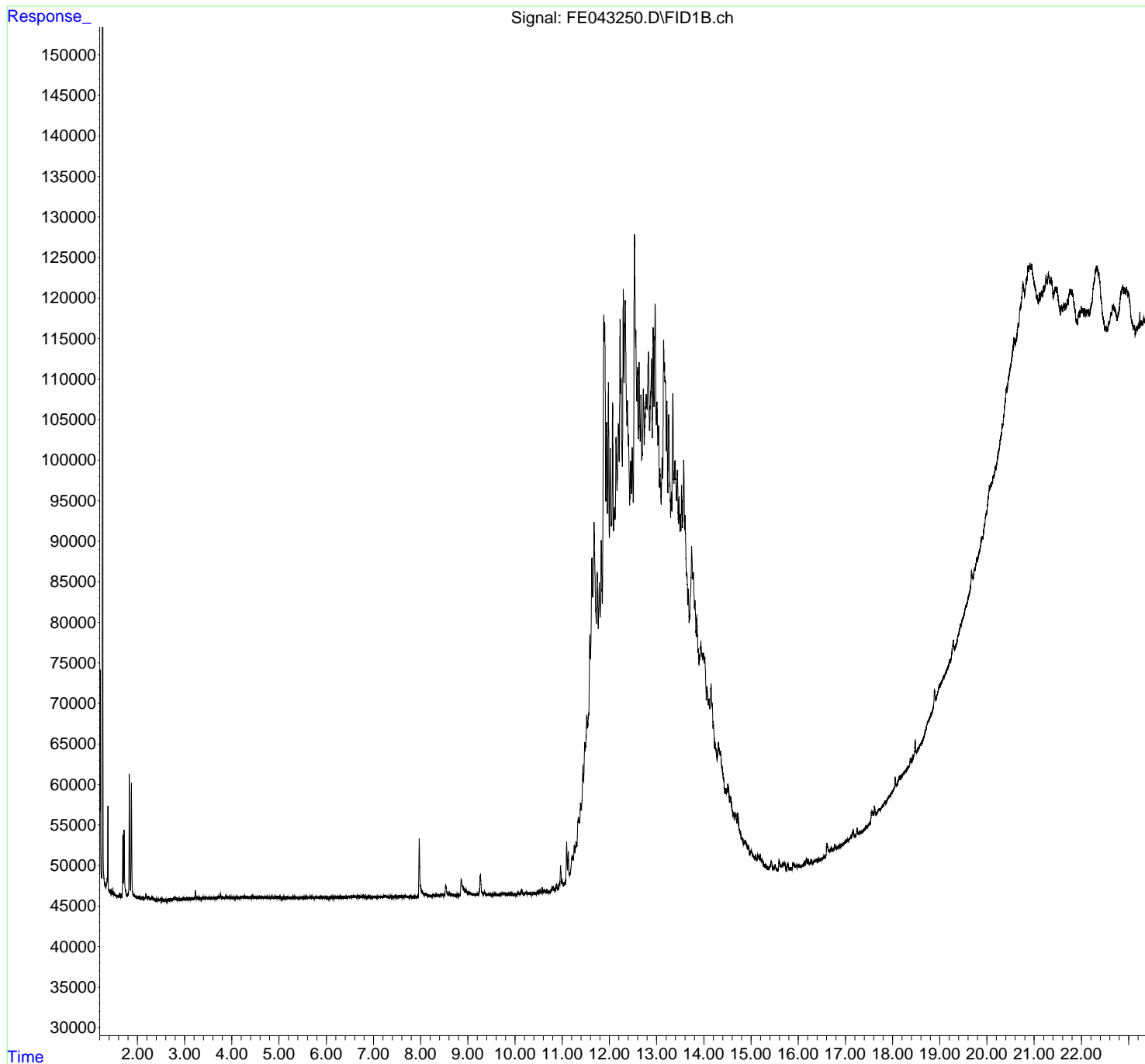
(m)=manual int.

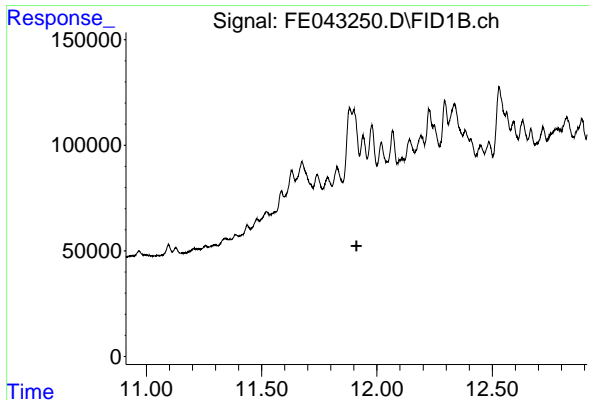
Data Path : Z:\pestpcbsrv\HPCHEM1\FID\_E\Data\FE071723AL\  
Data File : FE043250.D  
Signal(s) : FID1B.ch  
Acq On : 17 Jul 2023 10:55  
Operator : YP\AJ  
Sample : 03607-02DL 50X  
Misc :  
ALS Vial : 12 Sample Multiplier: 1

Instrument :  
FID\_E  
ClientSampleId :  
SW-2DL

Integration File: autoint1.e  
Quant Time: Jul 18 04:14:35 2023  
Quant Method : Z:\pestpcbsrv\HPCHEM1\FID\_E\methods\Aliphatic EPH 071323.M  
Quant Title : GC Extractables  
QLast Update : Thu Jul 13 03:02:53 2023  
Response via : Initial Calibration  
Integrator: ChemStation

Volume Inj. : 1 ul  
Signal Phase : Rxi-1ms  
Signal Info : 20M x 0.18mm x 0.18um

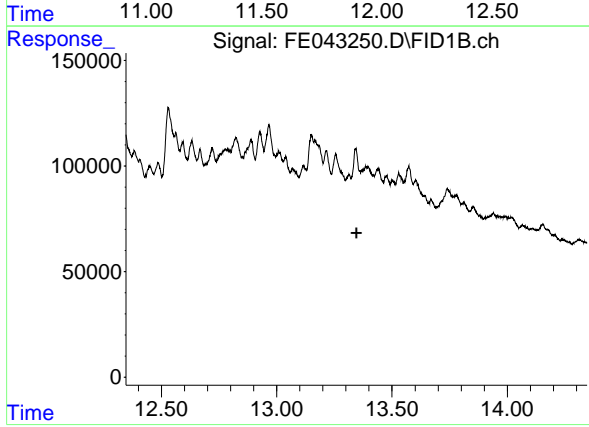




#9 ortho-Terphenyl (SURR)

R.T.: 0.000 min  
Exp R.T. : 11.911 min  
Response: 0  
Conc: N.D.

Instrument :  
FID\_E  
ClientSampleId :  
SW-2DL



#12 1-chlorooctadecane (SURR)

R.T.: 0.000 min  
Exp R.T. : 13.346 min  
Response: 0  
Conc: N.D.