

Data Path : Z:\pestpcbsrv\HPCHEM1\FID_E\Data\FE071723AL\
 Data File : FE043268.D
 Signal(s) : FID1B.ch
 Acq On : 17 Jul 2023 20:42
 Operator : YP\AJ
 Sample : 03638-17
 Misc :
 ALS Vial : 32 Sample Multiplier: 1

Instrument :
 FID_E
 ClientSampleId :
 TP2-E

Integration File: autoint1.e
 Quant Time: Jul 18 04:24:27 2023
 Quant Method : Z:\pestpcbsrv\HPCHEM1\FID_E\methods\Aliphatic EPH 071323.M
 Quant Title : GC Extractables
 QLast Update : Thu Jul 13 03:02:53 2023
 Response via : Initial Calibration
 Integrator: ChemStation

Volume Inj. : 1 ul
 Signal Phase : Rxi-1ms
 Signal Info : 20M x 0.18mm x 0.18um

Compound	R.T.	Response	Conc Units

System Monitoring Compounds			
9) S ortho-Terphenyl (SURR)	11.901	5567387	31.091 ug/ml
Spiked Amount	50.000	Recovery	= 62.18%
12) S 1-chlorooctadecane (S...	13.338	4641693	35.326 ug/ml
Spiked Amount	50.000	Recovery	= 70.65%

Target Compounds

(f)=RT Delta > 1/2 Window

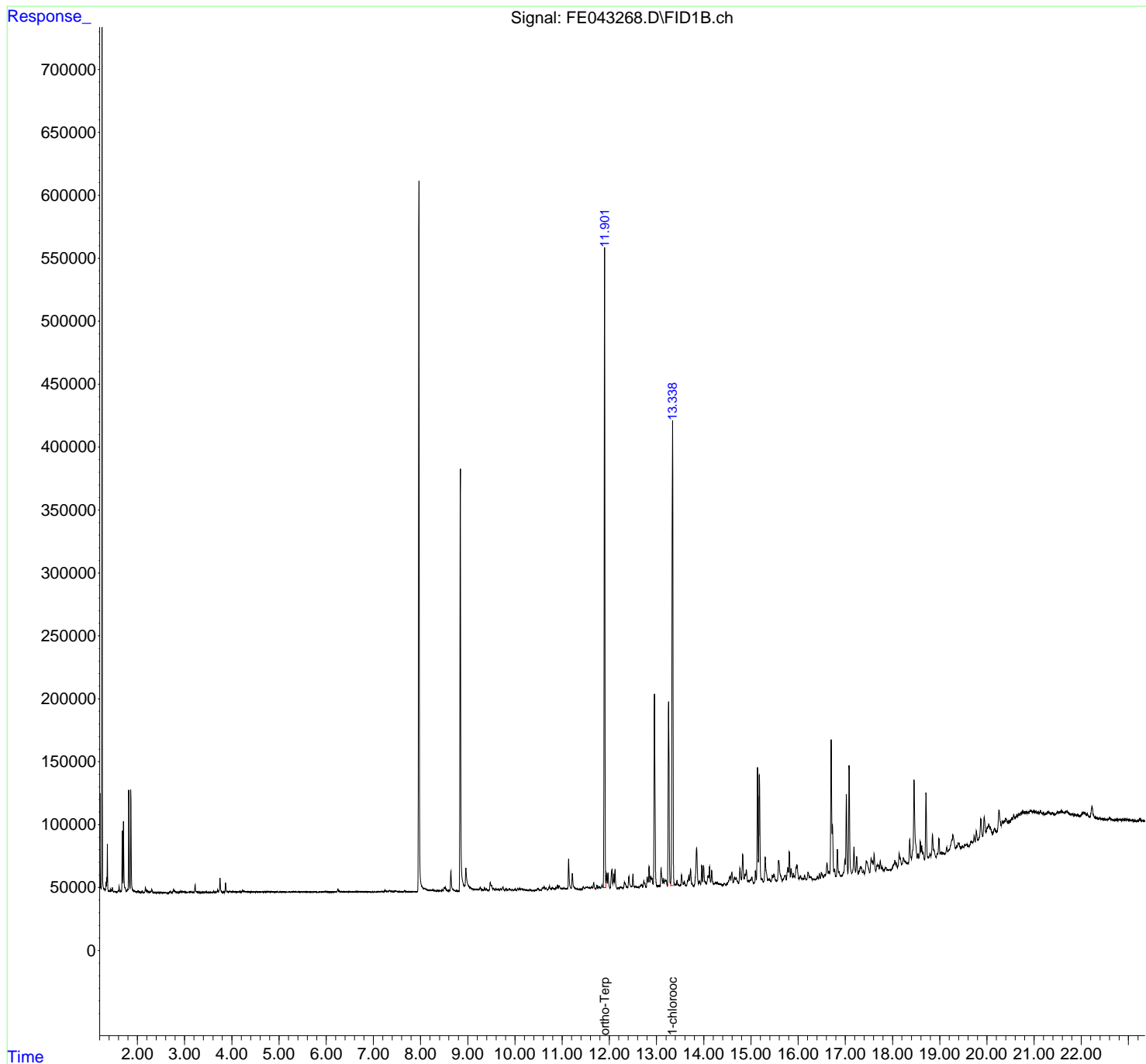
(m)=manual int.

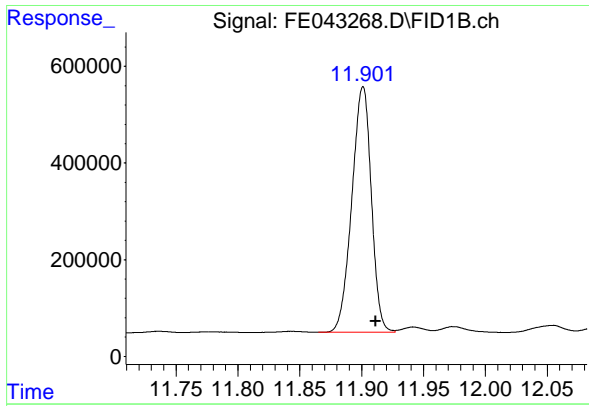
Data Path : Z:\pestpcbsrv\HPCHEM1\FID_E\Data\FE071723AL\
 Data File : FE043268.D
 Signal(s) : FID1B.ch
 Acq On : 17 Jul 2023 20:42
 Operator : YP\AJ
 Sample : 03638-17
 Misc :
 ALS Vial : 32 Sample Multiplier: 1

Instrument :
 FID_E
 ClientSampleId :
 TP2-E

Integration File: autoint1.e
 Quant Time: Jul 18 04:24:27 2023
 Quant Method : Z:\pestpcbsrv\HPCHEM1\FID_E\methods\Aliphatic EPH 071323.M
 Quant Title : GC Extractables
 QLast Update : Thu Jul 13 03:02:53 2023
 Response via : Initial Calibration
 Integrator: ChemStation

Volume Inj. : 1 ul
 Signal Phase : Rxi-1ms
 Signal Info : 20M x 0.18mm x 0.18um

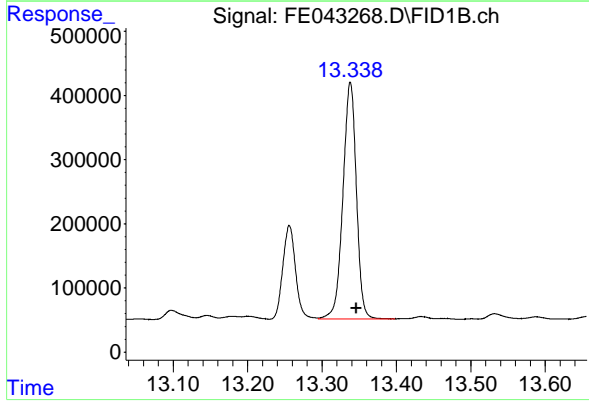




#9 ortho-Terphenyl (SURR)

R.T.: 11.901 min
Delta R.T.: -0.010 min
Response: 5567387
Conc: 31.09 ug/ml

Instrument :
FID_E
ClientSampleId :
TP2-E



#12 1-chlorooctadecane (SURR)

R.T.: 13.338 min
Delta R.T.: -0.008 min
Response: 4641693
Conc: 35.33 ug/ml