

Data Path : Z:\pestpcbsrv\HPCHEM1\FID_E\Data\FE071823AL\
 Data File : FE043308.D
 Signal(s) : FID1B.ch
 Acq On : 19 Jul 2023 04:53
 Operator : YP\AJ
 Sample : 03648-02
 Misc :
 ALS Vial : 36 Sample Multiplier: 1

Instrument :
 FID_E
 ClientSampleId :

Integration File: autoint1.e
 Quant Time: Jul 19 06:31:15 2023
 Quant Method : Z:\pestpcbsrv\HPCHEM1\FID_E\methods\Aliphatic EPH 071323.M
 Quant Title : GC Extractables
 QLast Update : Thu Jul 13 03:02:53 2023
 Response via : Initial Calibration
 Integrator: ChemStation

Volume Inj. : 1 ul
 Signal Phase : Rxi-1ms
 Signal Info : 20M x 0.18mm x 0.18um

Compound	R.T.	Response	Conc Units
System Monitoring Compounds			
9) S ortho-Terphenyl (SURR)	11.895	7040785	39.319 ug/ml
Spiked Amount	50.000	Recovery	= 78.64%
12) S 1-chlorooctadecane (S...	13.331	4432510	33.734 ug/ml
Spiked Amount	50.000	Recovery	= 67.47%

Target Compounds

(f)=RT Delta > 1/2 Window

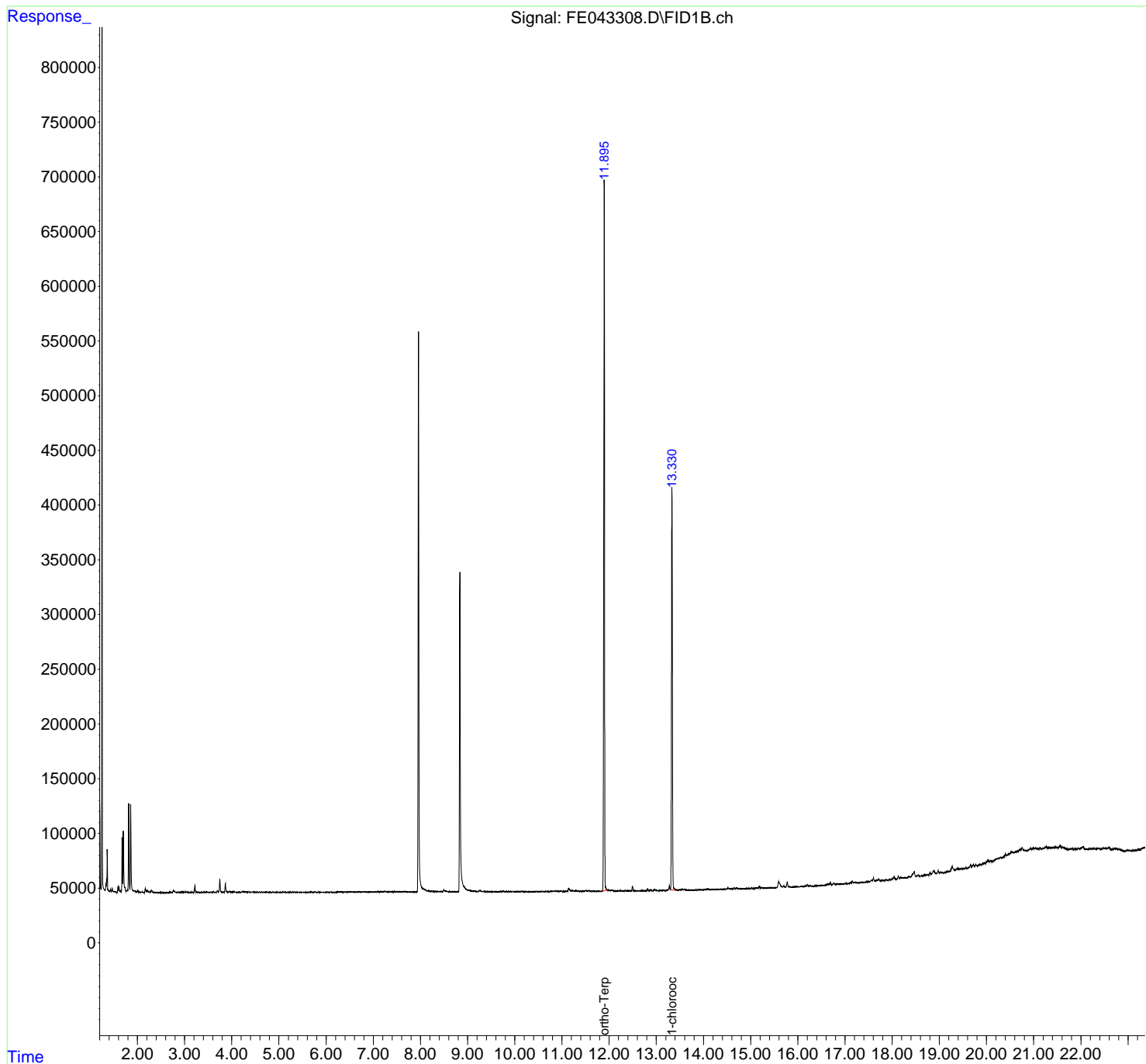
(m)=manual int.

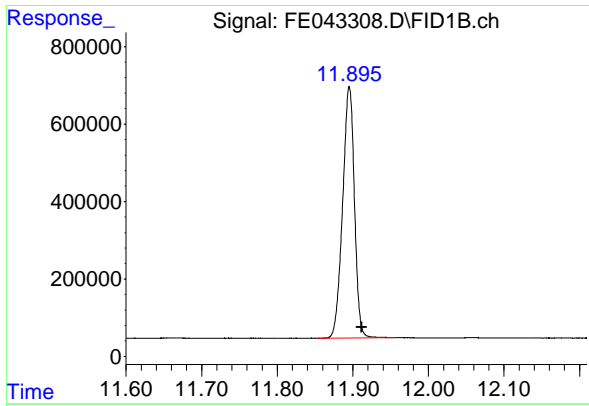
Data Path : Z:\pestpcbsrv\HPCHEM1\FID_E\Data\FE071823AL\
 Data File : FE043308.D
 Signal(s) : FID1B.ch
 Acq On : 19 Jul 2023 04:53
 Operator : YP\AJ
 Sample : 03648-02
 Misc :
 ALS Vial : 36 Sample Multiplier: 1

Instrument :
 FID_E
 ClientSampleId :

Integration File: autoint1.e
 Quant Time: Jul 19 06:31:15 2023
 Quant Method : Z:\pestpcbsrv\HPCHEM1\FID_E\methods\Aliphatic EPH 071323.M
 Quant Title : GC Extractables
 QLast Update : Thu Jul 13 03:02:53 2023
 Response via : Initial Calibration
 Integrator: ChemStation

Volume Inj. : 1 ul
 Signal Phase : Rxi-1ms
 Signal Info : 20M x 0.18mm x 0.18um

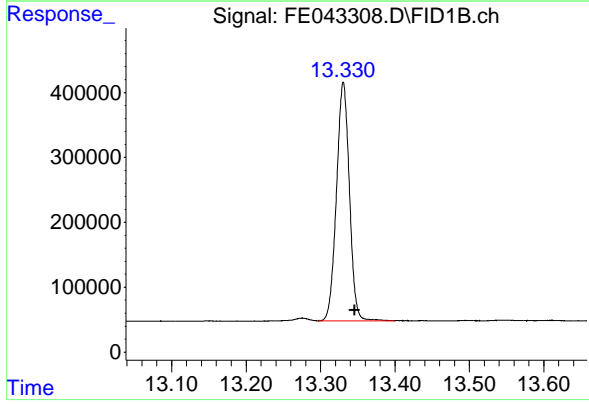




#9 ortho-Terphenyl (SURR)

R.T.: 11.895 min
Delta R.T.: -0.016 min
Response: 7040785
Conc: 39.32 ug/ml

Instrument :
FID_E
ClientSampleId :



#12 1-chlorooctadecane (SURR)

R.T.: 13.331 min
Delta R.T.: -0.015 min
Response: 4432510
Conc: 33.73 ug/ml