

Data Path : Z:\pestpcbsrv\HPCHEM1\FID\_E\Data\FE071924AL\  
 Data File : FE049209.D  
 Signal(s) : FID1B.ch  
 Acq On : 19 Jul 2024 17:32  
 Operator : YP\AJ  
 Sample : I.BLK  
 Misc :  
 ALS Vial : 1 Sample Multiplier: 1

Instrument :  
 FID\_E  
 ClientSampleId :  
 I.BLK

Integration File: autoint1.e  
 Quant Time: Jul 20 00:34:53 2024  
 Quant Method : Z:\pestpcbsrv\HPCHEM1\FID\_E\methods\Aliphatic EPH 071724.M  
 Quant Title : GC Extractables  
 QLast Update : Wed Jul 17 14:26:40 2024  
 Response via : Initial Calibration  
 Integrator: ChemStation

Volume Inj. : 1 u1  
 Signal Phase : Rxi-1ms  
 Signal Info : 20M x 0.18mm x 0.18um

Compound	R.T.	Response	Conc Units
----------	------	----------	------------

-----  
 System Monitoring Compounds

Target Compounds  
 -----

(f)=RT Delta > 1/2 Window

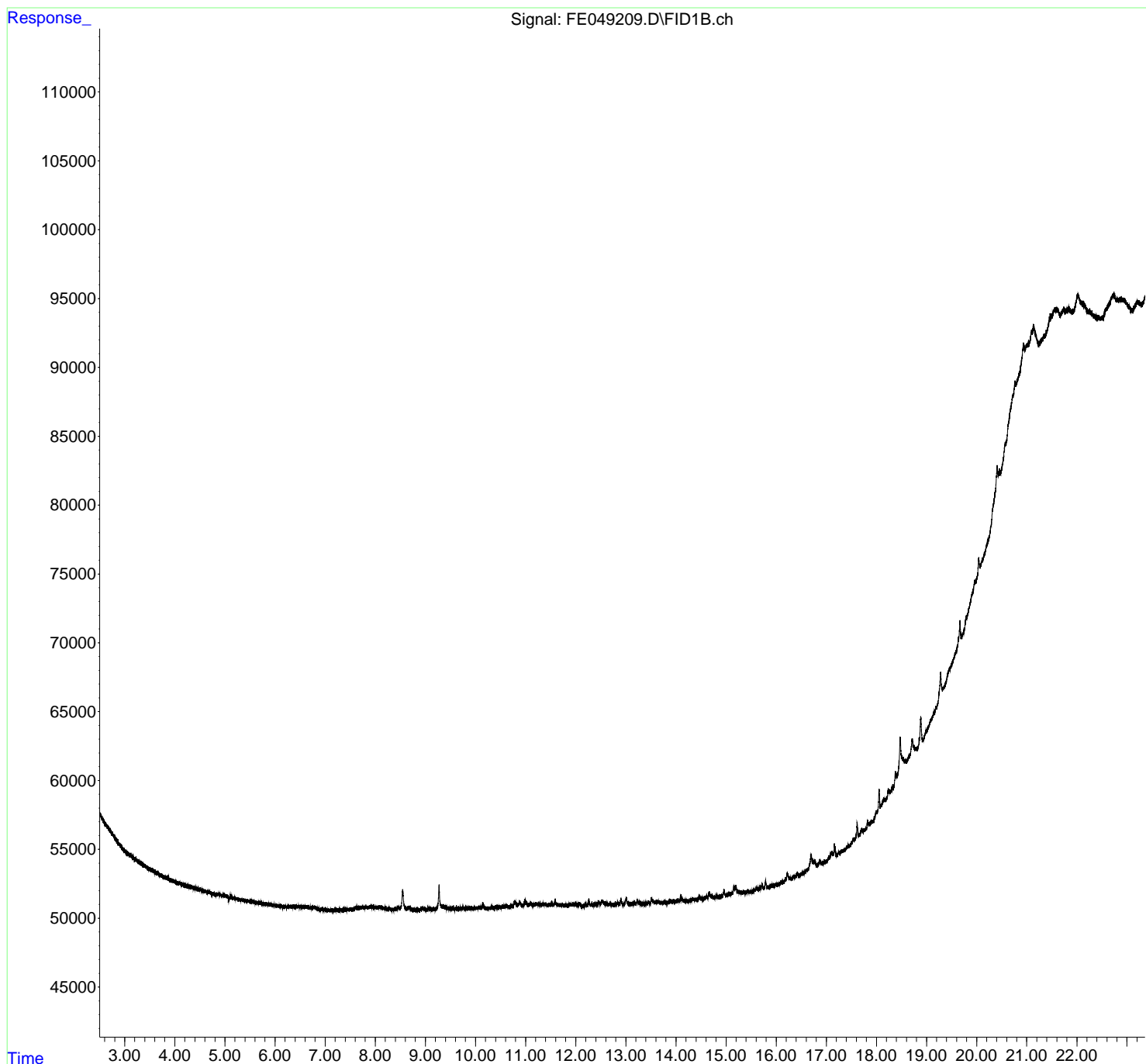
(m)=manual int.

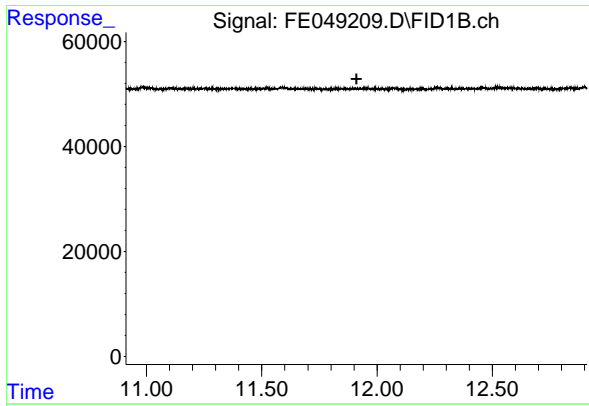
Data Path : Z:\pestpcbsrv\HPCHEM1\FID\_E\Data\FE071924AL\  
 Data File : FE049209.D  
 Signal(s) : FID1B.ch  
 Acq On : 19 Jul 2024 17:32  
 Operator : YP\AJ  
 Sample : I.BLK  
 Misc :  
 ALS Vial : 1 Sample Multiplier: 1

Instrument :  
 FID\_E  
 ClientSampleId :  
 I.BLK

Integration File: autoint1.e  
 Quant Time: Jul 20 00:34:53 2024  
 Quant Method : Z:\pestpcbsrv\HPCHEM1\FID\_E\methods\Aliphatic EPH 071724.M  
 Quant Title : GC Extractables  
 QLast Update : Wed Jul 17 14:26:40 2024  
 Response via : Initial Calibration  
 Integrator: ChemStation

Volume Inj. : 1 ul  
 Signal Phase : Rxi-1ms  
 Signal Info : 20M x 0.18mm x 0.18um

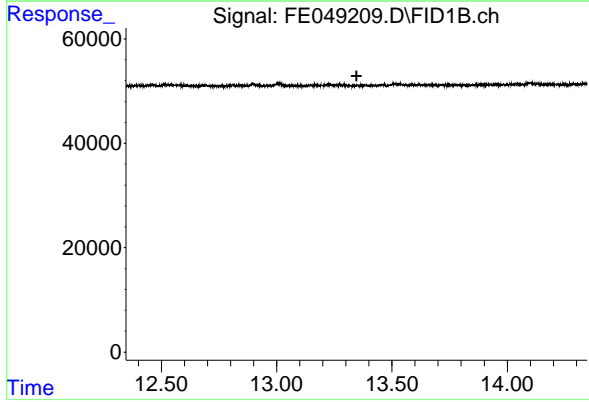




#9 ortho-Terphenyl (SURR)

R.T.: 0.000 min  
Exp R.T. : 11.911 min  
Response: 0  
Conc: N.D.

Instrument :  
FID\_E  
ClientSampleId :  
I.BLK



#12 1-chlorooctadecane (SURR)

R.T.: 0.000 min  
Exp R.T. : 13.346 min  
Response: 0  
Conc: N.D.