

Data Path : Z:\pestpcbsrv\HPCHEM1\FID_E\Data\FE072023AL\
 Data File : FE043368.D
 Signal(s) : FID1B.ch
 Acq On : 20 Jul 2023 23:51
 Operator : YP\AJ
 Sample : 20 PPM ALIPHATIC HC STD
 Misc :
 ALS Vial : 2 Sample Multiplier: 1

Instrument :
 FID_E
 ClientSampleId :
 20 PPM ALIPHATIC HC STD

Integration File: autoint1.e
 Quant Time: Jul 21 04:30:13 2023
 Quant Method : Z:\pestpcbsrv\HPCHEM1\FID_E\methods\Aliphatic EPH 071323.M
 Quant Title : GC Extractables
 QLast Update : Thu Jul 13 03:02:53 2023
 Response via : Initial Calibration
 Integrator: ChemStation

Volume Inj. : 1 ul
 Signal Phase : Rxi-1ms
 Signal Info : 20M x 0.18mm x 0.18um

Compound	R.T.	Response	Conc Units

System Monitoring Compounds			
9) S ortho-Terphenyl (SURR)	11.890	3582538	20.007 ug/ml
Spiked Amount	50.000	Recovery	= 40.01%
12) S 1-chlorooctadecane (S...	13.326	2650691	20.173 ug/ml
Spiked Amount	50.000	Recovery	= 40.35%
Target Compounds			
1) T n-Nonane (C9)	3.270	3040224	19.912 ug/ml
2) T n-Decane (C10)	4.522	3133440	20.100 ug/ml
3) T A~Naphthalene (C11.7)	6.232	3259427	20.256 ug/ml
4) T n-Dodecane (C12)	6.693	3164551	20.083 ug/ml
5) T A~2-methylnaphthalene...	7.330	3083733	20.322 ug/ml
6) T n-Tetradecane (C14)	8.521	3146914	19.896 ug/ml
7) T n-Hexadecane (C16)	10.128	3242172	20.034 ug/ml
8) T n-Octadecane (C18)	11.571	3259413	19.994 ug/ml
10) T n-Eicosane (C20)	12.881	3112690	20.034 ug/ml
11) T n-Heneicosane (C21)	13.492	3028493	19.990 ug/ml
13) T n-Docosane (C22)	14.078	2991215	20.015 ug/ml
14) T n-Tetracosane (C24)	15.183	2935518	19.989 ug/ml
15) T n-Hexacosane (C26)	16.202	2860996	20.087 ug/ml
16) T n-Octacosane (C28)	17.153	2819088	20.036 ug/ml
17) T n-Tricontane (C30)	18.039	2964642	20.125 ug/ml
18) T n-Dotriacontane (C32)	18.873	2995289	20.214 ug/ml
19) T n-Tetratriacontane (C34)	19.657	2907831	20.148 ug/ml
20) T n-Hexatriacontane (C36)	20.396	2781329	18.923 ug/ml
21) T n-Octatriacontane (C38)	21.133	2761646	19.359 ug/ml
22) T n-Tetracontane (C40)	22.041	2802557	18.990 ug/ml

(f)=RT Delta > 1/2 Window

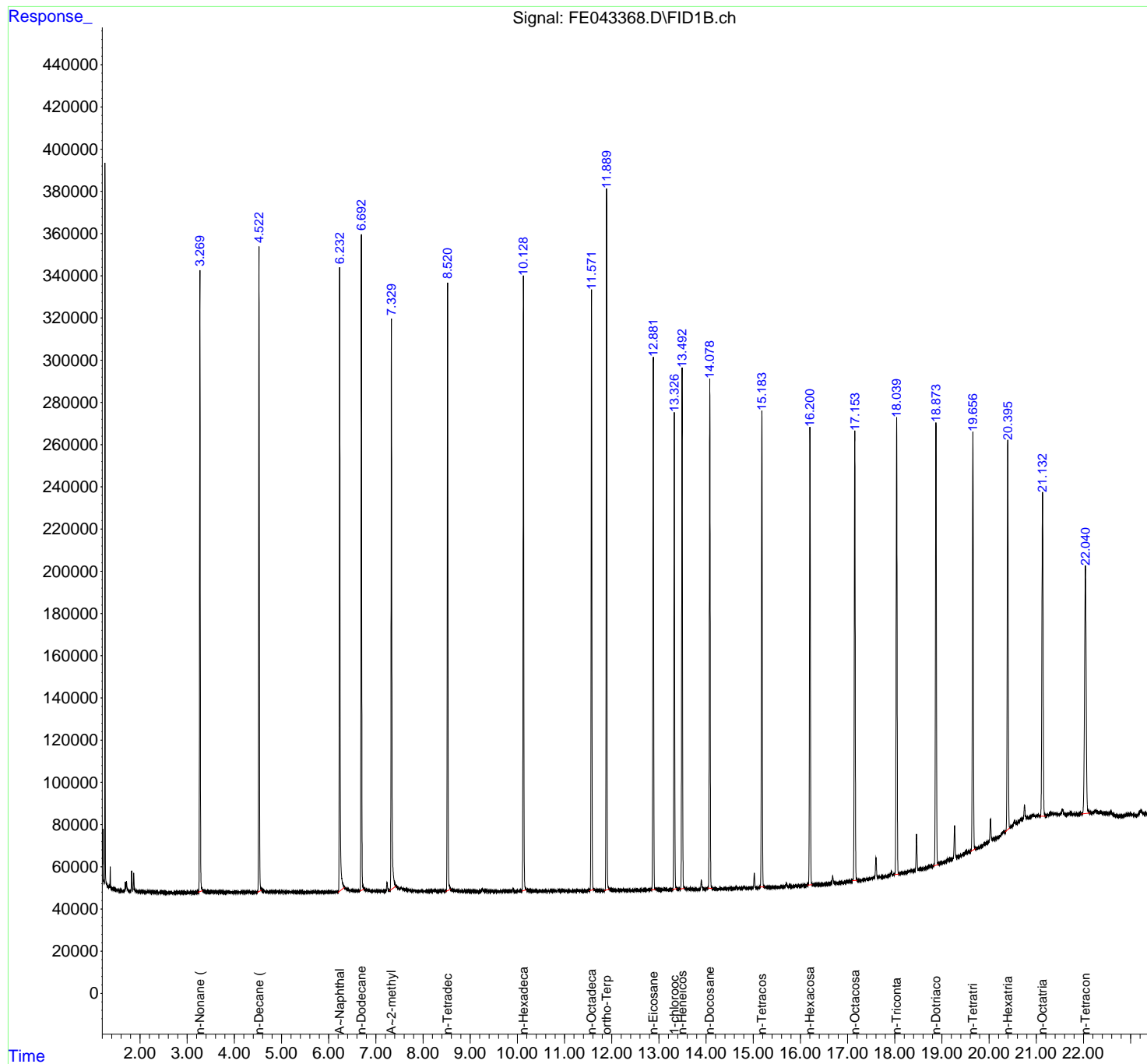
(m)=manual int.

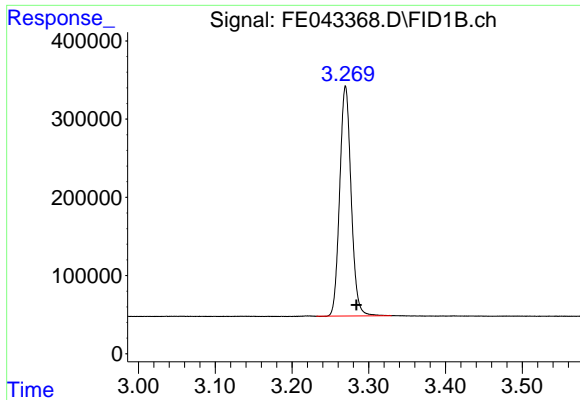
Data Path : Z:\pestpcbsrv\HPCHEM1\FID_E\Data\FE072023AL\
Data File : FE043368.D
Signal(s) : FID1B.ch
Acq On : 20 Jul 2023 23:51
Operator : YP\AJ
Sample : 20 PPM ALIPHATIC HC STD
Misc :
ALS Vial : 2 Sample Multiplier: 1

Instrument :
FID_E
ClientSampleId :
20 PPM ALIPHATIC HC STD

Integration File: autoint1.e
Quant Time: Jul 21 04:30:13 2023
Quant Method : Z:\pestpcbsrv\HPCHEM1\FID_E\methods\Aliphatic EPH 071323.M
Quant Title : GC Extractables
QLast Update : Thu Jul 13 03:02:53 2023
Response via : Initial Calibration
Integrator: ChemStation

Volume Inj. : 1 ul
Signal Phase : Rxi-1ms
Signal Info : 20M x 0.18mm x 0.18um

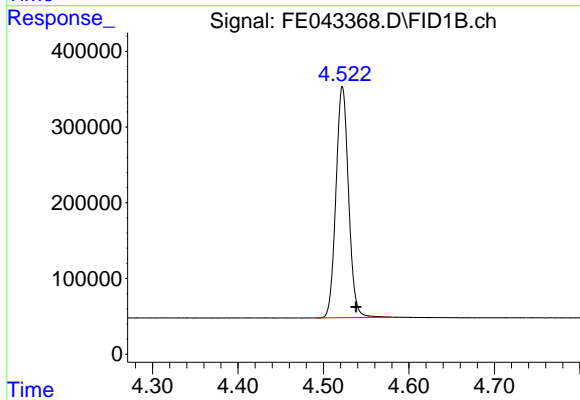




#1 n-Nonane (C9)

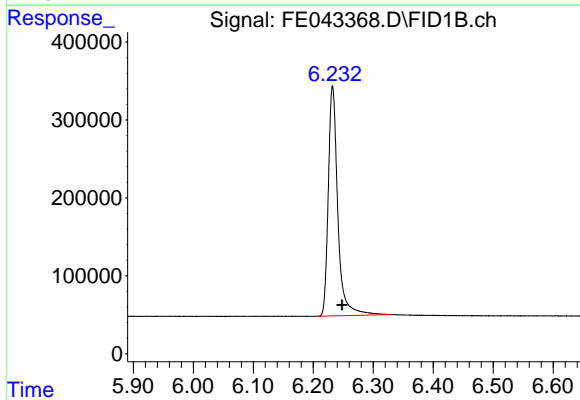
R.T.: 3.270 min
 Delta R.T.: -0.014 min
 Response: 3040224
 Conc: 19.91 ug/ml

Instrument : FID_E
 ClientSampleId : 20 PPM ALIPHATIC HC STD



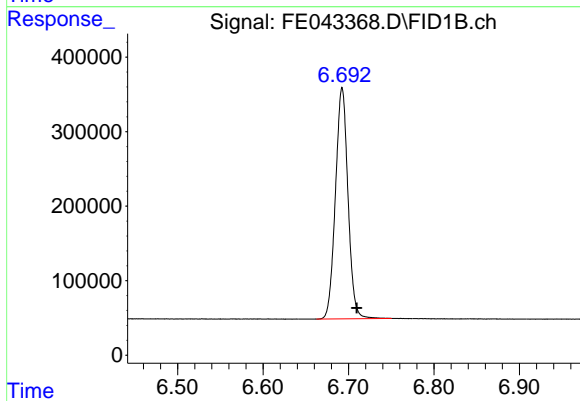
#2 n-Decane (C10)

R.T.: 4.522 min
 Delta R.T.: -0.016 min
 Response: 3133440
 Conc: 20.10 ug/ml



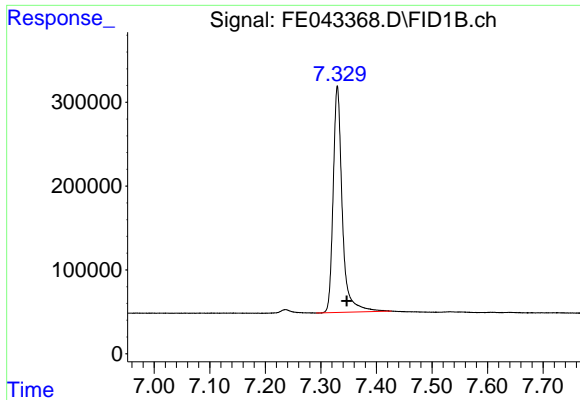
#3 A~Naphthalene (C11.7)

R.T.: 6.232 min
 Delta R.T.: -0.016 min
 Response: 3259427
 Conc: 20.26 ug/ml



#4 n-Dodecane (C12)

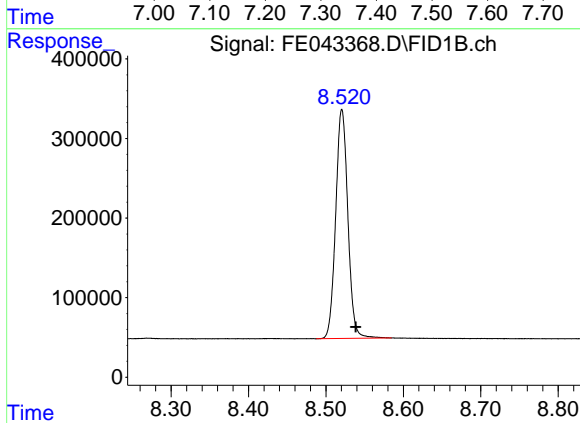
R.T.: 6.693 min
 Delta R.T.: -0.017 min
 Response: 3164551
 Conc: 20.08 ug/ml



#5 A~2-methylnaphthalene (C12.89)

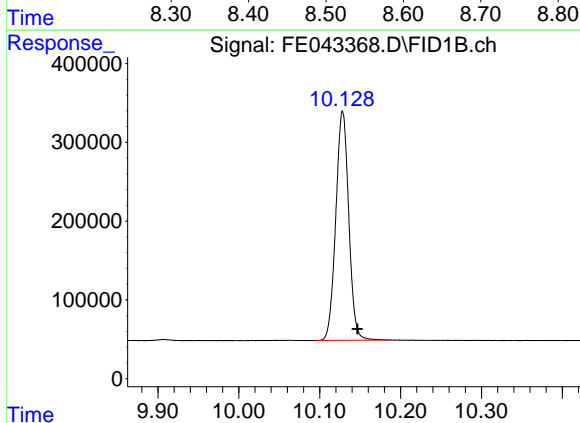
R.T.: 7.330 min
 Delta R.T.: -0.017 min
 Response: 3083733
 Conc: 20.32 ug/ml

Instrument : FID_E
 ClientSampleId : 20 PPM ALIPHATIC HC STD



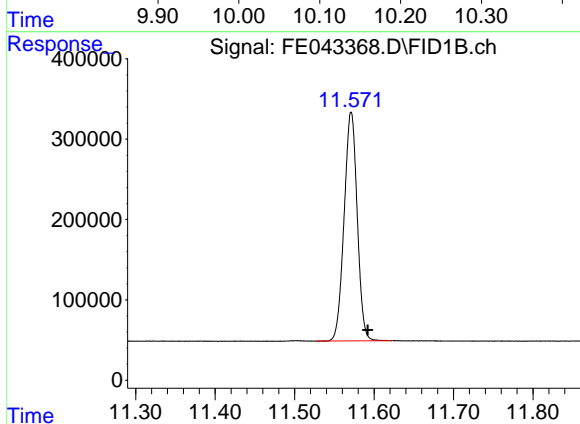
#6 n-Tetradecane (C14)

R.T.: 8.521 min
 Delta R.T.: -0.018 min
 Response: 3146914
 Conc: 19.90 ug/ml



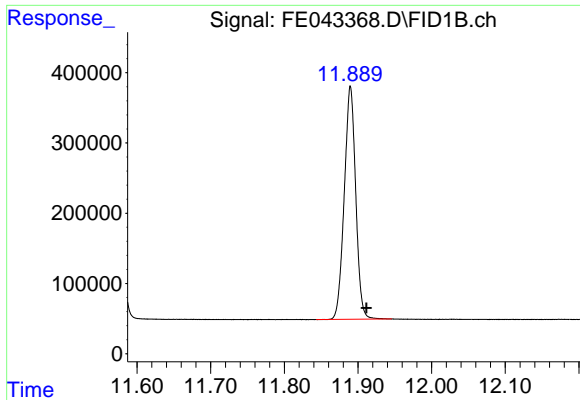
#7 n-Hexadecane (C16)

R.T.: 10.128 min
 Delta R.T.: -0.018 min
 Response: 3242172
 Conc: 20.03 ug/ml



#8 n-Octadecane (C18)

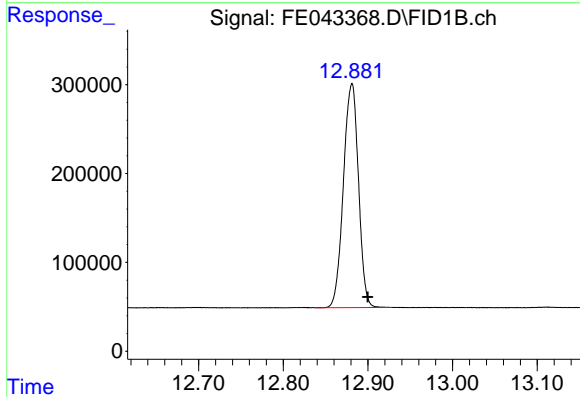
R.T.: 11.571 min
 Delta R.T.: -0.021 min
 Response: 3259413
 Conc: 19.99 ug/ml



#9 ortho-Terphenyl (SURR)

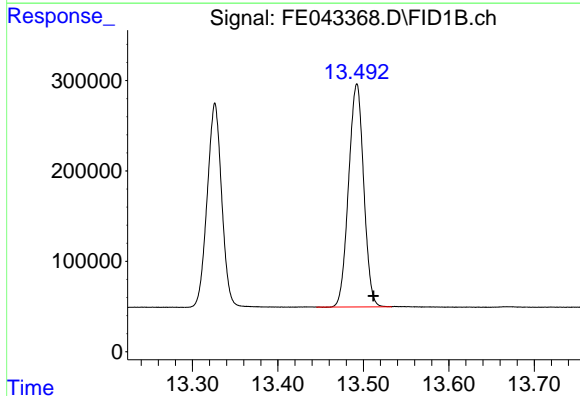
R.T.: 11.890 min
 Delta R.T.: -0.022 min
 Response: 3582538
 Conc: 20.01 ug/ml

Instrument :
 FID_E
 ClientSampleId :
 20 PPM ALIPHATIC HC STD



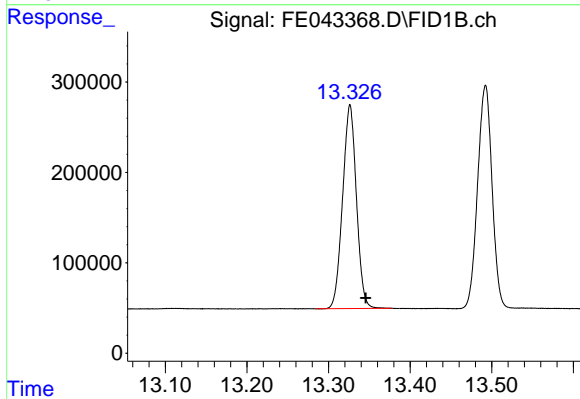
#10 n-Eicosane (C20)

R.T.: 12.881 min
 Delta R.T.: -0.018 min
 Response: 3112690
 Conc: 20.03 ug/ml



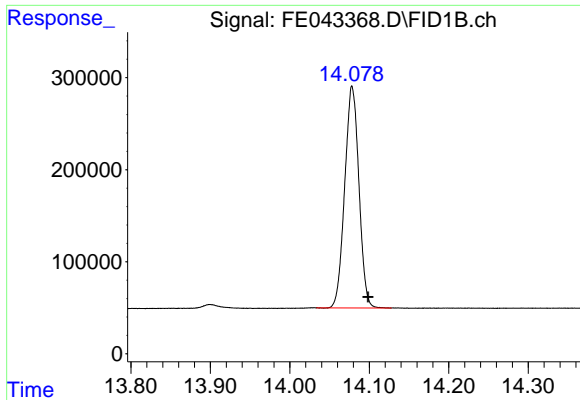
#11 n-Heneicosane (C21)

R.T.: 13.492 min
 Delta R.T.: -0.020 min
 Response: 3028493
 Conc: 19.99 ug/ml



#12 1-chlorooctadecane (SURR)

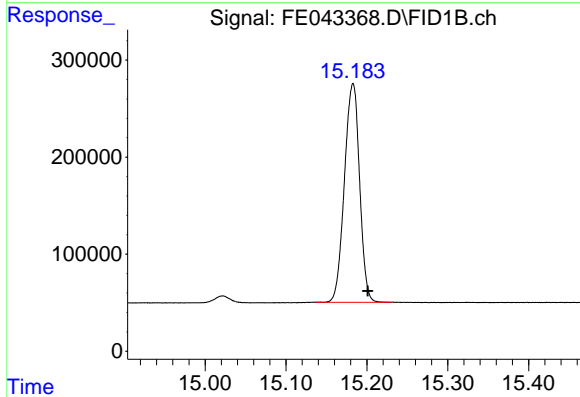
R.T.: 13.326 min
 Delta R.T.: -0.020 min
 Response: 2650691
 Conc: 20.17 ug/ml



#13 n-Docosane (C22)

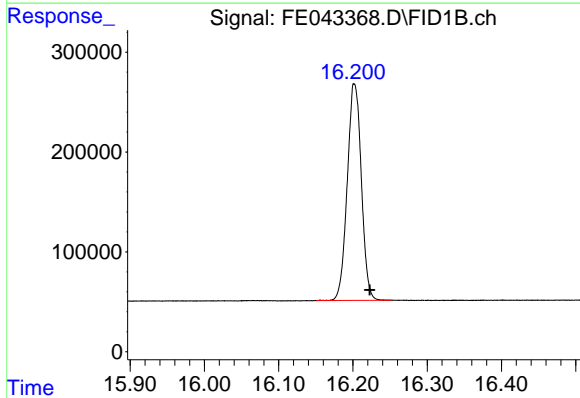
R.T.: 14.078 min
 Delta R.T.: -0.020 min
 Response: 2991215
 Conc: 20.01 ug/ml

Instrument :
 FID_E
 ClientSampleId :
 20 PPM ALIPHATIC HC STD



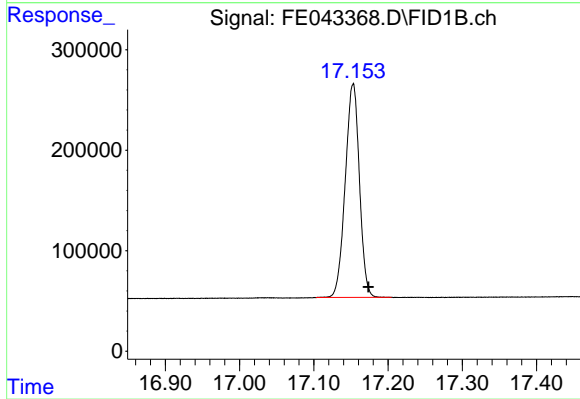
#14 n-Tetracosane (C24)

R.T.: 15.183 min
 Delta R.T.: -0.018 min
 Response: 2935518
 Conc: 19.99 ug/ml



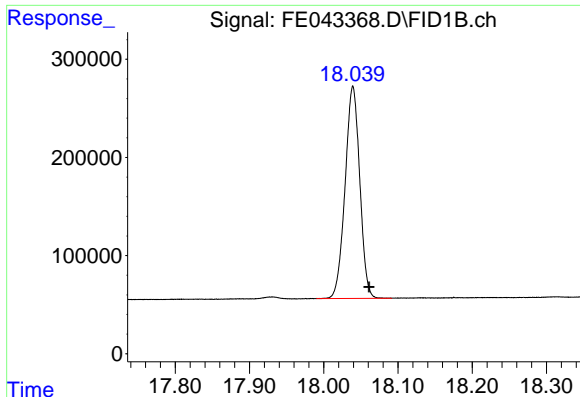
#15 n-Hexacosane (C26)

R.T.: 16.202 min
 Delta R.T.: -0.021 min
 Response: 2860996
 Conc: 20.09 ug/ml



#16 n-Octacosane (C28)

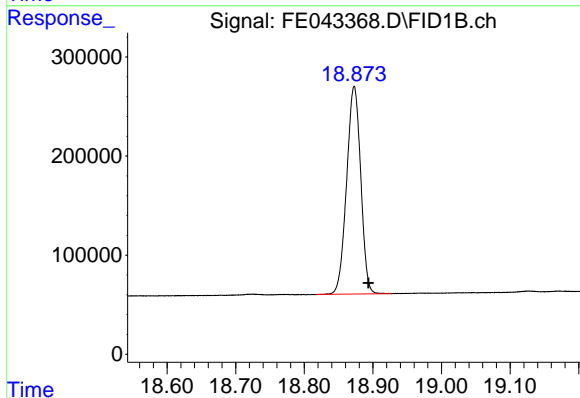
R.T.: 17.153 min
 Delta R.T.: -0.021 min
 Response: 2819088
 Conc: 20.04 ug/ml



#17 n-Tricontane (C30)

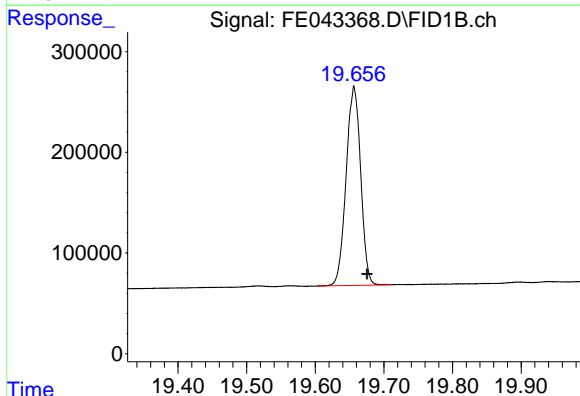
R.T.: 18.039 min
Delta R.T.: -0.022 min
Response: 2964642
Conc: 20.12 ug/ml

Instrument :
FID_E
ClientSampleId :
20 PPM ALIPHATIC HC STD



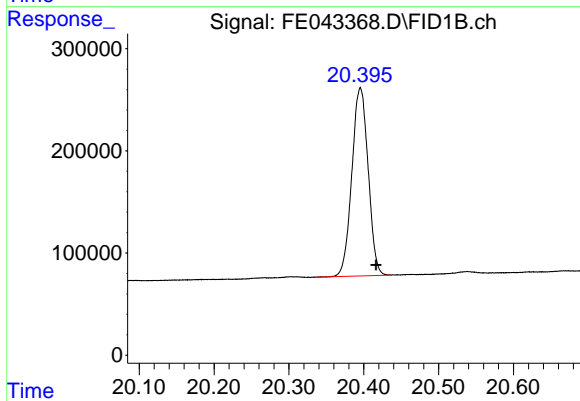
#18 n-Dotriacontane (C32)

R.T.: 18.873 min
Delta R.T.: -0.021 min
Response: 2995289
Conc: 20.21 ug/ml



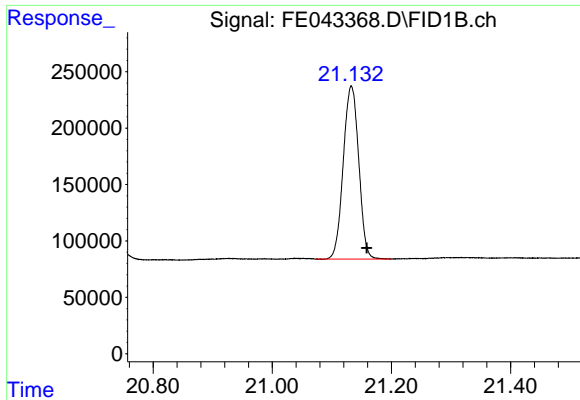
#19 n-Tetratriacontane (C34)

R.T.: 19.657 min
Delta R.T.: -0.019 min
Response: 2907831
Conc: 20.15 ug/ml



#20 n-Hexatriacontane (C36)

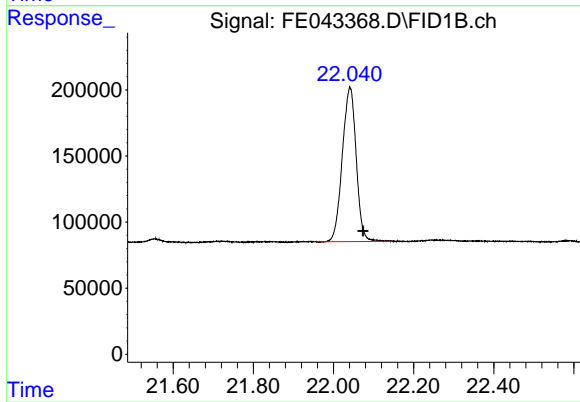
R.T.: 20.396 min
Delta R.T.: -0.021 min
Response: 2781329
Conc: 18.92 ug/ml



#21 n-Octatriacontane (C38)

R.T.: 21.133 min
Delta R.T.: -0.026 min
Response: 2761646
Conc: 19.36 ug/ml

Instrument :
FID_E
ClientSampleId :
20 PPM ALIPHATIC HC STD



#22 n-Tetracontane (C40)

R.T.: 22.041 min
Delta R.T.: -0.033 min
Response: 2802557
Conc: 18.99 ug/ml