

Data Path : Z:\pestpcbsrv\HPCHEM1\FID_E\Data\FE072123AL\
 Data File : FE043396.D
 Signal(s) : FID1B.ch
 Acq On : 21 Jul 2023 15:11
 Operator : YP\AJ
 Sample : 03652-06
 Misc :
 ALS Vial : 13 Sample Multiplier: 1

Instrument :
 FID_E
 ClientSampleId :

Integration File: autoint1.e
 Quant Time: Jul 21 22:17:48 2023
 Quant Method : Z:\pestpcbsrv\HPCHEM1\FID_E\methods\Aliphatic EPH 071323.M
 Quant Title : GC Extractables
 QLast Update : Thu Jul 13 03:02:53 2023
 Response via : Initial Calibration
 Integrator: ChemStation

Volume Inj. : 1 ul
 Signal Phase : Rxi-1ms
 Signal Info : 20M x 0.18mm x 0.18um

Compound	R.T.	Response	Conc Units

System Monitoring Compounds			
9) S ortho-Terphenyl (SURR)	11.889	6476528	36.168 ug/ml
Spiked Amount	50.000	Recovery	= 72.34%
12) S 1-chlorooctadecane (S...	13.326	4755708	36.194 ug/ml
Spiked Amount	50.000	Recovery	= 72.39%
Target Compounds			
10) T n-Eicosane (C20)	12.951f	217753	1.402 ug/ml

(f)=RT Delta > 1/2 Window

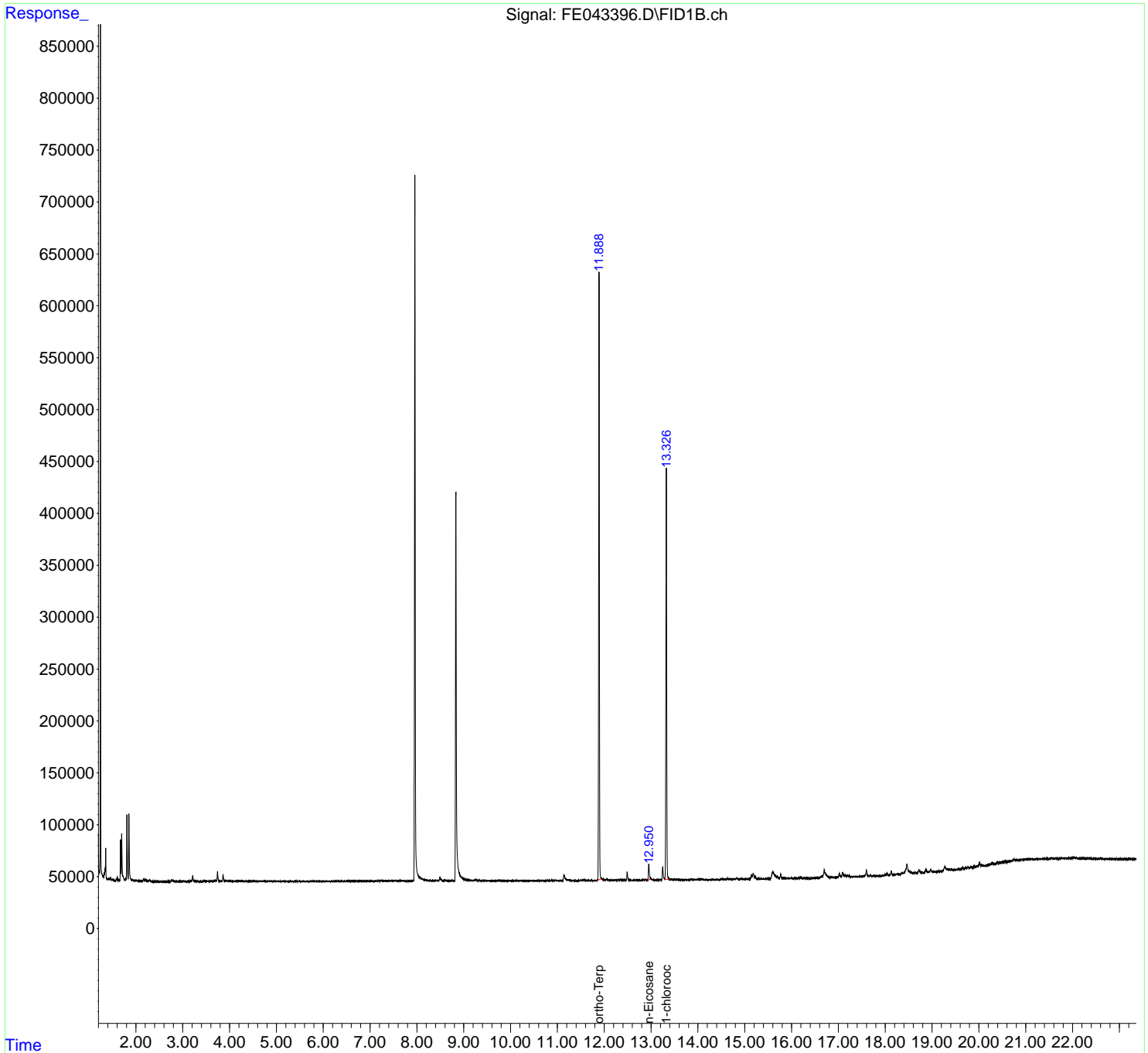
(m)=manual int.

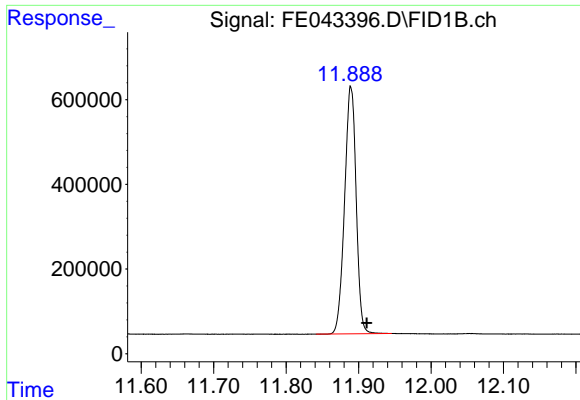
Data Path : Z:\pestpcbsrv\HPCHEM1\FID_E\Data\FE072123AL\
Data File : FE043396.D
Signal(s) : FID1B.ch
Acq On : 21 Jul 2023 15:11
Operator : YP\AJ
Sample : 03652-06
Misc :
ALS Vial : 13 Sample Multiplier: 1

Instrument :
FID_E
ClientSampleId :

Integration File: autoint1.e
Quant Time: Jul 21 22:17:48 2023
Quant Method : Z:\pestpcbsrv\HPCHEM1\FID_E\methods\Aliphatic EPH 071323.M
Quant Title : GC Extractables
QLast Update : Thu Jul 13 03:02:53 2023
Response via : Initial Calibration
Integrator: ChemStation

Volume Inj. : 1 ul
Signal Phase : Rxi-1ms
Signal Info : 20M x 0.18mm x 0.18um

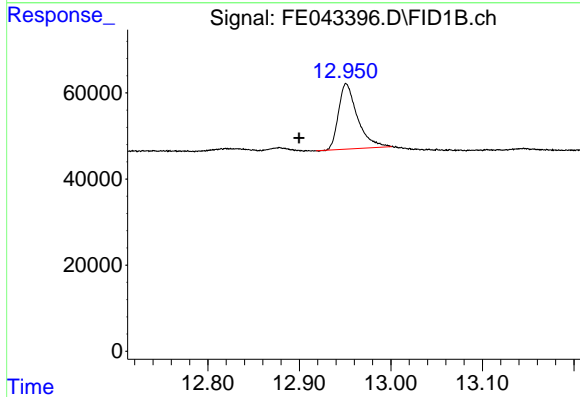




#9 ortho-Terphenyl (SURR)

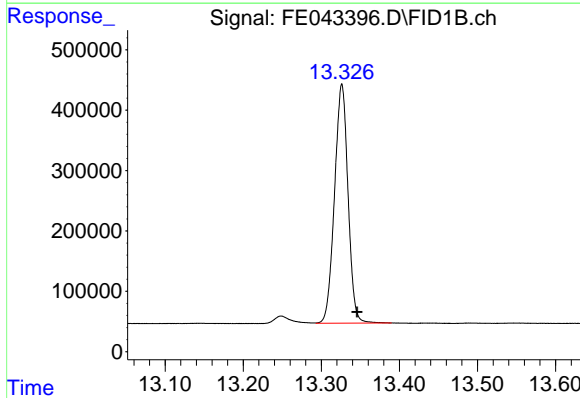
R.T.: 11.889 min
 Delta R.T.: -0.022 min
 Response: 6476528
 Conc: 36.17 ug/ml

Instrument :
 FID_E
 ClientSampleId :



#10 n-Eicosane (C20)

R.T.: 12.951 min
 Delta R.T.: 0.052 min
 Response: 217753
 Conc: 1.40 ug/ml



#12 1-chlorooctadecane (SURR)

R.T.: 13.326 min
 Delta R.T.: -0.020 min
 Response: 4755708
 Conc: 36.19 ug/ml