

Data Path : Z:\pestpcbsrv\HPCHEM1\FID_E\Data\FE072321AL\
 Data File : FE034145.D
 Signal(s) : FID1B.CH
 Acq On : 23 Jul 2021 10:13
 Operator : DD\AJ
 Sample : 20 PPM ALIPHATIC HC STD
 Misc :
 ALS Vial : 2 Sample Multiplier: 1

Integration File: autoint1.e
 Quant Time: Jul 23 23:05:25 2021
 Quant Method : Z:\pestpcbsrv\HPCHEM1\FID_E\methods\Aliphatic EPH 072121.M
 Quant Title : GC Extractables
 QLast Update : Thu Jul 22 02:24:30 2021
 Response via : Initial Calibration
 Integrator: ChemStation 6890 Scale Mode: Large solvent peaks clipped

Volume Inj. : 1 ul
 Signal Phase : Rxi-1ms
 Signal Info : 20M x 0.18mm x 0.18um

Compound	R.T.	Response	Conc Units

System Monitoring Compounds			
9) S ortho-Terphenyl (SURR)	11.589	9943154	21.783 ug/ml
Spiked Amount	50.000	Recovery	= 43.57%
12) S 1-chlorooctadecane (S...	13.022	7569423	21.727 ug/ml
Spiked Amount	50.000	Recovery	= 43.45%
Target Compounds			
1) T n-Nonane (C9)	3.389	8386055	21.776 ug/ml
2) T n-Decane (C10)	4.429	8466723	21.837 ug/ml
3) T A~Naphthalene (C11.7)	6.001	9459271	22.035 ug/ml
4) T n-Dodecane (C12)	6.431	8625199	21.886 ug/ml
5) T A~2-methylnaphthalene...	7.057	9482992	22.223 ug/ml
6) T n-Tetradecane (C14)	8.226	8799837	21.765 ug/ml
7) T n-Hexadecane (C16)	9.827	8919877	21.810 ug/ml
8) T n-Octadecane (C18)	11.270	9266095	21.794 ug/ml
10) T n-Eicosane (C20)	12.579	9228505	21.771 ug/ml
11) T n-Heneicosane (C21)	13.191	9331675	21.780 ug/ml
13) T n-Docosane (C22)	13.777	9249437	21.786 ug/ml
14) T n-Tetracosane (C24)	14.880	9276502	21.851 ug/ml
15) T n-Hexacosane (C26)	15.901	9053604	21.898 ug/ml
16) T n-Octacosane (C28)	16.851	8878426	22.011 ug/ml
17) T n-Tricontane (C30)	17.740	8668990	22.326 ug/ml
18) T n-Dotriacontane (C32)	18.572	8191612	22.493 ug/ml
19) T n-Tetratriacontane (C34)	19.356	7634710	22.295 ug/ml
20) T n-Hexatriacontane (C36)	20.095	6821736	21.969 ug/ml
21) T n-Octatriacontane (C38)	20.831	5796446	20.558 ug/ml
22) T n-Tetracontane (C40)	21.739	4586290	17.772 ug/ml

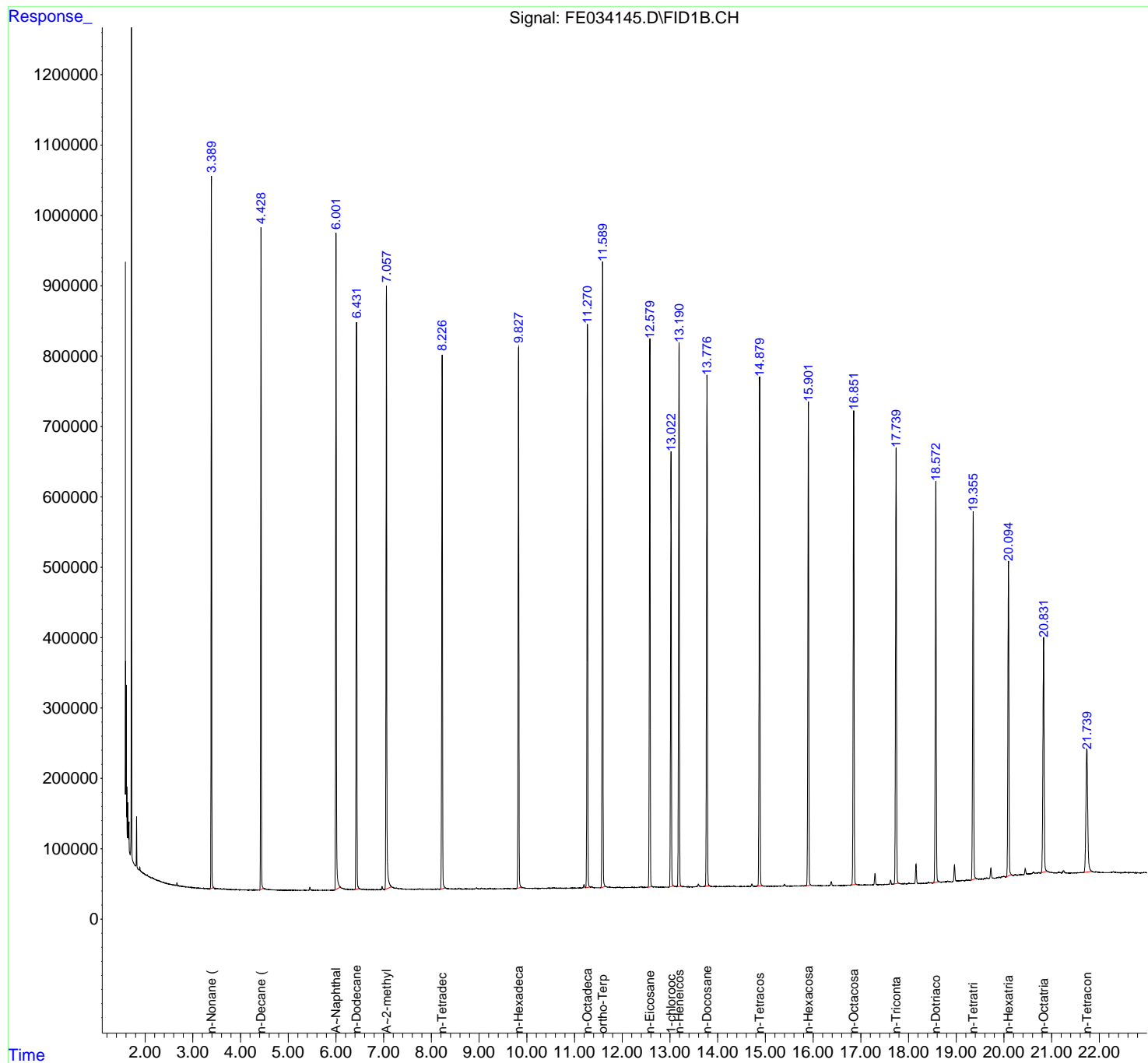
(f)=RT Delta > 1/2 Window

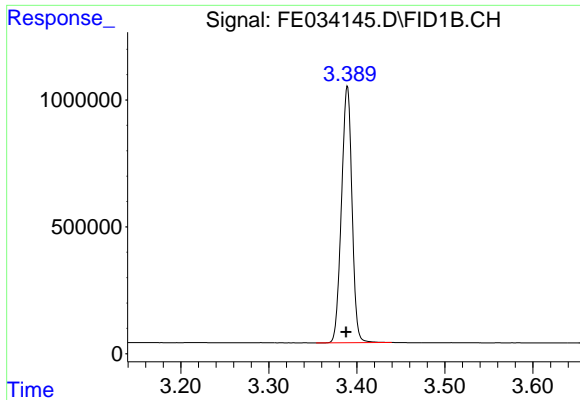
(m)=manual int.

Data Path : Z:\pestpcbsrv\HPCHEM1\FID_E\Data\FE072321AL\
 Data File : FE034145.D
 Signal(s) : FID1B.CH
 Acq On : 23 Jul 2021 10:13
 Operator : DD\AJ
 Sample : 20 PPM ALIPHATIC HC STD
 Misc :
 ALS Vial : 2 Sample Multiplier: 1

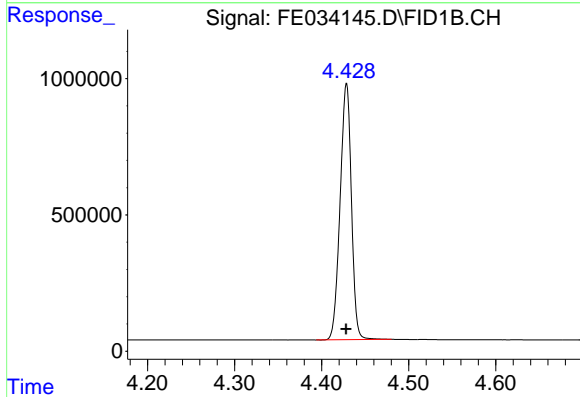
Integration File: autoint1.e
 Quant Time: Jul 23 23:05:25 2021
 Quant Method : Z:\pestpcbsrv\HPCHEM1\FID_E\methods\Aliphatic EPH 072121.M
 Quant Title : GC Extractables
 QLast Update : Thu Jul 22 02:24:30 2021
 Response via : Initial Calibration
 Integrator: ChemStation 6890 Scale Mode: Large solvent peaks clipped

Volume Inj. : 1 ul
 Signal Phase : Rxi-1ms
 Signal Info : 20M x 0.18mm x 0.18um

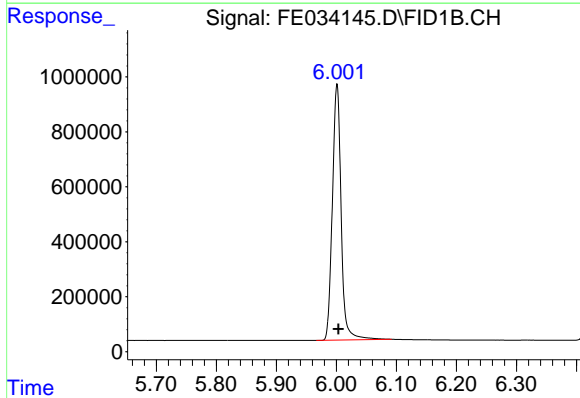




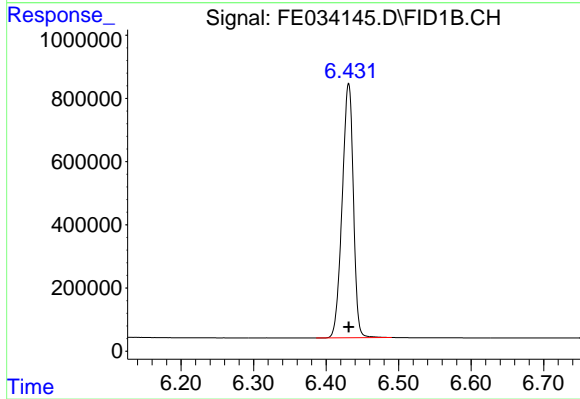
#1 n-Nonane (C9)
R.T.: 3.389 min
Delta R.T.: 0.001 min
Response: 8386055
Conc: 21.78 ug/ml



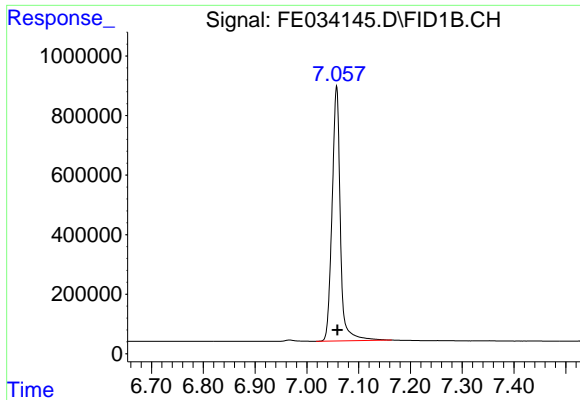
#2 n-Decane (C10)
R.T.: 4.429 min
Delta R.T.: 0.000 min
Response: 8466723
Conc: 21.84 ug/ml



#3 A~Naphthalene (C11.7)
R.T.: 6.001 min
Delta R.T.: -0.002 min
Response: 9459271
Conc: 22.04 ug/ml

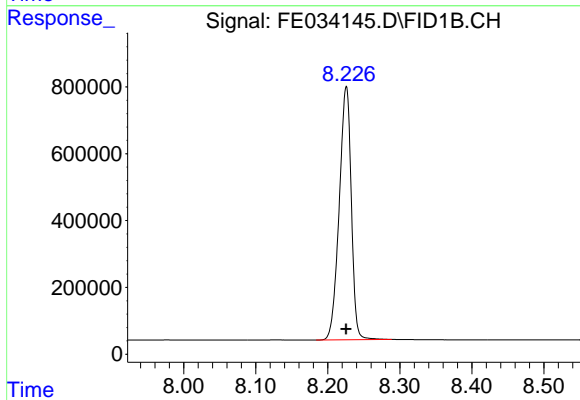


#4 n-Dodecane (C12)
R.T.: 6.431 min
Delta R.T.: 0.000 min
Response: 8625199
Conc: 21.89 ug/ml



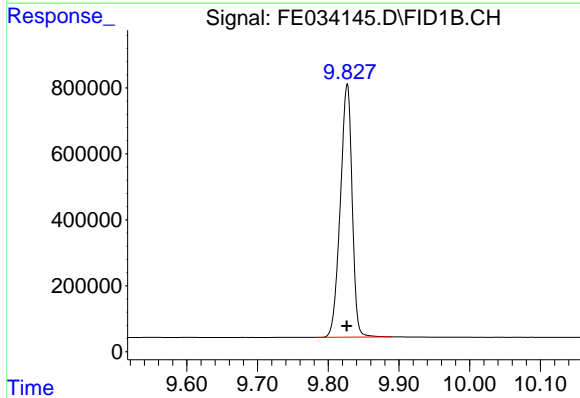
#5 A~2-methylnaphthalene (C12.89)

R.T.: 7.057 min
Delta R.T.: -0.001 min
Response: 9482992
Conc: 22.22 ug/ml



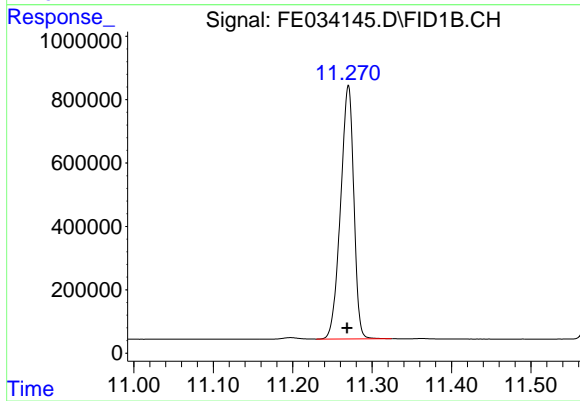
#6 n-Tetradecane (C14)

R.T.: 8.226 min
Delta R.T.: 0.000 min
Response: 8799837
Conc: 21.76 ug/ml



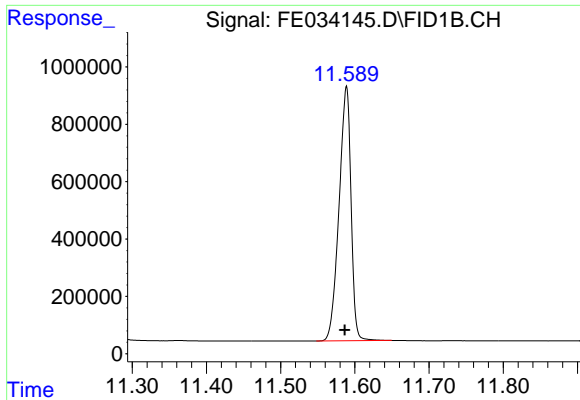
#7 n-Hexadecane (C16)

R.T.: 9.827 min
Delta R.T.: 0.000 min
Response: 8919877
Conc: 21.81 ug/ml



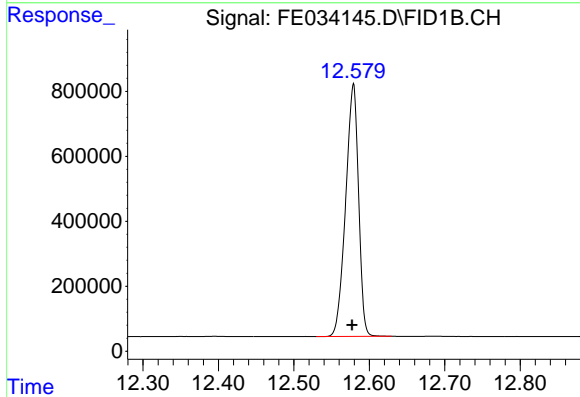
#8 n-Octadecane (C18)

R.T.: 11.270 min
Delta R.T.: 0.002 min
Response: 9266095
Conc: 21.79 ug/ml



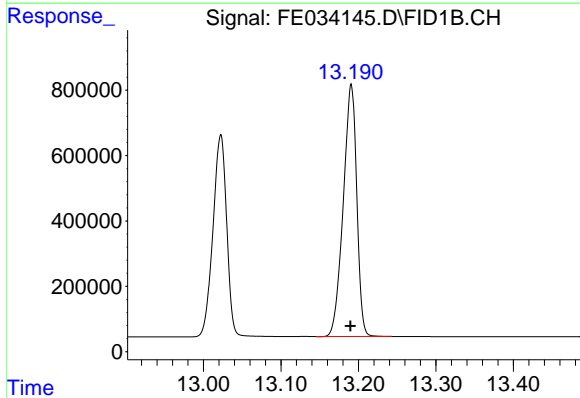
#9 ortho-Terphenyl (SURR)

R.T.: 11.589 min
 Delta R.T.: 0.002 min
 Response: 9943154
 Conc: 21.78 ug/ml



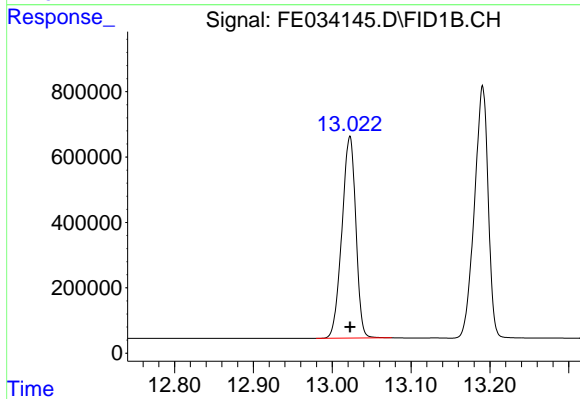
#10 n-Eicosane (C20)

R.T.: 12.579 min
 Delta R.T.: 0.002 min
 Response: 9228505
 Conc: 21.77 ug/ml



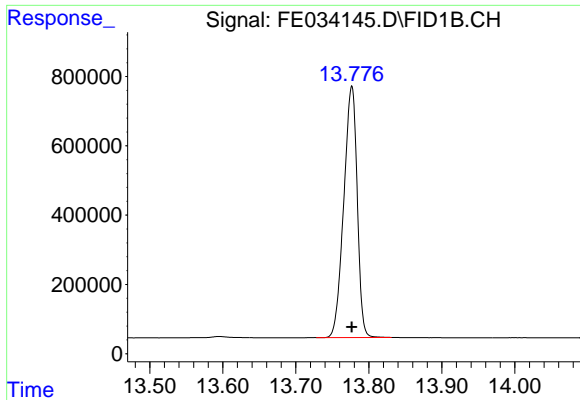
#11 n-Heneicosane (C21)

R.T.: 13.191 min
 Delta R.T.: 0.001 min
 Response: 9331675
 Conc: 21.78 ug/ml



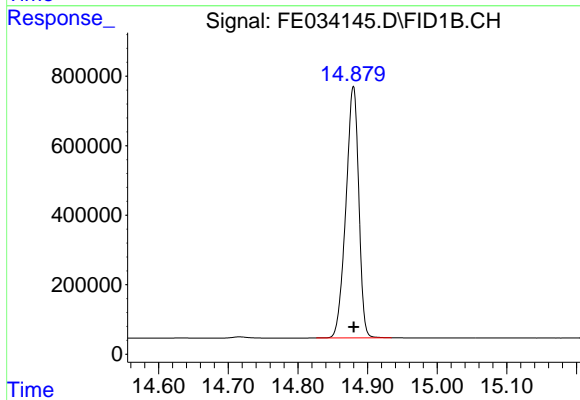
#12 1-chlorooctadecane (SURR)

R.T.: 13.022 min
 Delta R.T.: 0.000 min
 Response: 7569423
 Conc: 21.73 ug/ml



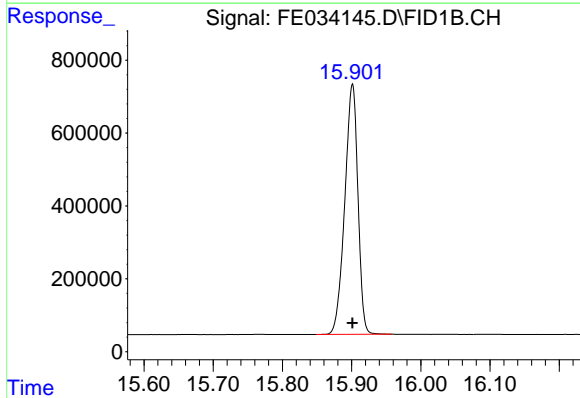
#13 n-Docosane (C22)

R.T.: 13.777 min
Delta R.T.: 0.000 min
Response: 9249437
Conc: 21.79 ug/ml



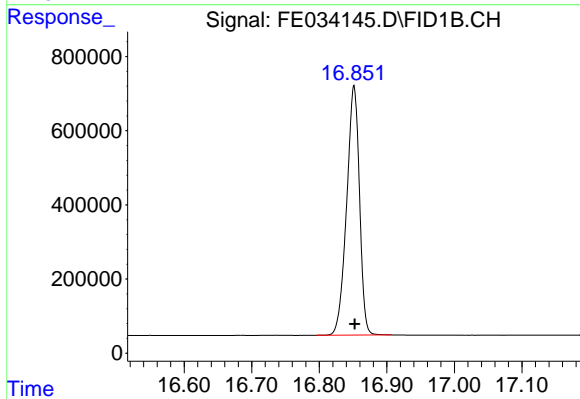
#14 n-Tetracosane (C24)

R.T.: 14.880 min
Delta R.T.: 0.000 min
Response: 9276502
Conc: 21.85 ug/ml



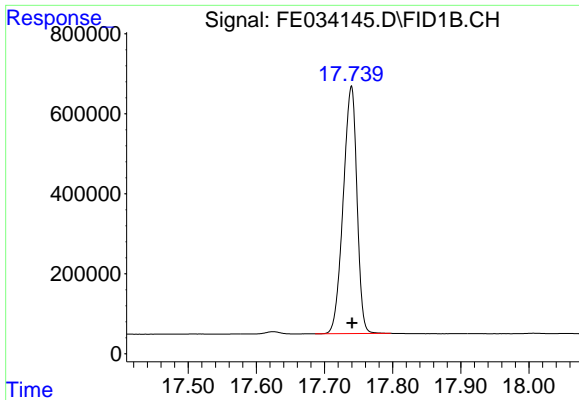
#15 n-Hexacosane (C26)

R.T.: 15.901 min
Delta R.T.: 0.000 min
Response: 9053604
Conc: 21.90 ug/ml



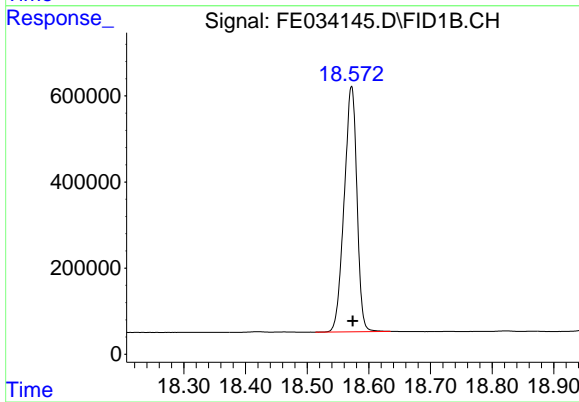
#16 n-Octacosane (C28)

R.T.: 16.851 min
Delta R.T.: -0.001 min
Response: 8878426
Conc: 22.01 ug/ml



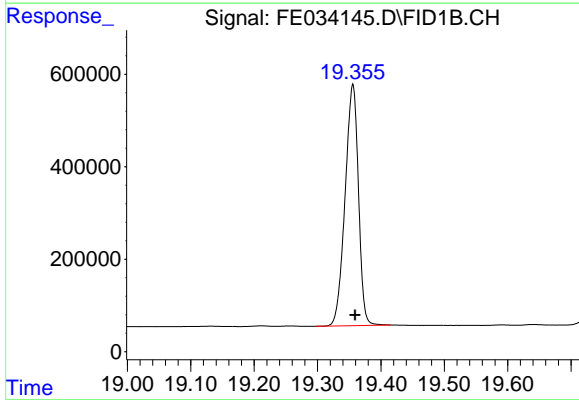
#17 n-Tricontane (C30)

R.T.: 17.740 min
Delta R.T.: 0.000 min
Response: 8668990
Conc: 22.33 ug/ml



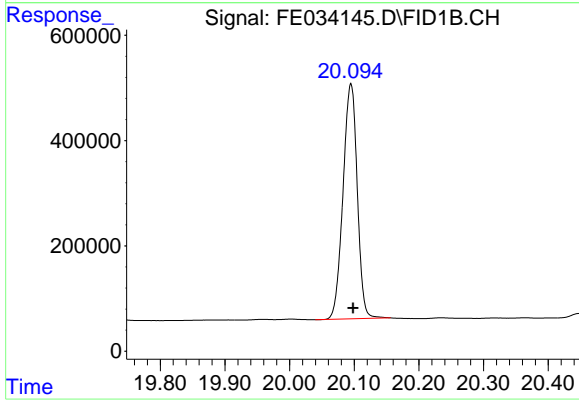
#18 n-Dotriacontane (C32)

R.T.: 18.572 min
Delta R.T.: -0.002 min
Response: 8191612
Conc: 22.49 ug/ml



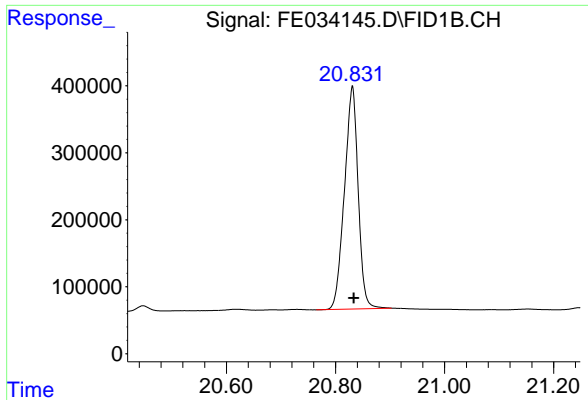
#19 n-Tetratriacontane (C34)

R.T.: 19.356 min
Delta R.T.: -0.003 min
Response: 7634710
Conc: 22.29 ug/ml



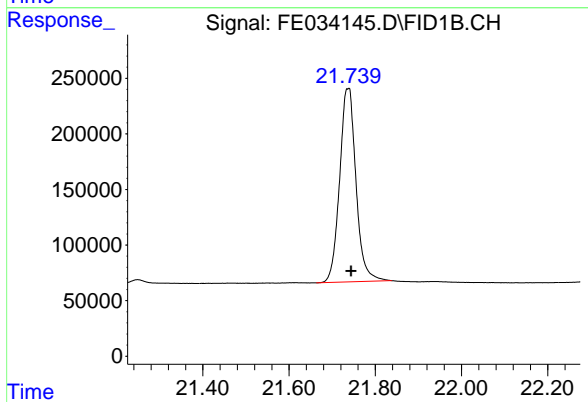
#20 n-Hexatriacontane (C36)

R.T.: 20.095 min
Delta R.T.: -0.003 min
Response: 6821736
Conc: 21.97 ug/ml



#21 n-Octatriacontane (C38)

R.T.: 20.831 min
Delta R.T.: -0.003 min
Response: 5796446
Conc: 20.56 ug/ml



#22 n-Tetracontane (C40)

R.T.: 21.739 min
Delta R.T.: -0.005 min
Response: 4586290
Conc: 17.77 ug/ml