

Data Path : Z:\pestpcbsrv\HPCHEM1\FID_E\Data\FE072623AL\
 Data File : FE043517.D
 Signal(s) : FID1B.ch
 Acq On : 26 Jul 2023 08:58
 Operator : YP\AJ
 Sample : 20 PPM ALIPHATIC HC STD
 Misc :
 ALS Vial : 2 Sample Multiplier: 1

Instrument :
 FID_E
 ClientSampleId :
 20 PPM ALIPHATIC HC STD

Integration File: autoint1.e
 Quant Time: Jul 27 01:21:02 2023
 Quant Method : Z:\pestpcbsrv\HPCHEM1\FID_E\methods\Aliphatic EPH 071323.M
 Quant Title : GC Extractables
 QLast Update : Thu Jul 13 03:02:53 2023
 Response via : Initial Calibration
 Integrator: ChemStation

Volume Inj. : 1 ul
 Signal Phase : Rxi-1ms
 Signal Info : 20M x 0.18mm x 0.18um

Compound	R.T.	Response	Conc Units

System Monitoring Compounds			
9) S ortho-Terphenyl (SURR)	11.883	3667918	20.484 ug/ml
Spiked Amount	50.000	Recovery	= 40.97%
12) S 1-chlorooctadecane (S...	13.319	2689835	20.471 ug/ml
Spiked Amount	50.000	Recovery	= 40.94%
Target Compounds			
1) T n-Nonane (C9)	3.264	3049362	19.972 ug/ml
2) T n-Decane (C10)	4.516	3158571	20.261 ug/ml
3) T A~Naphthalene (C11.7)	6.226	3249790	20.196 ug/ml
4) T n-Dodecane (C12)	6.686	3186400	20.222 ug/ml
5) T A~2-methylnaphthalene...	7.323	3081156	20.305 ug/ml
6) T n-Tetradecane (C14)	8.515	3173612	20.065 ug/ml
7) T n-Hexadecane (C16)	10.122	3283397	20.289 ug/ml
8) T n-Octadecane (C18)	11.564	3330998	20.433 ug/ml
10) T n-Eicosane (C20)	12.873	3181908	20.480 ug/ml
11) T n-Heneicosane (C21)	13.485	3104928	20.494 ug/ml
13) T n-Docosane (C22)	14.072	3066810	20.521 ug/ml
14) T n-Tetracosane (C24)	15.175	3016251	20.538 ug/ml
15) T n-Hexacosane (C26)	16.195	2943778	20.668 ug/ml
16) T n-Octacosane (C28)	17.144	2915250	20.719 ug/ml
17) T n-Tricontane (C30)	18.032	3096073	21.017 ug/ml
18) T n-Dotriacontane (C32)	18.864	3135160	21.158 ug/ml
19) T n-Tetratriacontane (C34)	19.648	3017416	20.908 ug/ml
20) T n-Hexatriacontane (C36)	20.387	2881700	19.606 ug/ml
21) T n-Octatriacontane (C38)	21.124	2789881	19.557 ug/ml
22) T n-Tetracontane (C40)	22.027	2810537	19.044 ug/ml

(f)=RT Delta > 1/2 Window

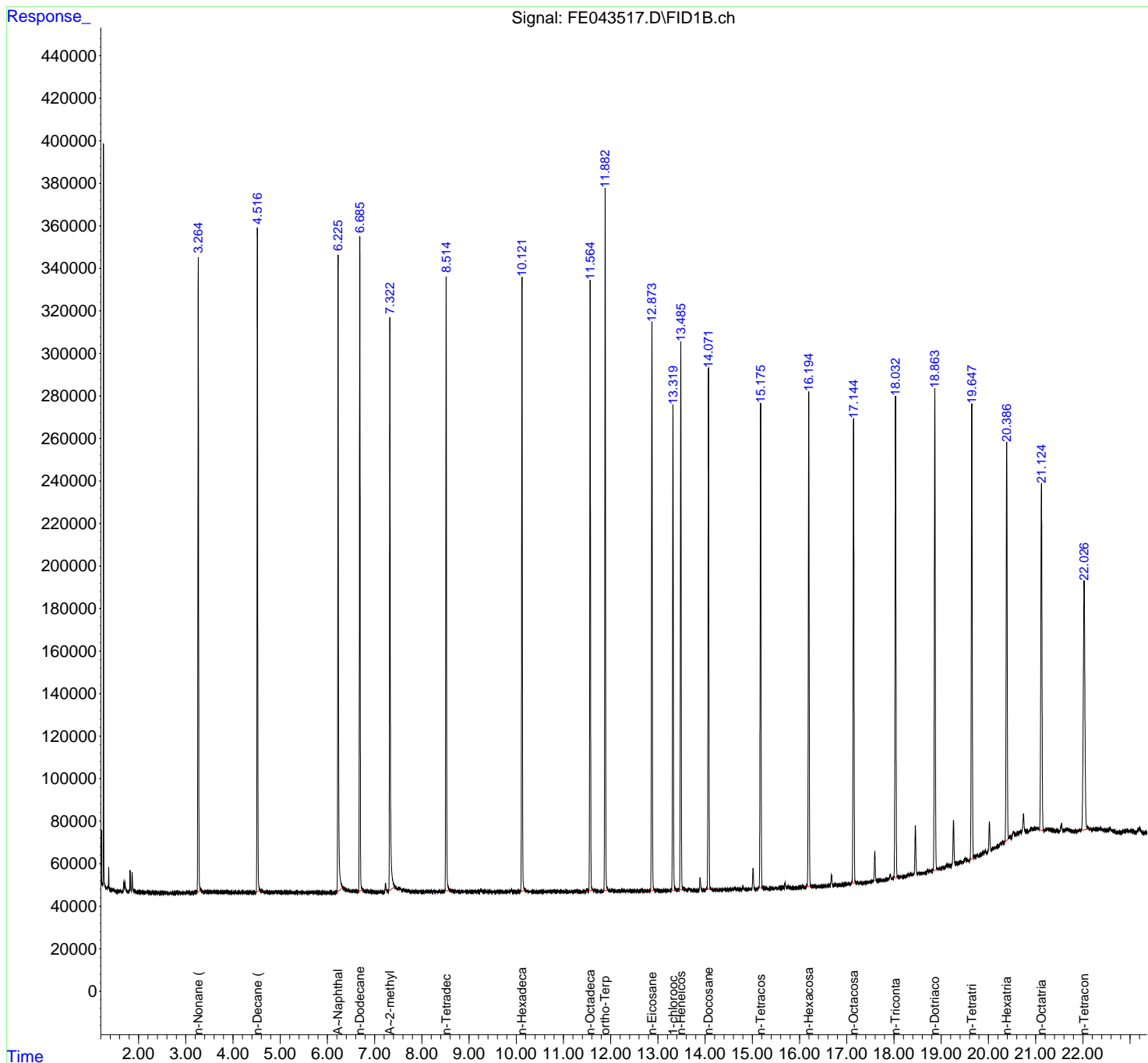
(m)=manual int.

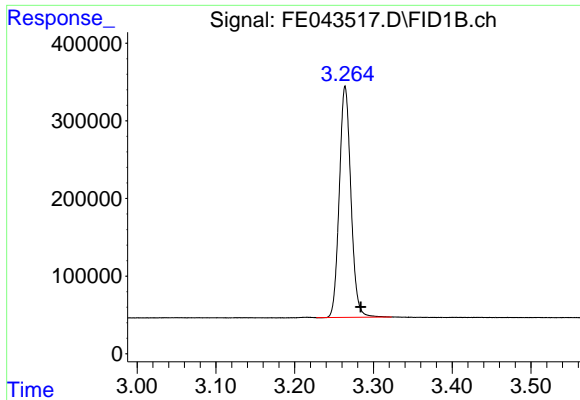
Data Path : Z:\pestpcbsrv\HPCHEM1\FID_E\Data\FE072623AL\
 Data File : FE043517.D
 Signal(s) : FID1B.ch
 Acq On : 26 Jul 2023 08:58
 Operator : YP\AJ
 Sample : 20 PPM ALIPHATIC HC STD
 Misc :
 ALS Vial : 2 Sample Multiplier: 1

Instrument :
 FID_E
 ClientSampleId :
 20 PPM ALIPHATIC HC STD

Integration File: autoint1.e
 Quant Time: Jul 27 01:21:02 2023
 Quant Method : Z:\pestpcbsrv\HPCHEM1\FID_E\methods\Aliphatic EPH 071323.M
 Quant Title : GC Extractables
 QLast Update : Thu Jul 13 03:02:53 2023
 Response via : Initial Calibration
 Integrator: ChemStation

Volume Inj. : 1 ul
 Signal Phase : Rxi-1ms
 Signal Info : 20M x 0.18mm x 0.18um

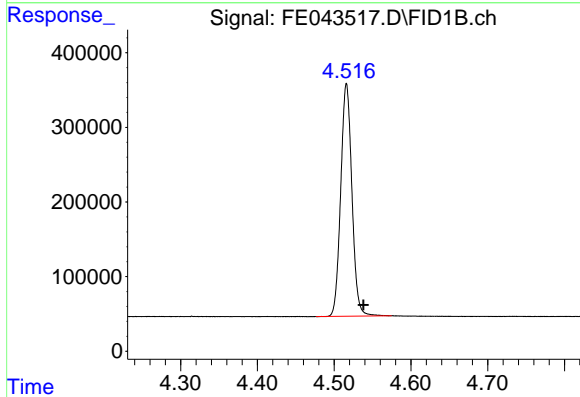




#1 n-Nonane (C9)

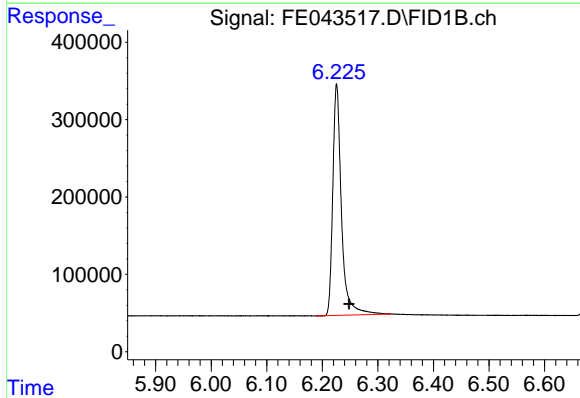
R.T.: 3.264 min
Delta R.T.: -0.020 min
Response: 3049362
Conc: 19.97 ug/ml

Instrument : FID_E
ClientSampleId : 20 PPM ALIPHATIC HC STD



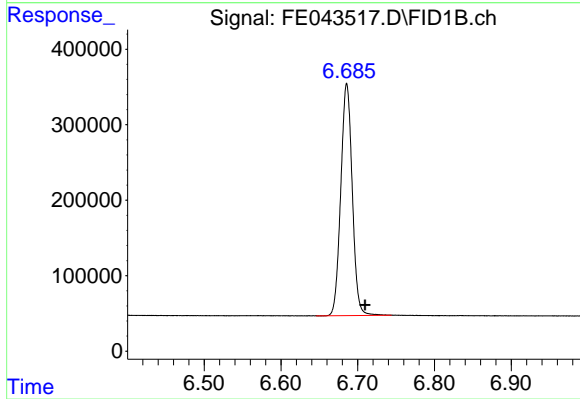
#2 n-Decane (C10)

R.T.: 4.516 min
Delta R.T.: -0.022 min
Response: 3158571
Conc: 20.26 ug/ml



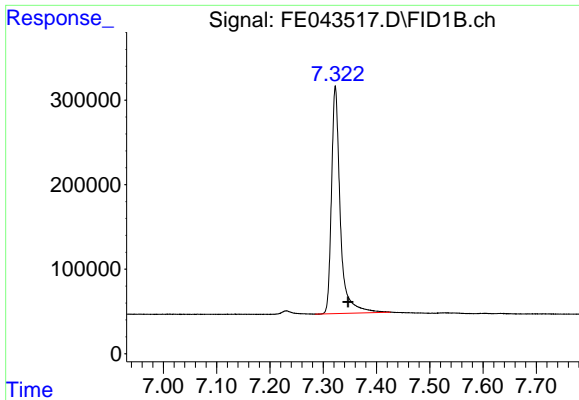
#3 A~Naphthalene (C11.7)

R.T.: 6.226 min
Delta R.T.: -0.022 min
Response: 3249790
Conc: 20.20 ug/ml



#4 n-Dodecane (C12)

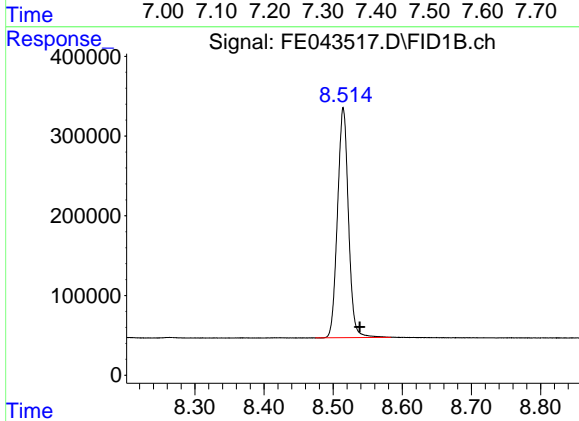
R.T.: 6.686 min
Delta R.T.: -0.024 min
Response: 3186400
Conc: 20.22 ug/ml



#5 A~2-methylnaphthalene (C12.89)

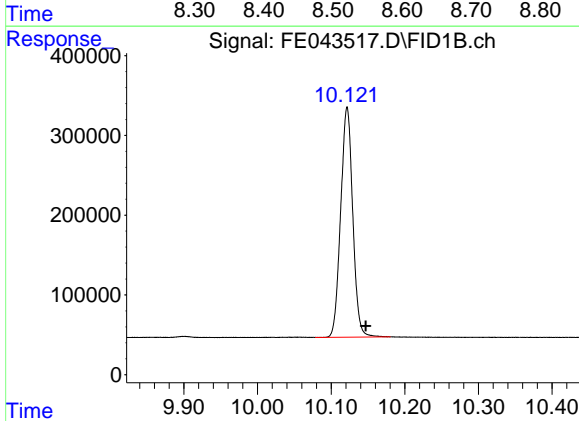
R.T.: 7.323 min
 Delta R.T.: -0.024 min
 Response: 3081156
 Conc: 20.31 ug/ml

Instrument : FID_E
 ClientSampleId : 20 PPM ALIPHATIC HC STD



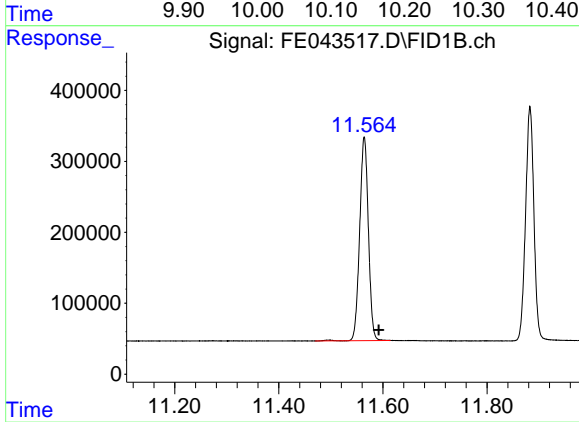
#6 n-Tetradecane (C14)

R.T.: 8.515 min
 Delta R.T.: -0.024 min
 Response: 3173612
 Conc: 20.06 ug/ml



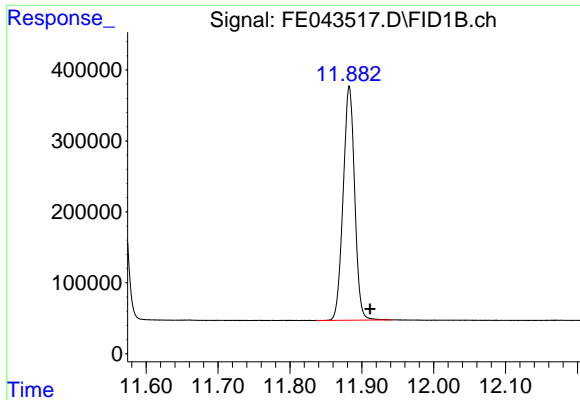
#7 n-Hexadecane (C16)

R.T.: 10.122 min
 Delta R.T.: -0.025 min
 Response: 3283397
 Conc: 20.29 ug/ml



#8 n-Octadecane (C18)

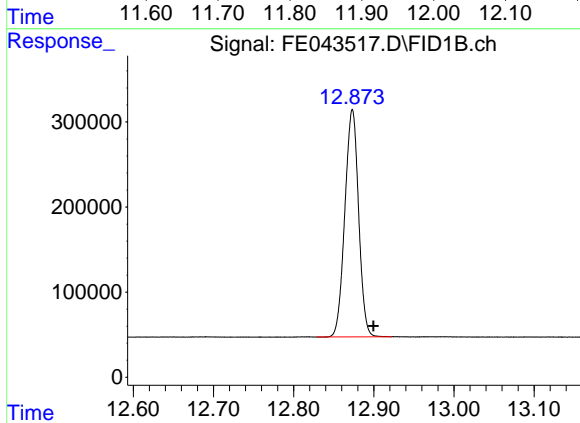
R.T.: 11.564 min
 Delta R.T.: -0.028 min
 Response: 3330998
 Conc: 20.43 ug/ml



#9 ortho-Terphenyl (SURR)

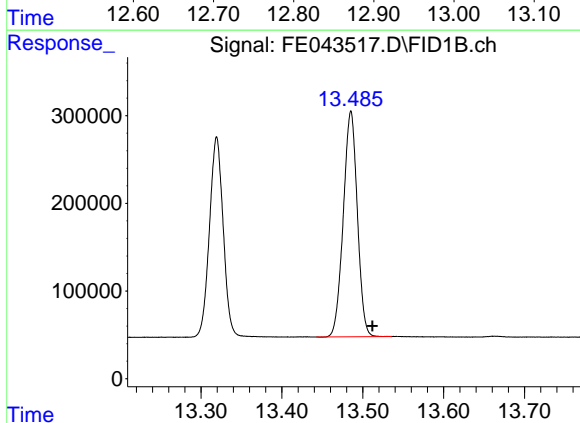
R.T.: 11.883 min
 Delta R.T.: -0.029 min
 Response: 3667918
 Conc: 20.48 ug/ml

Instrument : FID_E
 ClientSampleId : 20 PPM ALIPHATIC HC STD



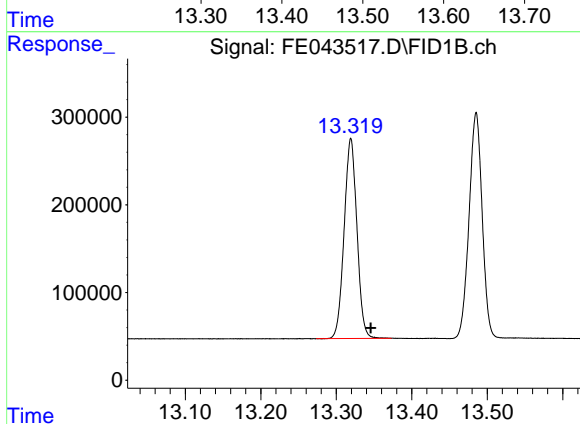
#10 n-Eicosane (C20)

R.T.: 12.873 min
 Delta R.T.: -0.026 min
 Response: 3181908
 Conc: 20.48 ug/ml



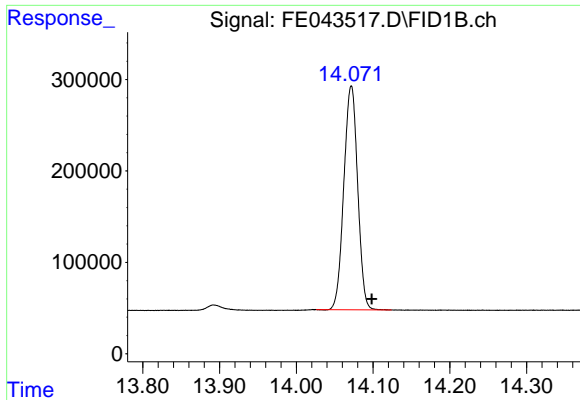
#11 n-Heneicosane (C21)

R.T.: 13.485 min
 Delta R.T.: -0.027 min
 Response: 3104928
 Conc: 20.49 ug/ml



#12 1-chlorooctadecane (SURR)

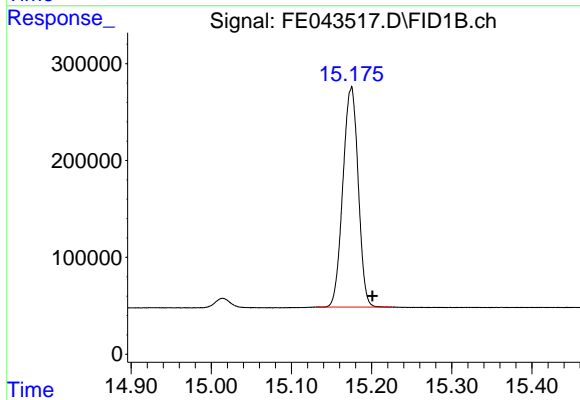
R.T.: 13.319 min
 Delta R.T.: -0.027 min
 Response: 2689835
 Conc: 20.47 ug/ml



#13 n-Docosane (C22)

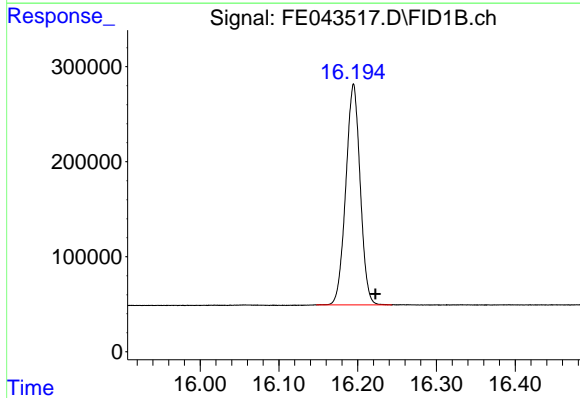
R.T.: 14.072 min
 Delta R.T.: -0.027 min
 Response: 3066810
 Conc: 20.52 ug/ml

Instrument :
 FID_E
 ClientSampleId :
 20 PPM ALIPHATIC HC STD



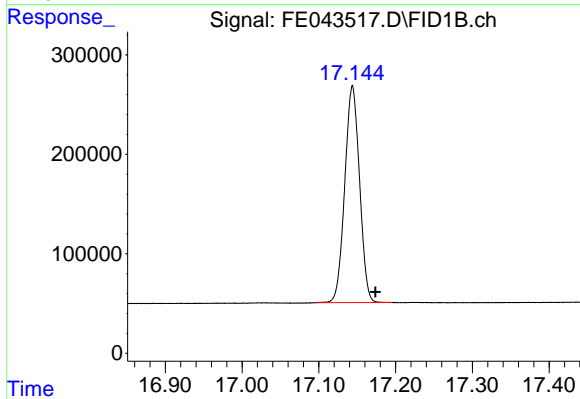
#14 n-Tetracosane (C24)

R.T.: 15.175 min
 Delta R.T.: -0.026 min
 Response: 3016251
 Conc: 20.54 ug/ml



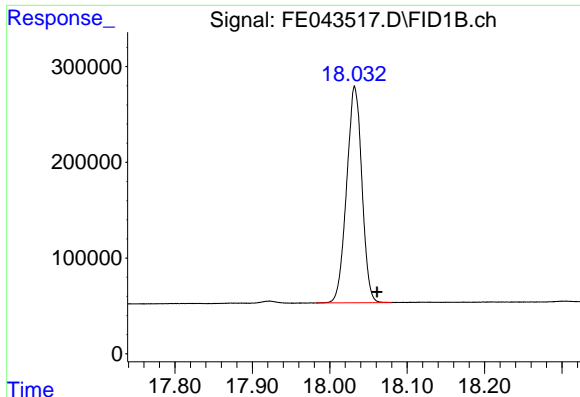
#15 n-Hexacosane (C26)

R.T.: 16.195 min
 Delta R.T.: -0.028 min
 Response: 2943778
 Conc: 20.67 ug/ml



#16 n-Octacosane (C28)

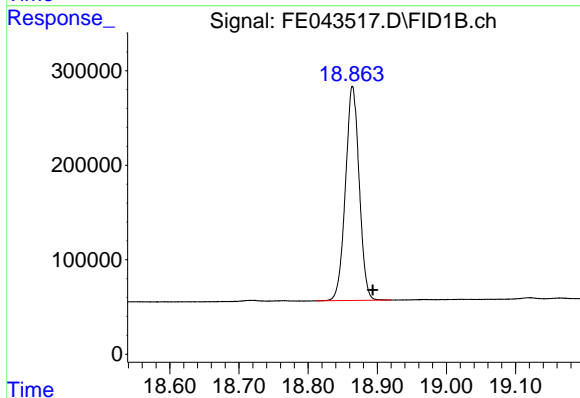
R.T.: 17.144 min
 Delta R.T.: -0.030 min
 Response: 2915250
 Conc: 20.72 ug/ml



#17 n-Tricontane (C30)

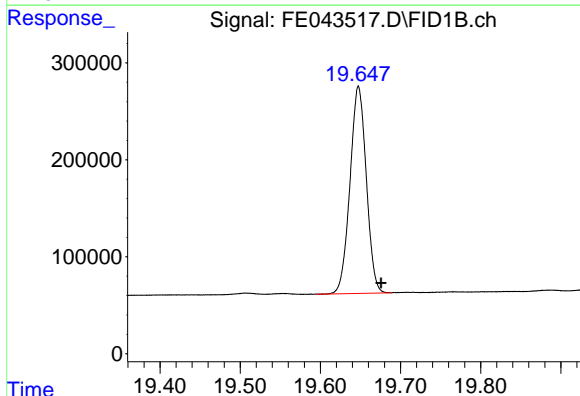
R.T.: 18.032 min
Delta R.T.: -0.029 min
Response: 3096073
Conc: 21.02 ug/ml

Instrument :
FID_E
ClientSampleId :
20 PPM ALIPHATIC HC STD



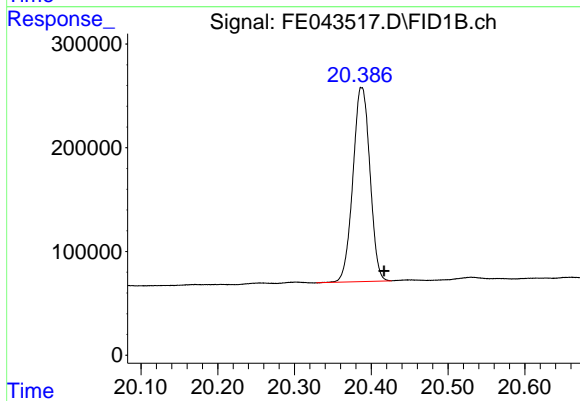
#18 n-Dotriacontane (C32)

R.T.: 18.864 min
Delta R.T.: -0.029 min
Response: 3135160
Conc: 21.16 ug/ml



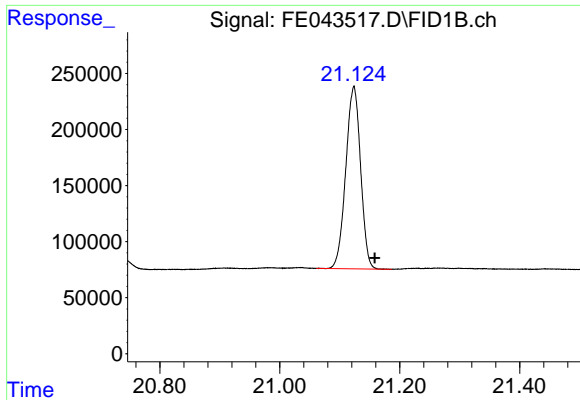
#19 n-Tetratriacontane (C34)

R.T.: 19.648 min
Delta R.T.: -0.028 min
Response: 3017416
Conc: 20.91 ug/ml



#20 n-Hexatriacontane (C36)

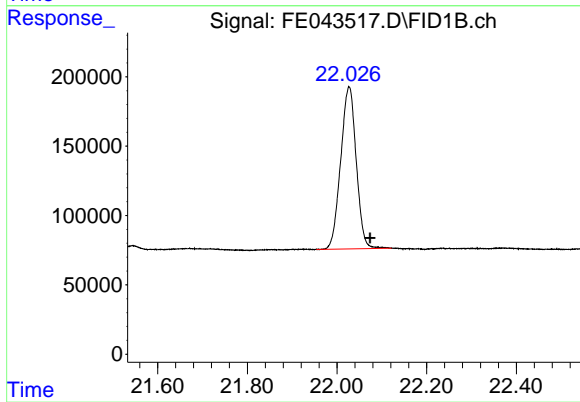
R.T.: 20.387 min
Delta R.T.: -0.029 min
Response: 2881700
Conc: 19.61 ug/ml



#21 n-Octatriacontane (C38)

R.T.: 21.124 min
Delta R.T.: -0.035 min
Response: 2789881
Conc: 19.56 ug/ml

Instrument :
FID_E
ClientSampleId :
20 PPM ALIPHATIC HC STD



#22 n-Tetracontane (C40)

R.T.: 22.027 min
Delta R.T.: -0.047 min
Response: 2810537
Conc: 19.04 ug/ml