

Data Path : Z:\pestpcbsrv\HPCHEM1\FID_E\Data\FE072823AL\
 Data File : FE043594.D
 Signal(s) : FID1B.ch
 Acq On : 28 Jul 2023 13:03
 Operator : YP\AJ
 Sample : 03791-01DL 5X
 Misc :
 ALS Vial : 17 Sample Multiplier: 1

Instrument :
 FID_E
ClientSampleId :
 EO-03-072623DL

Manual Integrations
APPROVED
 Reviewed By :Yogesh Patel 07/31/2023
 Supervised By :Ankita Jodhani 07/31/2023

Integration File: sample.E
 Quant Time: Jul 28 13:29:00 2023
 Quant Method : Z:\pestpcbsrv\HPCHEM1\FID_E\methods\Aliphatic EPH 071323.M
 Quant Title : GC Extractables
 QLast Update : Thu Jul 13 03:02:53 2023
 Response via : Initial Calibration
 Integrator: ChemStation

Volume Inj. : 1 ul
 Signal Phase : Rxi-1ms
 Signal Info : 20M x 0.18mm x 0.18um

Compound	R.T.	Response	Conc Units

System Monitoring Compounds			
9) S ortho-Terphenyl (SURR)	11.882	1223872	6.835 ug/mlm
Spiked Amount	50.000	Recovery =	13.67%
12) S 1-chlorooctadecane (S...	13.320	956337	7.278 ug/mlm
Spiked Amount	50.000	Recovery =	14.56%

Target Compounds

(f)=RT Delta > 1/2 Window

(m)=manual int.

Data Path : Z:\pestpcbsrv\HPCHEM1\FID_E\Data\FE072823AL\
 Data File : FE043594.D
 Signal(s) : FID1B.ch
 Acq On : 28 Jul 2023 13:03
 Operator : YP\AJ
 Sample : 03791-01DL 5X
 Misc :
 ALS Vial : 17 Sample Multiplier: 1

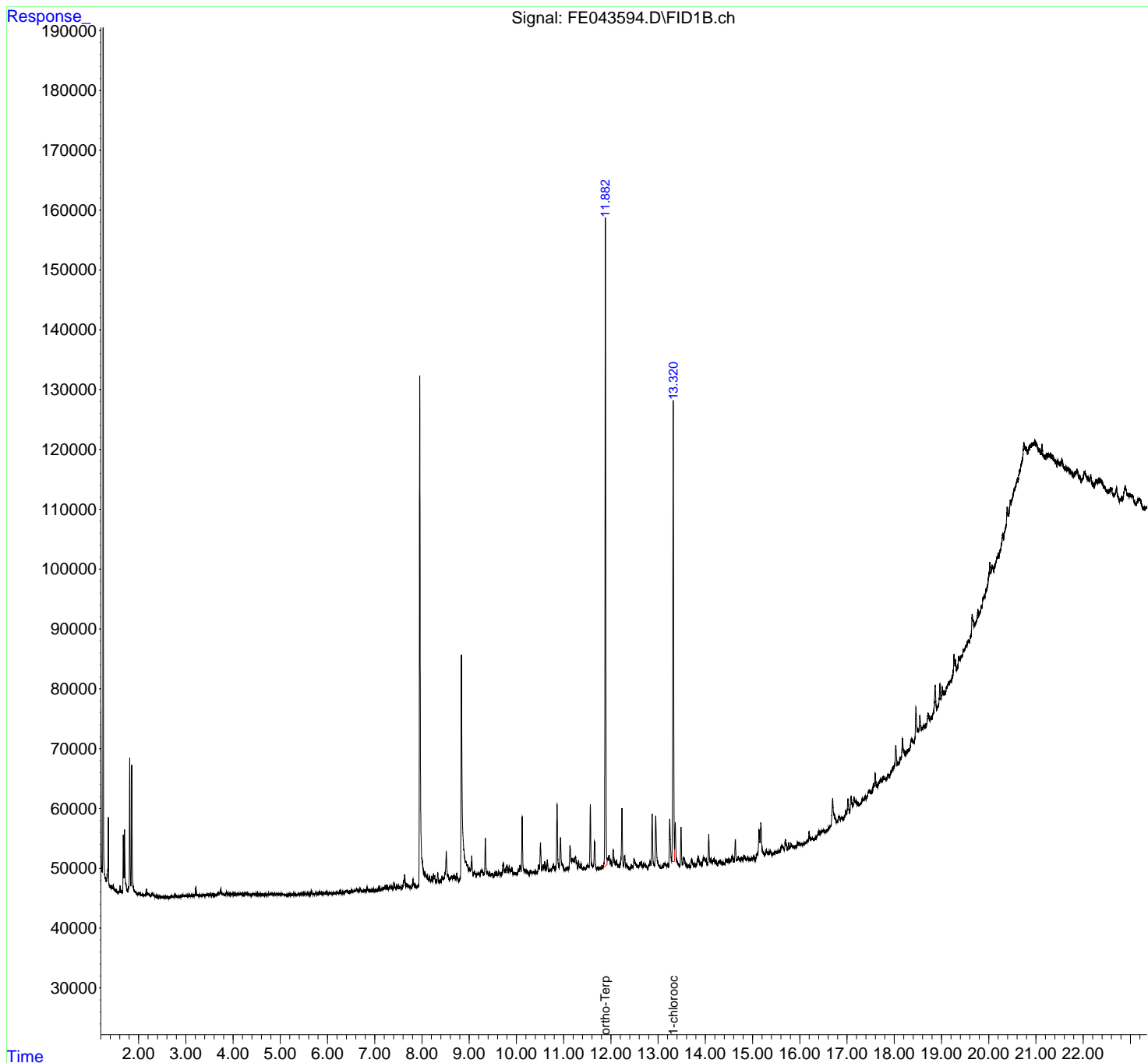
Instrument :
 FID_E
ClientSampleId :
 EO-03-072623DL

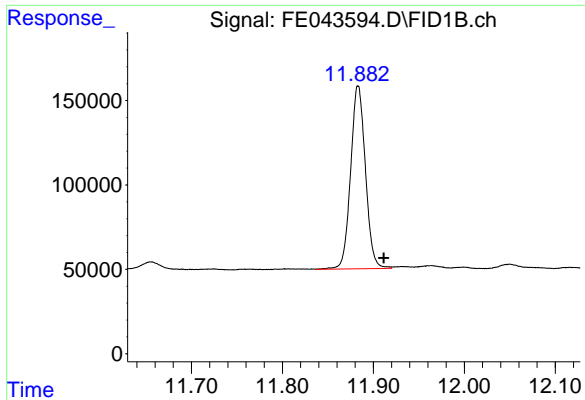
Manual Integrations
APPROVED

Reviewed By :Yogesh Patel 07/31/2023
 Supervised By :Ankita Jodhani 07/31/2023

Integration File: sample.E
 Quant Time: Jul 28 13:29:00 2023
 Quant Method : Z:\pestpcbsrv\HPCHEM1\FID_E\methods\Aliphatic EPH 071323.M
 Quant Title : GC Extractables
 QLast Update : Thu Jul 13 03:02:53 2023
 Response via : Initial Calibration
 Integrator: ChemStation

Volume Inj. : 1 ul
 Signal Phase : Rxi-1ms
 Signal Info : 20M x 0.18mm x 0.18um





#9 ortho-Terphenyl (SURR)

R.T.: 11.882 min
 Delta R.T.: -0.029 min
 Response: 1223872
 Conc: 6.83 ug/ml

Instrument :

FID_E

ClientSampleId :

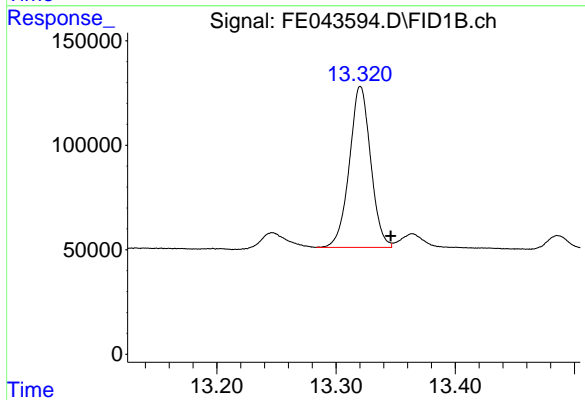
EO-03-072623DL

Manual Integrations

APPROVED

Reviewed By :Yogesh Patel 07/31/2023

Supervised By :Ankita Jodhani 07/31/2023



#12 1-chlorooctadecane (SURR)

R.T.: 13.320 min
 Delta R.T.: -0.026 min
 Response: 956337
 Conc: 7.28 ug/ml m